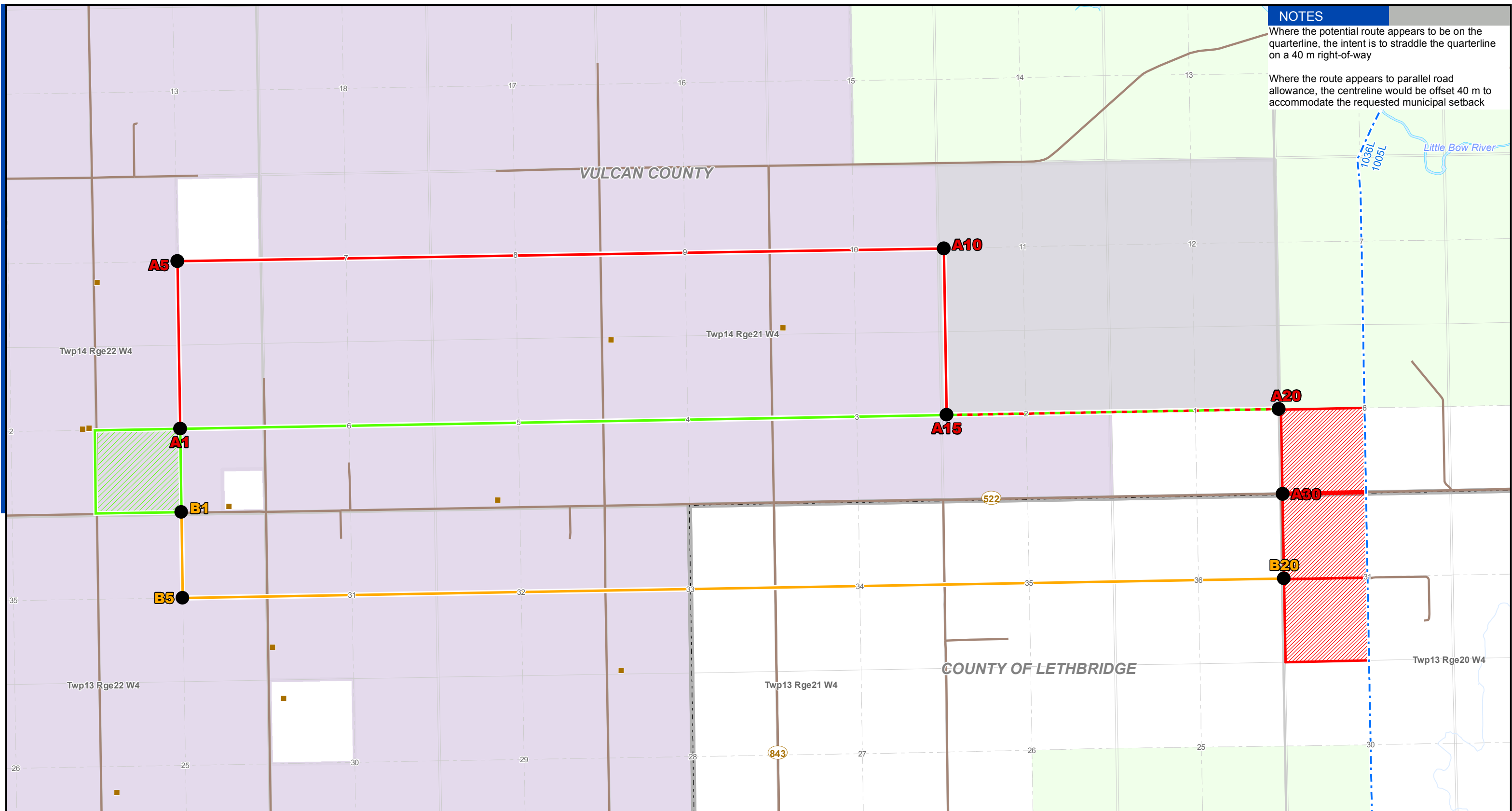


**NOTES**

Where the potential route appears to be on the quarterline, the intent is to straddle the quarterline on a 40 m right-of-way

Where the route appears to parallel road allowance, the centreline would be offset 40 m to accommodate the requested municipal setback

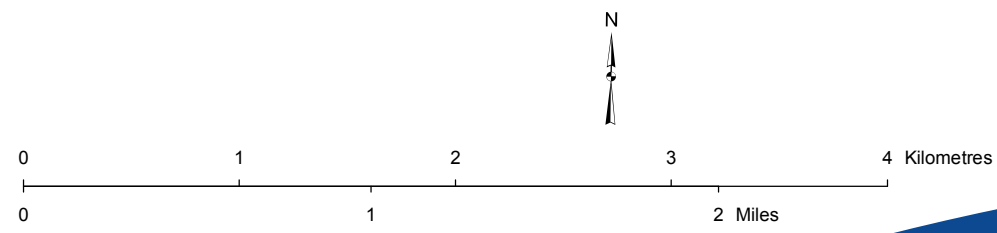


**LEGEND**

- Point Designation
- Potential Route A
- Overlapping Potential Routes (A,B)
- Potential Route B
- Potential Route C
- Existing Transmission Line
- ▨ Potential Area for Proposed Travers 554S Switching Station Location
- ▨ Approved Area for Proposed Blackspring Ridge Substation Location
- Residence
- Road
- County Boundary
- ▨ Environmentally Significant Area
- ▨ Water Body
- ▨ Wind Farm Project Boundary

NO: 35013682-1020 REVISION: 0.00.00  
 DRAWN: WL - TERA DATE: 2011-06-18  
 FILE NO.: AL FOLDER: Blackspring Ridge Wind

*Although there is no reason to believe that there are any errors associated with the data used to generate this product or in the product itself, users of these data are advised that errors in the data may be present.*



DETAIL BASE **DB1**

**ALTALINK**

**PROPOSED**  
 Blackspring Ridge Wind Power Facility Interconnection