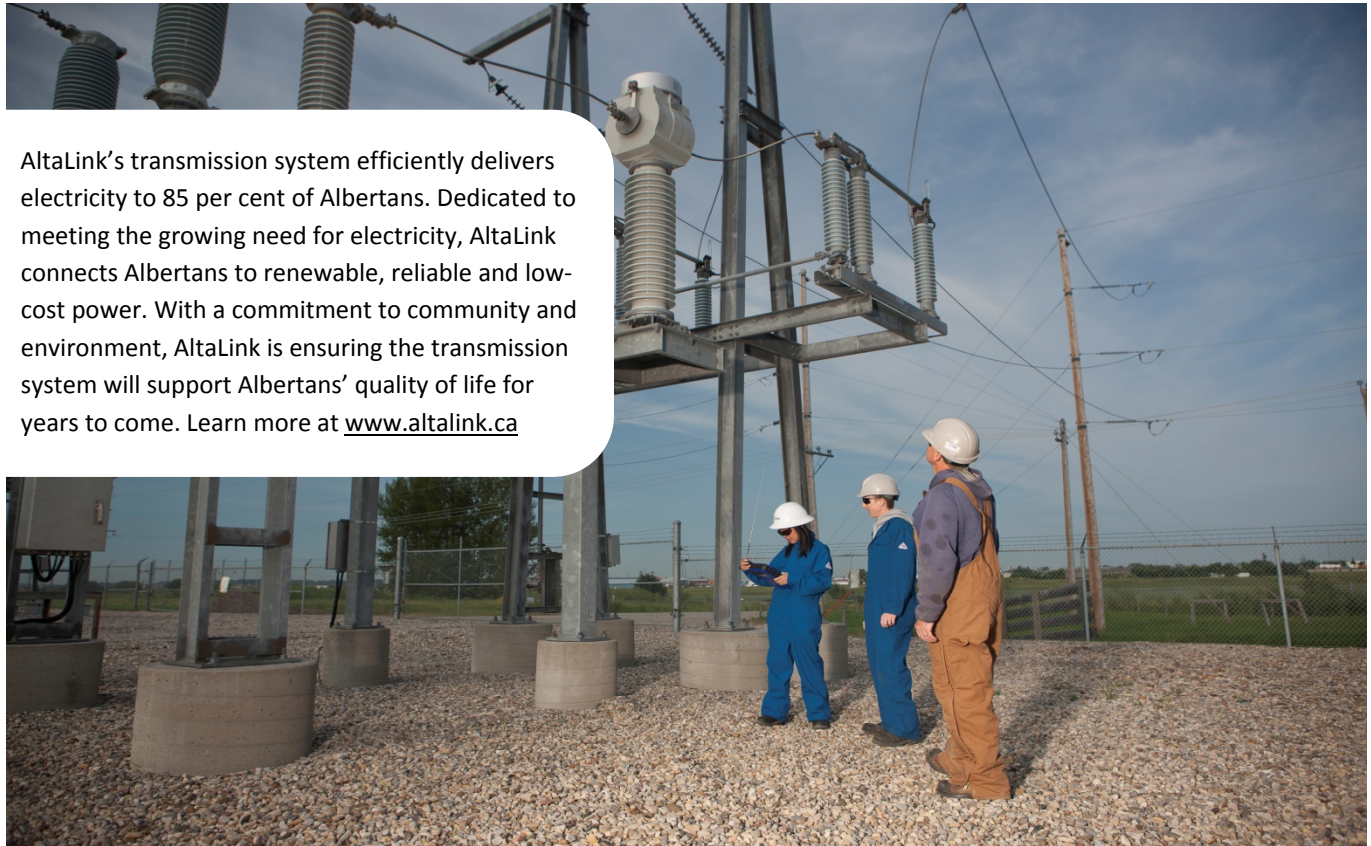


Electric system improvements near you

Bruderheim Substation Upgrade



AltaLink's transmission system efficiently delivers electricity to 85 per cent of Albertans. Dedicated to meeting the growing need for electricity, AltaLink connects Albertans to renewable, reliable and low-cost power. With a commitment to community and environment, AltaLink is ensuring the transmission system will support Albertans' quality of life for years to come. Learn more at www.altalink.ca

You are receiving this newsletter because you are near the Bruderheim **substation** upgrade proposed in the Fort Saskatchewan area and we want your input.

There is an increased demand for electricity in the Fort Saskatchewan area, and the Bruderheim Substation currently does not have the capacity to meet this need. Transmission system reinforcements are needed to ensure that a reliable supply of electricity is available for years to come.

We want to provide you with:

- project details
- map of the proposed development
- project schedule
- information about how you can provide your input

Definition: **Substation**

Substations are the connection point between high-voltage transmission lines and the lower voltage power lines (called distribution lines) that connect directly to homes and businesses.

After a transmission line brings power to a substation, its voltage is reduced so it can be transported safely and efficiently to you.

CONTACT US

1-877-267-1453

Siting.Consultation@altalink.ca

Find us online at

www.altalink.ca/regionalprojects

The proposed project involves adding new equipment to the Bruderheim Substation within the existing fenced area – no expansion to the substation is required. The substation site is located at NW-35-55-20-W4, approximately three kilometres (2 miles) east of the Town of Bruderheim.

The Bruderheim Substation will be upgraded by adding a 25 kV circuit breaker. A circuit breaker is an electrical switch inside a substation that protects electric system equipment. Circuit breakers help ensure the safety and reliability of the electric system.



A typical 25 kV circuit breaker

Providing your input

We will contact landowners, residents and occupants near the proposed project to gather input and address questions or concerns.

After the consultation process is complete we will file an application with the Alberta Utilities Commission (AUC). The AUC ensures the fair and responsible delivery of Alberta’s utility services. AltaLink submits applications for new transmission projects to the AUC and the AUC reviews them in a public process.

We will notify stakeholders when we file the application and again once the AUC has reached a decision about the project. To learn more about the AUC process and how you can become involved, please refer to the brochure included in this package titled *Public Involvement in Needs or Facilities Applications*.

Project schedule

Notify and consult with stakeholders	Summer 2011
File application with Alberta Utilities Commission (AUC)	Fall 2011
Start construction if project is approved	Winter 2012
Construction completed	Summer 2012

Contact us

To learn more about the proposed project please contact:

AltaLink at 1-877-267-1453 (toll-free)

E-mail: siting.consultation@altalink.ca

Website: www.altalink.ca/regionalprojects

To learn more about Alberta's electric system and the need for the project, please contact:

Alberta Electric System Operator (AESO) at 1-888-866-2959

E-mail: stakeholder.relations@aeso.ca

To learn more about the application and review process, please contact:

Alberta Utilities Commission (AUC) at 780-427-4903

(You can call toll-free by dialing 310-0000 before the number.)

E-mail: utilitiesconcerns@auc.ab.ca

Included in this information package:

- Project map
- AltaLink brochure: *A Dialogue on Electric & Magnetic Fields*
- AltaLink brochure: *Good Neighbours*
- AUC brochure: *Public Involvement in Needs or Facilities Applications*
- AESO Need Overview

DID YOU KNOW?

Essential services that are critical to Albertans, such as hospitals and schools, rely on large amounts of power. On average, hospitals use 1,875,000 kilowatt hours (kWh) of electricity a month. That's enough to power more than 3,000 typical homes for a month. Transmission lines transport the power supply hospitals need to perform medical procedures and provide emergency services for Albertans.