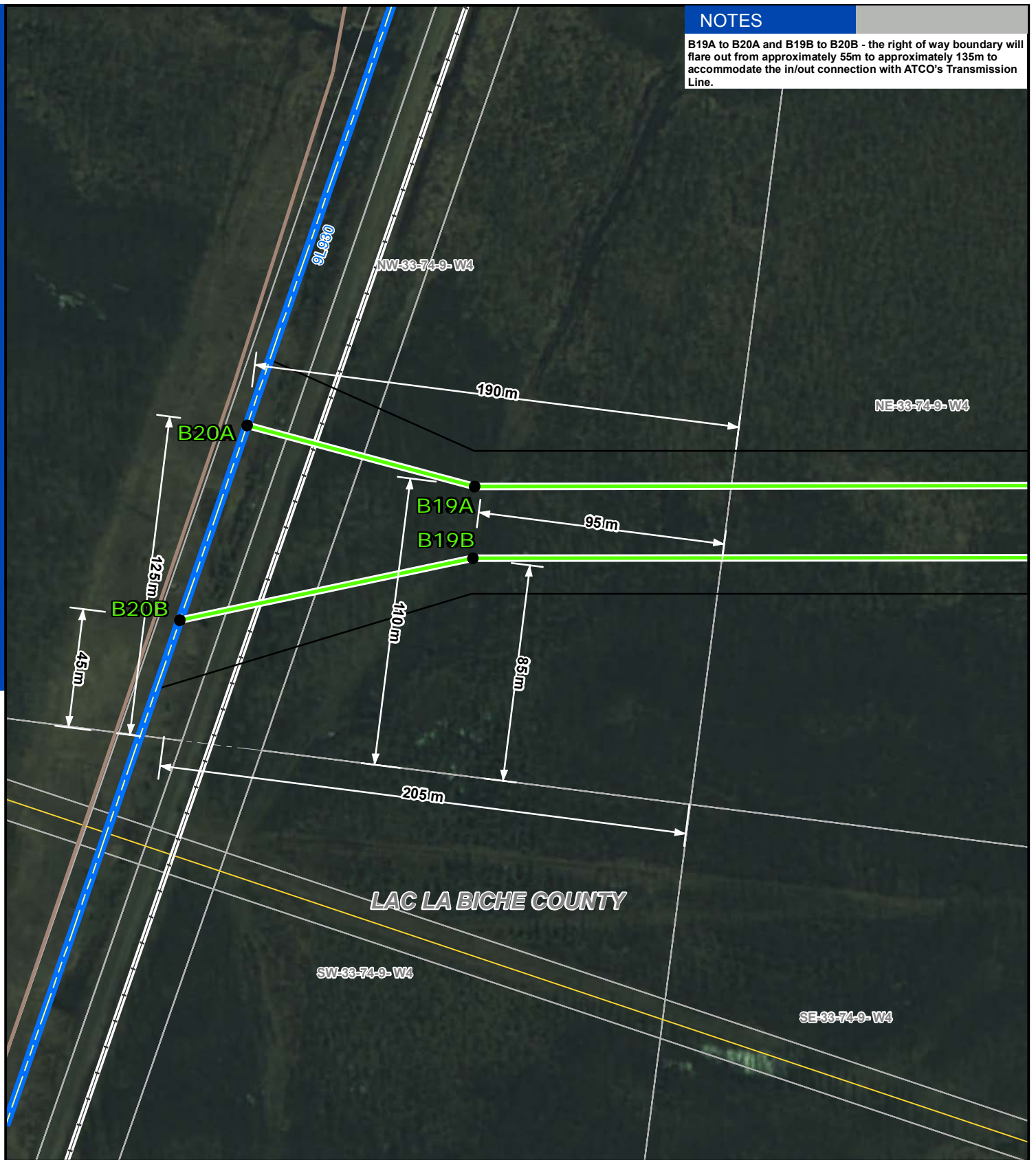


NOTES

B19A to B20A and B19B to B20B - the right of way boundary will flare out from approximately 55m to approximately 135m to accommodate the in/out connection with ATCO's Transmission Line.

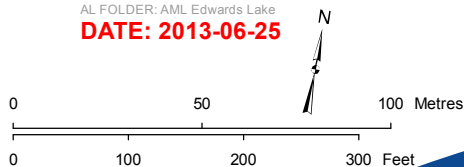


LEGEND

- Point Designation
- Proposed Alternate Transmission Lines
- ATCO's Existing Transmission Line
- Right of Way Boundary
- Pipeline
- Railway
- Road

NO: 35016336 6201
 DRAWN: WL - TERA
 FILE NO.: TERA 8735
 REVISION: 0.01.02
 AL FOLDER: AML Edwards Lake
DATE: 2013-06-25

**Focused On
 Strip Index - S11**



FOCUS PHOTO **FP2-S11**

ALTALINK

PROPOSED

**Edwards Lake 189S Substation
 and Transmission Line**

Photography dated: 2007 Source: Valtus Imagery Services 40cm Colour Ortho Photography
 Although there is no reason to believe that there are any errors associated with the data used to generate this product or in the product itself, users of these data are advised that errors in the data may be present.