

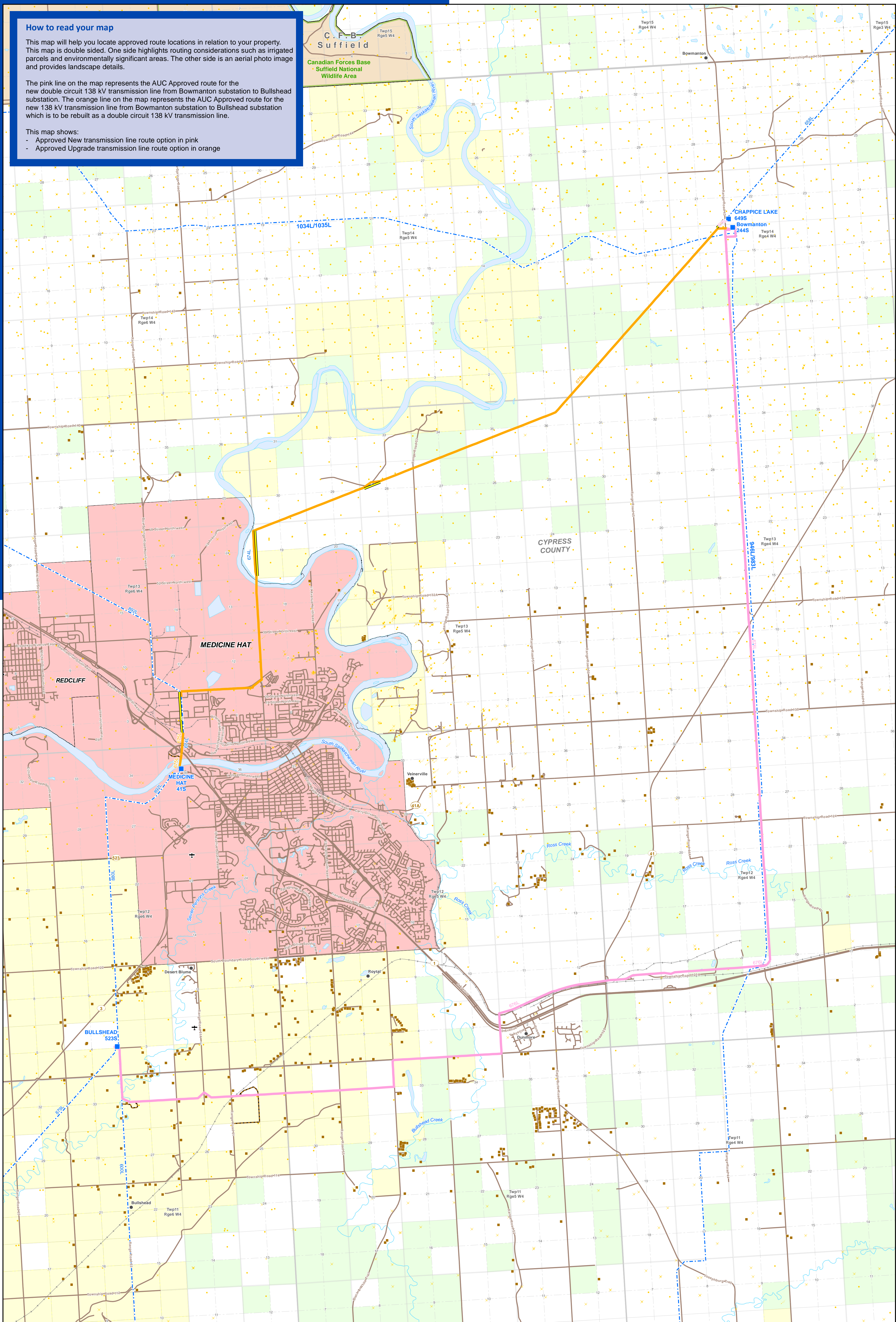
How to read your map

This map will help you locate approved route locations in relation to your property. This map is double sided. One side highlights routing considerations such as irrigated parcels and environmentally significant areas. The other side is an aerial photo image and provides landscape details.

The pink line on the map represents the AUC Approved route for the new double circuit 138 kV transmission line from Bowmanton substation to Bullshead substation. The orange line on the map represents the AUC Approved route for the new 138 kV transmission line from Bowmanton substation to Bullshead substation which is to be rebuilt as a double circuit 138 kV transmission line.

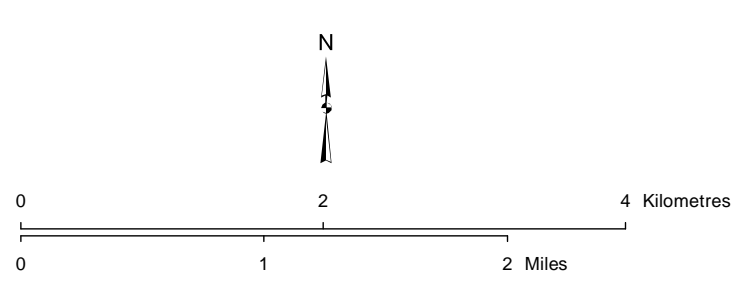
This map shows:

- Approved New transmission line route option in pink
- Approved Upgrade transmission line route option in orange



LEGEND		<small> NO. DRAWING: JSD - STN REVISION: 6.00.00 FILE NO.: 123510319-021 AL FOLDER: MH138 DATE: 2015-03-31 </small>	
	Existing Substation		Air Strip
	Approved New Transmission Line Route Option		Hamlet or Locality
	Approved Upgrade Transmission Line Route Option		Residence
	Existing Transmission Line to be Salvaged		Gas or Oil Well
	Existing Transmission Line		Abandoned or Dry Well
	Proposed Key Access Trail		Injection or Service Well
			Drilling Well
			Highway or Road
			Railway
			River or Stream
			Environmentally Significant Area
			Irrigated Parcel**
			Military Base
			Other Protected Area
			Water Body
			Urban Area

Although there is no reason to believe that there are any errors associated with the data used to generate this product or in the product itself, users of these data are advised that errors in the data may be present.
 **Irrigated parcel data provided by Alberta Agriculture and Rural Development, Irrigation and Farm Water Division and other sources.



DETAIL BASE DB1

ALTALINK

**APPROVED
MEDICINE HAT 138kV
TRANSMISSION PROJECT**

From Medicine Hat 41S Substation to Approved Bowmanton 244S Substation and
 From Bullshead 523S Substation to Approved Bowmanton 244S Substation