

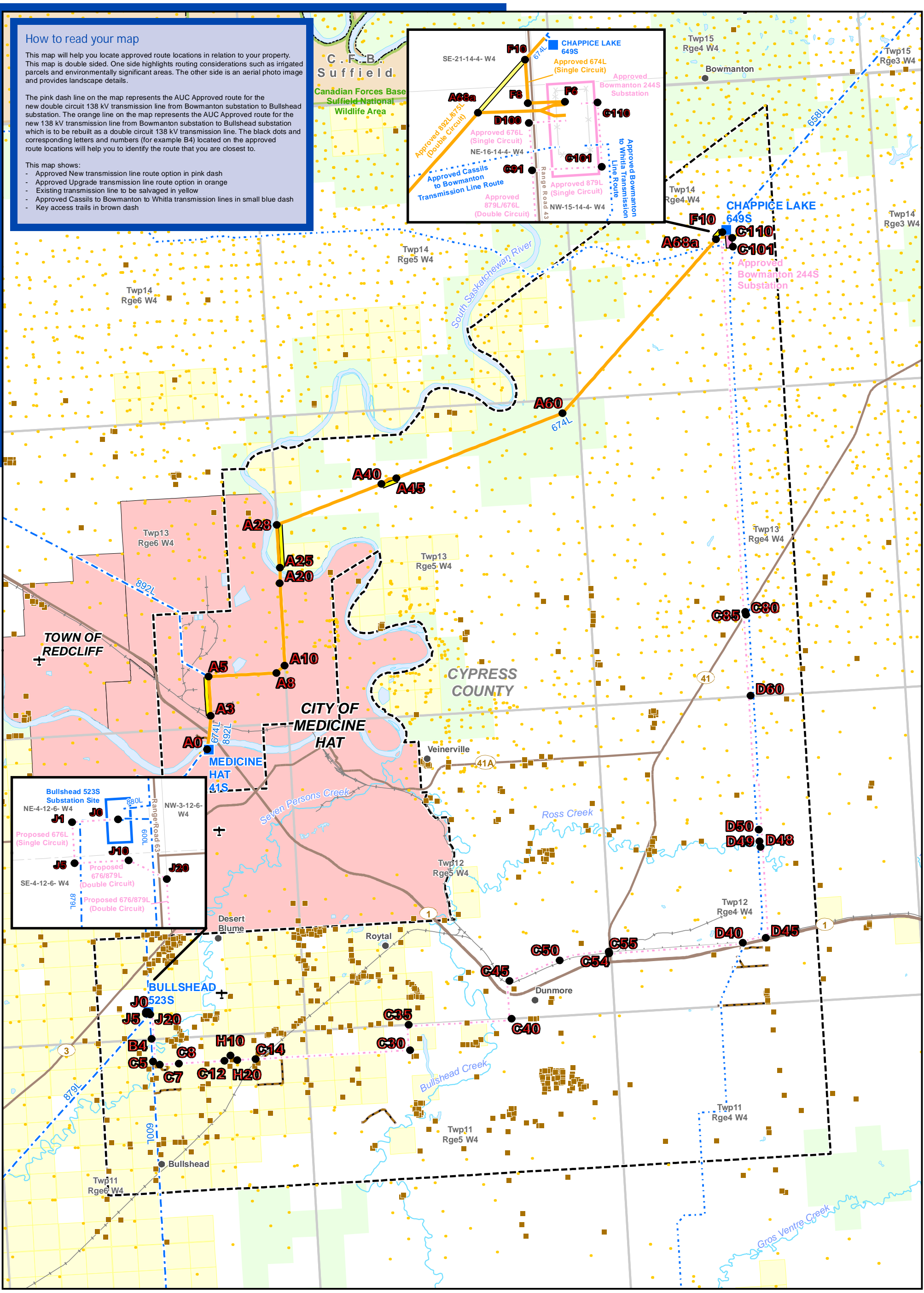
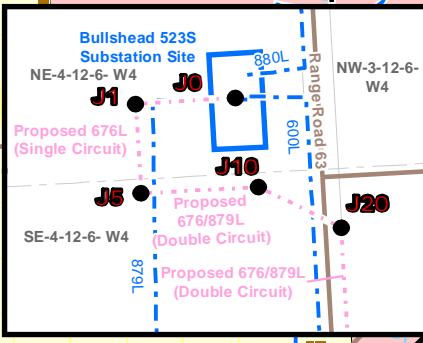
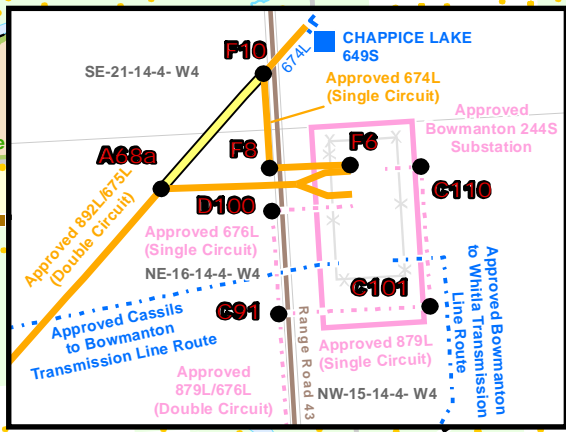
How to read your map

This map will help you locate approved route locations in relation to your property. This map is double sided. One side highlights routing considerations such as irrigated parcels and environmentally significant areas. The other side is an aerial photo image and provides landscape details.

The pink dash line on the map represents the AUC Approved route for the new double circuit 138 kV transmission line from Bowmanton substation to Bullshead substation. The orange line on the map represents the AUC Approved route for the new 138 kV transmission line from Bowmanton substation to Bullshead substation which is to be rebuilt as a double circuit 138 kV transmission line. The black dots and corresponding letters and numbers (for example B4) located on the approved route locations will help you to identify the route that you are closest to.

This map shows:

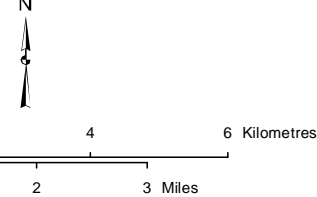
- Approved New transmission line route option in pink dash
- Approved Upgrade transmission line route option in orange
- Existing transmission line to be salvaged in yellow
- Approved Cassils to Bowmanton to Whittita transmission lines in small blue dash
- Key access trails in brown dash



LEGEND

- Point Designation
- Approved Substation
- Existing Substation
- Approved New Transmission Line Route Option
- Approved Upgrade Transmission Line Route Option
- Other Approved Transmission Line Projects
- Existing Transmission Line to be Salvaged
- Proposed Key Access Trail
- Existing Transmission Line
- Study Area
- ✈ Airport
- Hamlet or Locality
- Residence
- Wellsite
- Railway
- River or Stream
- Road
- Environmentally Significant Area
- Irrigated Parcel**
- Military Base
- Other Protected Area
- Urban Area
- Water Body

NO: DRAWN: ZB - ST
FILE NO.: 123510319-232
REVISION: 0.00.00
AL FOLDER: MH138
DATE: 2013-10-30



DETAIL BASE DB1

ALTALINK

APPROVED
MEDICINE HAT 138kV TRANSMISSION PROJECT
From Medicine Hat 41S Substation to Approved Bowmanton 244S Substation and From Bullshead 523S Substation to Approved Bowmanton 244S Substation

Although there is no reason to believe that there are any errors associated with the data used to generate this product or in the product itself, users of these data are advised that errors in the data may be present. National Wildlife Area Provided by Base Engineering, Batus, DRDC, Canadian Forces. **Irrigated parcel data provided by Alberta Agriculture and Rural Development, Irrigation and Farm Water Division and other sources.