

**How to read your map**

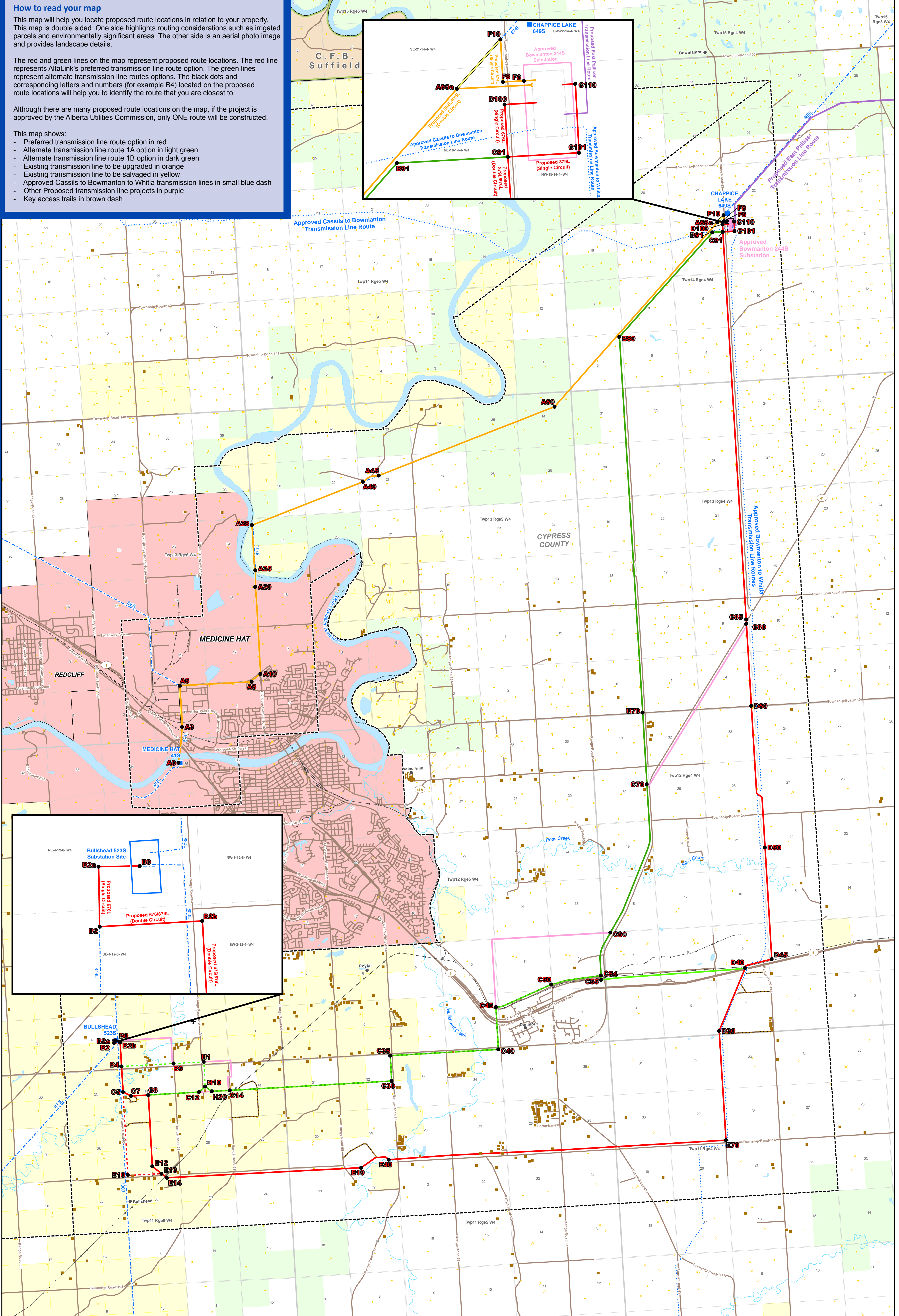
This map will help you locate proposed route locations in relation to your property. This map is double sided. One side highlights routing considerations such as irrigated parcels and environmentally significant areas. The other side is an aerial photo image and provides landscape details.

The red and green lines on the map represent proposed route locations. The red line represents AltaLink's preferred transmission line route option. The green lines represent alternate transmission line routes options. The black dots and corresponding letters and numbers (for example B4) located on the proposed route locations will help you to identify the route that you are closest to.

Although there are many proposed route locations on the map, if the project is approved by the Alberta Utilities Commission, only ONE route will be constructed.

This map shows:

- Preferred transmission line route option in red
- Alternate transmission line route 1A option in light green
- Alternate transmission line route 1B option in dark green
- Existing transmission line to be upgraded in orange
- Existing transmission line to be salvaged in yellow
- Approved Cassils to Bowmanton to Whittia transmission lines in small blue dash
- Other Proposed transmission line projects in purple
- Key access trails in brown dash



**LEGEND**

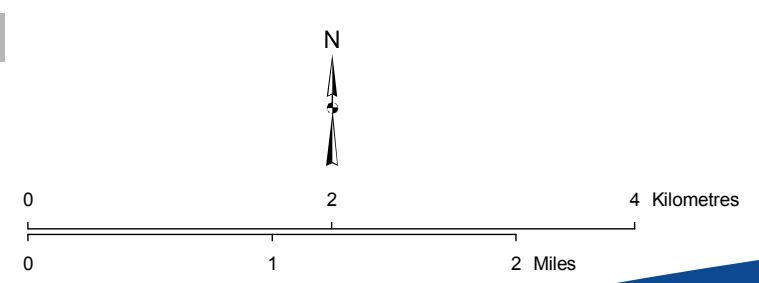
- Point Designation
- Approved Substation
- Preferred Transmission Line Route Option
- Alternate 1A Transmission Line Route Option
- Alternate 1B Transmission Line Route Option
- Alternate 1A/Alternate 1B
- Preferred Variant Transmission Line Route Option
- Alternate Variant Transmission Line Route Option
- Proposed Upgrade to Existing Transmission Line
- Retired Transmission Line
- Other Approved Transmission Line Projects
- Other Proposed Transmission Line Projects
- Existing Transmission Line
- to be Salvaged
- Proposed Key Access Trail
- Existing Transmission Line
- Study Area
- ✈ Airport
- Hamlet or Locality
- Residence
- Gas or Oil Well
- Abandoned or Dry Well
- Injection or Service Well
- Drilling Well
- Highway or Road
- Railway
- River or Stream
- Environmentally Significant Area
- Irrigated Parcel\*\*
- Military Base
- Other Protected Area
- Urban Area
- Water Body

NO. DRAWN: MDV5 - ST REVISION: 2  
 DATE: 2011-11-04  
 FILE NO: 123510319-021 AL FOLDER: MH138

Although there is no reason to believe that there are any errors associated with the data used to generate this product or in the product itself, users of these data are advised that errors in the data may be present.

National Wildlife Area Provided by Base Engineering, Baltes, DRCC, Canadian Forces.

\*\*Irrigated parcel data provided by Alberta Agriculture and Rural Development, Irrigation and Farm Water Division and other sources.



**DETAIL BASE DB1**

**ALIALINK**

**PROPOSED  
 MEDICINE HAT 138kV  
 TRANSMISSION PROJECT**

From Medicine Hat 41S Substation to Approved Bowmanton 244S Substation and  
 From Bullshead 523S Substation to Approved Bowmanton 244S Substation