

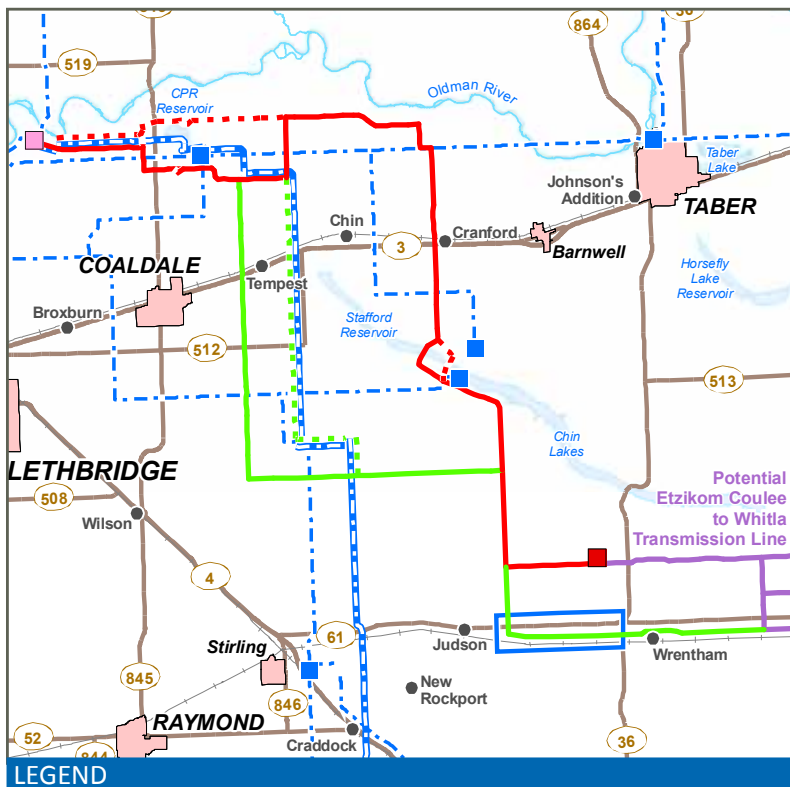
Electric system developments near you

Picture Butte to Etzikom Coulee Transmission Project

PREFERRED AND ALTERNATE ROUTE SELECTION

DID YOU KNOW?

The average four-person family in Alberta today has 20 'instant-on' electronics such as laptops, DVD players, music device chargers and cell phone chargers. This is in addition to the other appliances necessary to run a home – fridges, stoves, microwaves, washers and dryers – all of which require a reliable supply of electricity.



LEGEND	
■ Preferred Journault Substation	Potential Transmission Line
■ Approved Picture Butte Substation	— Preferred
■ Existing Substation	- - - Preferred Variant
	— Alternate
	- - - Alternate Variant
	— Other Transmission Line
	- . - . - . Approved MATL Transmission Line
	--- Existing Transmission Line
	□ Potential Journault Substation Target Area
	● Hamlet or Locality
	— Railway
	— Road
	■ Urban Area
	■ Water Body

You are receiving this newsletter because you are near the proposed Picture Butte to Etzikom Coulee Transmission Project and we want your input.

More information about the proposed project is included in this information package. We want to provide you with:

- preferred and alternate route selection information
- project details
- maps of the proposed development
- project schedule
- information about how you can provide your input

CONTACT US

1-877-269-5903

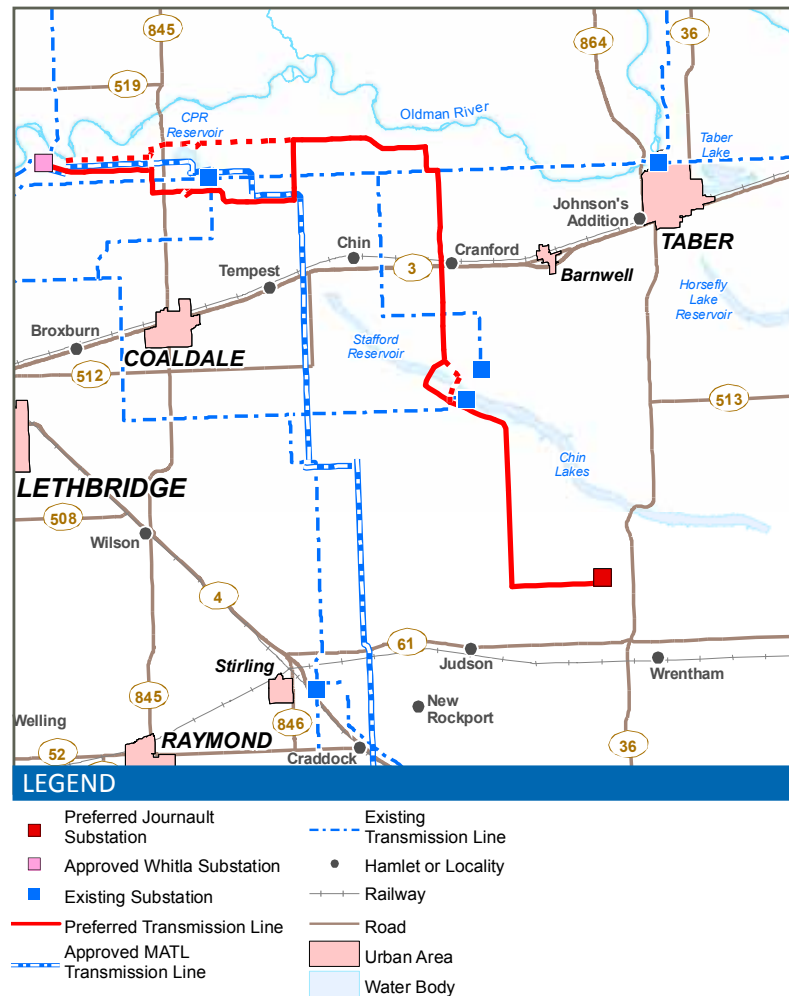
satinfo@altalink.ca

www.altalink.ca/satr

We are currently determining potential structure locations for the preferred and alternate routes. Once these locations have been identified, we will mail area specific maps to all landowners who may have structures on their property. These maps will also be available at the upcoming open houses in December.

Preferred and alternate route selection

Preferred Route



PREFERRED ROUTE (EAST ROUTE)

The east route was selected as the preferred route because it poses a lower overall level of potential impacts when compared to the other proposed routes.

To avoid a sensitive pelican feeding site and high-risk avian conflict zone at the Chin Coulee Dam crossing identified during consultation, we have moved the route approximately one kilometer to the west. This change reduces not only potential impacts to this site, but also increases the distance from the residences located near the Chin Coulee Dam, and reduces other potential environmental impacts. A site specific route option (dashed red line) would cross the reservoir in the same location as our originally proposed routing at the base of the dam.

To avoid environmental issues associated with the CPR Reservoir (located east of Highway 845 at the northern portion of the preferred route), the preferred route will deviate to the south. A site specific route option (dashed red line) that would locate the line north of the CPR Reservoir remains in our routing options. The preferred route would potentially impact more residences in this area, but would avoid construction of lines north and south of the CPR Reservoir. When combined with the MATL transmission line in close proximity, this site specific option would create a 'boxing in' of the reservoir, which has been assessed as posing environmental impacts to birds in the area.

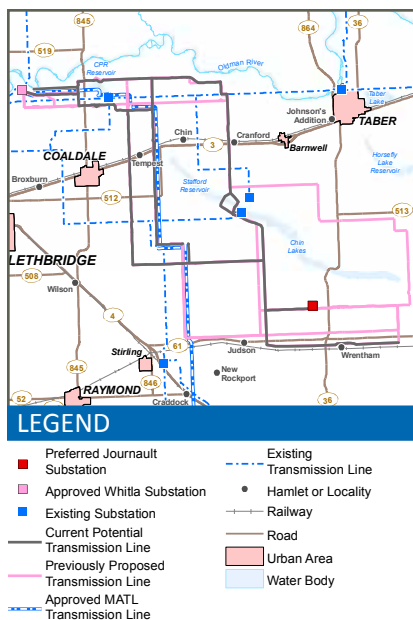
ALTERNATE ROUTE (WEST ROUTE)

The alternate route for this project is the west route. While potentially impacting more agricultural lands and residences than the preferred route, the alternate route would avoid crossing the Stafford Reservoir. As well, the agricultural impacts on the alternate route are viewed as largely mitigable or compensable, particularly in relation to the irrigation systems present. However, the costs associated with mitigating the large amount of irrigation systems would be higher than on the preferred route. The alternate route represents the next best option from an overall impact perspective and is a viable route.

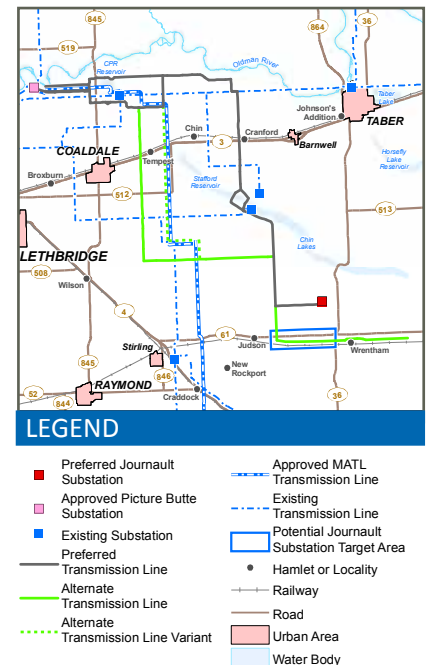
ALTERNATE VARIANT ROUTE (MATL PARALLEL)

Highlighted in dashed green is the alternate variant route. Compared to both the preferred and alternate routes the variant has higher overall impacts, but still represents a viable route given that it will parallel an existing transmission line. However, paralleling the MATL transmission line requires our route to be located approximately 40 metres into the adjacent lands, resulting in a higher overall level of agricultural impacts given the amount of irrigation systems present. There is also a higher number of residences along this route compared to the alternate route, resulting in a higher level of potential residential impacts.

Dropped Segments



Alternate Route



be located approximately 40 metres into the adjacent lands, resulting in a higher overall level of agricultural impacts given the amount of irrigation systems present. There is also a higher number of residences along this route compared to the alternate route, resulting in a higher level of potential residential impacts.

DROPPED SEGMENTS

Route segments that have been removed due to their higher relative impacts as compared to both the preferred and alternate routing are highlighted in pink.

DEFINITION

Substation

Substations are the connection point between high-voltage transmission lines.

Project details

The proposed transmission developments in your area include:

- upgrades to the Picture Butte [Substation](#)
- a new 240 kV (240,000 volts) double circuit transmission line approximately 66 to 80 kilometres in length from the Picture Butte Substation to the proposed Journault Substation

A double circuit 240 kV steel lattice transmission structure is shown below.



A typical structure will have a:

- height of 44 to 60 metres (147 to 197 feet)
- width of 22 to 24 metres (72 to 79 feet) at the widest arm
- base of 10 by 10 metres (32 by 32 feet), up to 14 by 14 metres (46 by 46 feet)
- distance between structures averaging 365 metres (1,198 feet)
- a right-of-way width of 60 metres (197 feet)

COST

The estimated cost for this project is approximately \$160 to 250 million, which would be approximately 16 to 25 cents per month on the typical residential utility bill.

JOURNAULT SUBSTATION

We have determined a preferred location for the proposed Journault Substation to be on the NE-15-7-17-W4. An alternate substation target area is still being explored for other possible substation locations. Both the preferred location and alternate target area for the Journault Substation are shown on the attached map.

Preliminary engineering work indicates that the fenced area for this substation will be approximately 115 by 110 metres (377 by 360 feet).

PICTURE BUTTE SUBSTATION

The footprint of the Picture Butte Substation needs to be expanded to allow the termination of the new 240 kV line 991L, which is coming from Journault Substation. To accommodate for new equipment the Picture Butte Substation will be expanded approximately 20 metres (65 feet) to both the southwest and northwest for a total fenced area of approximately 95 metres by 115 metres (311 feet by 377 feet).

Route identification

The table below outlines general criteria we take into account when identifying and refining potential routes.

Important criteria		
	Agricultural	<ul style="list-style-type: none"> • Loss of crops • Reduced efficiency of field operations
	Residential	<ul style="list-style-type: none"> • Proximity to residences • Loss of developable lands and constraints on future development
	Environmental	<ul style="list-style-type: none"> • Alteration of natural areas and interference with environmentally sensitive areas
	Cost	<ul style="list-style-type: none"> • Construction cost and land acquisition costs
	Electrical	<ul style="list-style-type: none"> • Reliability and reparability of the line
	Visual	<ul style="list-style-type: none"> • Visual impact of structures and lines as seen from residences and recreational areas
	Special considerations	<ul style="list-style-type: none"> • Electrical interference with radio transmitting stations and other telecommunication equipment etc.

OUR TRANSMISSION LINES TRANSPORT THE POWER YOU USE EVERY DAY.

AltaLink's transmission system efficiently delivers electricity to **85 per cent** of Albertans. Dedicated to meeting the growing need for electricity, AltaLink connects Albertans to renewable, reliable and low-cost power. With a commitment to community and environment, AltaLink is ensuring the transmission system will support Albertans' quality of life for years to come. Learn more at www.altalink.ca



Providing your input

Stakeholder input is critical to identifying the best solution for this transmission project. You can provide your input by:

ATTENDING OUR OPEN HOUSES

Please join us at our open houses below. We will be available to share information, gather your input and address any questions or concerns you might have.

Coaldale, AB	Dec. 6 4 to 8 p.m.	Coaldale Community Centre 1217 20 Ave
Stirling, AB	Dec. 7 4 to 8 p.m.	Stirling Lions Club Community Centre 417 2 Street
Foremost, AB	Dec. 8 4 to 8 p.m.	Foremost Community Hall 802 1 Ave W

PARTICIPATING IN A ONE-ON-ONE CONSULTATION

We will contact occupants, residents and landowners who are on or directly adjacent to the proposed transmission line route options to gather their input.

Through these discussions we will gather detailed information that will help us determine the best solution for this project.

CONTACTING US DIRECTLY

You can also contact us by phone, e-mail, mail or through our website. Our contact information is on the back page of this newsletter.

Next steps

After consulting with stakeholders, we will use the input gathered to finalize the preferred and alternate routes as well as potential substation locations. After the consultation process is complete we will file an application with the [Alberta Utilities Commission \(AUC\)](#). The AUC will review the application through a process in which stakeholders can participate.

We will notify stakeholders when we file the application and again once the AUC has reached a decision about the project. To learn more about the AUC process and how you can become involved, please refer to the brochure included in this package titled *Public Involvement in Needs or Facilities Applications*.

DEFINITION

Alberta Utilities Commission

The Alberta Utilities Commission (AUC) ensures the fair and responsible delivery of Alberta's utility services. AltaLink submits applications for new transmission projects to the AUC and the AUC reviews them in a public process.

DID YOU KNOW?

Essential services that are critical to Albertans, such as hospitals and schools, rely on large amounts of power. On average, hospitals use 1,875,000 kilowatt hours (kWh) of electricity a month. That's enough to power more than 3,000 typical homes for a month.

Project schedule

AltaLink will communicate and consult with stakeholders throughout the project steps listed below.

Summer/ Fall 2011	Notify and consult with stakeholders
Winter 2012	File application with AUC
Fall 2013	Start construction if project is approved

Projects in the area

AltaLink is working on several projects in the area to make sure your lights come on at the flick of the switch.

Project name	Description	Status
Etzikom Coulee to Whitla Transmission Project	A new substation - to be called Journault Substation - and 87 to 90 km of new 240 kV transmission line	Second round of consultation underway
Goose Lake to Etzikom Coulee Transmission Project	A new 240 kV transmission line from the existing Goose Lake Substation to the proposed Journault Substation	Preliminary siting work underway

SOUTHERN ALBERTA TRANSMISSION REINFORCEMENT

The Southern Alberta Transmission Reinforcement (SATR) includes many proposed projects in southern Alberta that will provide Albertans with access to new wind generated power.

Existing transmission lines and substations in the southern part of the province do not have the capacity to connect power generated from new wind farm projects. To connect this wind generated power to the electric grid, new transmission projects are being proposed to move the wind power from where it's generated to you.

The [Alberta Electric System Operator \(AESO\)](#) filed the need for SATR with the AUC in December 2008. The AUC held a public hearing to review the need for these projects in 2009 and approved the need later that year. The Picture Butte to Etzikom Coulee Transmission Project is part of SATR.

DEFINITION

Alberta Electric System Operator

The Alberta Electric System Operator (AESO) is the independent, not-for-profit organization responsible for the safe, reliable and economic planning and operation of the Alberta electric system.

INCLUDED IN THIS
INFORMATION
PACKAGE

- Project map
- AUC brochure: *Public Involvement in Needs or Facilities Applications*



More information

To learn more about the proposed project, please contact:

ALTALINK

AltaLink at 1-877-269-5903 (toll-free)

Email: satinfo@altalink.ca

www.altalink.ca/satr

To learn more about Alberta's electric system and the need for the project, please contact:

ALBERTA ELECTRIC SYSTEM OPERATOR (AESO)

1-888-866-2959 (toll-free)

Email: stakeholder.relations@aeso.ca

To learn more about the application and review process, please contact:

ALBERTA UTILITIES COMMISSION (AUC)

780-427-4903

(You can call toll-free by dialing 310-0000 before the number.)

E-mail: utilitiesconcerns@auc.ab.ca



2611 - 3rd Avenue SE
Calgary, Alberta T2A 7W7