

CITY OF
SPRUCE
GROVE

Twp52
Rge27 W4

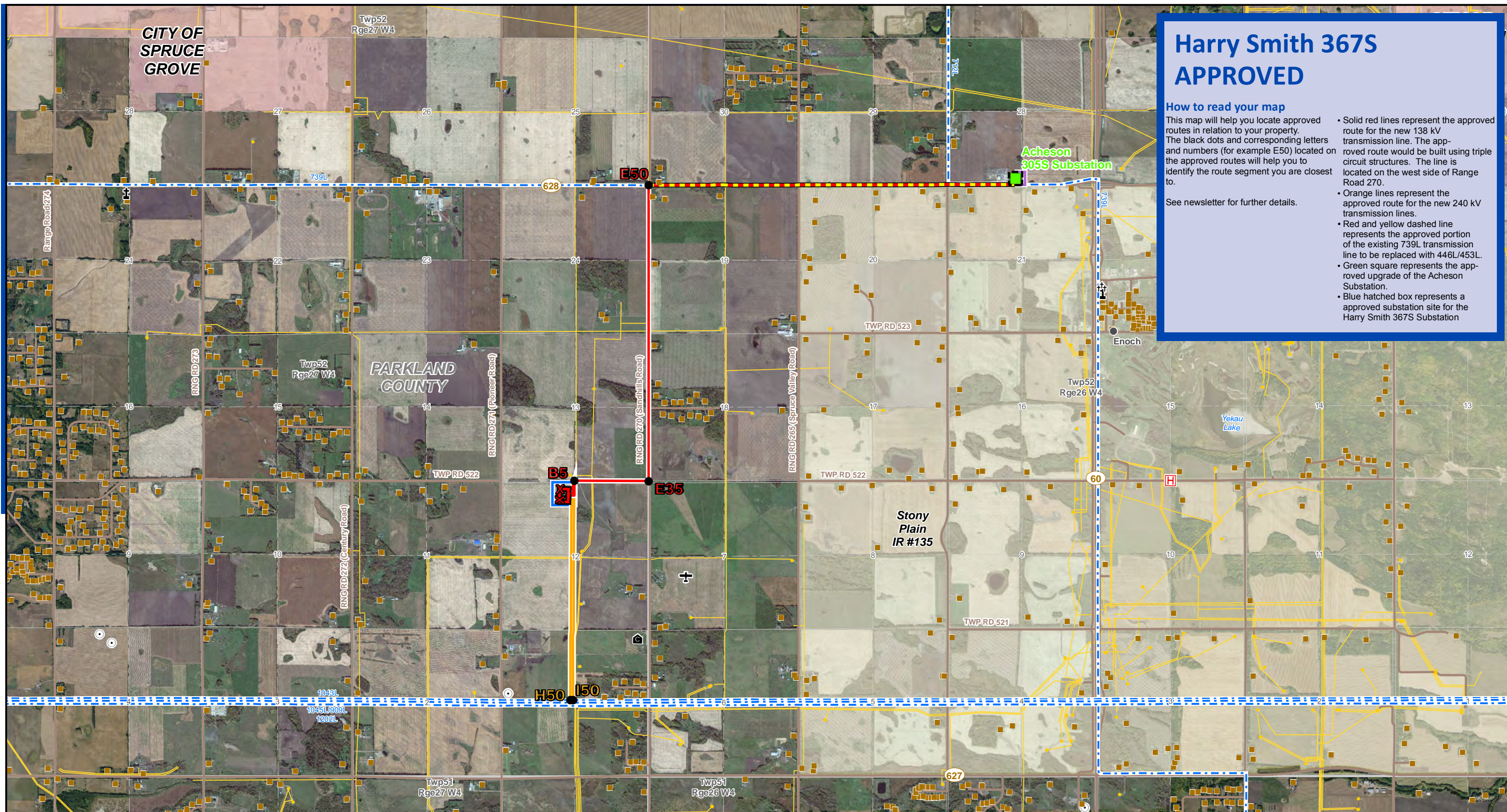
Harry Smith 367S APPROVED

How to read your map

This map will help you locate approved routes in relation to your property. The black dots and corresponding letters and numbers (for example E50) located on the approved routes will help you to identify the route segment you are closest to.

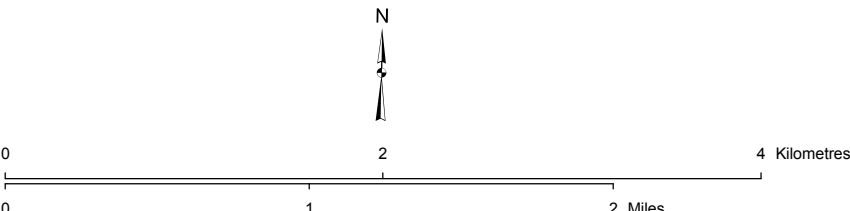
See newsletter for further details.

- Solid red lines represent the approved route for the new 138 kV transmission line. The approved route would be built using triple circuit structures. The line is located on the west side of Range Road 270.
- Orange lines represent the approved route for the new 240 kV transmission lines.
- Red and yellow dashed line represents the approved portion of the existing 739L transmission line to be replaced with 446L/453L.
- Green square represents the approved upgrade of the Acheson Substation.
- Blue hatched box represents a approved substation site for the Harry Smith 367S Substation



LEGEND	
● Point Designation	Approved Substation Site
■ Approved Substation Upgrade	✚ Airstrip
— Approved 138kV Transmission Line	✚ Cemetery
— Approved 240kV Transmission Line	✚ Church
— Approved 739L Salvage/Replacement with 446L/453L	⊙ Communication Tower
--- Existing Transmission Line	⊙ Community Centre
Approved Substation Expansion	● Hamlet or Locality
Approved Substation Fenceline	⊠ Hospital
	■ Residence
	● Wellsite
	— Pipeline
	— Road
	— First Nations Reserve
	Urban Area

NO: 35017014-6201
 DRAWN: MS - EBA
 FILE NO.: C22203149-02
 REVISION: 5.00.00
 AL FOLDER: Harry Smith
DATE: 2016-08-08



Although there is no reason to believe that there are any errors associated with the data used to generate this product or in the product itself, users of these data are advised that errors in the data may be present.
 Photography date: 2009 Source: Valtus Imagery Services 30cm Colour Ortho Photography
 2012 Source: Digital Globe 50cm Colour Ortho Photography

DETAIL PHOTO DP2

APPROVED
 South and West of Edmonton Area
 Transmission Development:
 Harry Smith 367S Substation and Transmission Lines
 Approved