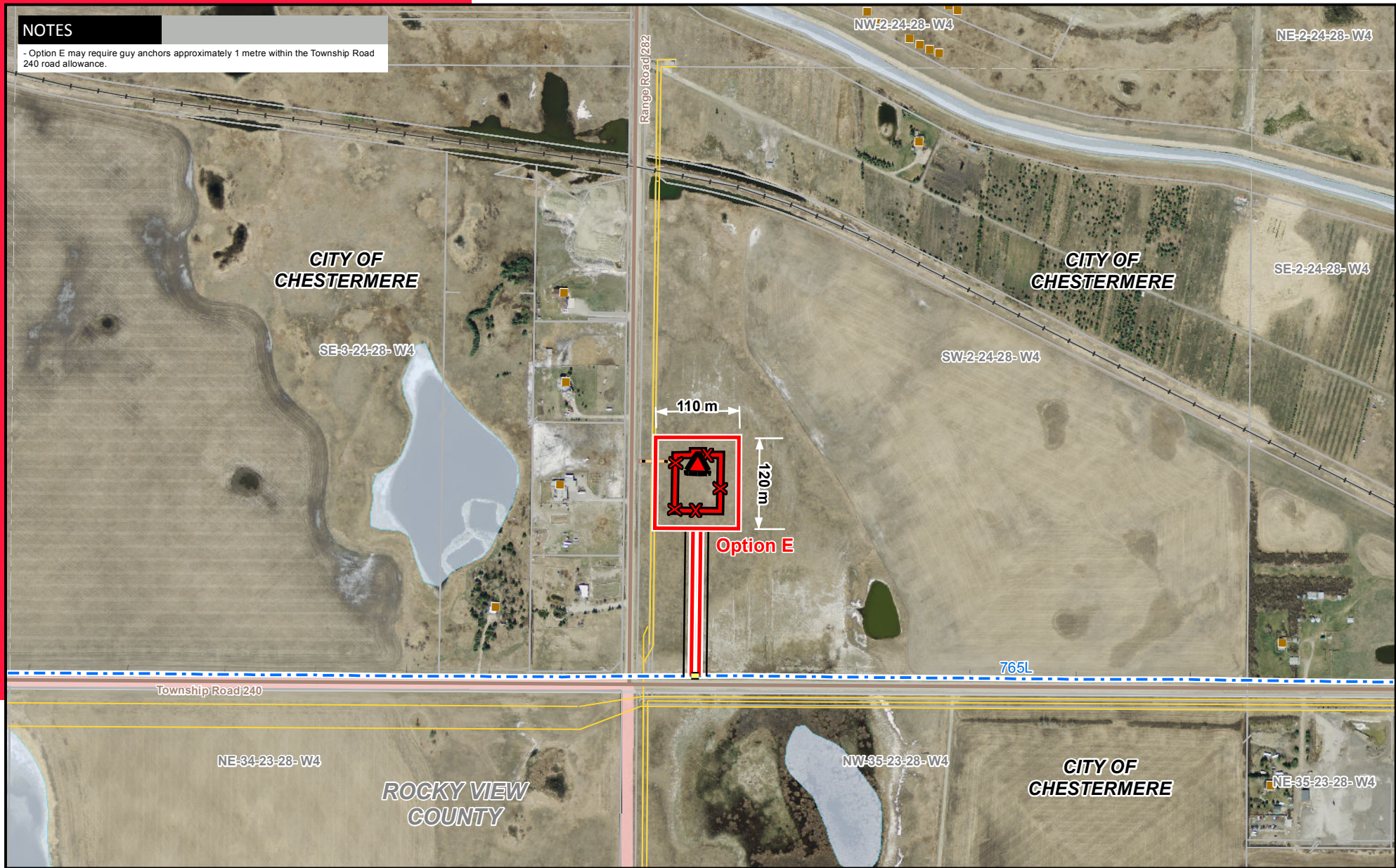


NOTES

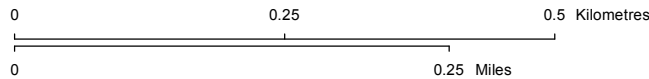
- Option E may require guy anchors approximately 1 metre within the Township Road 240 road allowance.



LEGEND

- Potential Telecom Tower
- Potential Transmission Line
- Potential Salvage of Existing Transmission Line
- Existing Transmission Line
- Potential 30m Right of Way
- Potential Access Trail
- Potential Substation Fenceline
- Potential Substation Property Boundary
- Residence
- Pipeline
- Railway
- Road
- Urban Area
- Water Body

NO: 3502848-6201
 DRAWN: CML - CH2M
 FILE NO.: CH2M 663337
 REVISION: 1.00.00
 AL FOLDER: Fortis Chestermere
DATE: 2016-01-28



*Photography dated: 2012 and 2013. Source: Valtus Imagery
 Although there is no reason to believe that there are any errors associated with the data used to generate this product or in the product itself, users of these data are advised that errors in the data may be present.*

**Focused On
 Detail Photo
 - DP1**

FOCUS PHOTO FP1-DP1



**POTENTIAL
 Chestermere Substation
 Interconnection**