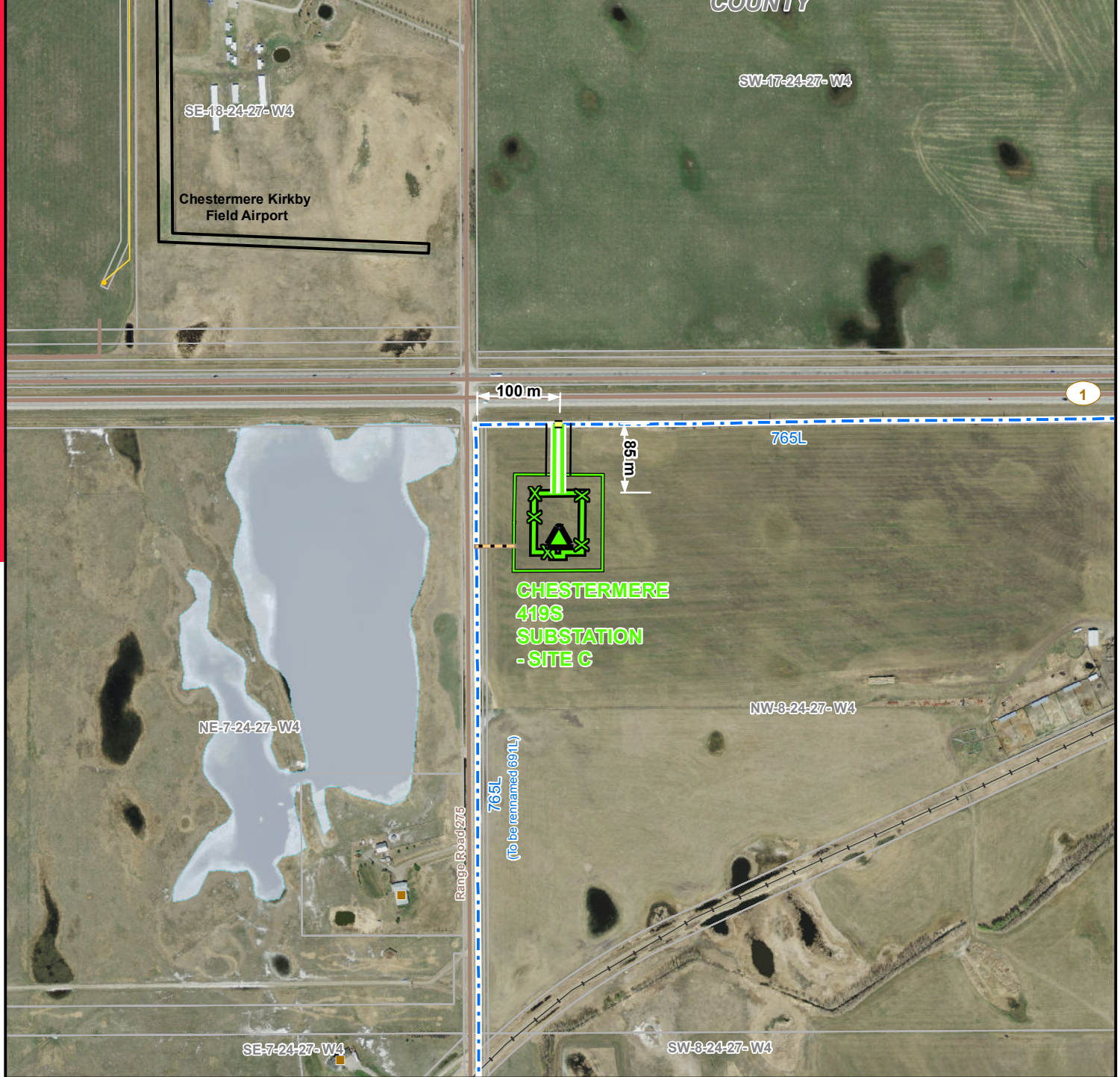


# NOTES

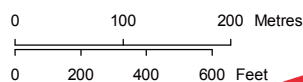
- Guy boxes will be located 1 metre north of the existing 765L transmission line to facilitate the modifications required for the in/out connection to the Chestermere 419S Substation.
- Construction workspace is included within the proposed Alternate substation property boundary.
- Final access trail location will be determined through detailed engineering design.
- The substation fence line is approximately 60 metres by 75 metres.
- The substation property boundary is approximately 110 metres by 120 metres.
- The substation property boundary setback is approximately 105 metres from the centreline of Highway 1 as per Alberta Transportation guidelines.
- Substation property boundary is setback approximately 45 metres from Range Road 275 as per Rocky View County Land Use Bylaw.
- All dimensions are approximate.



## LEGEND

- |  |   |  |            |
|--|---|--|------------|
|  | Proposed Alternate Telecom Tower                |  | Residence  |
|  | Proposed Alternate Transmission Line            |  | Wellsite   |
|  | Proposed Salvage of Existing Transmission Line  |  | Pipeline   |
|  | Existing Transmission Line                      |  | Railway    |
|  | Proposed 30m Right of Way                       |  | Road       |
|  | Proposed Access Trail                           |  | Airport    |
|  | Proposed Alternate Substation Fenceline         |  | Water Body |
|  | Proposed Alternate Substation Property Boundary |  |            |

NO: 3502848-6201  
 DRAWN: KS-CH2M  
 663337  
 REVISION: 2.00.02  
 AL FOLDER: Fortis  
 Chestermere  
 DATE: 2016-07-19



**Focused On  
 Detail Photo  
 - DP1**

**FOCUS PHOTO FP2-DP1**



**PROPOSED  
 Chestermere Substation  
 Interconnection  
 Alternate Substation Site C**

Photography Dated: 2012 and 2013. Source: Valtus Imagery Services 40cm Colour Ortho Photography. Although there is no reason to believe that there are any errors associated with the data used to generate this product or in the product itself, users of these data are advised that errors in the data may be present.