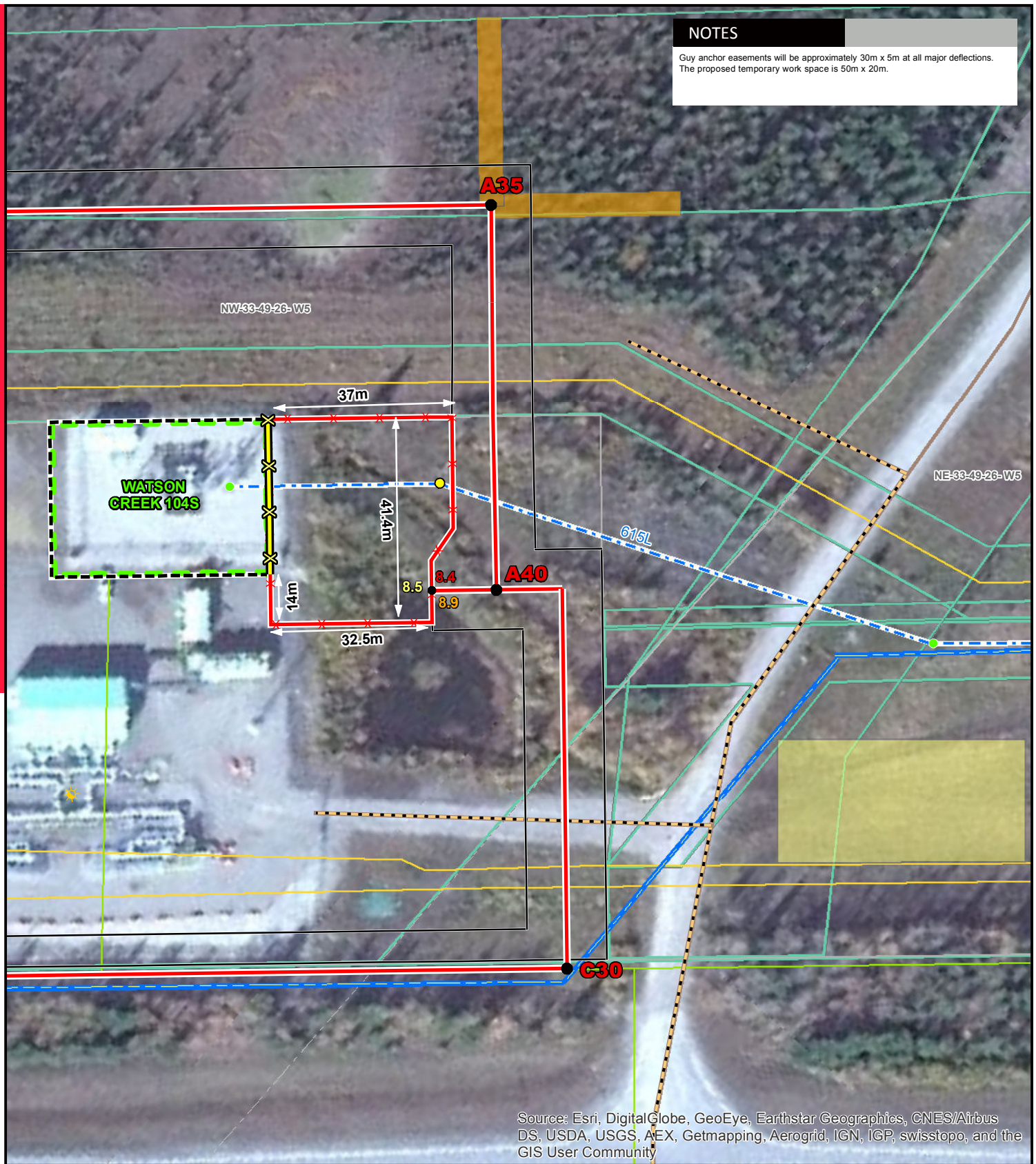


NOTES

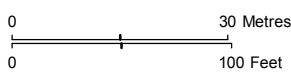
Guy anchor easements will be approximately 30m x 5m at all major deflections.
The proposed temporary work space is 50m x 20m.



Source: Esri, DigitalGlobe, GeoEye, Earthstar Geographics, CNES/Airbus DS, USDA, USGS, AEX, Getmapping, Aerogrid, IGN, IGP, swisstopo, and the GIS User Community

LEGEND	
●	Kilometre Point
●	Point Designation
●	Potential Structure Modification
●	Existing Overhead Tower
—	16m Right of Way Boundary
—	Potential Access Trail
✕	Potential Substation Fenceline Salvage
—	Potential Transmission Line
—	Existing Fortis Distribution Line
—	Existing Transmission Line
—	Potential Substation Fenceline
—	Potential Upgrade to Existing Substation
—	Potential Temporary Workspace
—	Potential Guy Anchor Easement
☀	Pipe Facilities
—	Pipeline
—	Road
—	Telecommunication Line
—	Crown Land

NO: DRAWN: DR- ST
FILE NO.: 123512001-013
REVISION: 0.00.00
AL FOLDER: AltaLink-ATCO
Jasper Interconnection
Transmission Project
DATE: 2016-04-13



FOCUS PHOTO FP01-SM05



POTENTIAL

ATCO JASPER INTERCONNECTION

530L Transmission Line and Watson Creek Substation Upgrade

Although there is no reason to believe that there are any errors associated with the data used to generate this product or in the product itself, users of these data are advised that errors in the data may be present.