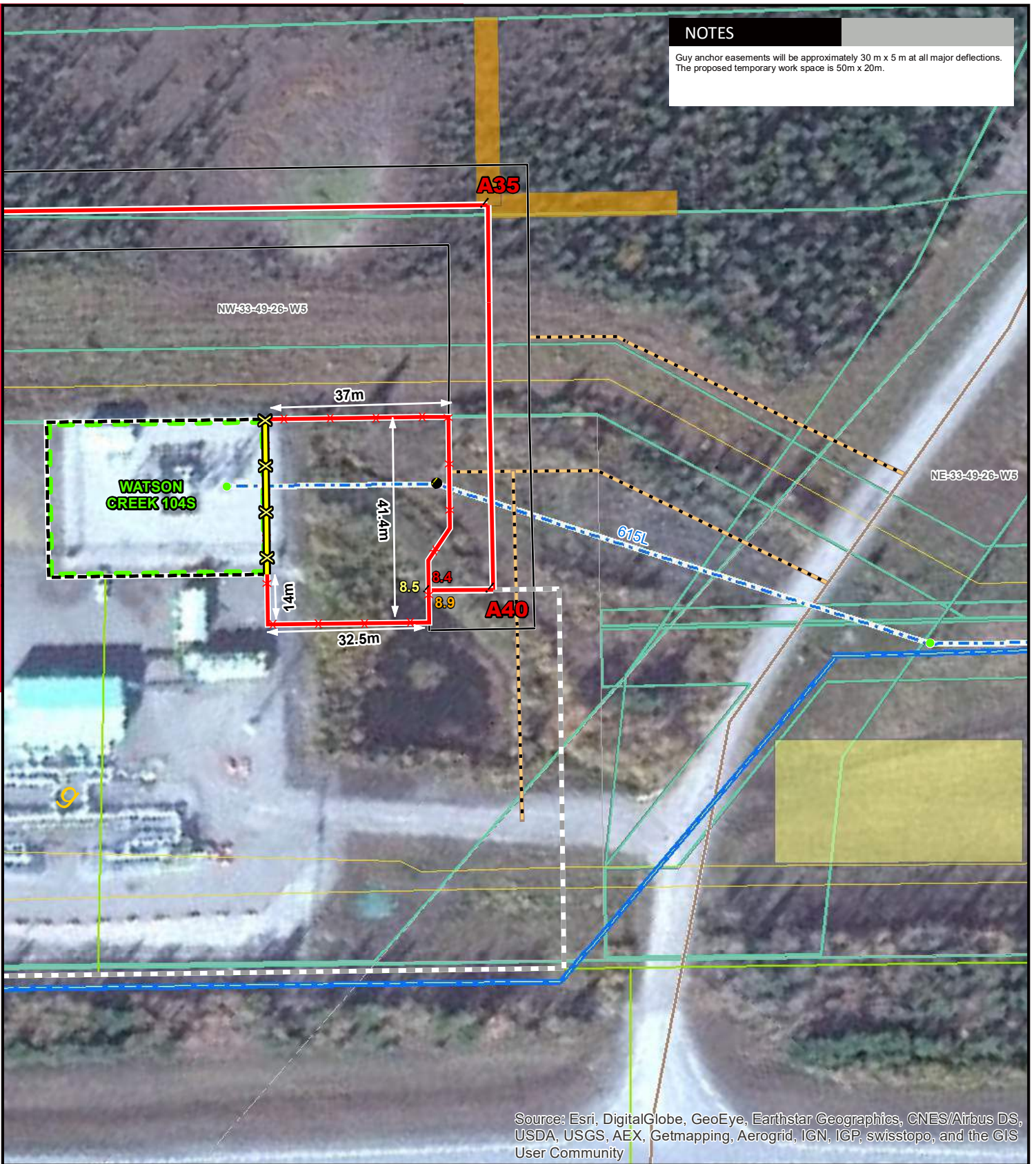


NOTES

Guy anchor easements will be approximately 30 m x 5 m at all major deflections. The proposed temporary work space is 50m x 20m.



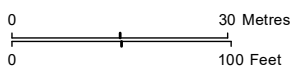
Source: Esri, DigitalGlobe, GeoEye, Earthstar Geographics, CNES/Airbus DS, USDA, USGS, AEX, Getmapping, Aerogrid, IGN, IGP, swisstopo, and the GIS User Community

LEGEND

- ! Kilometre Point
- ! Point Designation
- Proposed Structure Modification
- Existing Overhead Tower
- 16m Right of Way Boundary
- Proposed Access Trail
- ✕ Proposed Substation Fenceline Salvage
- Preferred Transmission Line (Route A)
- Previously Considered Route
- Existing Fortis Distribution Line
- ✕ Proposed Substation Fenceline
- ✕ Proposed Upgrade to Existing Substation
- Proposed Temporary Workspace
- Proposed Guy Anchor Easement
- g Pipe Facility
- Pipeline
- Road
- Telecommunication Line
- Crown Land
- Existing Transmission Line

NO: DRAWN: DR/BL-ST
 FILE NO.: 123512001-013
 REVISION: 1.01.00
 AL FOLDER: AltaLink-ATCO
 Jasper Interconnection
 Transmission Project

DATE: 2016-07-27



FOCUS PHOTO FP01-SM05



PROPOSED

ATCO JASPER INTERCONNECTION

530L Transmission Line and Watson Creek Substation Upgrade

Although there is no reason to believe that there are any errors associated with the data used to generate this product or in the product itself, users of these data are advised that errors in the data may be present.