

Electric system improvements near you

Welsch Wind Farm Connection:
Preferred and alternate route selection

You are receiving this newsletter because you are near the Welsch Wind Farm Connection project and we want your input.

Welsch Wind Power has requested a connection to the **transmission** system for their new wind farm development, Welsch Wind Farm. The Welsch Wind Farm will be connected by building a transmission line between the Welsch Wind Farm and the transmission system.

The transmission line will be constructed, operated and maintained by AltaLink and will connect Welsch Wind Power's approved Welsch **Substation** to the electric system. We began public consultation in September 2016 for this project and have now identified our preferred and alternate route options.

Although AltaLink's project is separate from the Welsch Wind Farm project, it is required to facilitate the connection of the new wind farm development. Please contact Welsch Wind Power, a wholly owned subsidiary of ENERCON, for more information on their new wind development. Their contact information is on the back of this newsletter.

We are providing you with:

- project details
- the project schedule
- information about how you can provide your input
- maps of the proposed project

DEFINITIONS

Transmission

Transmission lines make up Alberta's electric highway, linking the places where power is generated to where power is used. Transmission lines transport large amounts of power over long distances across the province. The transmission system connects diverse sources of power generation including wind, high-efficiency coal, natural gas and more.

DEFINITIONS

Substation

Substations are the connection points between power lines of varying voltages and contain equipment that controls and protects the flow of power. Substations include transformers that step down and step up the voltage so power can be transmitted through transmission lines or distributed to your community through distribution lines.

CONTACT US

1-877-267-1453
stakeholderrelations@altalink.ca

Visit us online at
www.altalink.ca/regionalprojects

Electric and Magnetic Fields (EMF)

AltaLink recognizes that people have concerns about exposure to Electric and Magnetic Fields (EMF) and we take those concerns seriously.

Everyone in our society is exposed to EMF from many sources, including:

- power lines and other electrical facilities
- electrical appliances in your home
- building wiring

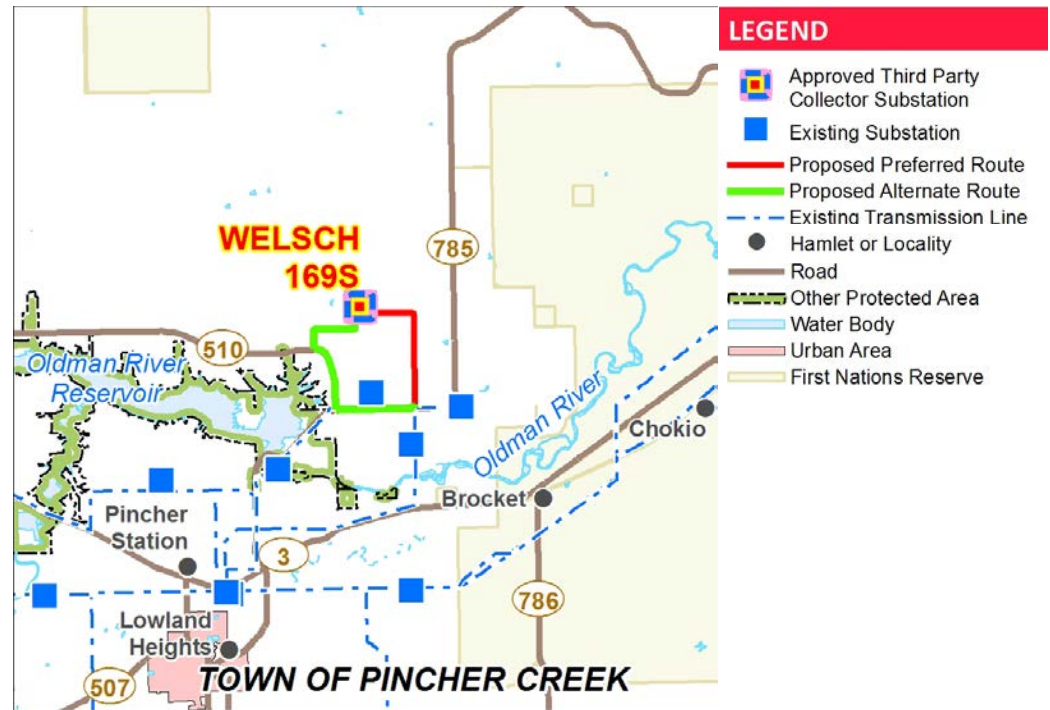
National and international organizations such as the World Health Organization and Health Canada have been conducting and reviewing research about EMF for more than 40 years. Based on this research, these organizations have not recommended the general public take steps to limit their everyday exposure to EMF from high voltage transmission lines.

If you have any questions about EMF please contact us:

Website: www.altalink.ca/emf
Email: emfdialogue@altalink.ca
Toll-free phone number:
1 -866-451-7817

PRIVACY COMMITMENT

AltaLink is committed to protecting your privacy. Your personal information is collected and will be protected under AltaLink's Privacy Policy and Alberta's Personal Information Protection Act. As part of the regulatory process for new transmission projects, AltaLink may provide your personal information to the Alberta Utilities Commission (AUC). For more information about how AltaLink protects your personal information, visit our website at www.altalink.ca/privacy or contact us directly via email privacy@altalink.ca or phone at 1-877-267-6760.



Project details

We are proposing to build approximately six to 10.5 kilometres of single circuit 138 kilovolt (kV) transmission line from Welsch Wind Power's approved Welsch Substation to an existing transmission line in the area. The connection point of the proposed new transmission line and existing transmission line is proposed to be near the junction of Highway 785 and Range Road 291, approximately nine kilometres northeast of Pincher Creek. The connection point is shown on the attached maps as designation point A60.

Route Selection

AltaLink takes several factors into consideration in an effort to find routes with low overall impact, in addition to stakeholder input. Some of the factors we consider include agricultural, residential, environmental and visual impacts, as well as cost. Stakeholder input is an important part of our planning process. Of the potential routes considered, we believe the preferred is the best solution as it has low overall environment, social and economic effects. The alternate route also presents a viable alternative. None of these options have been approved. We intend to submit these routes in our facilities application to the Alberta Utilities Commission (AUC).

Preferred route

We have identified the east route as the preferred route, which is shown in red on the attached maps. The preferred route is approximately six kilometres long and is the shortest route option. A portion of the preferred route between designation points A10 and A25 has been added as a result of stakeholder feedback during consultation and following further analysis has been introduced to reduce potential impacts. The segment of route between A10-A20-A25 is no longer being considered and is shown as a grey line on the attached maps.

The preferred route follows existing road allowance for approximately 60 per cent of its total length. Future wind development is planned where the route is not in road allowance. Impacts to the environment are expected to be low with the application of mitigations. The preferred route also has low residential, visual and agricultural impacts as well as good access for maintenance and operation of the line.

Alternate route

The west route, shown in green on the attached maps, has been selected as the alternate route. The alternate route is approximately 10.5 kilometres long. During consultation we received stakeholder feedback regarding a portion of the alternate route between designation points B15 and B35, east Highway 510, and following further analysis this portion has been introduced to minimize potential impacts. The segment of route on the west side of Highway 510 from designation points B15-B20-B30 is no longer being considered and is shown in grey on the attached maps.

The alternate route has higher potential residential and visual impacts when compared to the preferred route. This alternate route is considered a viable route option as it follows road allowance for 95 per cent of its total length, has low agricultural and environmental impacts and good access for maintenance and operation of the line.

Transmission structures



Single pole structure similar to the proposed



Two pole structure similar to the proposed

Our September 2016 newsletter outlined that single pole, wood structures would be used for this project as pictured above. Further engineering has determined that all structures will be steel and two pole structures may be required as well. Final structure details will be determined following detailed engineering.

The proposed single circuit 138 kV transmission structures will:

- be single pole or two pole
- be steel
- be approximately 13 to 40 metres tall
- typically have distance between structures of approximately 90 to 130 metres

Anticipated project schedule

Notify and consult with stakeholders	Fall 2016 - Early 2017
File application with Alberta Utilities Commission (AUC)	Summer 2017
Start construction if project is approved	Fall 2018
Complete construction	Late 2018

Although we attempt to follow the anticipated project schedule, it is subject to change. We will continue to provide you with updated schedule information if required as the project progresses.

Right-of-way, construction access and workspace

Where the transmission line is located entirely on private property, AltaLink will require a 20 metre right-of-way for a single pole structure. Two pole structures will require a 30 metre right-of-way. Rights-of-way will be acquired from landowners in the form of a right-of-way agreement.

Where the transmission line is proposed in road allowance, AltaLink may require a 10 metre right-of-way on adjacent property for access and maintenance. Additional right-of-way of 28 metres by five metres may be required for guy anchors.

Additional off right-of-way access and construction workspace outside of the right-of-way may be required in certain areas during construction. AltaLink may also need an area up to 90 metres by 20 metres for stringing behind some corner structures.

Additional right-of-way of 240 metres by 20 metres will be required to accommodate an air break. The air break will include two, two-pole structures and will be located near A50 on the preferred route and B40 on the alternate route.

AltaLink will pay fair market value for additional areas. All areas listed above are shown on the attached strip mosaic maps.

INCLUDED IN THIS INFORMATION PACKAGE:

- **Project map**
- **AESO Need Overview**
- **AUC brochure: *Public involvement in a proposed utility development***

How to provide your input

We will contact landowners, residents and occupants near the proposed transmission line project to gather input and address questions or concerns. After the consultation process is complete we will file an application with the AUC. The AUC will review the application through a process in which stakeholders can participate. We will notify stakeholders when we file the application and again once the AUC has reached a decision about the project. To learn more about the AUC process and how you can become involved, please refer to the brochure included in this package titled *Public involvement in a proposed utility development*.



2611 - 3rd Avenue SE
Calgary, Alberta T2A 7W7

Let's talk transmission

[www.facebook.com/
altalinktransmission](http://www.facebook.com/altalinktransmission)



www.twitter.com/altalink



Contact us

To learn more about the proposed Welsch Wind Farm Connection project, please contact:

ALTALINK

1-877-267-1453 (toll-free)

Email: stakeholderrelations@altalink.ca

Website: www.altalink.ca/regionalprojects

To learn more about Welsch Wind Power, a wholly owned subsidiary of ENERCON, please contact:

ENERCON CANADA INC.

Hassan Shahriar

416-572-8912

hassan.shahriar@enercon.de

To learn more about Alberta's electric system and the need for the project, please contact:

ALBERTA ELECTRIC SYSTEM OPERATOR (AESO)

1-888-866-2959 (toll-free)

Email: stakeholder.relations@aeso.ca

The Alberta Electric System Operator (AESO) is an independent, not-for-profit organization responsible for the safe, reliable and economic planning and operation of the provincial transmission grid. For more information about why this project is needed, please refer to the AESO's Need Overview included with this package, or visit www.aeso.ca. If you have any questions or concerns about the need for this project you may contact the AESO directly. You can make your concerns known to an Altalink representative who will collect your personal information for the purpose of addressing your questions and/or concerns to the AESO. This process may include disclosure of your personal information to the AESO.

To learn more about the application and review process, please contact:

ALBERTA UTILITIES COMMISSION (AUC)

780-427-4903

(You can call toll-free by dialing 310-0000 before the number).

Email: utilitiesconcerns@auc.ab.ca

The Alberta Utilities Commission (AUC) ensures the fair and responsible delivery of Alberta's utility services. Altalink submits applications for new transmission projects to the AUC and the AUC reviews them in a public process.