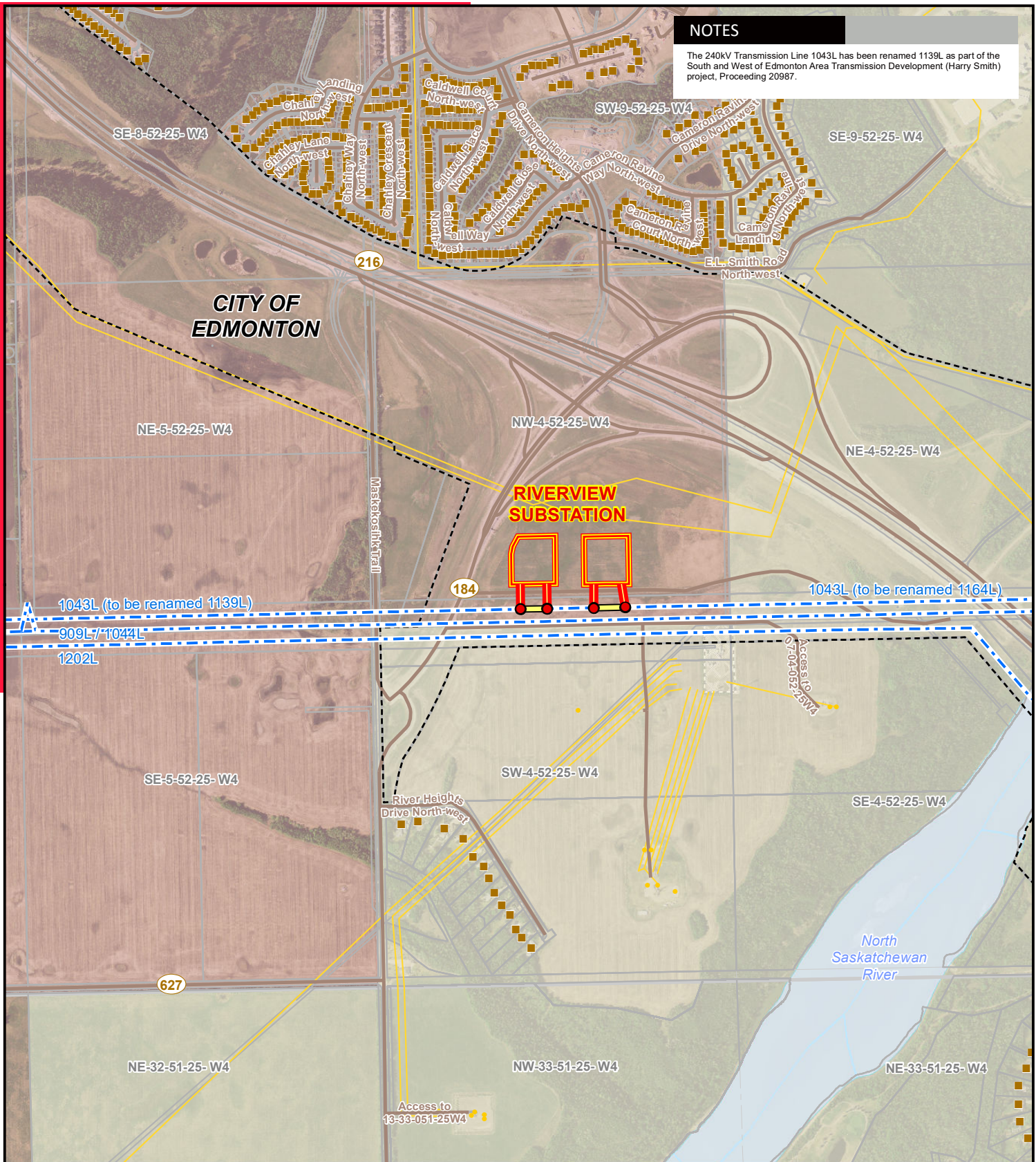


NOTES

The 240kV Transmission Line 1043L has been renamed 1139L as part of the South and West of Edmonton Area Transmission Development (Harry Smith) project, Proceeding 20987.

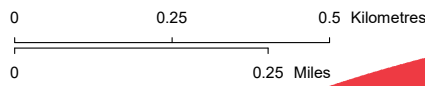


LEGEND

- Proposed Structure
 - Proposed Transmission Line Salvage
 - Existing Transmission Line
 - - - TUC Boundary
 - Residence
 - Wellsite
 - Pipeline
 - Road
 - Environmentally Significant Area
 - ▨ Other Industrial Site
 - Urban Area
 - Water Body
- EPCOR Scope of Work**
- Proposed EPCOR Transmission Line
 - Proposed EPCOR Substation

NO: 35041425 6103
 DRAWN: SG - AL
 FILE NO.: XXXXXXXX
 REVISION: 1.00.03
 AL FOLDER: Epcor Riverview Substation Interconnection

DATE: 2017-08-24



DETAIL PHOTO DP1



PROPOSED

EPCOR Riverview Substation Connection

Photography dated: 2013 Source: Valtus Imagery Services 40cm Colour Ortho Photography
 Although there is no reason to believe that there are any errors associated with the data used to generate this product or in the product itself, users of these data are advised that errors in the data may be present.