

How to read your map

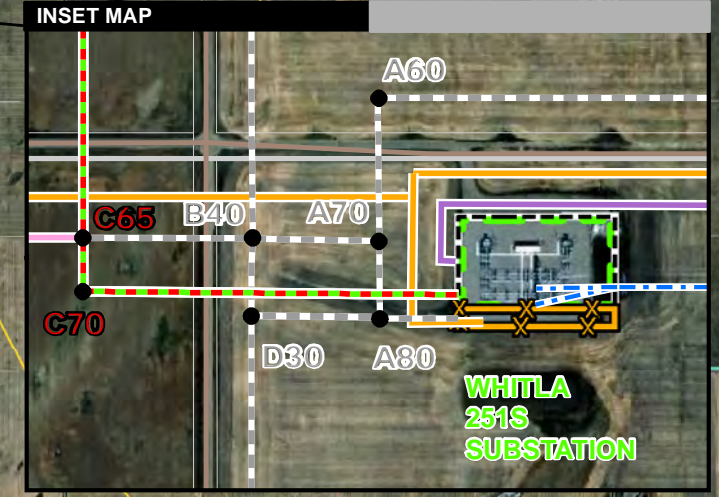
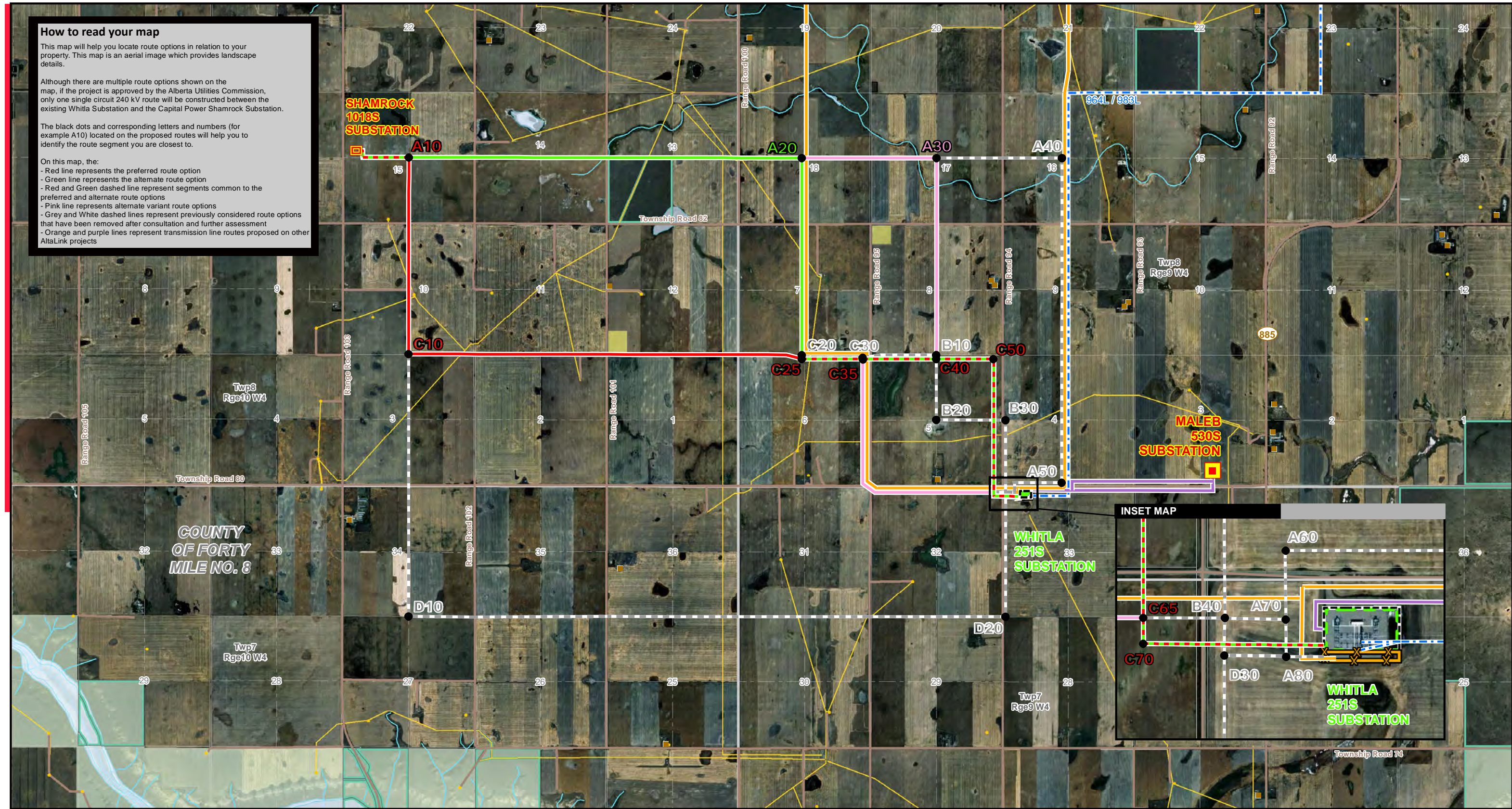
This map will help you locate route options in relation to your property. This map is an aerial image which provides landscape details.

Although there are multiple route options shown on the map, if the project is approved by the Alberta Utilities Commission, only one single circuit 240 kV route will be constructed between the existing Whitley Substation and the Capital Power Shamrock Substation.

The black dots and corresponding letters and numbers (for example A10) located on the proposed routes will help you to identify the route segment you are closest to.

On this map, the:

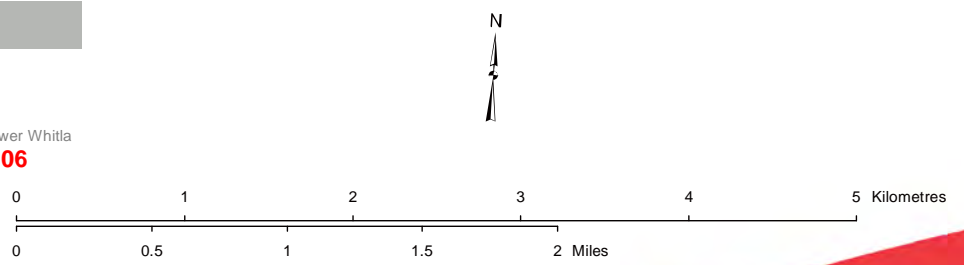
- Red line represents the preferred route option
- Green line represents the alternate route option
- Red and Green dashed line represent segments common to the preferred and alternate route options
- Pink line represents alternate variant route options
- Grey and White dashed lines represent previously considered route options that have been removed after consultation and further assessment
- Orange and purple lines represent transmission line routes proposed on other AltaLink projects



LEGEND

- | | | |
|---|------------------------------------|--|
| ● Point Designation | ▭ Proposed Customer Substation | ▭ Water Body |
| — Preferred Route Option | ▭ Proposed Laydown Area | ▭ Other AltaLink Project |
| — Alternate Route Option | ● Residence | ▭ Proposed 3rd Party Substation |
| — Preferred/ Alternate Route Option Overlap | ● Wellsite | — Proposed RES Forty Mile Transmission Line |
| — Alternate Variant Route Option | — Pipeline | — Proposed Suncor 40 Mile Transmission Line |
| — Previously Considered Route Option | — Road | ▭ Proposed RES Forty Mile Substation Expansion |
| — Existing Transmission Line | ▭ Crown Land | |
| ▭ Proposed Upgrade to Existing Substation | ▭ Environmentally Significant Area | |

NO: D.0647
 DRAWN: KS - CH2M
 FILE NO.: 694146
 REVISION: 1.00.00
 AL FOLDER: Capital Power Whitley
DATE: 2018-02-06



Photography dated: 2018 Source: ESRI Basemap Imagery
 Although there is no reason to believe that there are any errors associated with the data used to generate this product or in the product itself, users of these data are advised that errors in the data may be present.

DETAIL PHOTO DP1



PROPOSED
 Capital Power Whitley Wind
 Facility Connection