

**NOTES**

Underground fibre optic telecommunications cable will be buried in the Approved Right of Way.

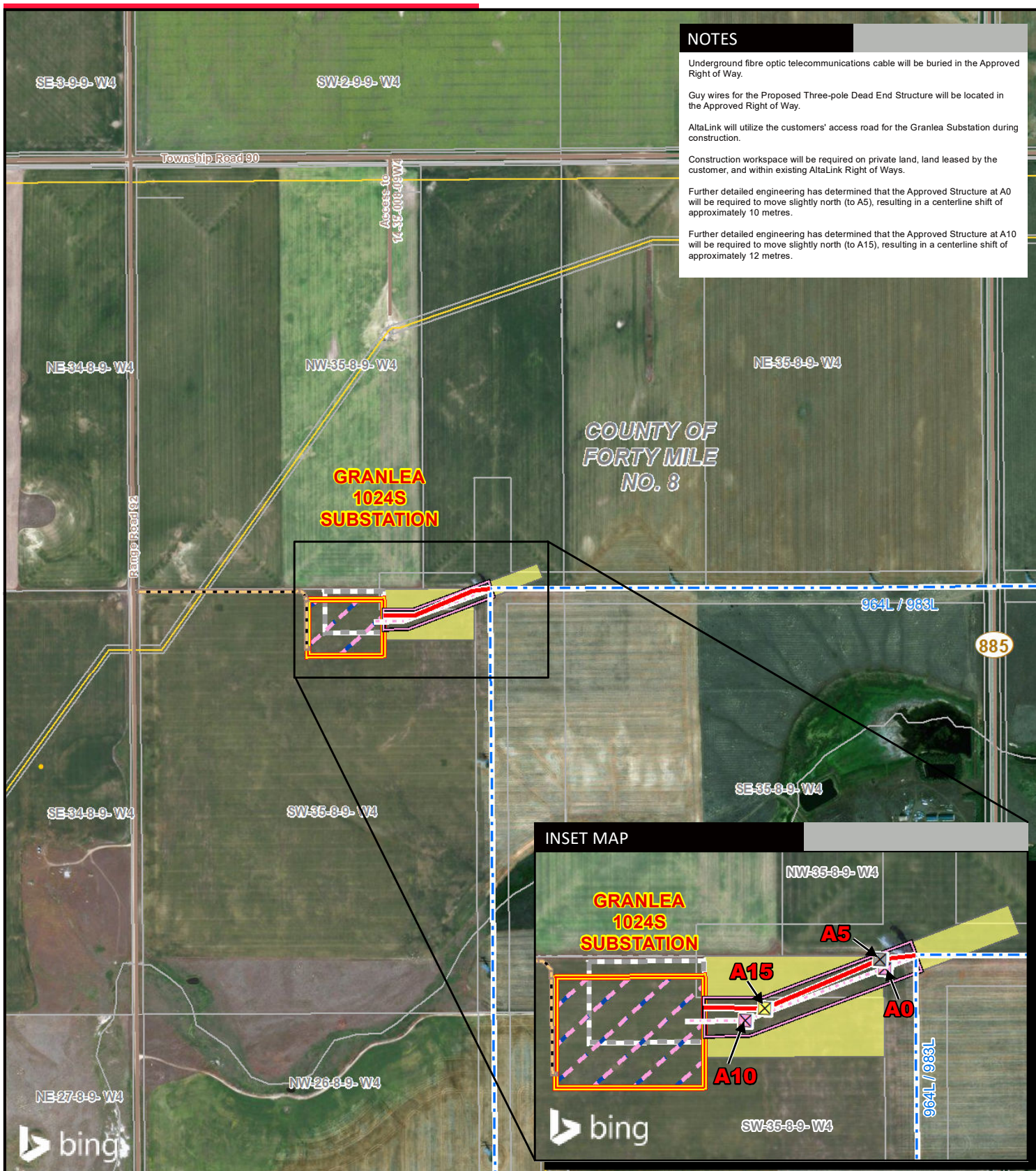
Guy wires for the Proposed Three-pole Dead End Structure will be located in the Approved Right of Way.

AltaLink will utilize the customers' access road for the Granlea Substation during construction.

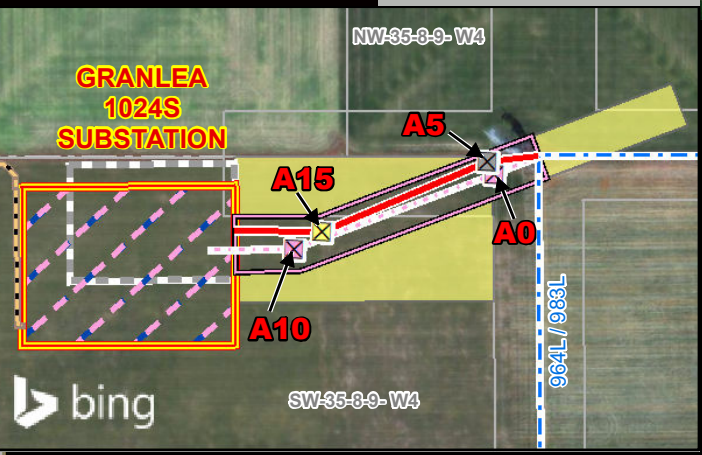
Construction workspace will be required on private land, land leased by the customer, and within existing AltaLink Right of Ways.

Further detailed engineering has determined that the Approved Structure at A0 will be required to move slightly north (to A5), resulting in a centerline shift of approximately 10 metres.

Further detailed engineering has determined that the Approved Structure at A10 will be required to move slightly north (to A15), resulting in a centerline shift of approximately 12 metres.



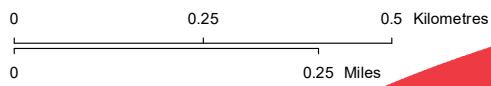
**INSET MAP**



**LEGEND**

- Point Designation
- ⊗ Proposed Single-Pole Deadend Structure
- ⊗ Proposed Three-Pole Deadend Structure
- ⊗ Approved Structure Location
- Proposed Transmission Line
- - - Approved Transmission Line
- - - Existing Transmission Line
- Approved Right of Way Boundary
- Customer Access Road
- ⊗ Approved Customer Substation
- ⊗ Previously Proposed Customer Substation
- Proposed Construction Workspace
- Wellsite
- Pipeline
- Road

NO: 35023063 - 7424  
 DRAWN: SG - AL  
 FILE NO.: XXXXXXX  
 REVISION: 1.00.03  
 AL FOLDER: Suncor Granlea Wind Farm Connection  
**DATE: 2020-02-10**



**DETAIL PHOTO DP1**



**APPROVED**  
 Suncor Granlea Connection Project

Service Layer Credits: © 2020 Microsoft Corporation © 2020 DigitalGlobe ©CNES (2020) Distribution Airbus DS  
 Although there is no reason to believe that there are any errors associated with the data used to generate this product or in the product itself, users of these data are advised that errors in the data may be present.