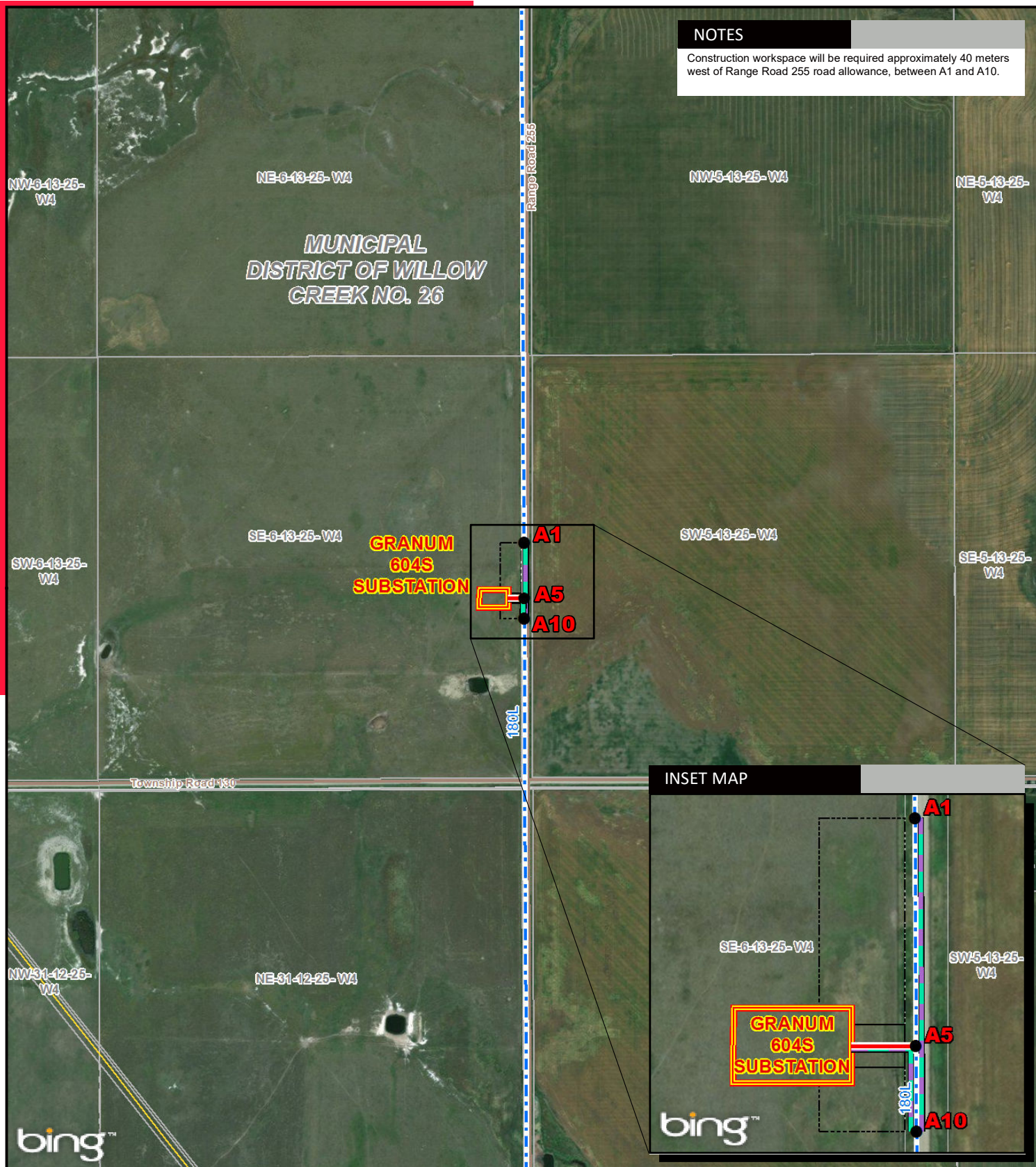


NOTES

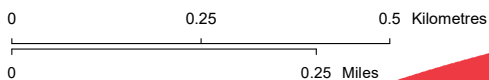
Construction workspace will be required approximately 40 meters west of Range Road 255 road allowance, between A1 and A10.



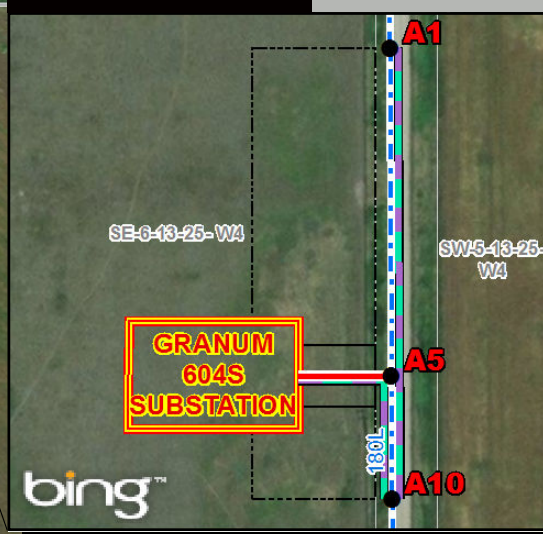
LEGEND

- Point Designation
- Proposed 180AL Transmission Line
- Proposed Underground Fibre Optic Cable
- - - Existing Transmission Line
- 20m Right of Way Boundary
- ▭ Proposed Customer Substation Target Area
- - - Construction Workspace
- Pipeline
- Road

NO: 35024285 - 6201
 DRAWN: SG - AL
 FILE NO.: XXXXXXX
 REVISION: 0.01.02
 AL FOLDER: Clareholm Solar Connection
DATE: 2018-03-12



INSET MAP



DETAIL PHOTO DP1



PROPOSED
 Clareholm Solar Connection

Service Layer Credits: © 2018 Microsoft Corporation © 2018 DigitalGlobe ©CNES (2018) Distribution Airbus DS. Although there is no reason to believe that there are any errors associated with the data used to generate this product or in the product itself, users of these data are advised that errors in the data may be present.