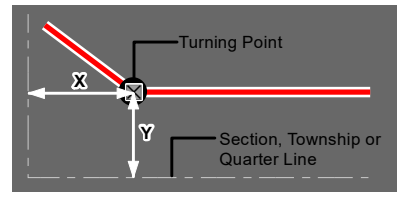


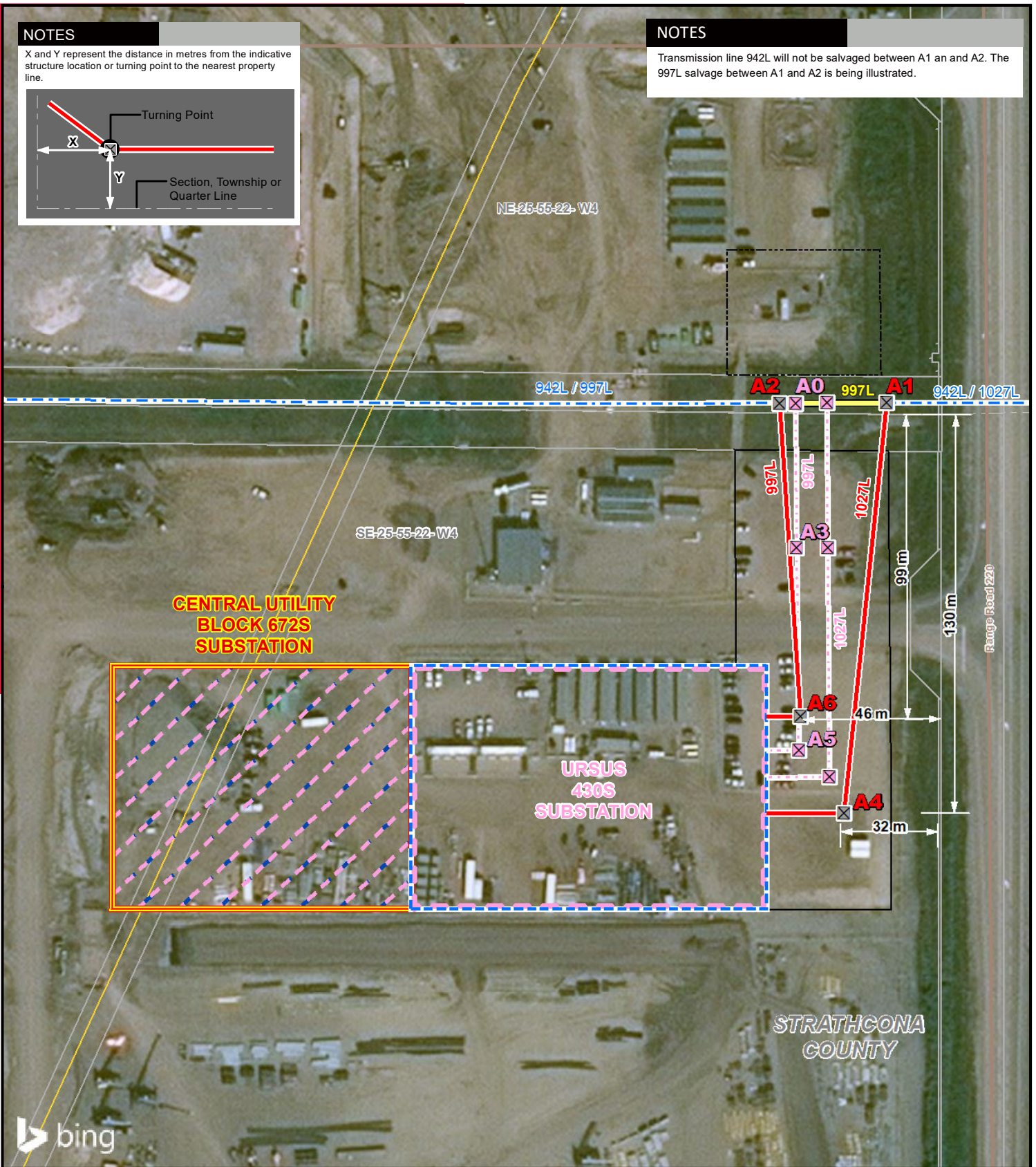
NOTES

X and Y represent the distance in metres from the indicative structure location or turning point to the nearest property line.



NOTES

Transmission line 942L will not be salvaged between A1 and A2. The 997L salvage between A1 and A2 is being illustrated.

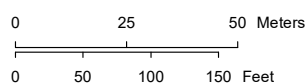


LEGEND

- Point Designation
- ⊗ Indicative Structure Location
- ⊗ Approved Indicative Structure Location
- Proposed Transmission Line
- Proposed 997L Transmission Line Salvage
- Approved Transmission Line
- Existing Transmission Line
- Right of Way Boundary
- Approved Substation
- Approved Customer Substation
- Proposed Construction Workspace
- Pipeline
- Road

NO: 35022771 - 6201
 DRAWN: SG - AL
 FILE NO.: XXXXXXX
 REVISION: 0.00.00
 AL FOLDER: Inter_Pipeline_Strathcona_Cogeneration_Interconnection

DATE: 2020-01-30



Service Layer Credits: © 2020 Microsoft Corporation © 2019 DigitalGlobe ©CNES (2019) Distribution Airbus DS
 Although there is no reason to believe that there are any errors associated with the data used to generate this product or in the product itself, users of these data are advised that errors in the data may be present.

FOCUS PHOTO FP1



PROPOSED
 Inter Pipeline Strathcona
 Cogeneration Facility Connection
 Amendment