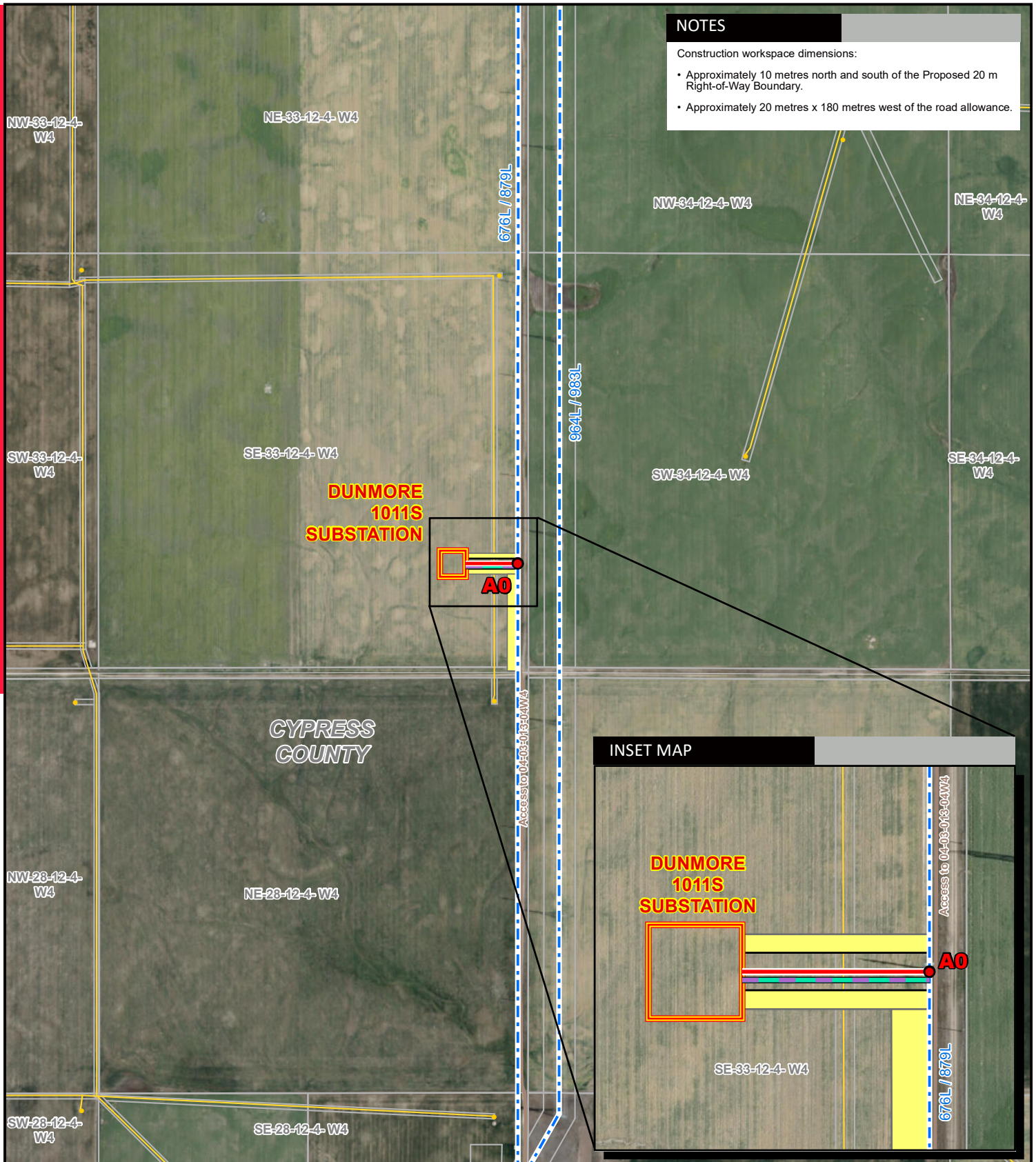


**NOTES**

Construction workspace dimensions:

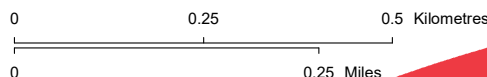
- Approximately 10 metres north and south of the Proposed 20 m Right-of-Way Boundary.
- Approximately 20 metres x 180 metres west of the road allowance.



**LEGEND**

- Point Designation
- Proposed Structure Modification
- Proposed Transmission Line
- Proposed Underground Fibre Optic Cable
- - - Existing Transmission Line
- Proposed 20m Right of Way Boundary
- Customer Substation Target Area
- Construction Workspace
- Wellsite
- Pipeline
- Road

NO: 35031003 - 6201  
 DRAWN: SG - AL  
 FILE NO.: XXXXXXX  
 REVISION: 0.01.05  
 AL FOLDER: Dunmore Solar Connection  
**DATE: 2021-06-03**



**DETAIL PHOTO DP1**



**PROPOSED**  
 Dunmore Solar Power  
 Project Connection

Service Layer Credits: Source: Esri, Maxar, GeoEye, Earthstar Geographics, CNES/Airbus DS, USDA, USGS, AeroGRID, IGN, and the GIS User Community.  
 Although there is no reason to believe that there are any errors associated with the data used to generate this product or in the product itself, users of these data are advised that errors in the data may be present.