

LEGEND

Existing Substation

Proposed Transmission Line Rebuild

Existing Transmission Line

Existing Underground Transmission Line

Map Sheet

Hamlet or Locality

Municipal or County Boundary

Railway

Road

First Nations Reserve

Urban Area

Water Body

NO: 35026826 - 0025
DRAWN: MR - AL
FILE NO.: XXXXXXXX
REVISION: 0.01.02
AL FOLDER: 113L Transmission Line Rebuild
DATE: 2020-01-07

Although there is no reason to believe that there are any errors associated with the data used to generate this product or in the product itself, users of these data are advised that errors in the data may be present.

N

0 2.5 5 Kilometres

0 2.5 Miles

STRIP INDEX **SI**



ALTALINK
A BERKSHIRE HATHAWAY ENERGY COMPANY

PROPOSED
113L Transmission Line Rebuild



LEGEND

Existing Substation

Proposed Transmission Line Rebuild

Existing Transmission Line

Existing Underground Transmission Line

Access Trail

Laydown Yard

Hamlet or Locality

Church

School

Wellsite

Municipal or County Boundary

Pipeline

Railway

Road

First Nations Reserve

Gravel Pit

Open Pit Mine

Other Industrial Site

Tailing Pile

Other Protected Area

Park

Urban Area

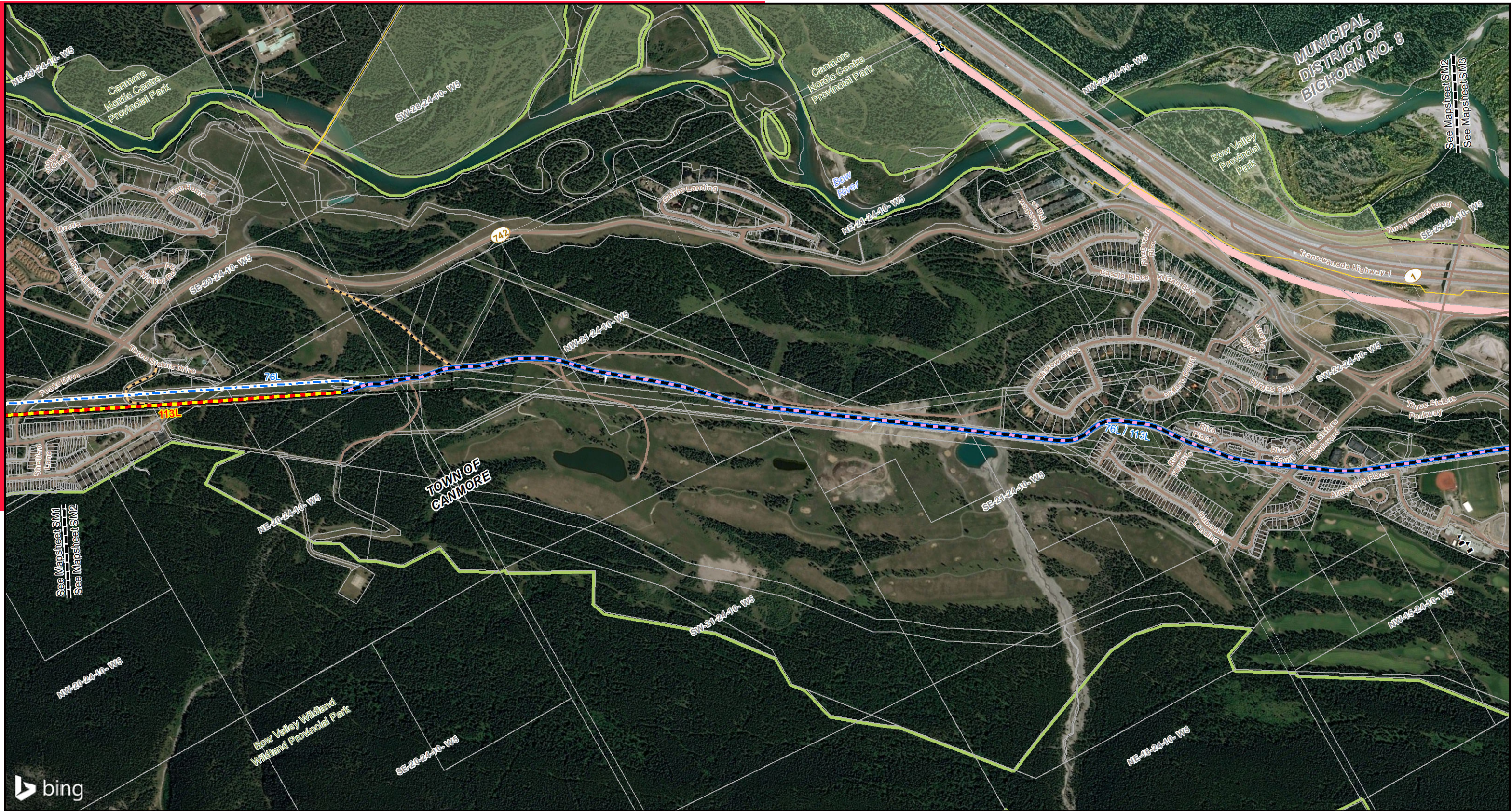
NO: 35026826 - 0025
DRAWN: MR - AL
FILE NO.: XXXXXXX
REVISION: 0.01.02
AL FOLDER: 113L Transmission Line Rebuild
DATE: 2020-01-07

Service Layer Credits: © 2019 Microsoft Corporation © 2019 DigitalGlobe ©CNES (2019) Distribution Airbus DS and Esri, DigitalGlobe, GeoEye, Earthstar Geographics, CNES/Airbus DS, USDA, USGS, AeroGRID, IGN, and the GIS User Community
Although there is no reason to believe that there are any errors associated with the data used to generate this product or in the product itself, users of these data are advised that errors in the data may be present.

STRIP MOSAIC **SM1**

PROPOSED

113L Transmission Line Rebuild



LEGEND

Existing Substation

Proposed Transmission Line Rebuild

Existing Transmission Line

Existing Underground Transmission Line

Access Trail

Laydown Yard

Hamlet or Locality

Church

School

Wellsite

Municipal or County Boundary

Pipeline

Railway

Road

First Nations Reserve

Gravel Pit

Open Pit Mine

Other Industrial Site

Tailing Pile

Other Protected Area

Park

Urban Area

NO: 35026826 - 0025
DRAWN: MR - AL
FILE NO.: XXXXXX
REVISION: 0.01.02
AL FOLDER: 113L Transmission
Line Rebuild
DATE: 2020-01-07

00.250.5 Kilometres

00.25 Miles

STRIP MOSAIC **SM2**

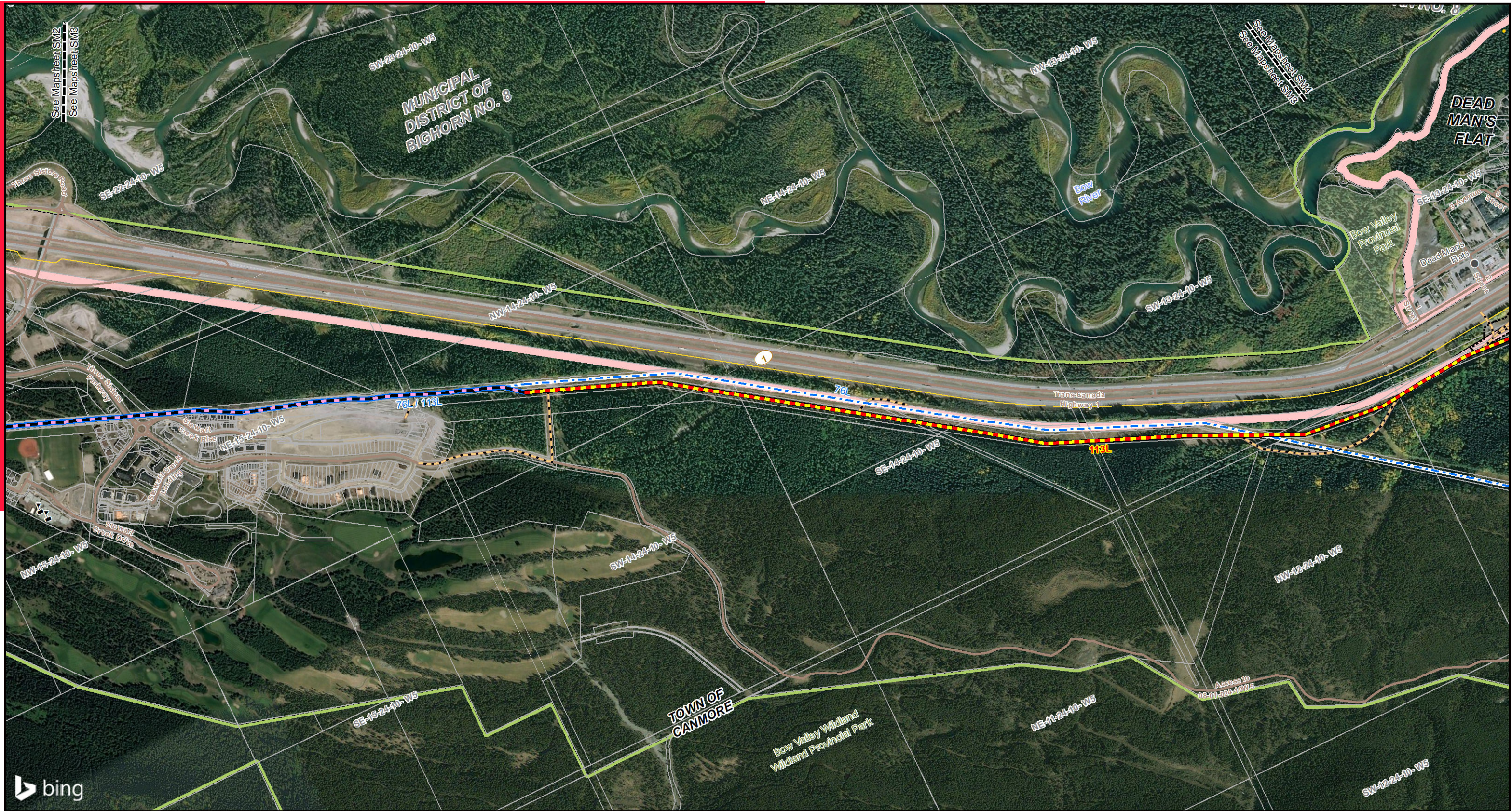
ALTALINK

A BERKSHIRE HATHAWAY ENERGY COMPANY

PROPOSED

113L Transmission Line Rebuild

Service Layer Credits: © 2019 Microsoft Corporation © 2019 DigitalGlobe ©CNES (2019) Distribution Airbus DS and Esri, DigitalGlobe, GeoEye, Earthstar Geographics, CNES/Airbus DS, USDA, USGS, AeroGRID, IGN, and the GIS User Community
Although there is no reason to believe that there are any errors associated with the data used to generate this product or in the product itself, users of these data are advised that errors in the data may be present.

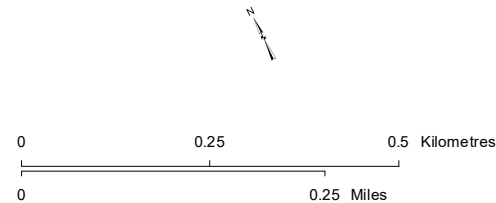


LEGEND

- | | | |
|--|------------------------------|-----------------------|
| Existing Substation | School | Gravel Pit |
| Proposed Transmission Line Rebuild | Wellsite | Open Pit Mine |
| Existing Transmission Line | Municipal or County Boundary | Other Industrial Site |
| Existing Underground Transmission Line | Pipeline | Tailing Pile |
| Access Trail | Railway | Other Protected Area |
| Laydown Yard | Road | Park |
| Hamlet or Locality | First Nations Reserve | Urban Area |
| Church | | |

NO: 35026826 - 0025
DRAWN: MR - AL
FILE NO.: XXXXXXX
REVISION: 0.01.02
AL FOLDER: 113L Transmission
Line Rebuild
DATE: 2020-01-07

Service Layer Credits: © 2019 Microsoft Corporation © 2019 DigitalGlobe ©CNES (2019) Distribution Airbus DS and Esri, DigitalGlobe, GeoEye, Earthstar Geographics, CNES/Airbus DS, USDA, USGS, AeroGRID, IGN, and the GIS User Community
Although there is no reason to believe that there are any errors associated with the data used to generate this product or in the product itself, users of these data are advised that errors in the data may be present.



STRIP MOSAIC **SM3**



PROPOSED

113L Transmission Line Rebuild

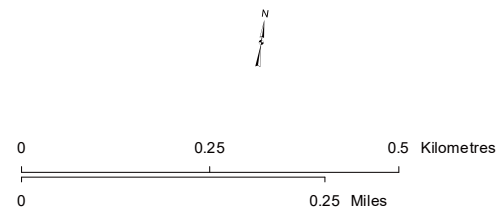


LEGEND

- | | | |
|--|------------------------------|-----------------------|
| Existing Substation | School | Gravel Pit |
| Proposed Transmission Line Rebuild | Wellsite | Open Pit Mine |
| Existing Transmission Line | Municipal or County Boundary | Other Industrial Site |
| Existing Underground Transmission Line | Pipeline | Tailing Pile |
| Access Trail | Railway | Other Protected Area |
| Laydown Yard | Road | Park |
| Hamlet or Locality | First Nations Reserve | Urban Area |
| Church | | |

NO: 35026826 - 0025
DRAWN: MR - AL
FILE NO.: XXXXXXX
REVISION: 0.01.02
AL FOLDER: 113L Transmission
Line Rebuild
DATE: 2020-01-07

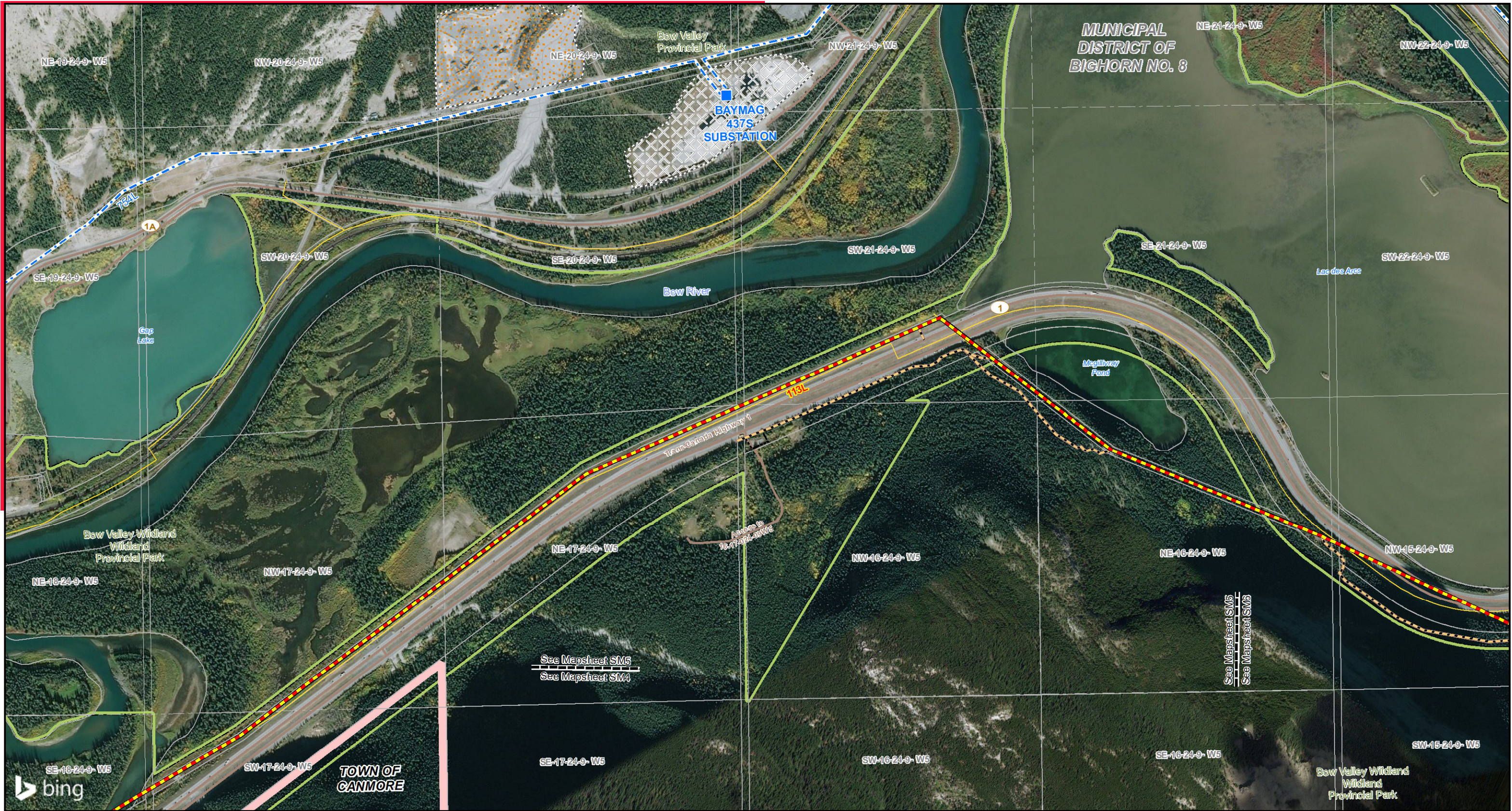
Service Layer Credits: © 2019 Microsoft Corporation © 2019 DigitalGlobe ©CNES (2019) Distribution Airbus DS and Esri, DigitalGlobe, GeoEye, Earthstar Geographics, CNES/Airbus DS, USDA, USGS, AeroGRID, IGN, and the GIS User Community
Although there is no reason to believe that there are any errors associated with the data used to generate this product or in the product itself, users of these data are advised that errors in the data may be present.



STRIP MOSAIC **SM4**

ALTALINK
A BERKSHIRE HATHAWAY ENERGY COMPANY

PROPOSED
113L Transmission Line Rebuild



LEGEND

Existing Substation

Proposed Transmission Line Rebuild

Existing Transmission Line

Existing Underground Transmission Line

Access Trail

Laydown Yard

Hamlet or Locality

Church

School

Wellsite

Municipal or County Boundary

Pipeline

Railway

Road

First Nations Reserve

Gravel Pit

Open Pit Mine

Other Industrial Site

Tailing Pile

Other Protected Area

Park

Urban Area

NO: 35026826 - 0025
DRAWN: MR - AL
FILE NO.: XXXXXXX
REVISION: 0.01.02
AL FOLDER: 113L Transmission Line Rebuild
DATE: 2020-01-07

Service Layer Credits: © 2019 Microsoft Corporation © 2019 DigitalGlobe ©CNES (2019) Distribution Airbus DS and Esri, DigitalGlobe, GeoEye, Earthstar Geographics, CNES/Airbus DS, USDA, USGS, AeroGRID, IGN, and the GIS User Community
Although there is no reason to believe that there are any errors associated with the data used to generate this product or in the product itself, users of these data are advised that errors in the data may be present.

STRIP MOSAIC **SM5**

ALTALINK
A BERKSHIRE HATHAWAY ENERGY COMPANY

PROPOSED
113L Transmission Line Rebuild



LEGEND

Existing Substation

Proposed Transmission Line Rebuild

Existing Transmission Line

Existing Underground Transmission Line

Access Trail

Laydown Yard

Hamlet or Locality

Church

School

Wellsite

Municipal or County Boundary

Pipeline

Railway

Road

First Nations Reserve

Gravel Pit

Open Pit Mine

Other Industrial Site

Tailing Pile

Other Protected Area

Park

Urban Area

NO: 35026826 - 0025
DRAWN: MR - AL
FILE NO.: XXXXXXX
REVISION: 0.01.02
AL FOLDER: 113L Transmission Line Rebuild
DATE: 2020-01-07

00.250.5

Kilometres

00.250.5

Miles

STRIP MOSAIC

SM6

ALTALINK

A BERKSHIRE HATHAWAY ENERGY COMPANY

PROPOSED

113L Transmission Line Rebuild

Service Layer Credits: © 2019 Microsoft Corporation © 2019 DigitalGlobe ©CNES (2019) Distribution Airbus DS and Esri, DigitalGlobe, GeoEye, Earthstar Geographics, CNES/Airbus DS, USDA, USGS, AeroGRID, IGN, and the GIS User Community
Although there is no reason to believe that there are any errors associated with the data used to generate this product or in the product itself, users of these data are advised that errors in the data may be present.

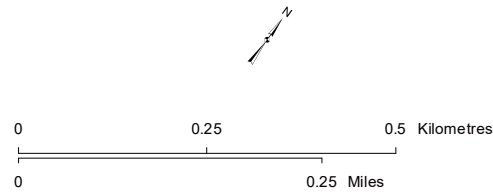


LEGEND

- | | | |
|--|------------------------------|-----------------------|
| Existing Substation | School | Gravel Pit |
| Proposed Transmission Line Rebuild | Wellsite | Open Pit Mine |
| Existing Transmission Line | Municipal or County Boundary | Other Industrial Site |
| Existing Underground Transmission Line | Pipeline | Tailing Pile |
| Access Trail | Railway | Other Protected Area |
| Laydown Yard | Road | Park |
| Hamlet or Locality | First Nations Reserve | Urban Area |
| Church | | |

NO: 35026826 - 0025
DRAWN: MR - AL
FILE NO.: XXXXXXX
REVISION: 0.01.02
AL FOLDER: 113L Transmission
Line Rebuild
DATE: 2020-01-07

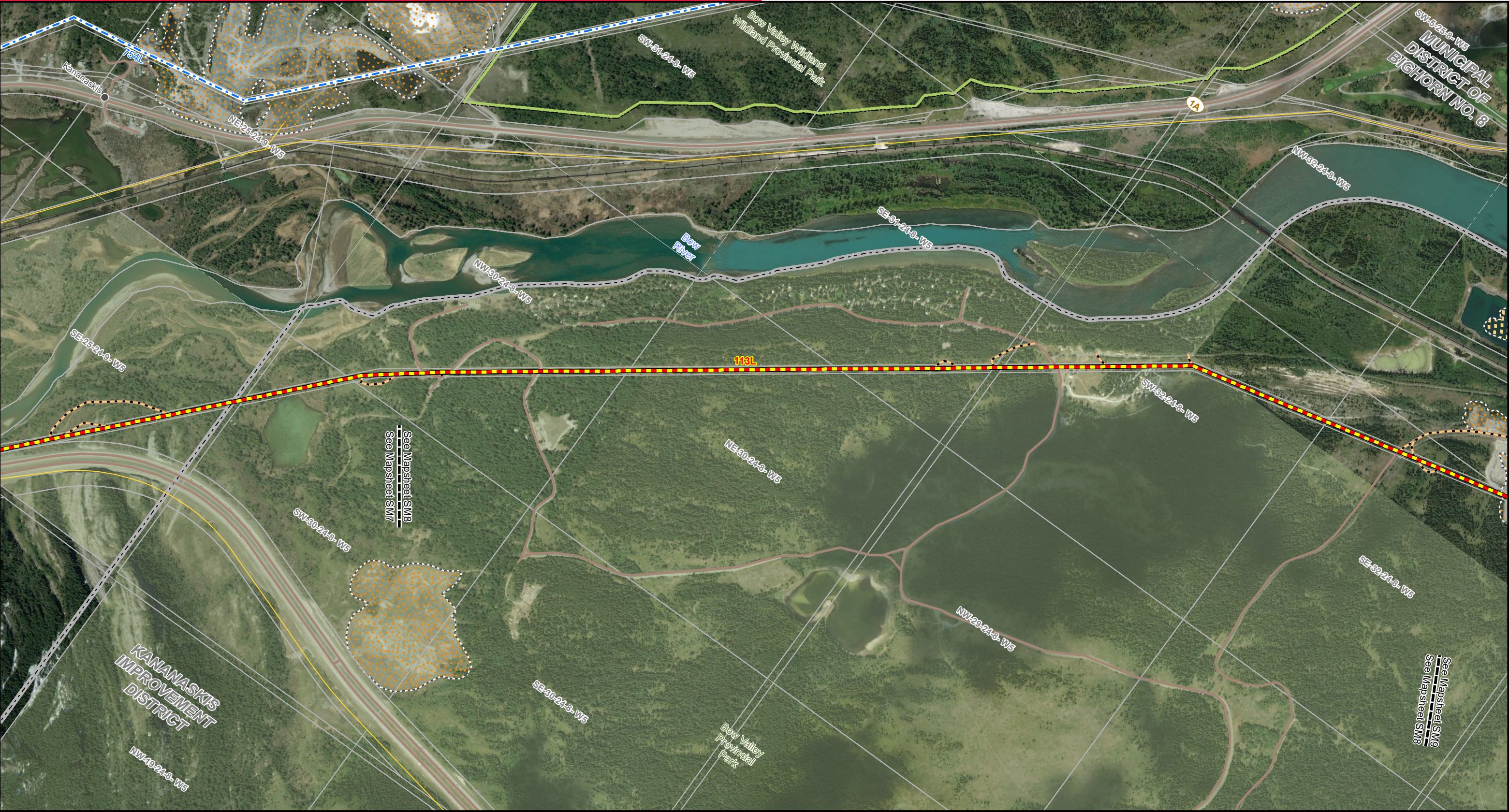
Service Layer Credits: © 2019 Microsoft Corporation © 2019 DigitalGlobe ©CNES (2019) Distribution Airbus DS and Esri, DigitalGlobe, GeoEye, Earthstar Geographics, CNES/Airbus DS, USDA, USGS, AeroGRID, IGN, and the GIS User Community
Although there is no reason to believe that there are any errors associated with the data used to generate this product or in the product itself, users of these data are advised that errors in the data may be present.



STRIP MOSAIC **SM7**

ALTALINK
A BERKSHIRE HATHAWAY ENERGY COMPANY

PROPOSED
113L Transmission Line Rebuild



LEGEND

Existing Substation

Proposed Transmission Line Rebuild

Existing Transmission Line

Existing Underground Transmission Line

Access Trail

Laydown Yard

Hamlet or Locality

Church

School

Wellsite

Municipal or County Boundary

Pipeline

Railway

Road

First Nations Reserve

Gravel Pit

Open Pit Mine

Other Industrial Site

Tailing Pile

Other Protected Area

Park

Urban Area

NO: 35026826 - 0025
DRAWN: MR - AL
FILE NO.: XXXXXXX
REVISION: 0.01.02
AL FOLDER: 113L Transmission
Line Rebuild
DATE: 2020-01-07

0

0.25

0.5

Kilometres

0

0.25

Miles

STRIP MOSAIC **SM8**

ALTALINK

A BERKSHIRE HATHAWAY ENERGY COMPANY

PROPOSED

113L Transmission Line Rebuild

Service Layer Credits: © 2019 Microsoft Corporation © 2019 DigitalGlobe ©CNES (2019) Distribution Airbus DS and Esri, DigitalGlobe, GeoEye, Earthstar Geographics, CNES/Airbus DS, USDA, USGS, AeroGRID, IGN, and the GIS User Community
Although there is no reason to believe that there are any errors associated with the data used to generate this product or in the product itself, users of these data are advised that errors in the data may be present.

