

LEGEND

Existing Substation	Municipal or County Boundary	Park
Potential Transmission Line Relocation	Railway	Urban Area
Proposed Transmission Line Rebuild	River or Stream	Water Body
Previously Considered Transmission Line	Road	
Existing Transmission Line	Airport	
Map Sheet	Environmentally Significant Area	
Hamlet or Locality	First Nations Reserve	
Residence		

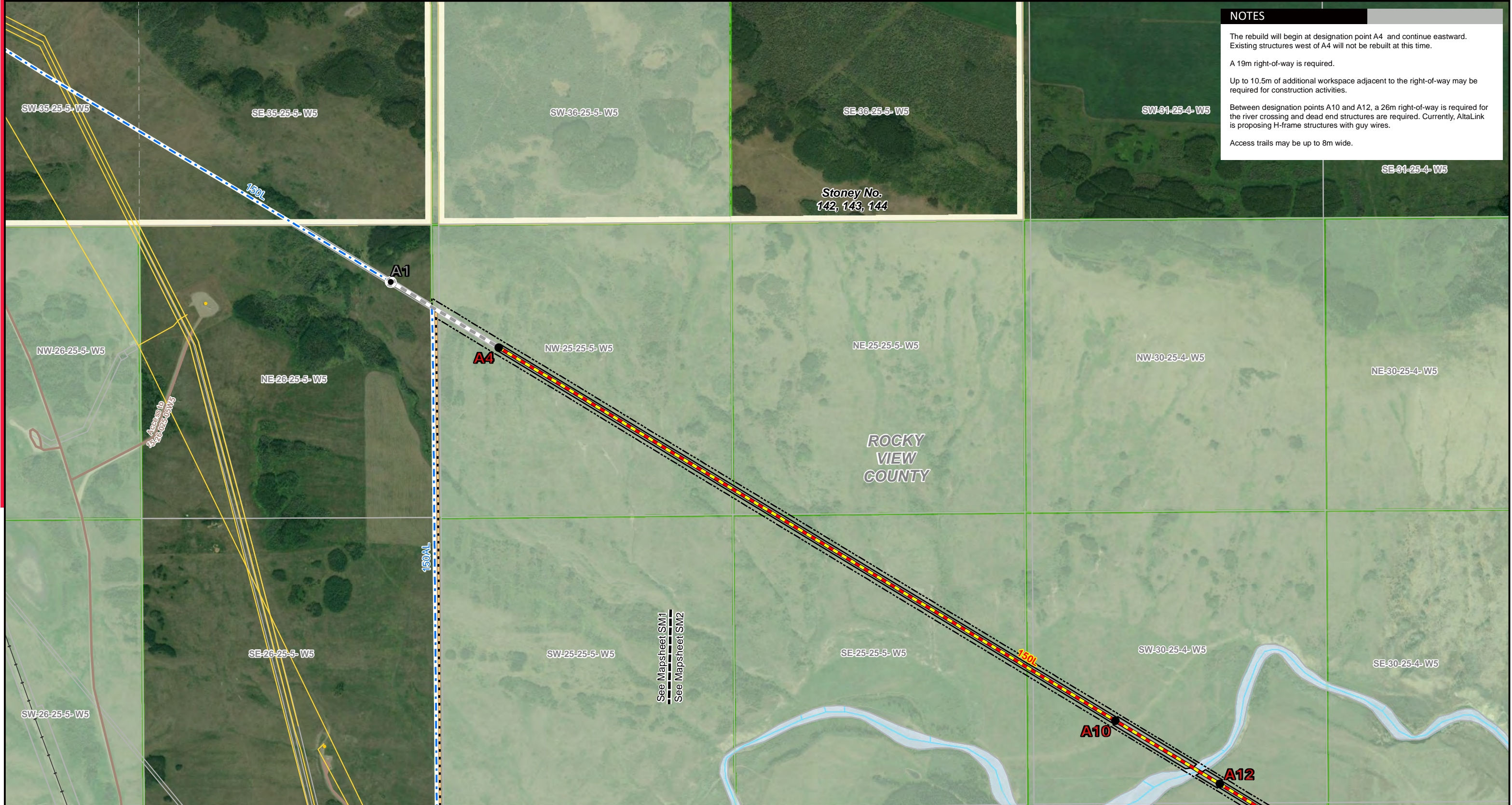
NO: 35026416 - 0025
 DRAWN: SG - AL
 FILE NO.: XXXXXXXX
 REVISION: 1.04.17
 AL FOLDER: 150L Transmission Line Rebuild
DATE: 2020-09-16

0 2.5 5 Kilometres
 0 2.5 Miles

Although there is no reason to believe that there are any errors associated with the data used to generate this product or in the product itself, users of these data are advised that errors in the data may be present.

STRIP INDEX SI

PROPOSED
 150L Transmission Line Rebuild



NOTES

The rebuild will begin at designation point A4 and continue eastward. Existing structures west of A4 will not be rebuilt at this time.

A 19m right-of-way is required.

Up to 10.5m of additional workspace adjacent to the right-of-way may be required for construction activities.

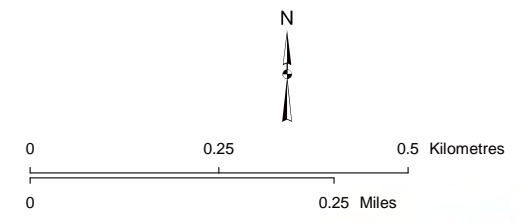
Between designation points A10 and A12, a 26m right-of-way is required for the river crossing and dead end structures are required. Currently, AltaLink is proposing H-frame structures with guy wires.

Access trails may be up to 8m wide.

LEGEND		
● Point Designation	Proposed Construction Workspace	Pipeline
● Rejected Point Designation	Proposed Guy Anchor	Railway
— Potential Transmission Line Relocation	Cemetery	River or Stream
— Proposed Transmission Line Rebuild	Day Care	Road
— Previously Considered Transmission Line	Residence	Airport
— Existing Transmission Line	School	Environmentally Significant Area
— Proposed Right of Way Boundary	Wellsite	First Nations Reserve
— Access Trail	Municipal or County Boundary	Urban Area

NO: 35026416 - 0025
 DRAWN: SG - AL
 FILE NO.: XXXXXXX
 REVISION: 1.06.17
 AL FOLDER: 150L Transmission Line Rebuild
DATE: 2020-09-16

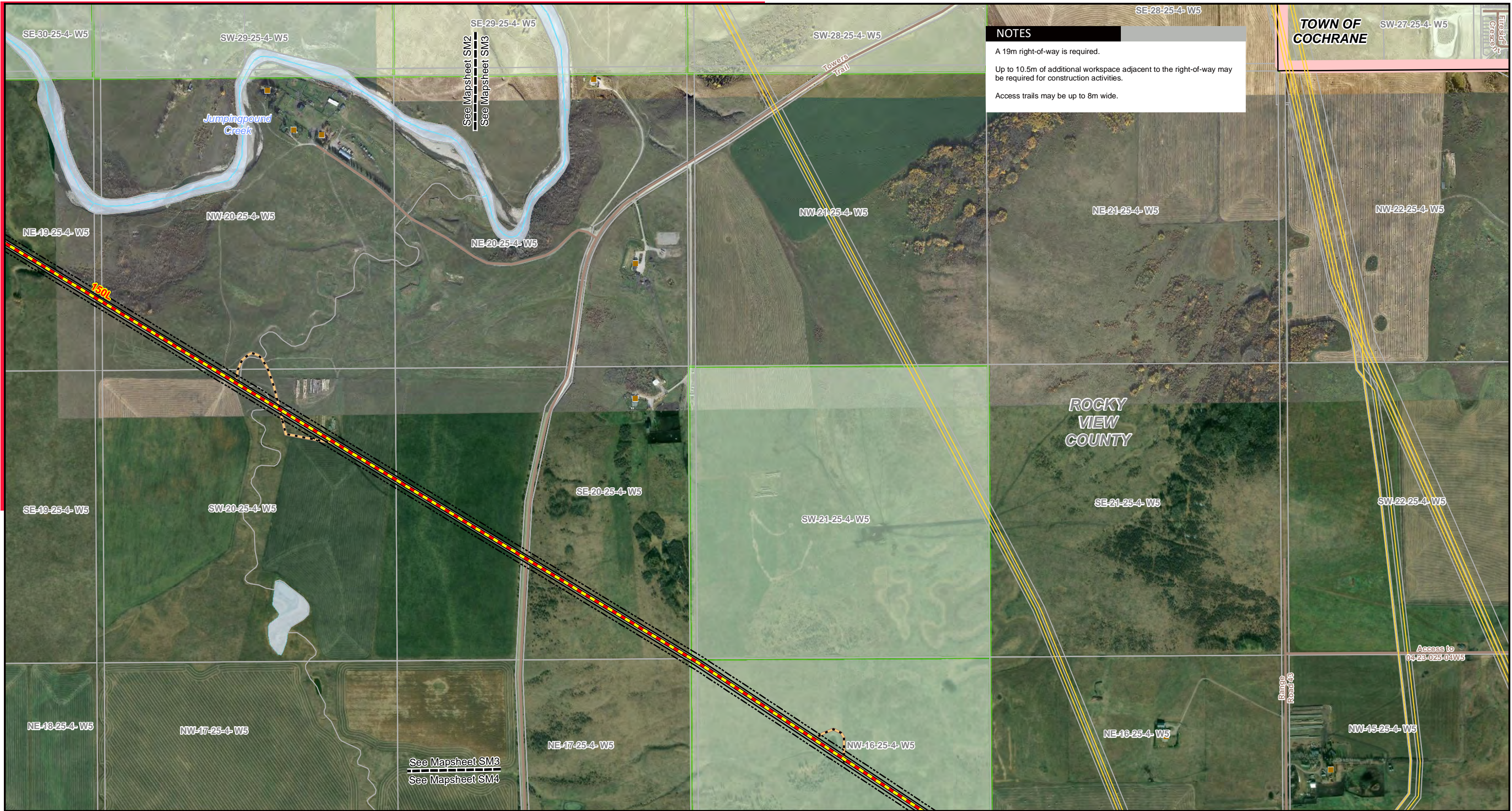
Service Layer Credits: Source: Esri, DigitalGlobe, GeoEye, Earthstar Geographics, CNES/Airbus DS, USDA, USGS, AeroGRID, IGN, and the GIS User Community
 Although there is no reason to believe that there are any errors associated with the data used to generate this product or in the product itself, users of these data are advised that errors in the data may be present.



STRIP MOSAIC SM1

PROPOSED

150L Transmission Line Rebuild



NOTES

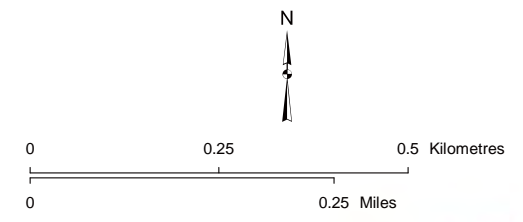
A 19m right-of-way is required.

Up to 10.5m of additional workspace adjacent to the right-of-way may be required for construction activities.

Access trails may be up to 8m wide.

LEGEND			
●	Point Designation	▭	Proposed Construction Workspace
●	Rejected Point Designation	■	Proposed Guy Anchor
—	Potential Transmission Line Relocation	⚰	Cemetery
—	Proposed Transmission Line Rebuild	⚰	Day Care
—	Previously Considered Transmission Line	🏠	Residence
—	Existing Transmission Line	🎓	School
—	Proposed Right of Way Boundary	●	Wellsite
—	Access Trail	▭	Municipal or County Boundary
—		—	Pipeline
—		—	Railway
—		—	River or Stream
—		—	Road
—		▭	Airport
—		▭	Environmentally Significant Area
—		▭	First Nations Reserve
—		▭	Urban Area
—		▭	Water Body

NO: 35026416 - 0025
 DRAWN: SG - AL
 FILE NO.: XXXXXXX
 REVISION: 1.06.17
 AL FOLDER: 150L Transmission Line Rebuild
DATE: 2020-09-16



Service Layer Credits: Source: Esri, DigitalGlobe, GeoEye, Earthstar Geographics, CNES/Airbus DS, USDA, USGS, AeroGRID, IGN, and the GIS User Community
 Although there is no reason to believe that there are any errors associated with the data used to generate this product or in the product itself, users of these data are advised that errors in the data may be present.

STRIP MOSAIC SM3

PROPOSED

150L Transmission Line Rebuild



NOTES

A 19m right-of-way is required.

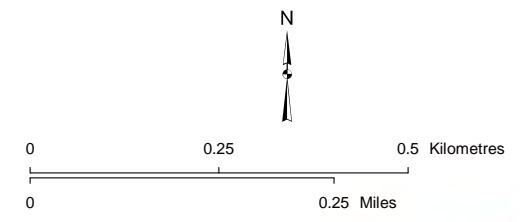
Up to 10.5m of additional workspace adjacent to the right-of-way may be required for construction activities.

Access trails may be up to 8m wide.

LEGEND

- | | | | |
|---|---------------------------------|------------------------------------|------------|
| ● Point Designation | Proposed Construction Workspace | — Pipeline | Water Body |
| ● Rejected Point Designation | Proposed Guy Anchor | — Railway | |
| — Potential Transmission Line Relocation | Cemetery | — River or Stream | |
| — Proposed Transmission Line Rebuild | Day Care | — Road | |
| — Previously Considered Transmission Line | Residence | — Airport | |
| — Existing Transmission Line | School | — Environmentally Significant Area | |
| — Proposed Right of Way Boundary | Wellsite | — First Nations Reserve | |
| — Access Trail | Municipal or County Boundary | — Urban Area | |

NO: 35026416 - 0025
 DRAWN: SG - AL
 FILE NO.: XXXXXXX
 REVISION: 1.06.17
 AL FOLDER: 150L Transmission Line Rebuild
DATE: 2020-09-16



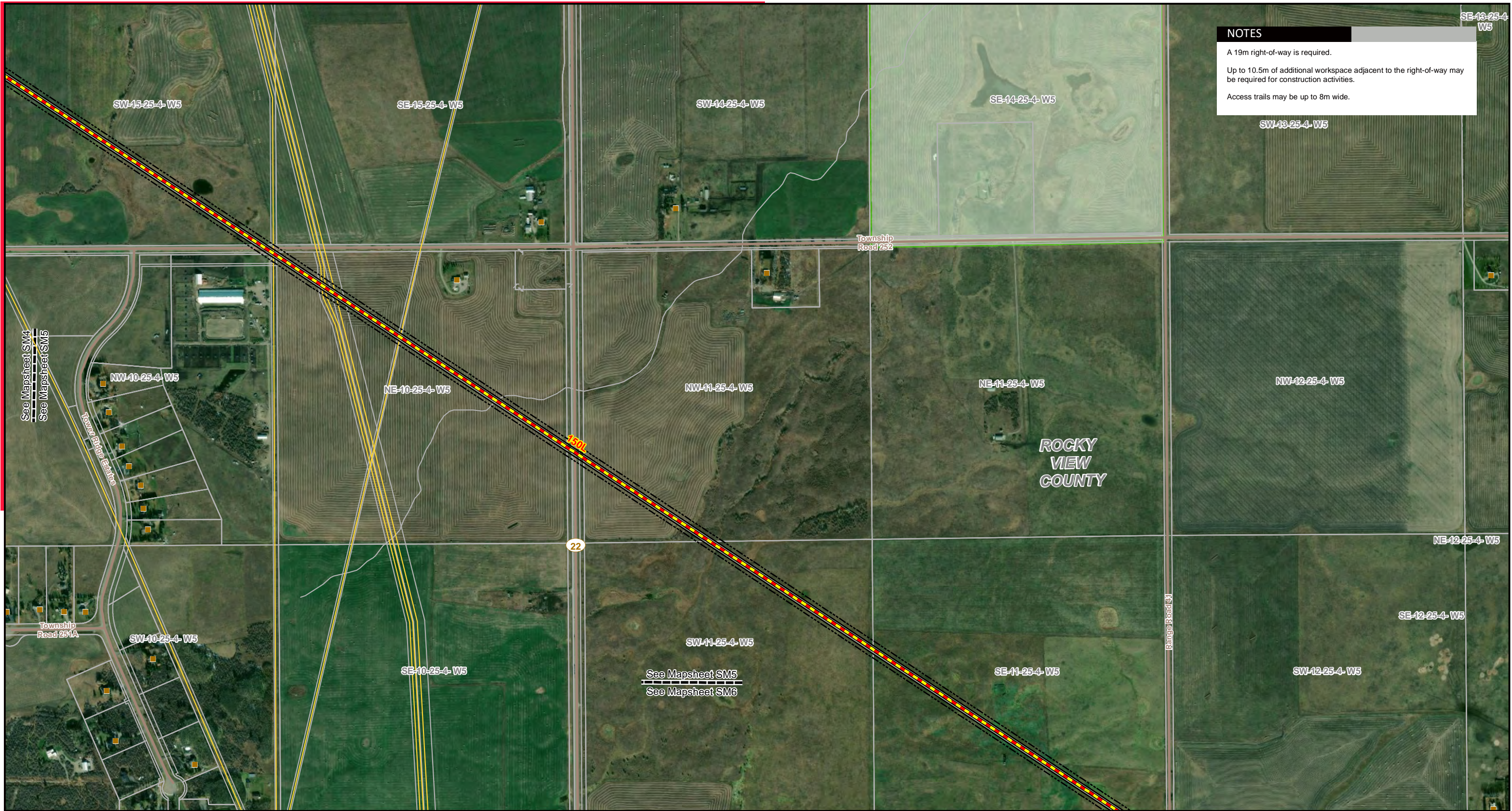
STRIP MOSAIC SM4



PROPOSED

150L Transmission Line Rebuild

*Service Layer Credits: Source: Esri, DigitalGlobe, GeoEye, Earthstar Geographics, CNES/Airbus DS, USDA, USGS, AeroGRID, IGN, and the GIS User Community
 Although there is no reason to believe that there are any errors associated with the data used to generate this product or in the product itself, users of these data are advised that errors in the data may be present.*



NOTES

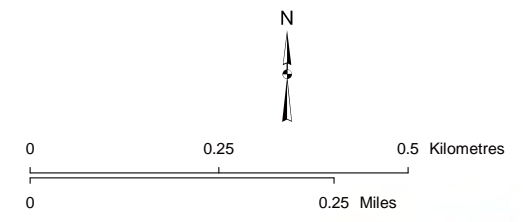
A 19m right-of-way is required.

Up to 10.5m of additional workspace adjacent to the right-of-way may be required for construction activities.

Access trails may be up to 8m wide.

LEGEND		
● Point Designation	Proposed Construction Workspace	Pipeline
● Rejected Point Designation	Proposed Guy Anchor	Railway
— Potential Transmission Line Relocation	Cemetery	River or Stream
— Proposed Transmission Line Rebuild	Day Care	Road
— Previously Considered Transmission Line	Residence	Airport
— Existing Transmission Line	School	Environmentally Significant Area
— Proposed Right of Way Boundary	Wellsite	First Nations Reserve
— Access Trail	Municipal or County Boundary	Urban Area
		Water Body

NO: 35026416 - 0025
 DRAWN: SG - AL
 FILE NO.: XXXXXXXX
 REVISION: 1.06.17
 AL FOLDER: 150L Transmission Line Rebuild
DATE: 2020-09-16

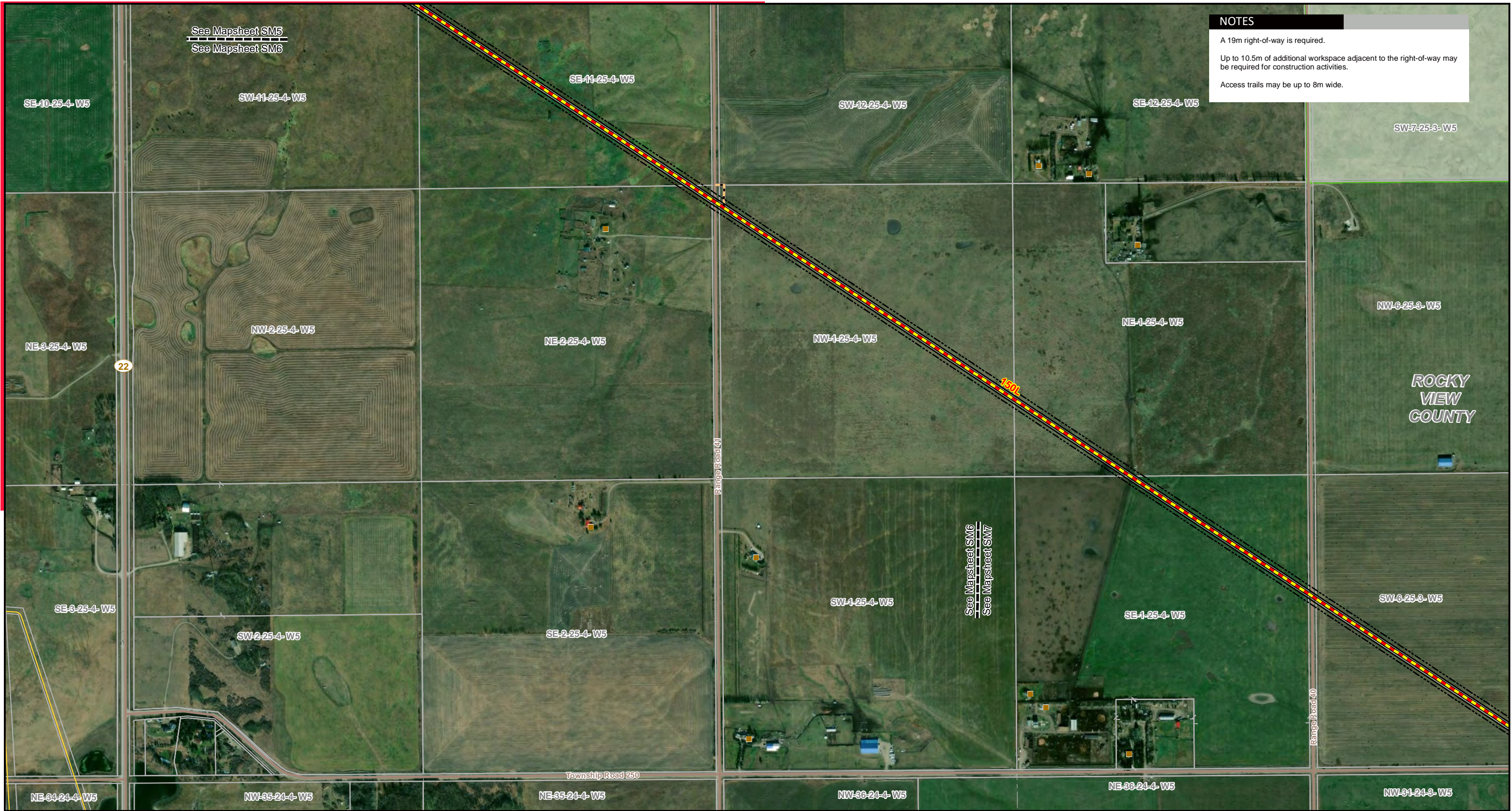


Service Layer Credits: Source: Esri, DigitalGlobe, GeoEye, Earthstar Geographics, CNES/Airbus DS, USDA, USGS, AeroGRID, IGN, and the GIS User Community
 Although there is no reason to believe that there are any errors associated with the data used to generate this product or in the product itself, users of these data are advised that errors in the data may be present.

STRIP MOSAIC SM5

PROPOSED

150L Transmission Line Rebuild



NOTES

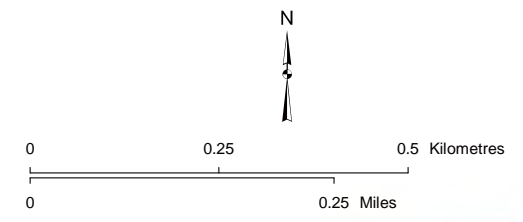
A 19m right-of-way is required.

Up to 10.5m of additional workspace adjacent to the right-of-way may be required for construction activities.

Access trails may be up to 8m wide.

LEGEND			
●	Point Designation	—	Pipeline
●	Rejected Point Designation	—	Railway
—	Potential Transmission Line Relocation	—	River or Stream
—	Proposed Transmission Line Rebuild	—	Road
—	Previously Considered Transmission Line	—	Airport
—	Existing Transmission Line	—	Environmentally Significant Area
—	Proposed Right of Way Boundary	—	First Nations Reserve
—	Access Trail	—	Urban Area
—	Proposed Construction Workspace	—	Water Body
—	Proposed Guy Anchor	—	
—	Cemetery	—	
—	Day Care	—	
—	Residence	—	
—	School	—	
—	Wellsite	—	
—	Municipal or County Boundary	—	

NO: 35026416 - 0025
 DRAWN: SG - AL
 FILE NO.: XXXXXXXX
 REVISION: 1.06.17
 AL FOLDER: 150L Transmission Line Rebuild
DATE: 2020-09-16

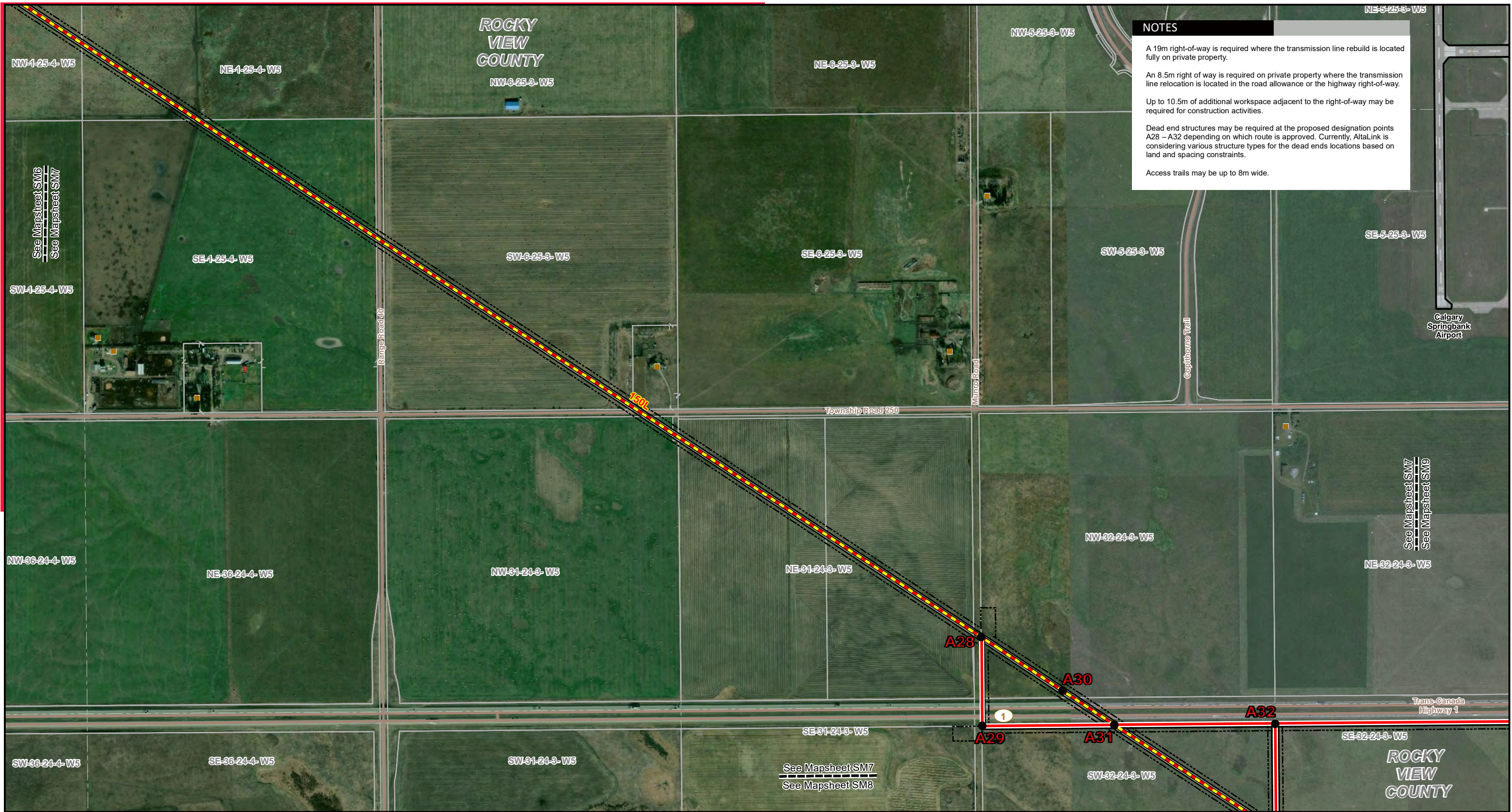


Service Layer Credits: Source: Esri, DigitalGlobe, GeoEye, Earthstar Geographics, CNES/Airbus DS, USDA, USGS, AeroGRID, IGN, and the GIS User Community
 Although there is no reason to believe that there are any errors associated with the data used to generate this product or in the product itself, users of these data are advised that errors in the data may be present.

STRIP MOSAIC SM6

PROPOSED

150L Transmission Line Rebuild



NOTES

A 19m right-of-way is required where the transmission line rebuild is located fully on private property.

An 8.5m right of way is required on private property where the transmission line relocation is located in the road allowance or the highway right-of-way.

Up to 10.5m of additional workspace adjacent to the right-of-way may be required for construction activities.

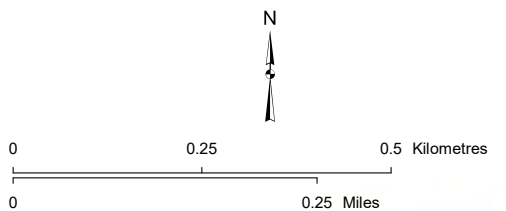
Dead end structures may be required at the proposed designation points A28 – A32 depending on which route is approved. Currently, AltaLink is considering various structure types for the dead ends locations based on land and spacing constraints.

Access trails may be up to 8m wide.

LEGEND		
● Point Designation	Proposed Construction Workspace	Pipeline
● Rejected Point Designation	Proposed Guy Anchor	Railway
— Potential Transmission Line Relocation	Cemetery	River or Stream
— Proposed Transmission Line Rebuild	Day Care	Road
— Previously Considered Transmission Line	Residence	Airport
— Existing Transmission Line	School	Environmentally Significant Area
— Proposed Right of Way Boundary	Wellsite	First Nations Reserve
— Access Trail	Municipal or County Boundary	Urban Area
		Water Body

NO: 35026416 - 0025
 DRAWN: SG - AL
 FILE NO.: XXXXXXXX
 REVISION: 1.06.17
 AL FOLDER: 150L Transmission Line Rebuild
DATE: 2020-09-16

*Service Layer Credits: Source: Esri, DigitalGlobe, GeoEye, Earthstar Geographics, CNES/Airbus DS, USDA, USGS, AeroGRID, IGN, and the GIS User Community
 Although there is no reason to believe that there are any errors associated with the data used to generate this product or in the product itself, users of these data are advised that errors in the data may be present.*



STRIP MOSAIC SM7

PROPOSED

150L Transmission Line Rebuild

See Mapsheet SM7
See Mapsheet SM8

SW-31-24-3-W5

NOTES

A 19m right-of-way is required where the transmission line rebuild is located fully on private property.

An 8.5m right of way is required on private property where the transmission line relocation is located in the road allowance or the highway right-of-way.

Up to 10.5m of additional workspace adjacent to the right-of-way may be required for construction activities.

Dead end structures may be required at the proposed designation points A33 – A35 depending on which route is approved. Currently, AltaLink is considering various structure types for the dead ends locations based on land and spacing constraints. A 5m x 25m right-of-way may be required behind the dead end structures for guy wires.

Access trails may be up to 8m wide.

SE-31-24-3-W5

SW-32-24-3-W5

SE-32-24-3-W5

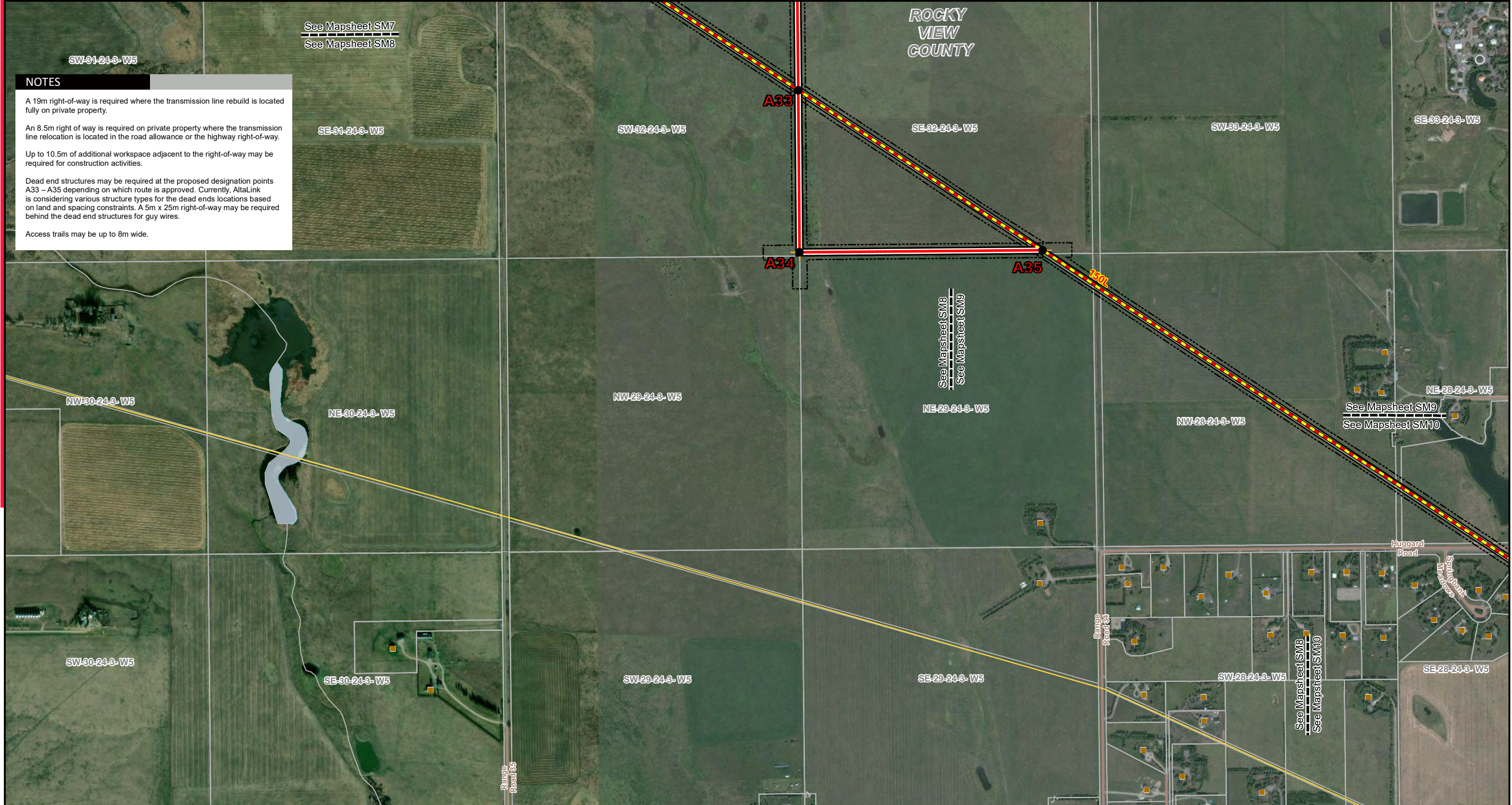
SW-33-24-3-W5

SE-33-24-3-W5

See Mapsheet SM8
See Mapsheet SM9

See Mapsheet SM9
See Mapsheet SM10

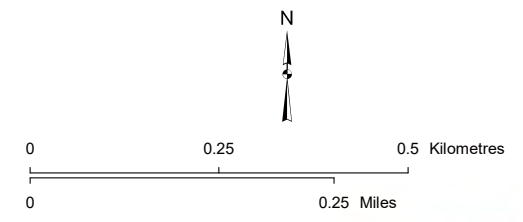
See Mapsheet SM8
See Mapsheet SM10



LEGEND

- Point Designation
- Rejected Point Designation
- Potential Transmission Line Relocation
- Proposed Transmission Line Rebuild
- Previously Considered Transmission Line
- Existing Transmission Line
- Proposed Right of Way Boundary
- Access Trail
- Proposed Construction Workspace
- Proposed Guy Anchor
- † Cemetery
- ⚡ Day Care
- Residence
- 🎓 School
- Wellsite
- Municipal or County Boundary
- Pipeline
- Railway
- River or Stream
- Road
- Airport
- Environmentally Significant Area
- First Nations Reserve
- Urban Area
- Water Body

NO: 35026416 - 0025
DRAWN: SG - AL
FILE NO.: XXXXXXX
REVISION: 1.06.17
AL FOLDER: 150L Transmission Line Rebuild
DATE: 2020-09-16



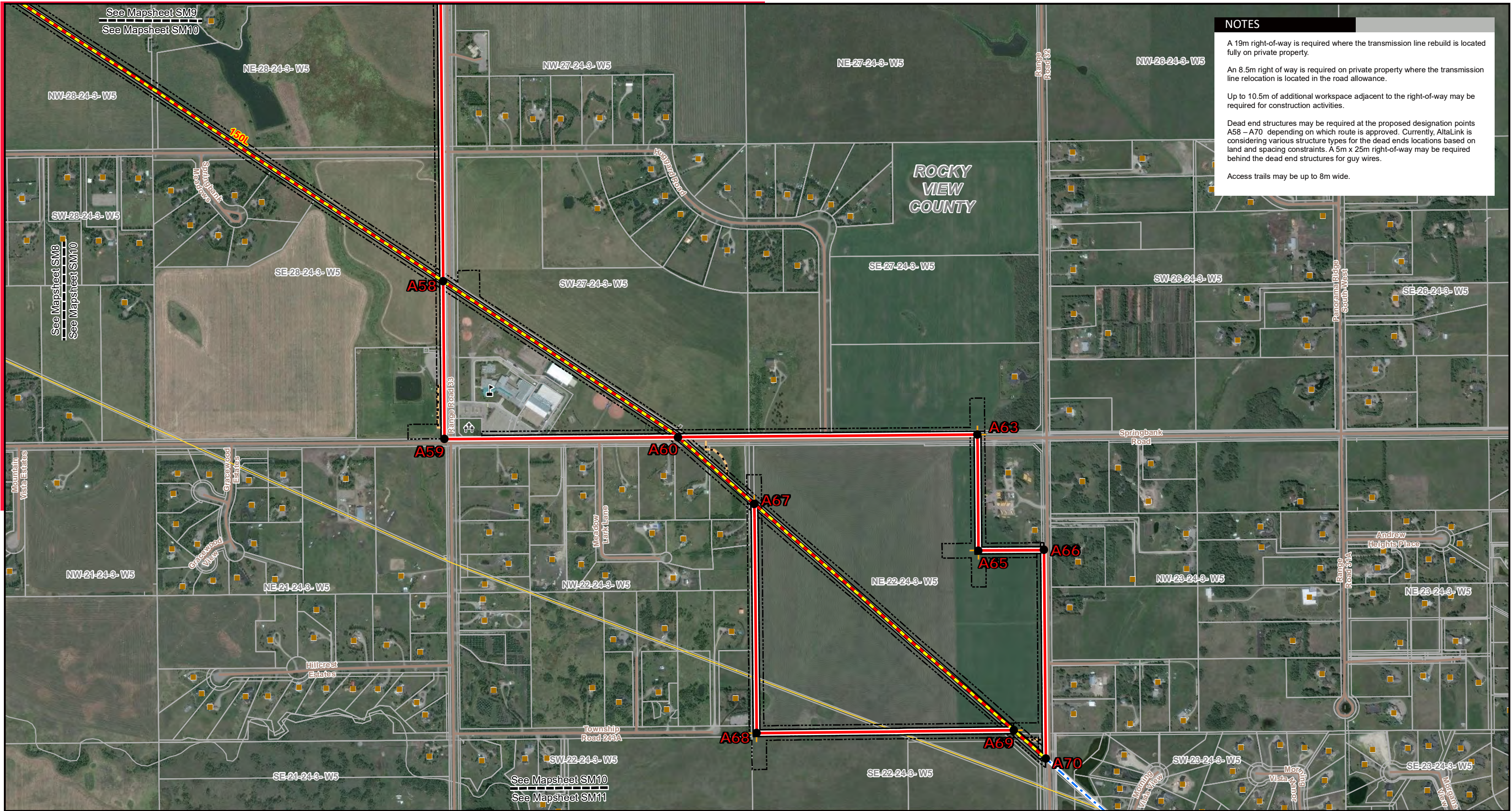
STRIP MOSAIC SM8



PROPOSED

150L Transmission Line Rebuild

*Service Layer Credits: Source: Esri, DigitalGlobe, GeoEye, Earthstar Geographics, CNES/Airbus DS, USDA, USGS, AeroGRID, IGN, and the GIS User Community
Although there is no reason to believe that there are any errors associated with the data used to generate this product or in the product itself, users of these data are advised that errors in the data may be present.*



NOTES

A 19m right-of-way is required where the transmission line rebuild is located fully on private property.

An 8.5m right of way is required on private property where the transmission line relocation is located in the road allowance.

Up to 10.5m of additional workspace adjacent to the right-of-way may be required for construction activities.

Dead end structures may be required at the proposed designation points A58 – A70 depending on which route is approved. Currently, AltaLink is considering various structure types for the dead ends locations based on land and spacing constraints. A 5m x 25m right-of-way may be required behind the dead end structures for guy wires.

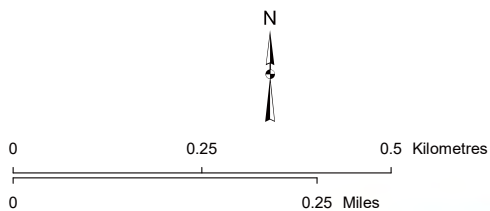
Access trails may be up to 8m wide.

LEGEND

● Point Designation	Proposed Construction Workspace	— Pipeline
● Rejected Point Designation	Proposed Guy Anchor	— Railway
— Potential Transmission Line Relocation	†† Cemetery	— River or Stream
— Proposed Transmission Line Rebuild	⚡ Day Care	— Road
— Previously Considered Transmission Line	🏠 Residence	✈ Airport
— Existing Transmission Line	🎓 School	🌿 Environmentally Significant Area
— Proposed Right of Way Boundary	⦿ Wellsite	🏡 First Nations Reserve
— Access Trail	— Municipal or County Boundary	🏠 Urban Area

NO: 35026416 - 0025
 DRAWN: SG - AL
 FILE NO.: XXXXXXXX
 REVISION: 1.06.17
 AL FOLDER: 150L Transmission Line Rebuild
DATE: 2020-09-16

*Service Layer Credits: Source: Esri, DigitalGlobe, GeoEye, Earthstar Geographics, CNES/Airbus DS, USDA, USGS, AeroGRID, IGN, and the GIS User Community
 Although there is no reason to believe that there are any errors associated with the data used to generate this product or in the product itself, users of these data are advised that errors in the data may be present.*



STRIP MOSAIC SM10

PROPOSED

150L Transmission Line Rebuild



NOTES

A 19m right-of-way is required.

Up to 10.5m of additional workspace adjacent to the right-of-way may be required for construction activities.

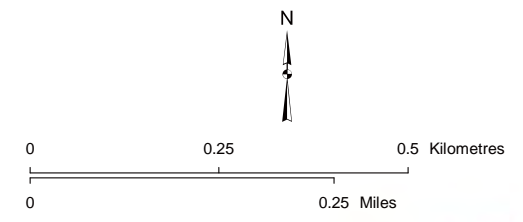
A dead end structure is required at A75. Currently, AltaLink is proposing an H-frame structure with guy wires.

Access trails may be up to 8m wide.

LEGEND

● Point Designation	Proposed Construction Workspace	Pipeline
● Rejected Point Designation	Proposed Guy Anchor	Railway
— Potential Transmission Line Relocation	Cemetery	River or Stream
— Proposed Transmission Line Rebuild	Day Care	Road
— Previously Considered Transmission Line	Residence	Airport
— Existing Transmission Line	School	Environmentally Significant Area
— Proposed Right of Way Boundary	Wellsite	First Nations Reserve
— Access Trail	Municipal or County Boundary	Urban Area
		Water Body

NO: 35026416 - 0025
 DRAWN: SG - AL
 FILE NO.: XXXXXXXX
 REVISION: 1.06.17
 AL FOLDER: 150L Transmission Line Rebuild
DATE: 2020-09-16



Service Layer Credits: Source: Esri, DigitalGlobe, GeoEye, Earthstar Geographics, CNES/Airbus DS, USDA, USGS, AeroGRID, IGN, and the GIS User Community
 Although there is no reason to believe that there are any errors associated with the data used to generate this product or in the product itself, users of these data are advised that errors in the data may be present.

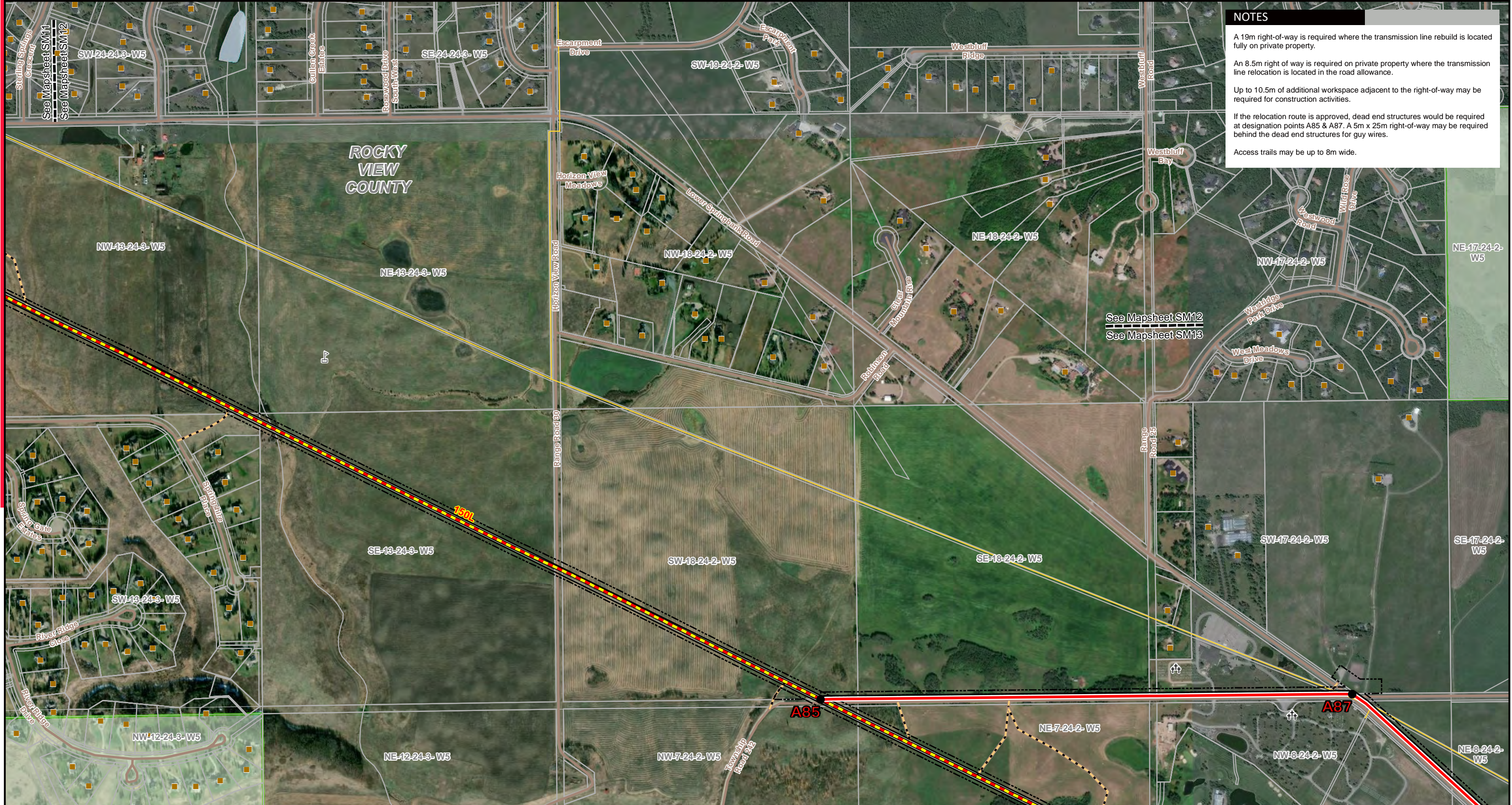
STRIP MOSAIC SM11

PROPOSED

150L Transmission Line Rebuild

See Mapsheet SM10
 See Mapsheet SM11

See Mapsheet SM11
 See Mapsheet SM12



NOTES

A 19m right-of-way is required where the transmission line rebuild is located fully on private property.

An 8.5m right of way is required on private property where the transmission line relocation is located in the road allowance.

Up to 10.5m of additional workspace adjacent to the right-of-way may be required for construction activities.

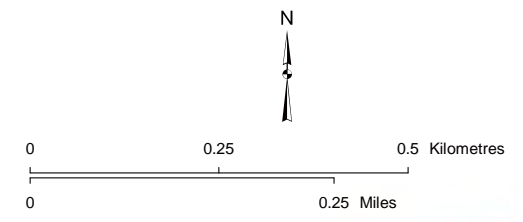
If the relocation route is approved, dead end structures would be required at designation points A85 & A87. A 5m x 25m right-of-way may be required behind the dead end structures for guy wires.

Access trails may be up to 8m wide.

LEGEND

● Point Designation	Proposed Construction Workspace	Pipeline	Water Body
● Rejected Point Designation	Proposed Guy Anchor	Railway	
— Potential Transmission Line Relocation	†† Cemetery	River or Stream	
— Proposed Transmission Line Rebuild	† Day Care	Road	
— Previously Considered Transmission Line	■ Residence	Airport	
— Existing Transmission Line	🎓 School	Environmentally Significant Area	
— Proposed Right of Way Boundary	● Wellsite	First Nations Reserve	
— Access Trail	— Municipal or County Boundary	Urban Area	

NO: 35026416 - 0025
 DRAWN: SG - AL
 FILE NO.: XXXXXXXX
 REVISION: 1.06.17
 AL FOLDER: 150L Transmission Line Rebuild
DATE: 2020-09-16

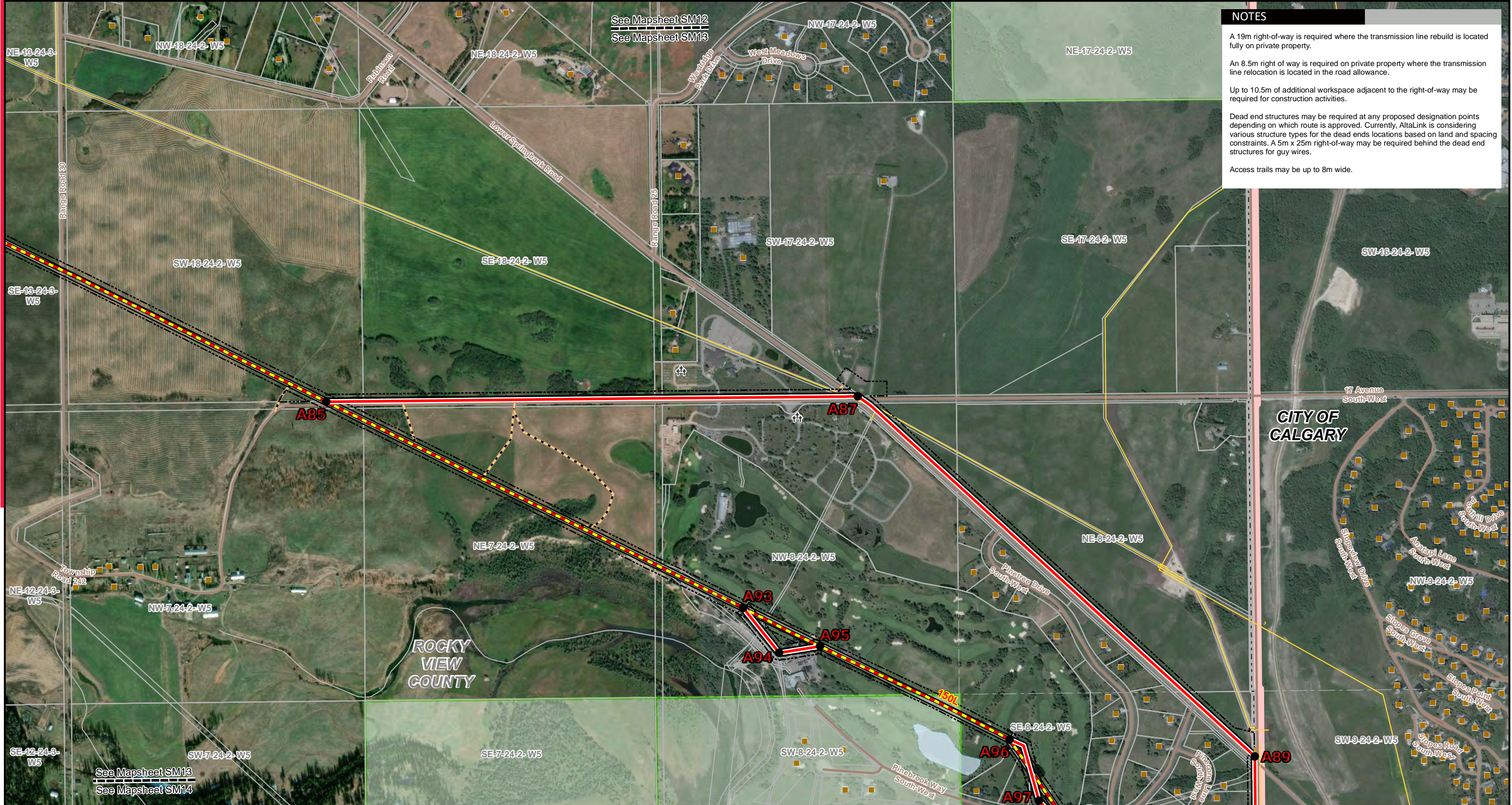


STRIP MOSAIC SM12

PROPOSED

150L Transmission Line Rebuild

Service Layer Credits: Source: Esri, DigitalGlobe, GeoEye, Earthstar Geographics, CNES/Airbus DS, USDA, USGS, AeroGRID, IGN, and the GIS User Community
 Although there is no reason to believe that there are any errors associated with the data used to generate this product or in the product itself, users of these data are advised that errors in the data may be present.



NOTES

A 19m right-of-way is required where the transmission line rebuild is located fully on private property.

An 8.5m right of way is required on private property where the transmission line relocation is located in the road allowance.

Up to 10.5m of additional workspace adjacent to the right-of-way may be required for construction activities.

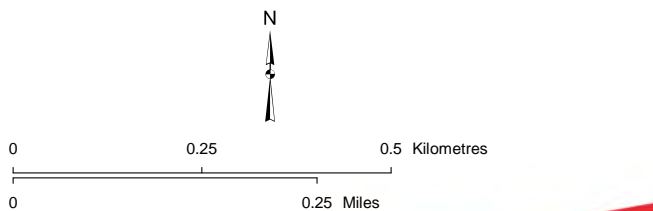
Dead end structures may be required at any proposed designation points depending on which route is approved. Currently, AltaLink is considering various structure types for the dead ends locations based on land and spacing constraints. A 5m x 25m right-of-way may be required behind the dead end structures for guy wires.

Access trails may be up to 8m wide.

LEGEND			
●	Point Designation	—	Pipeline
●	Rejected Point Designation	—	Railway
—	Potential Transmission Line Relocation	—	River or Stream
—	Proposed Transmission Line Rebuild	—	Road
—	Previously Considered Transmission Line	—	Airport
—	Existing Transmission Line	—	Environmentally Significant Area
—	Proposed Right of Way Boundary	—	First Nations Reserve
—	Access Trail	—	Urban Area
—	Proposed Construction Workspace	—	Water Body
—	Proposed Guy Anchor	—	
—	Cemetery	—	
—	Day Care	—	
—	Residence	—	
—	School	—	
—	Wellsite	—	
—	Municipal or County Boundary	—	

NO: 35026416 - 0025
 DRAWN: SG - AL
 FILE NO.: XXXXXXXX
 REVISION: 1.06.17
 AL FOLDER: 150L Transmission Line Rebuild
DATE: 2020-09-16

*Service Layer Credits: Source: Esri, DigitalGlobe, GeoEye, Earthstar Geographics, CNES/Airbus DS, USDA, USGS, AeroGRID, IGN, and the GIS User Community
 Although there is no reason to believe that there are any errors associated with the data used to generate this product or in the product itself, users of these data are advised that errors in the data may be present.*



STRIP MOSAIC SM13

PROPOSED
 150L Transmission Line Rebuild



NOTES

If the transmission line rebuild is approved, the rebuild will begin at designation point A99 and continue northward. Existing structures south of A99 will not be rebuilt at this time.

If the transmission line relocation is approved in the road allowance, the existing 150L line will be salvaged north of designation point A101.

A 19m right-of-way is required where the transmission line rebuild is located fully on private property.

An 8.5m right of way is required on private property where the transmission line relocation is located in the road allowance.

Up to 10.5m of additional workspace adjacent to the right-of-way may be required for construction activities.

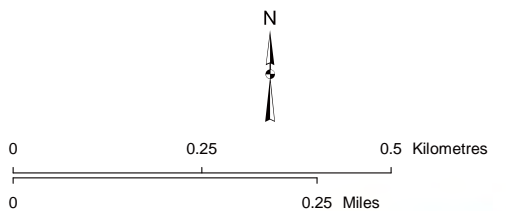
Dead end structures may be required at any of the proposed designation points depending on which route is approved. Currently, AltaLink is considering various structure types for the dead ends locations based on land and spacing constraints. A 5m x 25m right-of-way may be required behind the dead end structures for guy wires.

Access trails may be up to 8m wide.

LEGEND		
● Point Designation	Proposed Construction Workspace	Pipeline
● Rejected Point Designation	Proposed Guy Anchor	Railway
— Potential Transmission Line Relocation	Cemetery	River or Stream
— Proposed Transmission Line Rebuild	Day Care	Road
— Previously Considered Transmission Line	Residence	Airport
— Existing Transmission Line	School	Environmentally Significant Area
— Proposed Right of Way Boundary	Wellsite	First Nations Reserve
— Access Trail	Municipal or County Boundary	Urban Area

NO: 35026416 - 0025
 DRAWN: SG - AL
 FILE NO.: XXXXXXXX
 REVISION: 1.06.17
 AL FOLDER: 150L Transmission Line Rebuild
DATE: 2020-09-16

Service Layer Credits: Source: Esri, DigitalGlobe, GeoEye, Earthstar Geographics, CNES/Airbus DS, USDA, USGS, AeroGRID, IGN, and the GIS User Community
 Although there is no reason to believe that there are any errors associated with the data used to generate this product or in the product itself, users of these data are advised that errors in the data may be present.



STRIP MOSAIC SM14

PROPOSED
 150L Transmission Line Rebuild