

LEGEND

- Proposed Structure Replacement
- Existing Substation
- Existing Transmission Line
- Map Sheet
- Hamlet or Locality
- Residence
- Railway
- Road
- Other Protected Area
- Urban Area
- Water Body

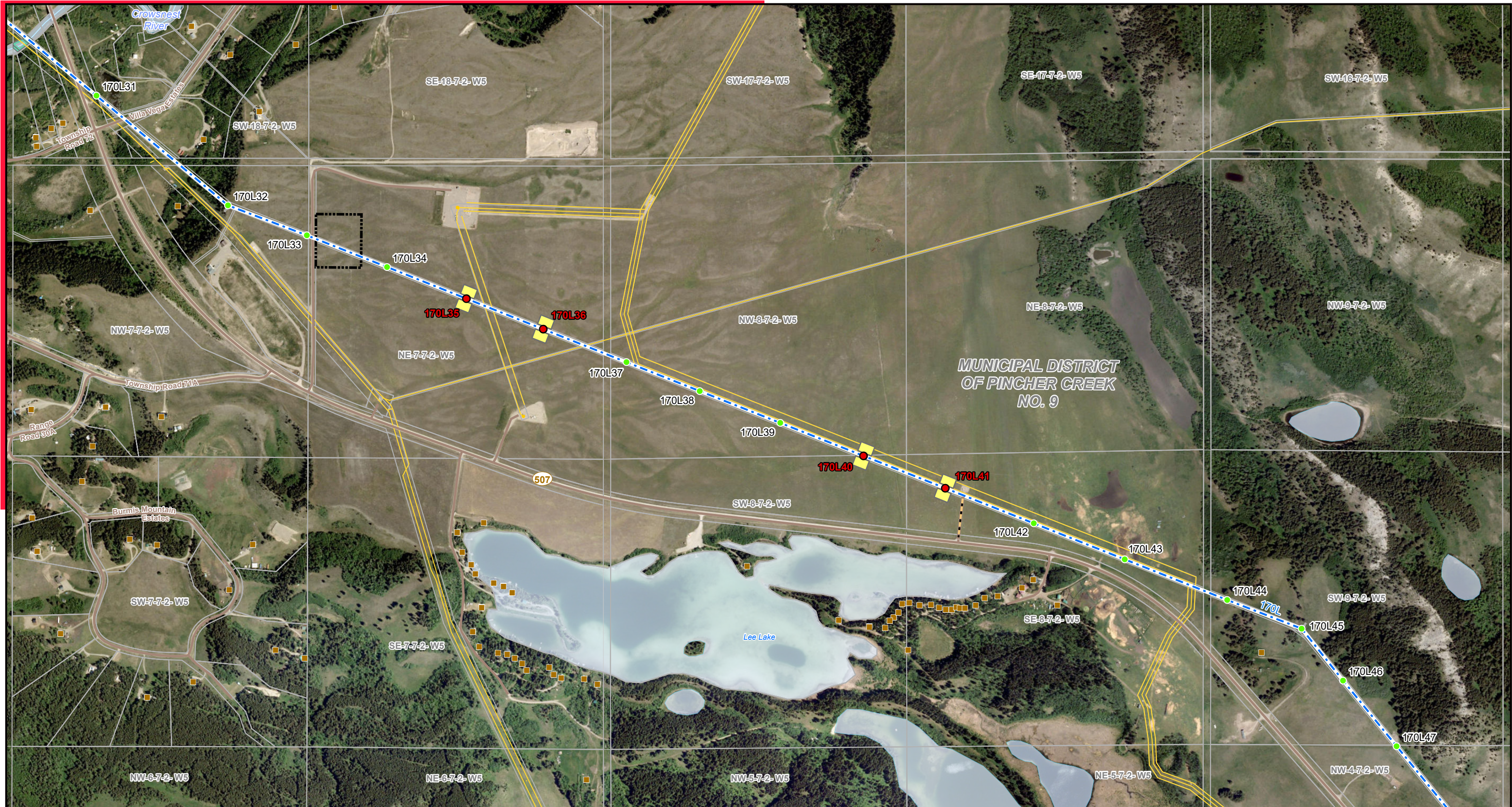
NO: 35040546
 DRAWN: SG - AL
 FILE NO.: XXXXXXXX
 REVISION: 0.00.02
 AL FOLDER: 170L Transmission Line Structure Replacements
DATE: 2026-06-08

STRIP INDEX **SI**

ALTALINK.

PROPOSED
 170L Transmission Line
 Structure Replacements

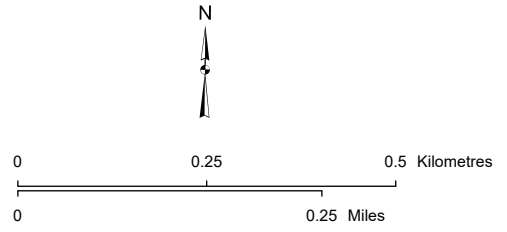
Although there is no reason to believe that there are any errors associated with the data used to generate this product or in the product itself, users of these data are advised that errors in the data may be present.



LEGEND

- Proposed Structure Replacement
- Existing Structure
- Existing Transmission Line
- Access Trail
- Construction Workspace
- Laydown Yard
- Residence
- Wellsite
- Pipeline
- River or Stream
- Road
- Crown Land
- Water Body

NO: 35037290 - 0025
 DRAWN: SG - AL
 FILE NO.: XXXXXXX
 REVISION: 0.00.02
 AL FOLDER: 170L Transmission Line
 Structure Replacements
DATE: 2026-06-08

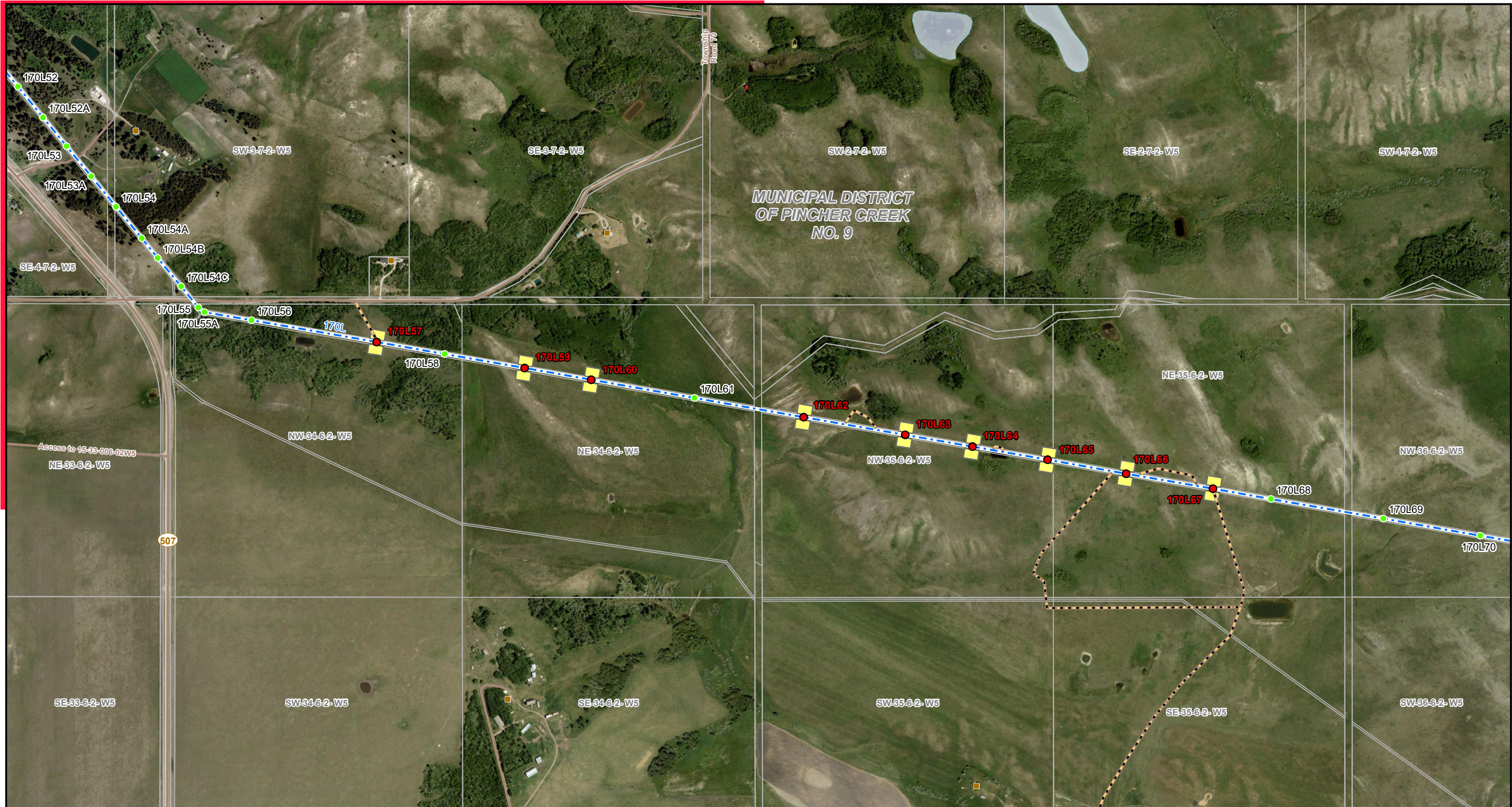


*Service Layer Credits: Source: Esri, Vantor, Earthstar Geographics, and the GIS User Community
 Although there is no reason to believe that there are any errors associated with the data used to generate this product or in the product itself, users of these data are advised that errors in the data may be present.*

STRIP MOSAIC SM1



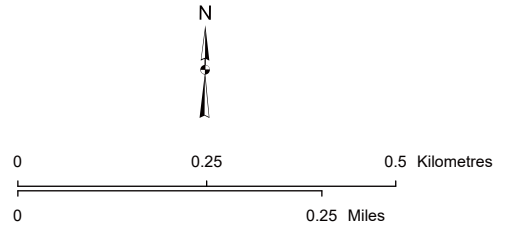
PROPOSED
170L Transmission Line
Structure Replacements



LEGEND

- Proposed Structure Replacement
- Existing Structure
- Existing Transmission Line
- Access Trail
- Construction Workspace
- ▭ Laydown Yard
- Residence
- Wellsite
- Pipeline
- River or Stream
- Road
- ▭ Crown Land
- ▭ Water Body

NO: 35037290 - 0025
 DRAWN: SG - AL
 FILE NO.: XXXXXXX
 REVISION: 0.00.02
 AL FOLDER: 170L Transmission Line
 Structure Replacements
DATE: 2026-06-08



STRIP MOSAIC **SM2**



PROPOSED
 170L Transmission Line
 Structure Replacements

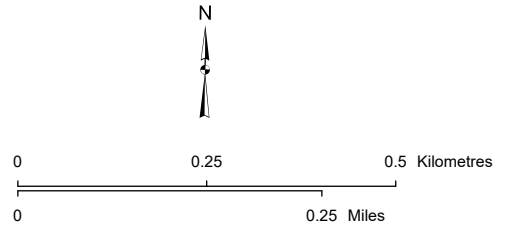
*Service Layer Credits: Source: Esri, Vantor, Earthstar Geographics, and the GIS User Community
 Although there is no reason to believe that there are any errors associated with the data used to generate this product or in the product itself, users of these data are advised that errors in the data may be present.*



LEGEND

- Proposed Structure Replacement
- Existing Structure
- Existing Transmission Line
- Access Trail
- Construction Workspace
- Laydown Yard
- Residence
- Wellsite
- Pipeline
- River or Stream
- Road
- Crown Land
- Water Body

NO: 35037290 - 0025
 DRAWN: SG - AL
 FILE NO.: XXXXXXX
 REVISION: 0.00.02
 AL FOLDER: 170L Transmission Line
 Structure Replacements
DATE: 2026-06-08

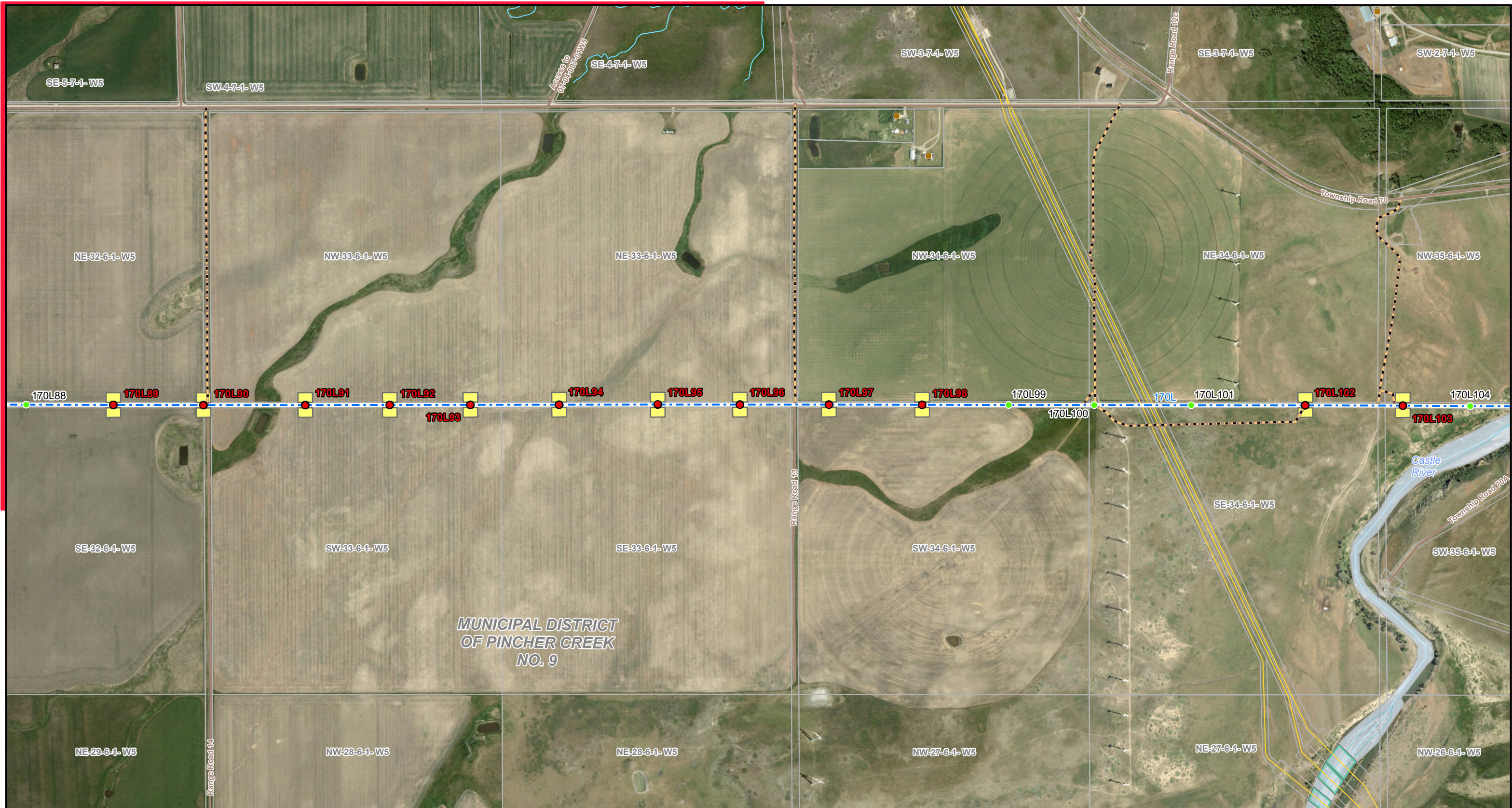


*Service Layer Credits: Source: Esri, Vantor, Earthstar Geographics, and the GIS User Community
 Although there is no reason to believe that there are any errors associated with the data used to generate this product or in the product itself, users of these data are advised that errors in the data may be present.*

STRIP MOSAIC **SM3**



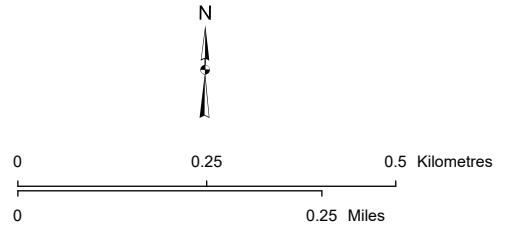
PROPOSED
 170L Transmission Line
 Structure Replacements



LEGEND

- Proposed Structure Replacement
- Existing Structure
- Existing Transmission Line
- Access Trail
- Construction Workspace
- Laydown Yard
- Residence
- Wellsite
- Pipeline
- River or Stream
- Road
- Crown Land
- Water Body

NO: 35037290 - 0025
 DRAWN: SG - AL
 FILE NO.: XXXXXXXX
 REVISION: 0.00.02
 AL FOLDER: 170L Transmission Line
 Structure Replacements
DATE: 2026-06-08



*Service Layer Credits: Source: Esri, Vantor, Earthstar Geographics, and the GIS User Community
 Although there is no reason to believe that there are any errors associated with the data used to generate this product or in the product itself, users of these data are advised that errors in the data may be present.*

STRIP MOSAIC **SM4**



PROPOSED
 170L Transmission Line
 Structure Replacements