

LEGEND

- Point Designation
- Residence
- Existing Substation
- Municipal or County Boundary
- Potential Transmission Line Route
- Potential Salvage of Existing Transmission Line
- Existing Transmission Line
- Map Sheet
- Hamlet or Locality
- Railway
- Road
- Urban Area
- Water Body

NO: 35029726 - 0025
 DRAWN: SG - AL
 FILE NO.: XXXXXXX
 REVISION: 0.03.11
 AL FOLDER: 757L South Transmission Line Relocation
DATE: 2021-04-20

0 1 2 Kilometres
 0 0.5 1 Miles

Although there is no reason to believe that there are any errors associated with the data used to generate this product or in the product itself, users of these data are advised that errors in the data may be present.

STRIP INDEX **SI**

ALTALINK
 A BERKSHIRE HATHAWAY ENERGY COMPANY

POTENTIAL

757L South Transmission Line Relocation



NOTES

AltaLink is proposing to relocate the 10km portion of the 757L transmission line between the Benalto 17S substation and the connection to the 758L transmission line at Township Road 392. The line will be constructed similar to the existing line. Wooden monopoles are proposed to be located 1m within the county road allowances.

A 10m right-of-way on private property adjacent to the road allowance is proposed to provide access for construction, maintenance, and vegetation control. Additional right-of-way may be required where special structures and guy wires are located. Additional construction workspace may be required for the safe construction and salvage of the lines. These will include additional workspace for 30x40m turnarounds, and 30x80m stringing workspaces. Site specific land features and construction requirements may require different measurements from the standard right-of-way and workspaces provided above. Landowners will be advised of the right-of-way and construction workspaces required on their lands.

Access trails may be requested where access along the road allowances is difficult, or, for the use of existing approaches off the county roads.

Two potential relocation options have been identified. One route from A0 to A40 following the western side of Range Road 30. And an option A0-A10-B15-B30-A40 that routes east of Benalto following the eastern side of Range Road 25.

Portions of the existing 757L alignment, shown as salvage, may be taken over by Fortis.

At the Benalto 17S Substation the short 819L connection between 637L and 757L will be reconnected to the relocated 757L line at A1.

LEGEND

● Point Designation	● Hamlet or Locality	Environmentally Significant Area
■ Existing Substation	■ Residence	Oil and Gas Plant
— Potential Transmission Line Route	■ School	Other Industrial Site
— Potential Salvage of Existing Transmission Line	● Wellsite	Urban Area
— Existing Transmission Line	— Municipal or County Boundary	Water Body
— Proposed Right of Way Boundary	— Pipeline	
■ Construction Workspace	— Railway	
† Cemetery	— Road	

NO: 35029726 - 0025
 DRAWN: SG-AL
 FILE NO.: XXXXXXXX
 REVISION: 0.03.11
 AL FOLDER: 757L South Transmission Line Relocation
DATE: 2021-04-20

0 0.25 0.5 Kilometres
 0 0.25 Miles

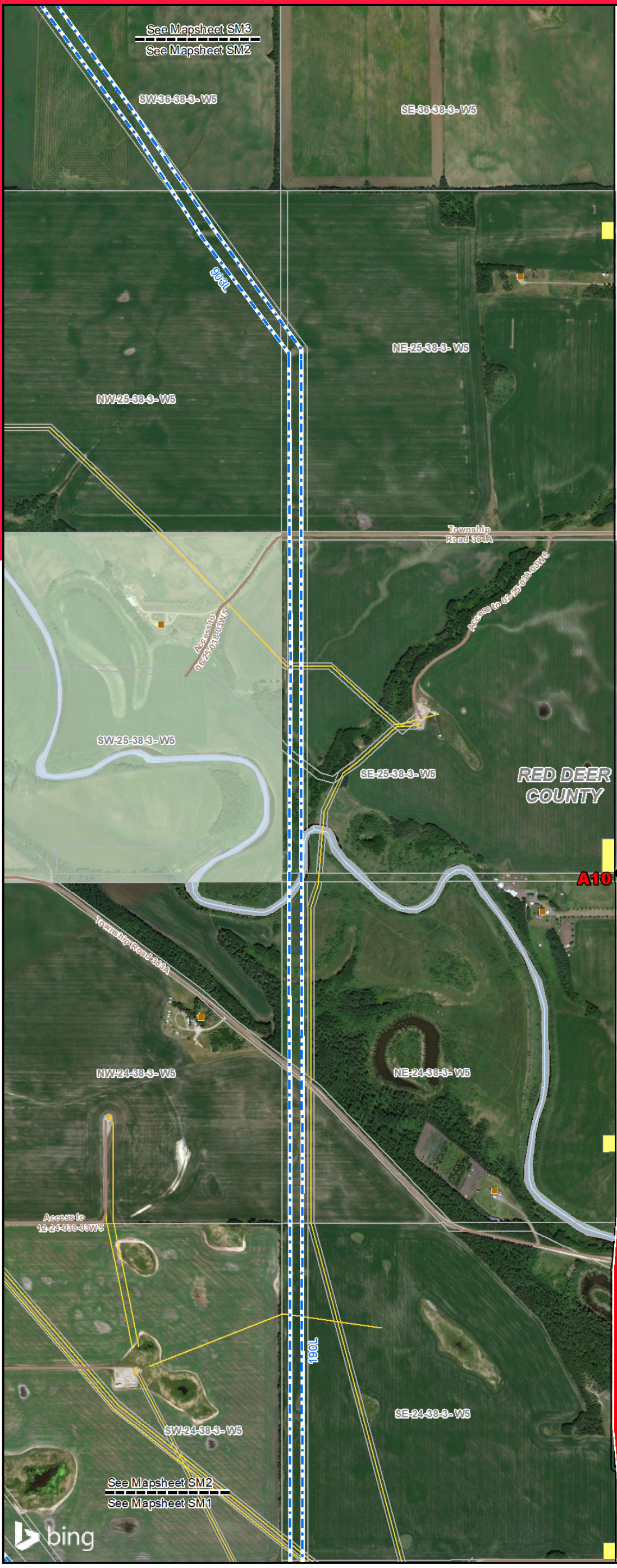
STRIP MOSAIC SM1

ALTALINK
 A BERKSHIRE HATHAWAY ENERGY COMPANY

POTENTIAL

757L South Transmission Line Relocation

Service Layer Credits: © 2021 Microsoft Corporation © 2021 Maxar ©CNES (2021) Distribution Airbus DS
 Although there is no reason to believe that there are any errors associated with the data used to generate this product or in the product itself, users of these data are advised that errors in the data may be present.



NOTES

AltaLink is proposing to relocate the 10km portion of the 757L transmission line between the Benalto 17S substation and the connection to the 758L transmission line at Township Road 392. The line will be constructed similar to the existing line. Wooden monopoles are proposed to be located 1m within the county road allowances.

A 10m right-of-way on private property adjacent to the road allowance is proposed to provide access for construction, maintenance, and vegetation control. Additional right-of-way may be required where special structures and guy wires are located. Additional construction workspace may be required for the safe construction and salvage of the lines. These will include additional workspace for 30x40m turnarounds, and 30x80m stringing workspaces. Site specific land features and construction requirements may require different measurements from the standard right-of-way and workspaces provided above. Landowners will be advised of the right-of-way and construction workspaces required on their lands.

Access trails may be requested where access along the road allowances is difficult, or, for the use of existing approaches off the county roads.

Two potential relocation options have been identified. One route from A0 to A40 following the western side of Range Road 30. And an option A0-A10-B15-B30-A40 that routes east of Benalto following the eastern side of Range Road 25.

Portions of the existing 757L alignment, shown as salvage, may be taken over by Fortis.

LEGEND

● Point Designation	● Hamlet or Locality	Environmentally Significant Area
■ Existing Substation	■ Residence	Oil and Gas Plant
— Potential Transmission Line Route	■ School	Other Industrial Site
— Potential Salvage of Existing Transmission Line	● Wellsite	Urban Area
— Existing Transmission Line	— Municipal or County Boundary	Water Body
— Proposed Right of Way Boundary	— Pipeline	
■ Construction Workspace	— Railway	
† Cemetery	— Road	

NO: 35029726 - 0025
 DRAWN: SG-AL
 FILE NO.: XXXXXXXX
 REVISION: 0.03.11
 AL FOLDER: 757L South Transmission Line Relocation
DATE: 2021-04-20

0 0.25 0.5 Kilometres
 0 0.25 Miles

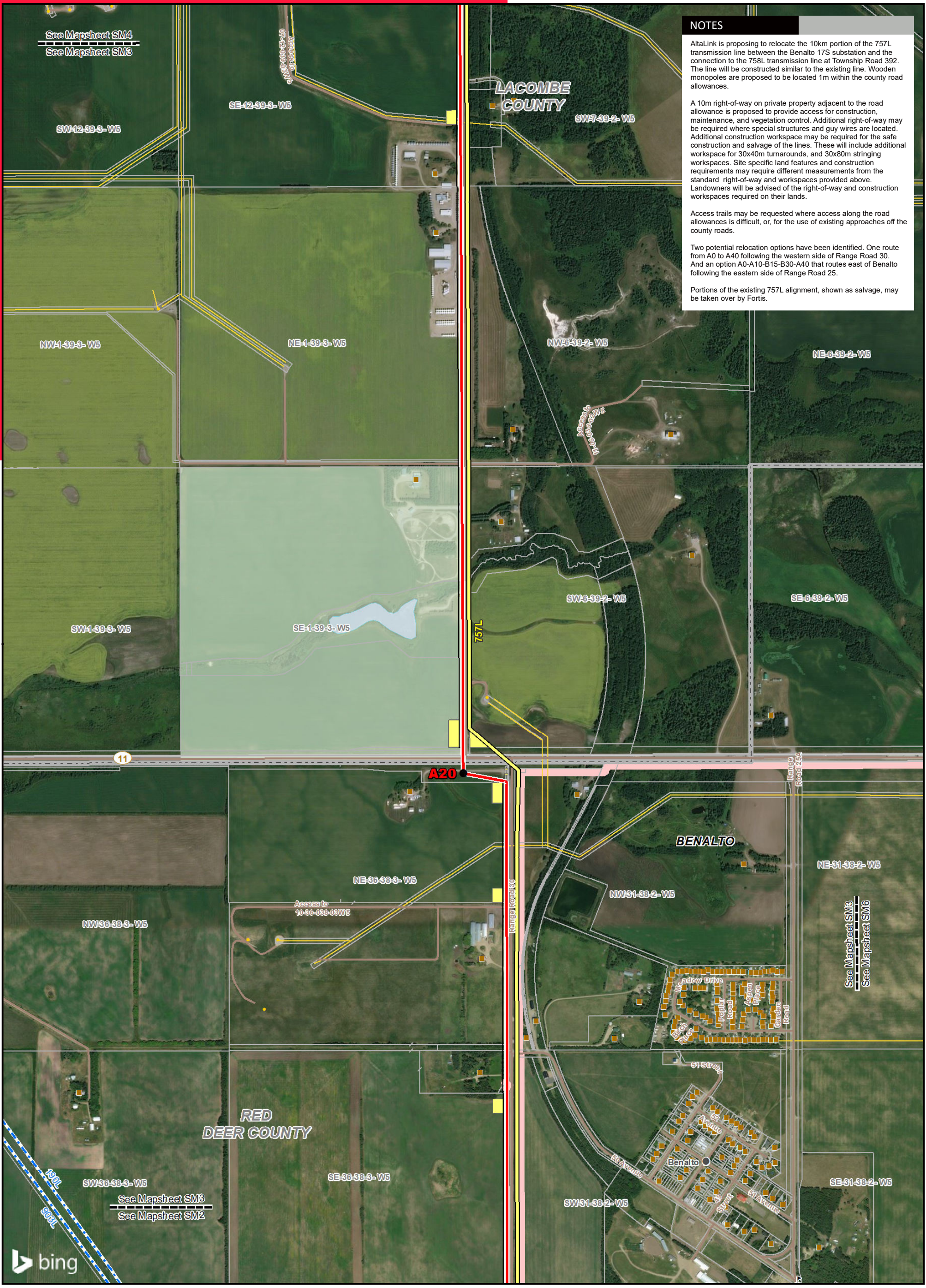
STRIP MOSAIC SM2

ALTALINK
 A BERKSHIRE HATHAWAY ENERGY COMPANY

POTENTIAL

757L South Transmission Line Relocation

Service Layer Credits: © 2021 Microsoft Corporation © 2021 Maxar ©CNES (2021) Distribution Airbus DS
 Although there is no reason to believe that there are any errors associated with the data used to generate this product or in the product itself, users of these data are advised that errors in the data may be present.



NOTES

AltaLink is proposing to relocate the 10km portion of the 757L transmission line between the Benalto 17S substation and the connection to the 758L transmission line at Township Road 392. The line will be constructed similar to the existing line. Wooden monopoles are proposed to be located 1m within the county road allowances.

A 10m right-of-way on private property adjacent to the road allowance is proposed to provide access for construction, maintenance, and vegetation control. Additional right-of-way may be required where special structures and guy wires are located. Additional construction workspace may be required for the safe construction and salvage of the lines. These will include additional workspace for 30x40m turnarounds, and 30x80m stringing workspaces. Site specific land features and construction requirements may require different measurements from the standard right-of-way and workspaces provided above. Landowners will be advised of the right-of-way and construction workspaces required on their lands.

Access trails may be requested where access along the road allowances is difficult, or, for the use of existing approaches off the county roads.

Two potential relocation options have been identified. One route from A0 to A40 following the western side of Range Road 30. And an option A0-A10-B15-B30-A40 that routes east of Benalto following the eastern side of Range Road 25.

Portions of the existing 757L alignment, shown as salvage, may be taken over by Fortis.

LEGEND

● Point Designation	● Hamlet or Locality	Environmentally Significant Area
■ Existing Substation	■ Residence	Oil and Gas Plant
— Potential Transmission Line Route	⚡ School	Other Industrial Site
— Potential Salvage of Existing Transmission Line	● Wellsite	Urban Area
— Existing Transmission Line	— Municipal or County Boundary	Water Body
— Proposed Right of Way Boundary	— Pipeline	
■ Construction Workspace	— Railway	
† Cemetery	— Road	

NO: 35029726 - 0025
 DRAWN: SG-AL
 FILE NO.: XXXXXXXX
 REVISION: 0.03.11
 AL FOLDER: 757L South Transmission Line Relocation
DATE: 2021-04-20

0 0.25 0.5 Kilometres
 0 0.25 Miles

STRIP MOSAIC SM3

ALTALINK
 A BERKSHIRE HATHAWAY ENERGY COMPANY

POTENTIAL

757L South Transmission Line Relocation

Service Layer Credits: © 2021 Microsoft Corporation © 2021 Maxar ©CNES (2021) Distribution Airbus DS
 Although there is no reason to believe that there are any errors associated with the data used to generate this product or in the product itself, users of these data are advised that errors in the data may be present.



NOTES

AltaLink is proposing to relocate the 10km portion of the 757L transmission line between the Benalto 17S substation and the connection to the 758L transmission line at Township Road 392. The line will be constructed similar to the existing line. Wooden monopoles are proposed to be located 1m within the county road allowances.

A 10m right-of-way on private property adjacent to the road allowance is proposed to provide access for construction, maintenance, and vegetation control. Additional right-of-way may be required where special structures and guy wires are located. Additional construction workspace may be required for the safe construction and salvage of the lines. These will include additional workspace for 30x40m turnarounds, and 30x80m stringing workspaces. Site specific land features and construction requirements may require different measurements from the standard right-of-way and workspaces provided above. Landowners will be advised of the right-of-way and construction workspaces required on their lands.

Access trails may be requested where access along the road allowances is difficult, or, for the use of existing approaches off the county roads.

Two potential relocation options have been identified. One route from A0 to A40 following the western side of Range Road 30. And an option A0-A10-B15-B30-A40 that routes east of Benalto following the eastern side of Range Road 25.

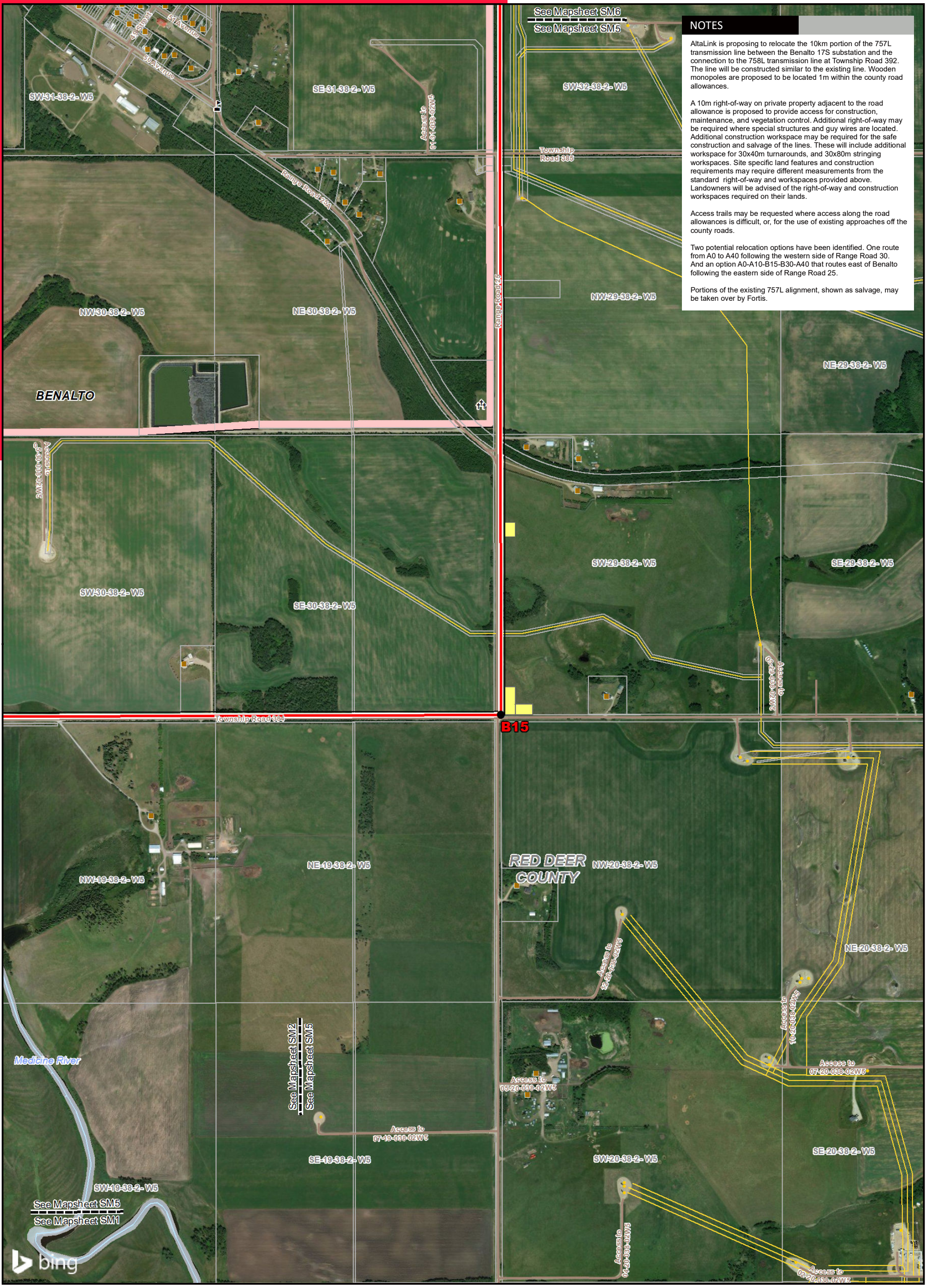
Portions of the existing 757L alignment, shown as salvage, may be taken over by Fortis.

A temporary line will be required between A35 and B45 to bypass the tap connection to the 758L transmission line. The location of the temporary line will be discussed with affected landowners.

LEGEND		NO: 35029726 - 0025 DRAWN: SG-AL FILE NO.: XXXXXXXX REVISION: 0.03.11 AL FOLDER: 757L South Transmission Line Relocation DATE: 2021-04-20			STRIP MOSAIC SM4 A BERKSHIRE HATHAWAY ENERGY COMPANY
<ul style="list-style-type: none"> ● Point Designation ■ Existing Substation — Potential Transmission Line Route — Potential Salvage of Existing Transmission Line --- Existing Transmission Line — Proposed Right of Way Boundary ■ Construction Workspace † Cemetery 	<ul style="list-style-type: none"> ● Hamlet or Locality ■ Residence ▲ School ● Wellsite — Municipal or County Boundary — Pipeline — Railway — Road 	<ul style="list-style-type: none"> ■ Environmentally Significant Area ■ Oil and Gas Plant ■ Other Industrial Site ■ Urban Area ■ Water Body 			

Service Layer Credits: © 2021 Microsoft Corporation © 2021 Maxar ©CNES (2021) Distribution Airbus DS
 Although there is no reason to believe that there are any errors associated with the data used to generate this product or in the product itself, users of these data are advised that errors in the data may be present.

POTENTIAL
 757L South Transmission Line Relocation



NOTES

AltaLink is proposing to relocate the 10km portion of the 757L transmission line between the Benalto 17S substation and the connection to the 758L transmission line at Township Road 392. The line will be constructed similar to the existing line. Wooden monopoles are proposed to be located 1m within the county road allowances.

A 10m right-of-way on private property adjacent to the road allowance is proposed to provide access for construction, maintenance, and vegetation control. Additional right-of-way may be required where special structures and guy wires are located. Additional construction workspace may be required for the safe construction and salvage of the lines. These will include additional workspace for 30x40m turnarounds, and 30x80m stringing workspaces. Site specific land features and construction requirements may require different measurements from the standard right-of-way and workspaces provided above. Landowners will be advised of the right-of-way and construction workspaces required on their lands.

Access trails may be requested where access along the road allowance is difficult, or, for the use of existing approaches off the county roads.

Two potential relocation options have been identified. One route from A0 to A40 following the western side of Range Road 30. And an option A0-A10-B15-B30-A40 that routes east of Benalto following the eastern side of Range Road 25.

Portions of the existing 757L alignment, shown as salvage, may be taken over by Fortis.

LEGEND

● Point Designation	● Hamlet or Locality	Environmentally Significant Area
■ Existing Substation	■ Residence	Oil and Gas Plant
— Potential Transmission Line Route	⚡ School	Other Industrial Site
— Potential Salvage of Existing Transmission Line	● Wellsite	Urban Area
— Existing Transmission Line	— Municipal or County Boundary	Water Body
— Proposed Right of Way Boundary	— Pipeline	
■ Construction Workspace	— Railway	
† Cemetery	— Road	

NO: 35029726 - 0025
 DRAWN: SG-AL
 FILE NO.: XXXXXXXX
 REVISION: 0.03.11
 AL FOLDER: 757L South Transmission Line Relocation
DATE: 2021-04-20

0 0.25 0.5 Kilometres
 0 0.25 Miles

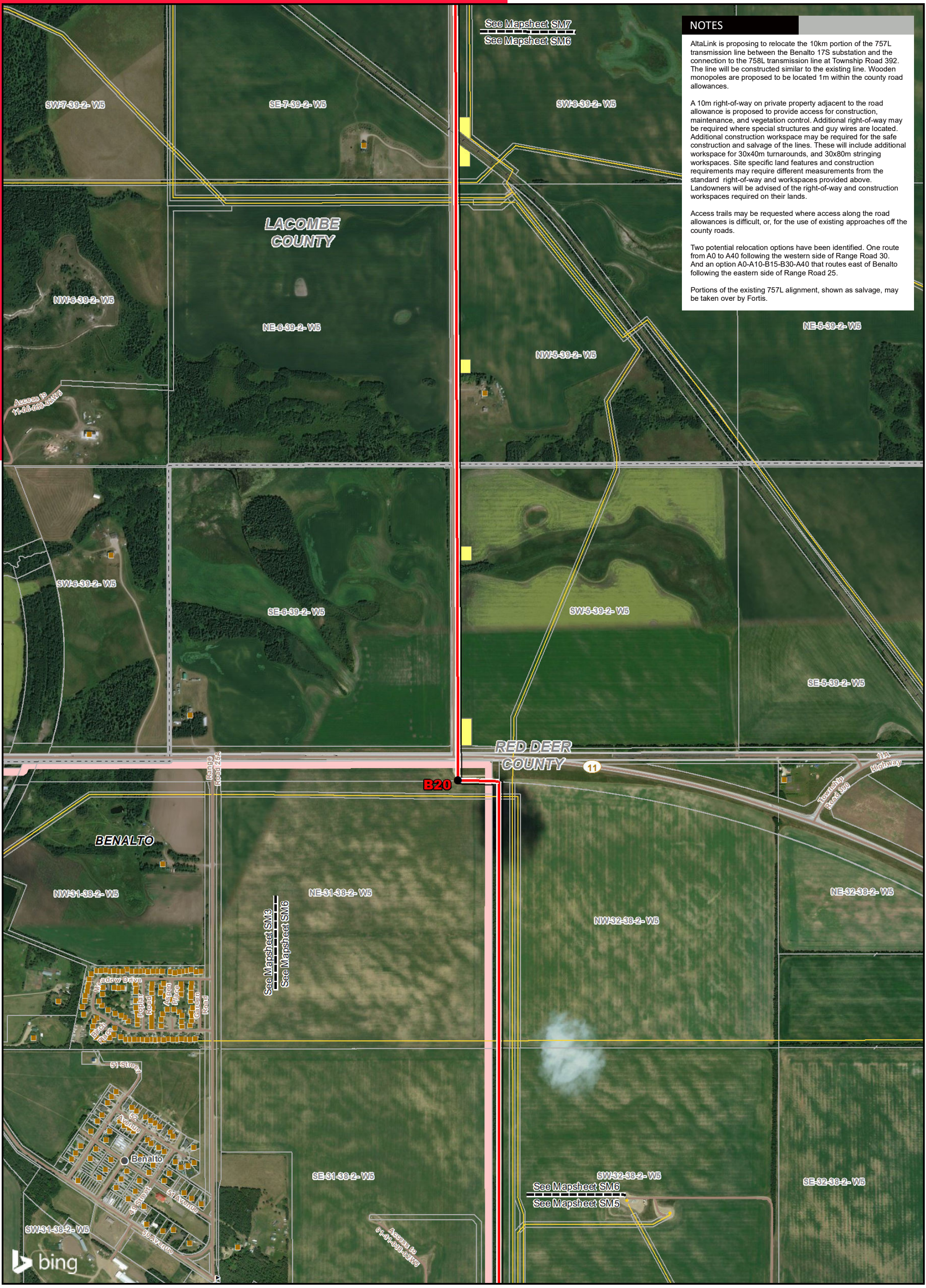
STRIP MOSAIC SM5

ALTALINK
 A BERKSHIRE HATHAWAY ENERGY COMPANY

POTENTIAL

757L South Transmission Line Relocation

Service Layer Credits: © 2021 Microsoft Corporation © 2021 Maxar ©CNES (2021) Distribution Airbus DS
 Although there is no reason to believe that there are any errors associated with the data used to generate this product or in the product itself, users of these data are advised that errors in the data may be present.



NOTES

AltaLink is proposing to relocate the 10km portion of the 757L transmission line between the Benalto 17S substation and the connection to the 758L transmission line at Township Road 392. The line will be constructed similar to the existing line. Wooden monopoles are proposed to be located 1m within the county road allowances.

A 10m right-of-way on private property adjacent to the road allowance is proposed to provide access for construction, maintenance, and vegetation control. Additional right-of-way may be required where special structures and guy wires are located. Additional construction workspace may be required for the safe construction and salvage of the lines. These will include additional workspace for 30x40m turnarounds, and 30x80m stringing workspaces. Site specific land features and construction requirements may require different measurements from the standard right-of-way and workspaces provided above. Landowners will be advised of the right-of-way and construction workspaces required on their lands.

Access trails may be requested where access along the road allowances is difficult, or, for the use of existing approaches off the county roads.

Two potential relocation options have been identified. One route from A0 to A40 following the western side of Range Road 30. And an option A0-A10-B15-B30-A40 that routes east of Benalto following the eastern side of Range Road 25.

Portions of the existing 757L alignment, shown as salvage, may be taken over by Fortis.

LEGEND

- Point Designation
- Existing Substation
- Potential Transmission Line Route
- Potential Salvage of Existing Transmission Line
- - - Existing Transmission Line
- Proposed Right of Way Boundary
- Construction Workspace
- †† Cemetery
- Hamlet or Locality
- Residence
- 🎓 School
- Wellsite
- Municipal or County Boundary
- Pipeline
- Railway
- Road
- Environmentally Significant Area
- Oil and Gas Plant
- Other Industrial Site
- Urban Area
- Water Body

NO: 35029726 - 0025
 DRAWN: SG-AL
 FILE NO.: XXXXXXXX
 REVISION: 0.03.11
 AL FOLDER: 757L South Transmission Line Relocation
DATE: 2021-04-20

0 0.25 0.5 Kilometres
 0 0.25 Miles

STRIP MOSAIC SM6

ALTALINK
 A BERKSHIRE HATHAWAY ENERGY COMPANY

POTENTIAL
757L South Transmission Line Relocation

Service Layer Credits: © 2021 Microsoft Corporation © 2021 Maxar ©CNES (2021) Distribution Airbus DS
 Although there is no reason to believe that there are any errors associated with the data used to generate this product or in the product itself, users of these data are advised that errors in the data may be present.



NOTES

AltaLink is proposing to relocate the 10km portion of the 757L transmission line between the Benalto 17S substation and the connection to the 758L transmission line at Township Road 392. The line will be constructed similar to the existing line. Wooden monopoles are proposed to be located 1m within the county road allowances.

A 10m right-of-way on private property adjacent to the road allowance is proposed to provide access for construction, maintenance, and vegetation control. Additional right-of-way may be required where special structures and guy wires are located. Additional construction workspace may be required for the safe construction and salvage of the lines. These will include additional workspace for 30x40m turnarounds, and 30x80m stringing workspaces. Site specific land features and construction requirements may require different measurements from the standard right-of-way and workspaces provided above. Landowners will be advised of the right-of-way and construction workspaces required on their lands.

Access trails may be requested where access along the road allowances is difficult, or, for the use of existing approaches off the county roads.

Two potential relocation options have been identified. One route from A0 to A40 following the western side of Range Road 30. And an option A0-A10-B15-B30-A40 that routes east of Benalto following the eastern side of Range Road 25.

Portions of the existing 757L alignment, shown as salvage, may be taken over by Fortis.

LEGEND			
● Point Designation	● Hamlet or Locality	Environmentally Significant Area	NO: 35029726 - 0025 DRAWN: SG-AL FILE NO.: XXXXXXXX REVISION: 0.03.11 AL FOLDER: 757L South Transmission Line Relocation DATE: 2021-04-20
■ Existing Substation	■ Residence	Oil and Gas Plant	
— Potential Transmission Line Route	■ School	Other Industrial Site	
— Potential Salvage of Existing Transmission Line	● Wellsite	Urban Area	
— Existing Transmission Line	— Municipal or County Boundary	Water Body	
— Proposed Right of Way Boundary	— Pipeline		
■ Construction Workspace	— Railway		
†† Cemetery	— Road		

STRIP MOSAIC SM7

ALTA LINK
A BERKSHIRE HATHAWAY ENERGY COMPANY

POTENTIAL

757L South Transmission Line Relocation

Service Layer Credits: © 2021 Microsoft Corporation © 2021 Maxar ©CNES (2021) Distribution Airbus DS
 Although there is no reason to believe that there are any errors associated with the data used to generate this product or in the product itself, users of these data are advised that errors in the data may be present.