

**LEGEND**

- Proposed Structure Replacement
- Existing Substation
- Existing Transmission Line
- Mapsheet
- Hamlet or Locality
- Railway
- Road
- Municipal or County Boundary
- Other Protected Area
- Park
- Urban Area
- Water Body

NO.: 35040548  
 DRAWN: SG - AL  
 FILE NO.: XXXXXXX  
 REVISION: 0.00.02  
 AL FOLDER: 777L Transmission Line Structure Replacements

**DATE: 2026-05-19**

0 2.5 5 Kilometres  
 0 2.5 Miles

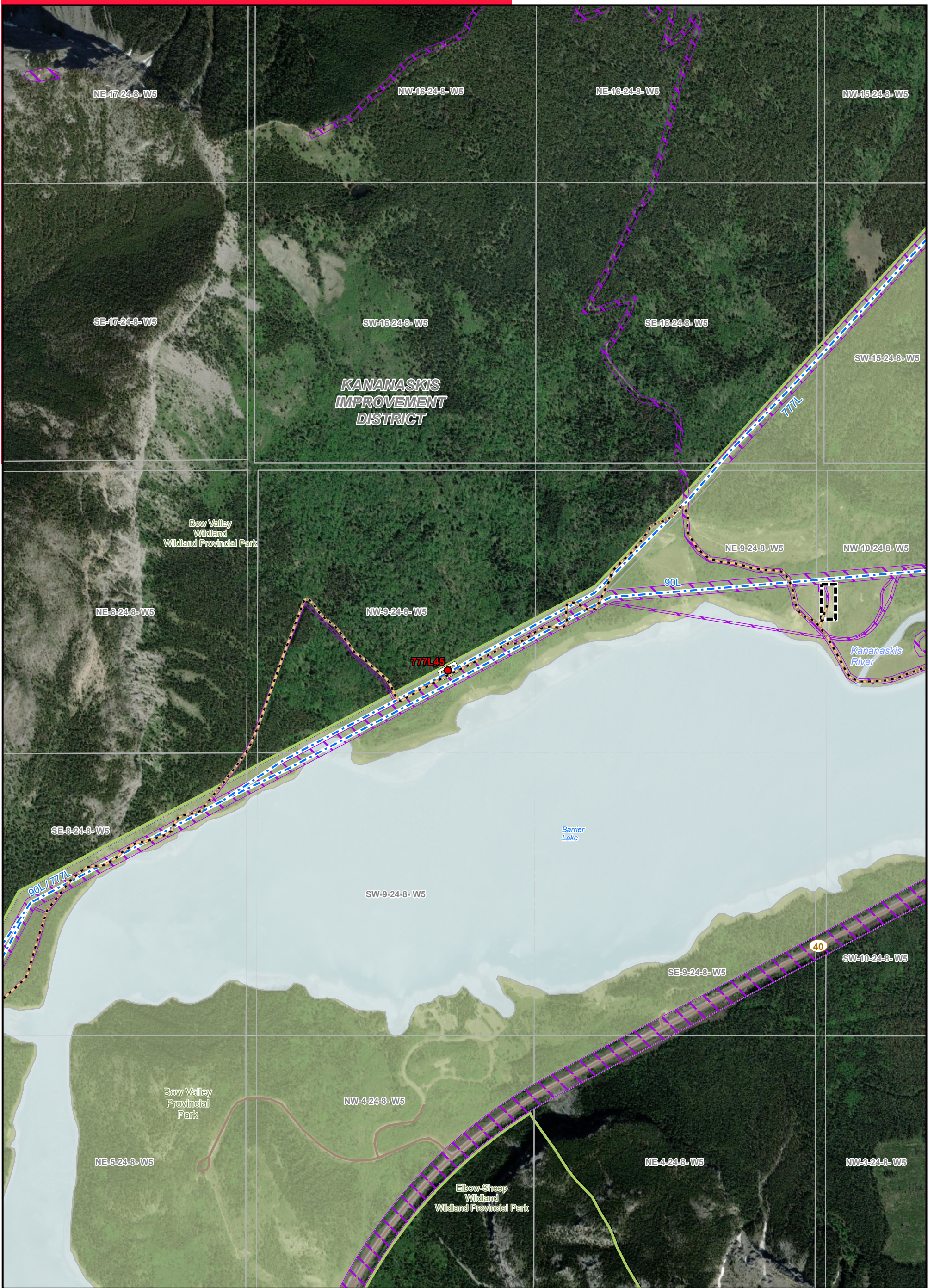
N

Although there is no reason to believe that there are any errors associated with the data used to generate this product or in the product itself, users of these data are advised that errors in the data may be present.

**STRIP INDEX SI**

**ALTALINK**

**PROPOSED**  
 777L Transmission Line  
 Structure Replacements

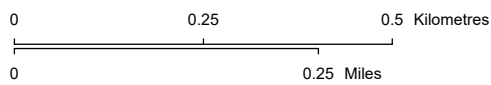


**LEGEND**

- Proposed Structure Replacement
- - - Existing Transmission Line
- - - Access Trail
- Construction Workspace
- Laydown Yard
- Road
- Crown Land
- Other Protected Area
- Park
- Water Body

NO: 35040548  
 DRAWN: SG - AL  
 FILE NO.: XXXXXXXX  
 REVISION: 0.00.02  
 AL FOLDER: 777L Transmission Line  
 Structure Replacements

**DATE: 2026-05-19**



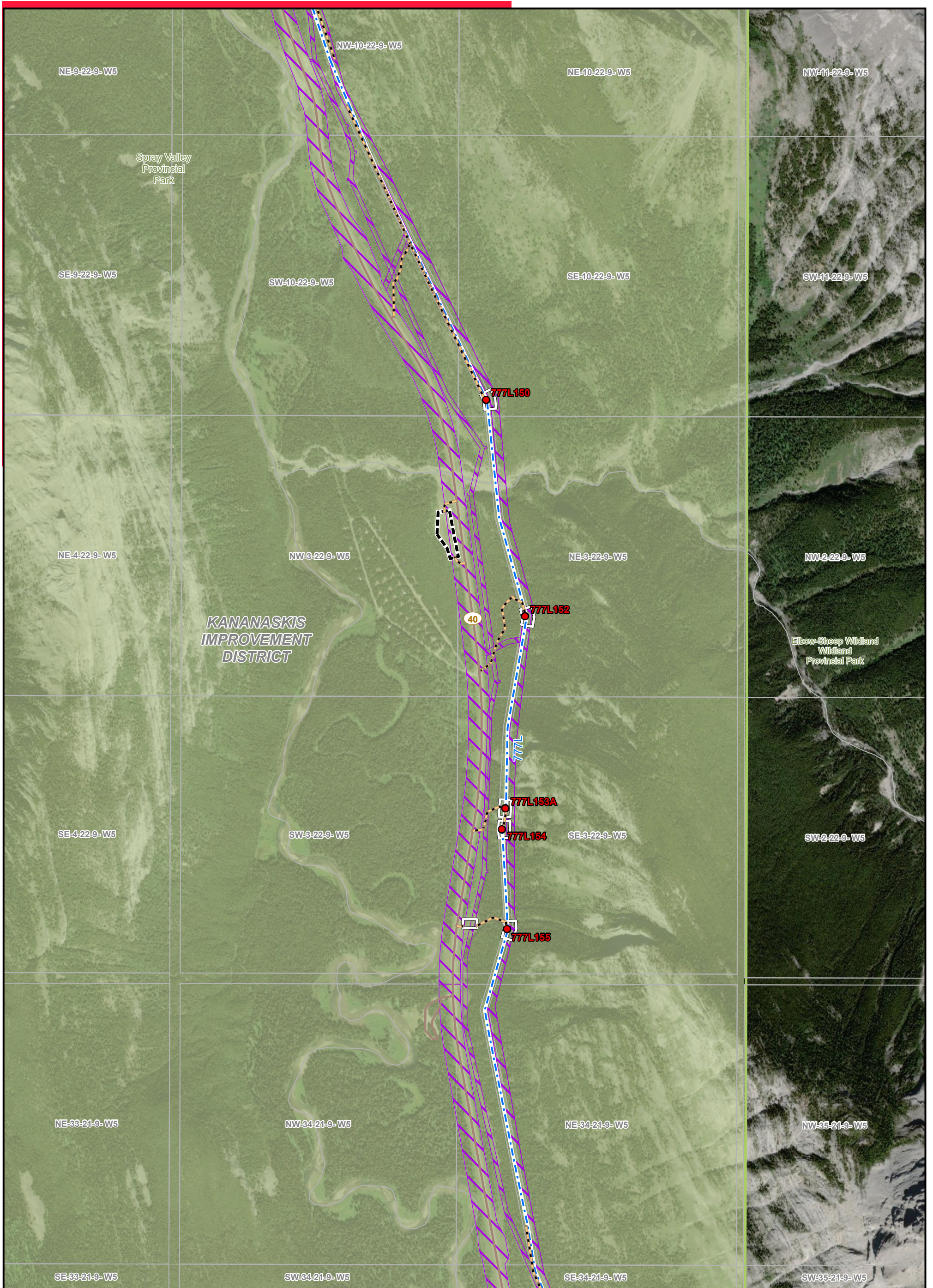
**STRIP MOSAIC SM1**



**PROPOSED**

**777L Transmission Line  
 Structure Replacements**

Service Layer Credits: Source: Esri, Vantor, Earthstar Geographics, and the GIS User Community  
 Although there is no reason to believe that there are any errors associated with the data used to generate  
 this product or in the product itself, users of these data are advised that errors in the data may be present.



**LEGEND**

- Proposed Structure Replacement
- - - Existing Transmission Line
- Access Trail
- Construction Workspace
- Laydown Yard
- Road
- Crown Land
- Other Protected Area
- Park
- Water Body

NO: 35040548  
 DRAWN: SG - AL  
 FILE NO.: XXXXXXX  
 REVISION: 0.00.02  
 AL FOLDER: 777L Transmission Line Structure Replacements

**DATE: 2026-05-19**

0 0.25 0.5 Kilometres  
 0 0.25 Miles

N

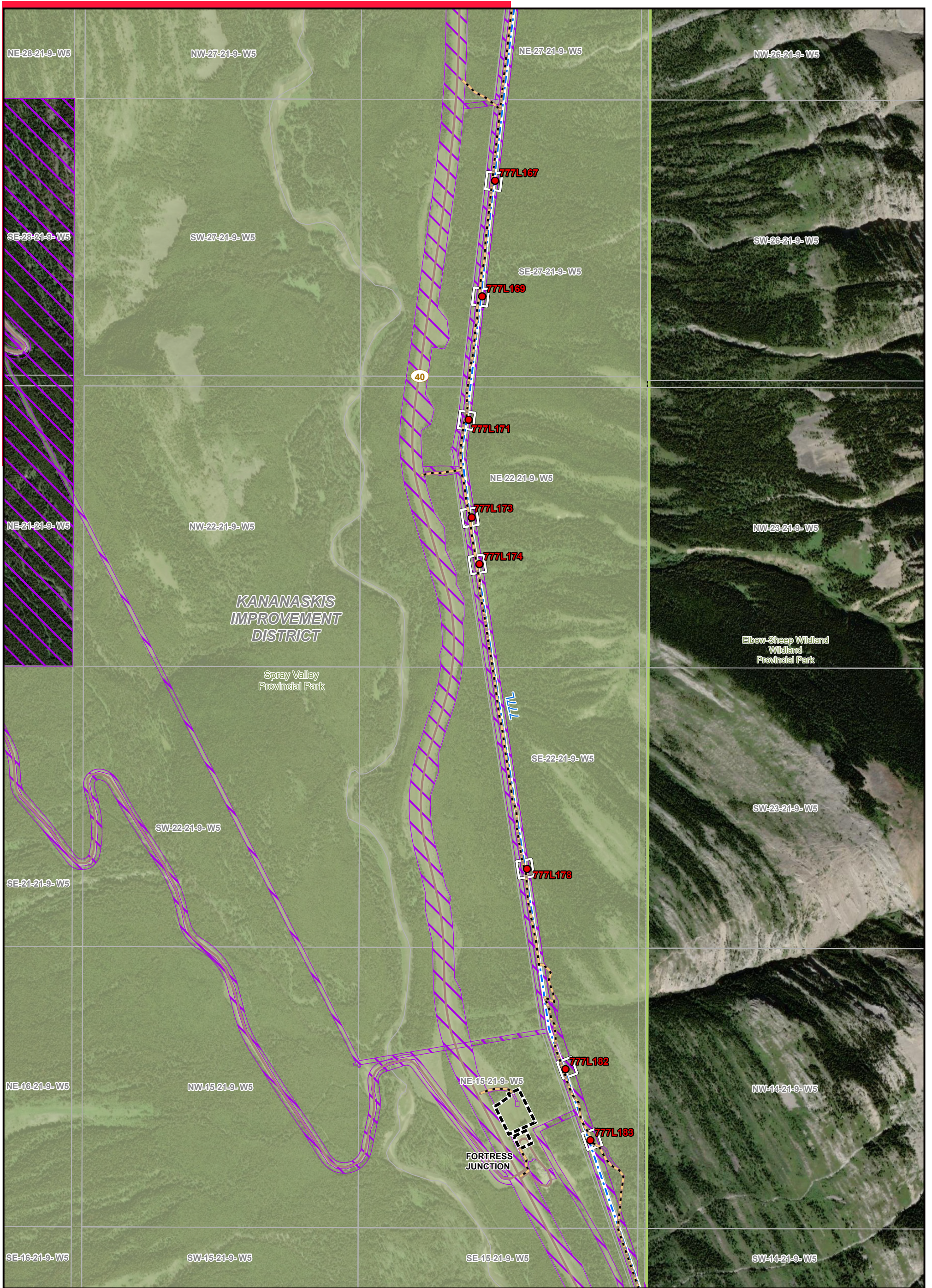
**STRIP MOSAIC SM2**

**ALTALINK**

**PROPOSED**

**777L Transmission Line Structure Replacements**

Service Layer Credits: Source: Esri, Vantor, Earthstar Geographics, and the GIS User Community  
 Although there is no reason to believe that there are any errors associated with the data used to generate this product or in the product itself, users of these data are advised that errors in the data may be present.



**LEGEND**

- Proposed Structure Replacement
- Existing Transmission Line
- Access Trail
- Construction Workspace
- Laydown Yard
- Road
- Crown Land
- Other Protected Area
- Park
- Water Body

NO: 35040548  
 DRAWN: SG - AL  
 FILE NO.: XXXXXXX  
 REVISION: 0.00.02  
 AL FOLDER: 777L Transmission Line Structure Replacements

**DATE: 2026-05-19**

N

0      0.25      0.5 Kilometres

0      0.25 Miles

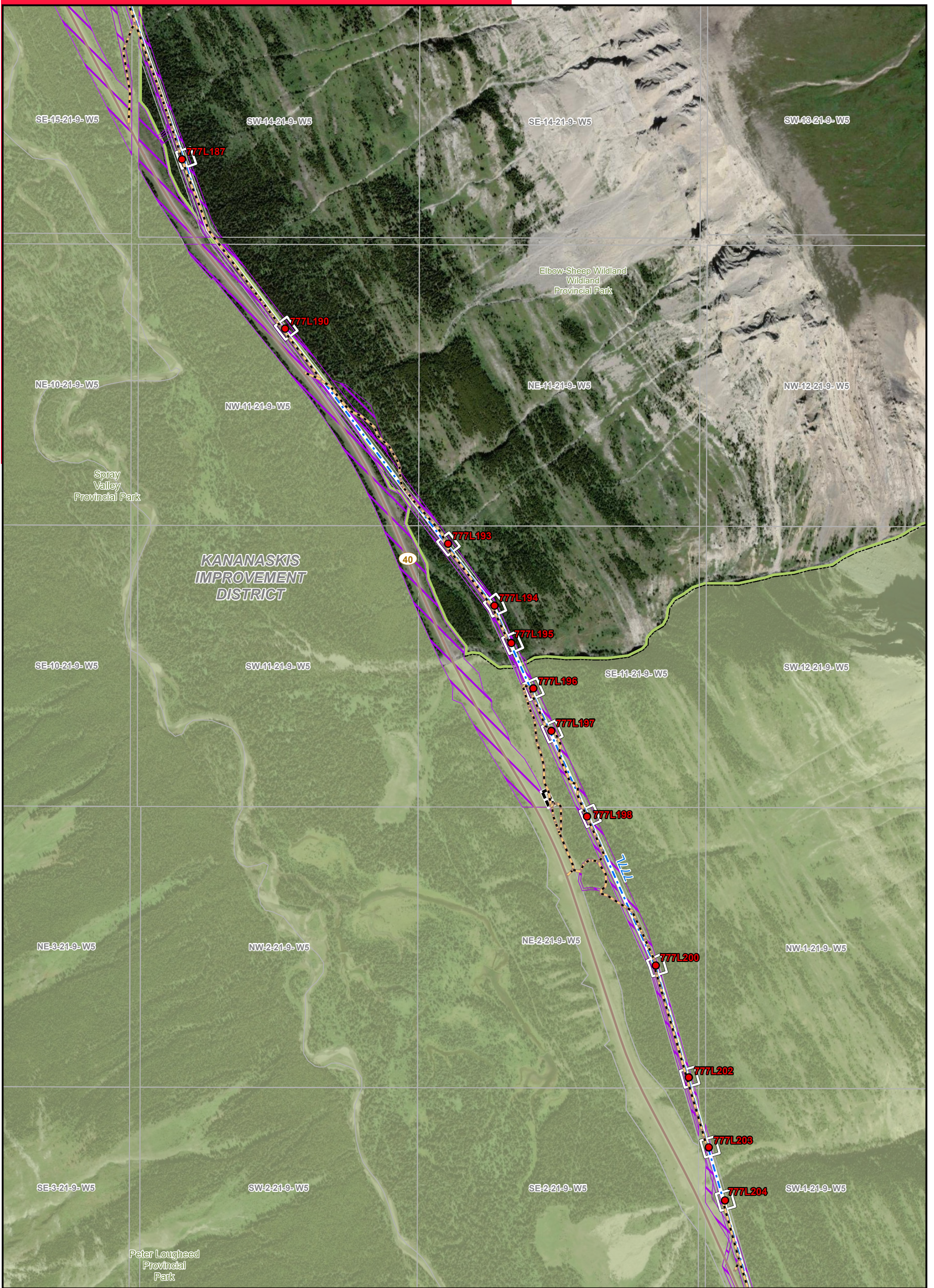
**STRIP MOSAIC SM3**

**ALTALINK**

**PROPOSED**

**777L Transmission Line Structure Replacements**

Service Layer Credits: Source: Esri, Vantor, Earthstar Geographics, and the GIS User Community  
 Although there is no reason to believe that there are any errors associated with the data used to generate this product or in the product itself, users of these data are advised that errors in the data may be present.



**LEGEND**

- Proposed Structure Replacement
- Existing Transmission Line
- Access Trail
- Construction Workspace
- ▭ Laydown Yard
- Road
- ▭ Crown Land
- ▭ Other Protected Area
- ▭ Park
- ▭ Water Body

NO: 35040548  
 DRAWN: SG - AL  
 FILE NO.: XXXXXXX  
 REVISION: 0.00.02  
 AL FOLDER: 777L Transmission Line Structure Replacements  
**DATE: 2026-05-19**

0 0.25 0.5 Kilometres  
 0 0.25 Miles

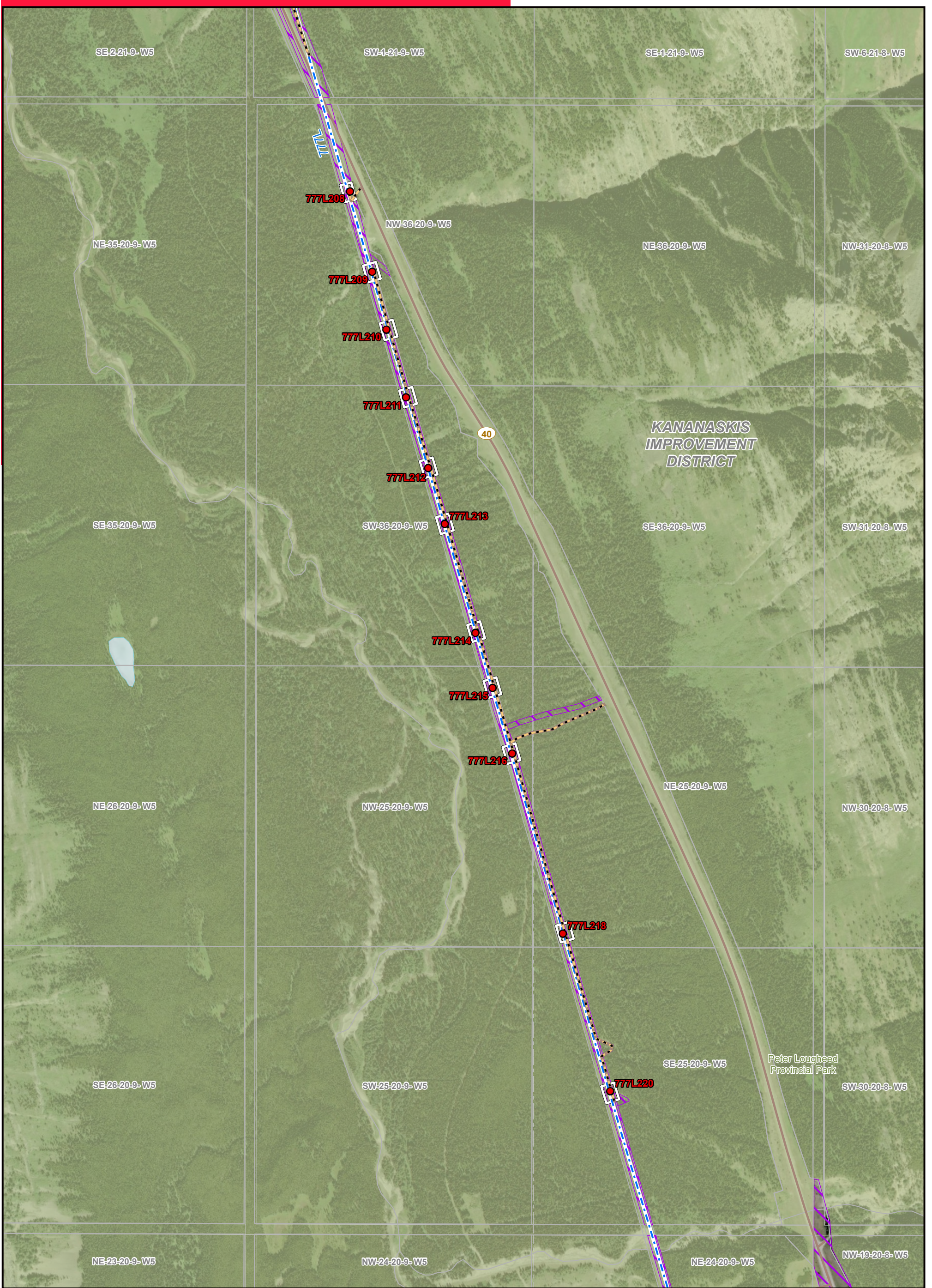
**STRIP MOSAIC SM4**

**ALTALINK**

**PROPOSED**

**777L Transmission Line Structure Replacements**

Service Layer Credits: Source: Esri, Vantor, Earthstar Geographics, and the GIS User Community  
 Although there is no reason to believe that there are any errors associated with the data used to generate this product or in the product itself, users of these data are advised that errors in the data may be present.

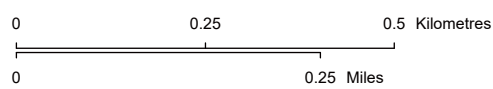


**LEGEND**

- Proposed Structure Replacement
- - - Existing Transmission Line
- Access Trail
- Construction Workspace
- Laydown Yard
- Road
- Crown Land
- Other Protected Area
- Park
- Water Body

NO: 35040548  
 DRAWN: SG - AL  
 FILE NO.: XXXXXXXX  
 REVISION: 0.00.02  
 AL FOLDER: 777L Transmission Line  
 Structure Replacements

**DATE: 2026-05-19**



**STRIP MOSAIC SM5**



**PROPOSED**

**777L Transmission Line  
 Structure Replacements**

Service Layer Credits: Source: Esri, Vantor, Earthstar Geographics, and the GIS User Community  
 Although there is no reason to believe that there are any errors associated with the data used to generate  
 this product or in the product itself, users of these data are advised that errors in the data may be present.