

NOVEMBER 2025



# 853AL Transmission Line Relocation

You are receiving this newsletter because you are near the proposed 853AL Transmission Line Relocation Project, and we want your input.

To accommodate the Eastern Irrigation District’s expansion of the Snake Lake Reservoir, AltaLink is proposing to modify, relocate and salvage a portion of an existing 138 kilovolt (kV) transmission line called 853AL. The project is located southeast of the Town of Bassano, and south of Highway 1.

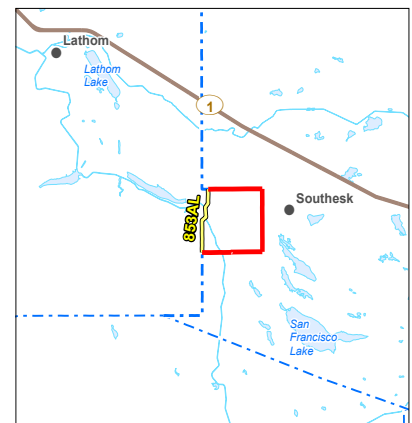
AltaLink’s relocation project and the Eastern Irrigation District’s project are separate. For more information about the Eastern Irrigation District’s project, see their contact information included in this newsletter.

## Project details

To accommodate Eastern Irrigation District’s expansion of Snake Lake Reservoir, AltaLink is proposing to modify its 853AL transmission line by:

- relocating 3.4 kilometres (km) of the existing 853AL transmission line to a 9.5 km route within the road allowances surrounding the proposed reservoir expansion
- salvaging approximately 3.4 km of the existing transmission line following the energization of the relocated transmission line

More information about the relocation can be found on the map included.



**LEGEND**

- Proposed Transmission Line Relocation (Red line)
- Proposed Salvage of Existing Transmission Line (Yellow line)
- Existing Transmission Line (Blue dashed line)
- Hamlet or Locality (Black dot)
- Road (Brown line)
- Water Body (Blue area)

## ANTICIPATED PROJECT SCHEDULE

|  |   |  |   |
|--|---|--|---|
| <p><b>NOVEMBER 2025 - JANUARY 2026</b></p> <p>Notify and consult with stakeholders</p> | <p><b>FEBRUARY 2026</b></p> <p>File application with Alberta Utilities Commission (AUC)</p> | <p><b>FALL 2026</b></p> <p>Start construction if project is approved</p> | <p><b>SPRING 2027</b></p> <p>Construction completed</p> |
|--|---|--|---|

Although we attempt to follow the anticipated project schedule it is subject to change. We will continue to provide you with updated schedule information if required as the project progresses.

## Proposed structures

The existing structures are wood monopole and two pole structures that are 17 and 21 metres (m) tall. They will be replaced with similar structures that will be approximately 20 and 23 m tall and made of wood or steel.

Specialized structures, such as taller, self-supporting, steel structures may be required to accommodate site-specific conditions or equipment clearance requirements. We are working with Eastern Irrigation District to confirm these clearance requirements.

A **right-of-way** of approximately 10 m will be required adjacent to the road allowance.



Left: the existing monopole structures on the 853AL transmission line  
Centre: an example showing the proposed monopole structures  
Right: an example showing a proposed steel monopole structure

## Providing your input

We will contact landowners, residents, and occupants near the proposed project to gather input and address questions or concerns.

After our consultation and notification process is complete, we will file an application with the Alberta Utilities Commission (AUC).

We will notify stakeholders when we file the application and again once the AUC has reached a decision about the project. To learn more about the AUC process and how you can become involved, please refer to the brochure included in this package titled *Participating in the AUC's independent review process to consider facility applications*.

### DEFINITIONS:

**Kilovolt (kV)** | A kilovolt is equal to one thousand volts and is commonly used when describing transmission and distribution lines. AltaLink's transmission lines range from 69 kV (69,000 volts) to 500 kV (500,000 volts). Light bulbs typically range from 120 to 300 volts.

**Right-of-way** | The right-of-way is a strip of land required for the construction and safe operation of a transmission line. A right-of-way refers to the physical space a transmission line encompasses including areas on either side of the line. The majority of the right-of-way can still be used by the landowner. Buildings cannot be placed on the right-of-way, but can be built up to the edge of the right-of-way.

### INCLUDED IN THIS INFORMATION PACKAGE:

- Project map
- AUC brochure: *Participating in the AUC's independent review process to consider facility applications*
- Electric and Magnetic Fields (EMF) Information

## Contact us

To learn more about the proposed project please contact:

### ALTALINK

1-877-267-1453 (toll free)

E-mail: [stakeholderrelations@altalink.ca](mailto:stakeholderrelations@altalink.ca)

To subscribe to this project:

visit [www.altalink.ca/projects](http://www.altalink.ca/projects), search for the project title, and click 'subscribe to updates'

For more information about how AltaLink protects your personal information:

visit our website at [www.altalink.ca/privacy](http://www.altalink.ca/privacy) or contact us directly via e-mail [privacy@altalink.ca](mailto:privacy@altalink.ca) or phone at 1-877-267-6760.

To learn more about the Eastern Irrigation District project, please contact:

**Nathan Fontaine, Land Supervisor**

Email: [nathan.fontaine@eid.ca](mailto:nathan.fontaine@eid.ca)

To learn more about the application and review process, please contact:

**Alberta Utilities Commission (AUC)**

780-427-4903 (toll-free by dialing 310-0000 before the number)

Email: [consumer-relations@auc.ab.ca](mailto:consumer-relations@auc.ab.ca)

Let's talk transmission



[www.facebook.com/altalinktransmission](http://www.facebook.com/altalinktransmission)



[www.x.com/altalink](http://www.x.com/altalink)

Sustainable  
Electricity  
Leader



Chef de file en  
matière d'électricité  
durable

