

NOTES

NOTES IN THIS SECTION DESCRIBE COMMENTS AND MODIFICATIONS THAT PERTAIN TO A SPECIFIC SECTION OF THE TRANSMISSION ROUTE.

At designation point A0, the transmission line will connect into the customer's substation. The customer's substation site will be identified at a later time within the 3rd party substation site area identified on the map.

Where the potential transmission line parallels Township Road 104, the transmission line will be located 4m south of the government road allowance on private property and require a 16.5m right of way.

Where the potential transmission line is proposed north of designation point B5, the transmission line will be located 4m west of the undeveloped government road allowance on private property and require a 16.5m right of way.

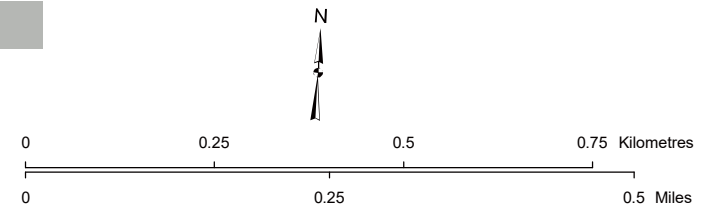
Where illustrated, access trails and a 40m x 40m workspace may be required for construction purposes. Access trails may be up to 8m wide.

Directly behind a corner or angle structure, a 45m x 150m construction workspace may be required for the stringing of the line.

LEGEND

- Point Designation
- ✕ Approved Wind Turbine
- Potential Transmission Line
- Right-of-Way Boundary
- Access Trail
- ▭ 3rd Party Substation Site Area
- ▭ Guy Anchor Easement
- ▭ Construction Workspace
- Road
- ▭ Environmentally Significant Area
- ▭ Water Body

NO:
 DRAWN: SG - Maskwa
 FILE NO.: BullTrail-SM1
 REVISION: 0.00.00
 AL FOLDER: BullTrail
DATE: 2022-06-09



STRIP MOSAIC SM1



EDF Bull Trail Wind Power Connection
 240 kV TRANSMISSION LINE AND
 SUBSTATION TARGET AREA

Photography dated: 2021 Source: Esri, Maxar, Earthstar Geographics, and the GIS User Community
 Although there is no reason to believe that there are any errors associated with the data used to generate this product or in the product itself, users of these data are advised that errors in the data may be present.



NOTES

NOTES IN THIS SECTION DESCRIBE COMMENTS AND MODIFICATIONS THAT PERTAIN TO A SPECIFIC SECTION OF THE TRANSMISSION ROUTE.

Where the potential transmission line is proposed east of designation point A5, the transmission line will be located 4m south of the government road allowance on private property and require a 16.5m right of way.

Where the potential transmission line is proposed west of designation point A5 and parallels the government road allowance, the transmission line will be located on private property south of the road allowance and require a 44m right of way to accommodate larger structures types for the terrain and coulee crossings.

Where the potential transmission line is proposed on a diagonal line northwest of designation point C10, the transmission line will be located on private property and require a 66m right of way to accommodate larger structure types for the terrain and coulee crossings.

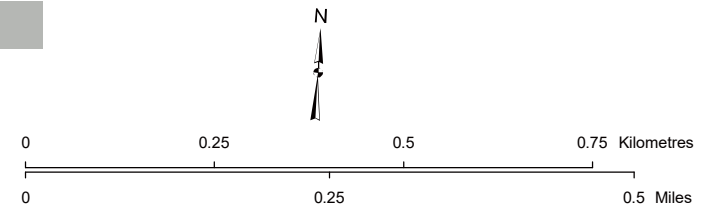
Where illustrated, access trails and a 40m x 40m workspace may be required for construction purposes. Access trails may be up to 8m wide.

Directly behind a corner or angle structure, a 45m x 150m construction workspace may be required for the stringing of the line.

LEGEND

- Point Designation
- ✕ Approved Wind Turbine
- Potential Transmission Line
- Right-of-Way Boundary
- Access Trail
- Guy Anchor Easement
- Construction Workspace
- Residence
- River or Stream
- Road
- Environmentally Significant Area

NO:
 DRAWN: SG - Maskwa
 FILE NO.: BullTrail-SM1
 REVISION: 0.00.00
 AL FOLDER: BullTrail
DATE: 2022-06-09

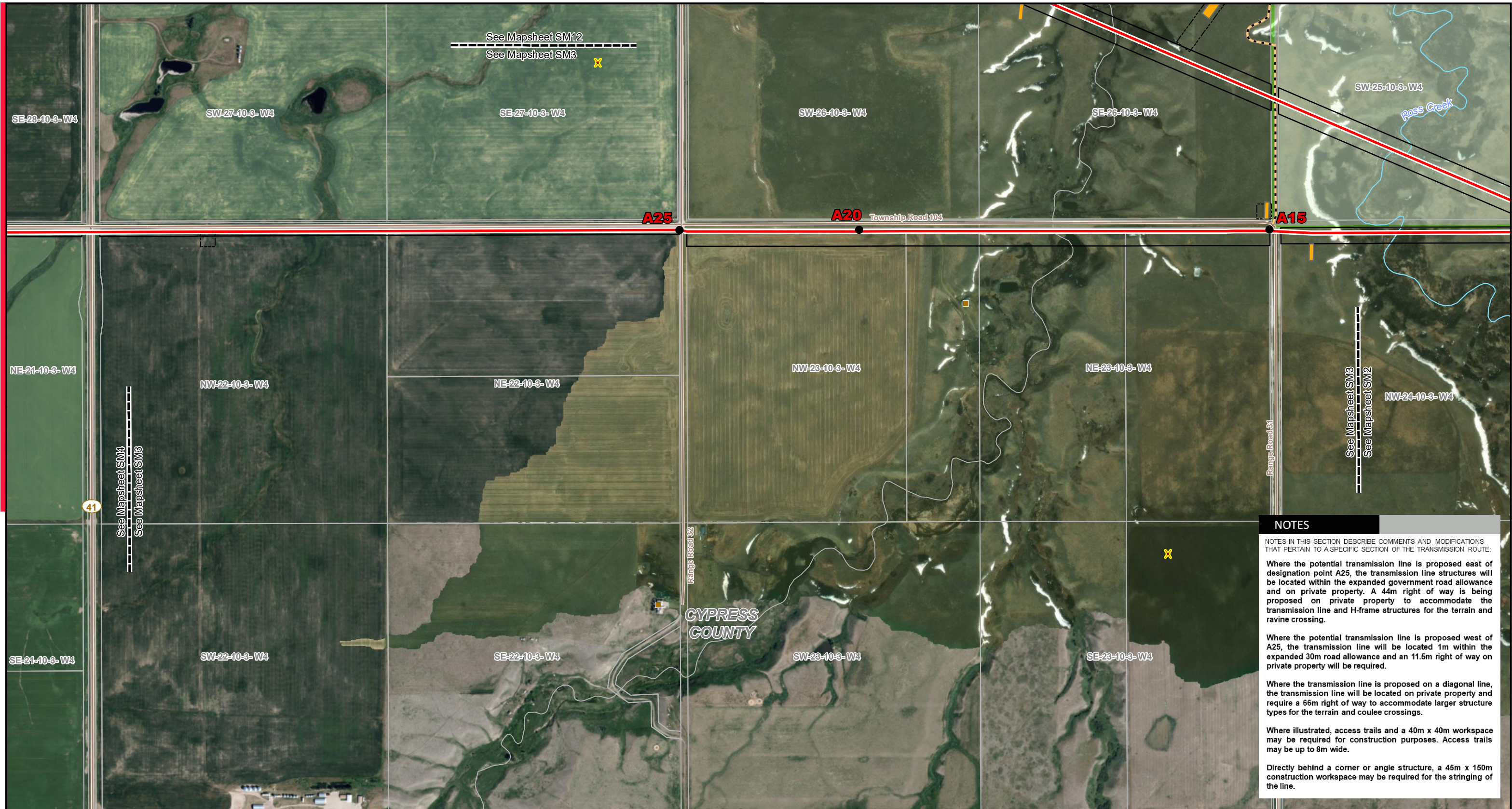


Photography dated: 2021 Source: Esri, Maxar, Earthstar Geographics, and the GIS User Community
 Although there is no reason to believe that there are any errors associated with the data used to generate this product or in the product itself, users of these data are advised that errors in the data may be present.

STRIP MOSAIC SM2



EDF Bull Trail Wind Power Connection
 240 kV TRANSMISSION LINE AND
 SUBSTATION TARGET AREA



NOTES

NOTES IN THIS SECTION DESCRIBE COMMENTS AND MODIFICATIONS THAT PERTAIN TO A SPECIFIC SECTION OF THE TRANSMISSION ROUTE.

Where the potential transmission line is proposed east of designation point A25, the transmission line structures will be located within the expanded government road allowance and on private property. A 44m right of way is being proposed on private property to accommodate the transmission line and H-frame structures for the terrain and ravine crossing.

Where the potential transmission line is proposed west of A25, the transmission line will be located 1m within the expanded 30m road allowance and an 11.5m right of way on private property will be required.

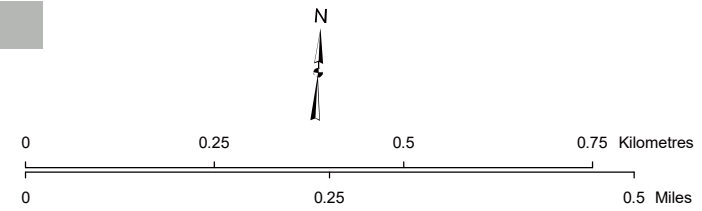
Where the transmission line is proposed on a diagonal line, the transmission line will be located on private property and require a 66m right of way to accommodate larger structure types for the terrain and coulee crossings.

Where illustrated, access trails and a 40m x 40m workspace may be required for construction purposes. Access trails may be up to 8m wide.

Directly behind a corner or angle structure, a 45m x 150m construction workspace may be required for the stringing of the line.

- LEGEND**
- Point Designation
 - ✕ Proposed Wind Turbine
 - Potential Transmission Line
 - Right-of-Way Boundary
 - Access Trail
 - Guy Anchor Easement
 - Construction Workspace
 - Residence
 - River or Stream
 - Road
 - Environmentally Significant Area

NO:
 DRAWN: SG - Maskwa
 FILE NO.: BullTrail-SM1
 REVISION: 0.00.00
 AL FOLDER: BullTrail
DATE: 2022-06-09

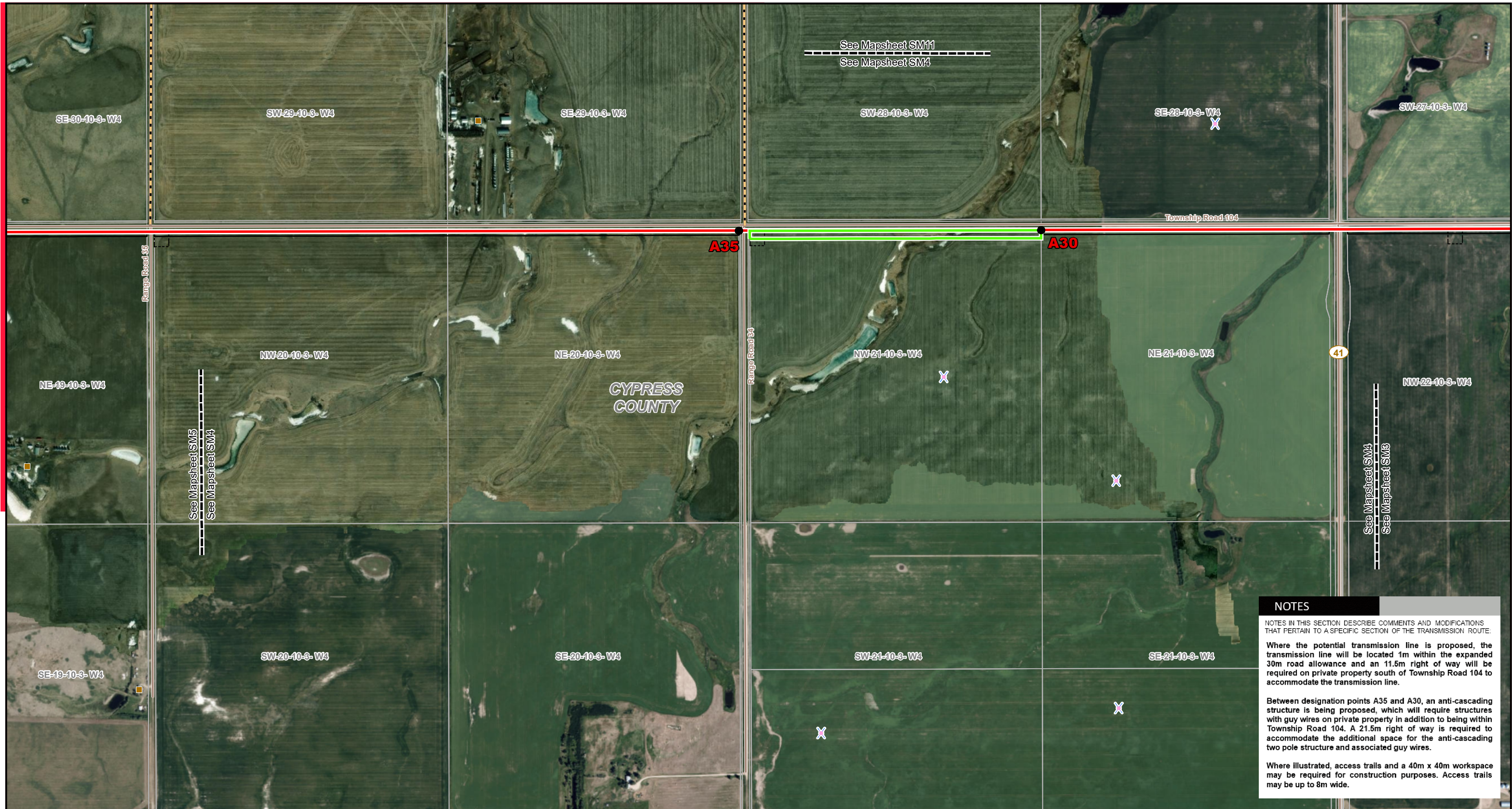


Photography dated: 2021 Source: Esri, Maxar, Earthstar Geographics, and the GIS User Community
 Although there is no reason to believe that there are any errors associated with the data used to generate this product or in the product itself, users of these data are advised that errors in the data may be present.

STRIP MOSAIC SM3



EDF Bull Trail Wind Power Connection
 240 kV TRANSMISSION LINE AND
 SUBSTATION TARGET AREA



See Mapsheet SM11
See Mapsheet SM4

See Mapsheet SM5
See Mapsheet SM4

See Mapsheet SM4
See Mapsheet SM3

NOTES

NOTES IN THIS SECTION DESCRIBE COMMENTS AND MODIFICATIONS THAT PERTAIN TO A SPECIFIC SECTION OF THE TRANSMISSION ROUTE.

Where the potential transmission line is proposed, the transmission line will be located 1m within the expanded 30m road allowance and an 11.5m right of way will be required on private property south of Township Road 104 to accommodate the transmission line.

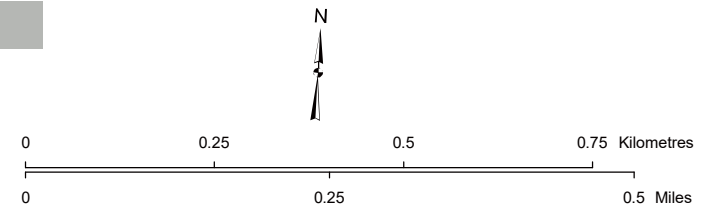
Between designation points A35 and A30, an anti-cascading structure is being proposed, which will require structures with guy wires on private property in addition to being within Township Road 104. A 21.5m right of way is required to accommodate the additional space for the anti-cascading two pole structure and associated guy wires.

Where illustrated, access trails and a 40m x 40m workspace may be required for construction purposes. Access trails may be up to 8m wide.

LEGEND

- Point Designation
- ✕ Approved Wind Turbine
- Potential Transmission Line
- Right-of-Way Boundary
- Access Trail
- ▭ Potential Anti-Cascading Target Area
- ▭ Construction Workspace
- Residence
- Road

NO:
DRAWN: SG - Maskwa
FILE NO.: BullTrail-SM1
REVISION: 0.00.00
AL FOLDER: BullTrail
DATE: 2022-06-09

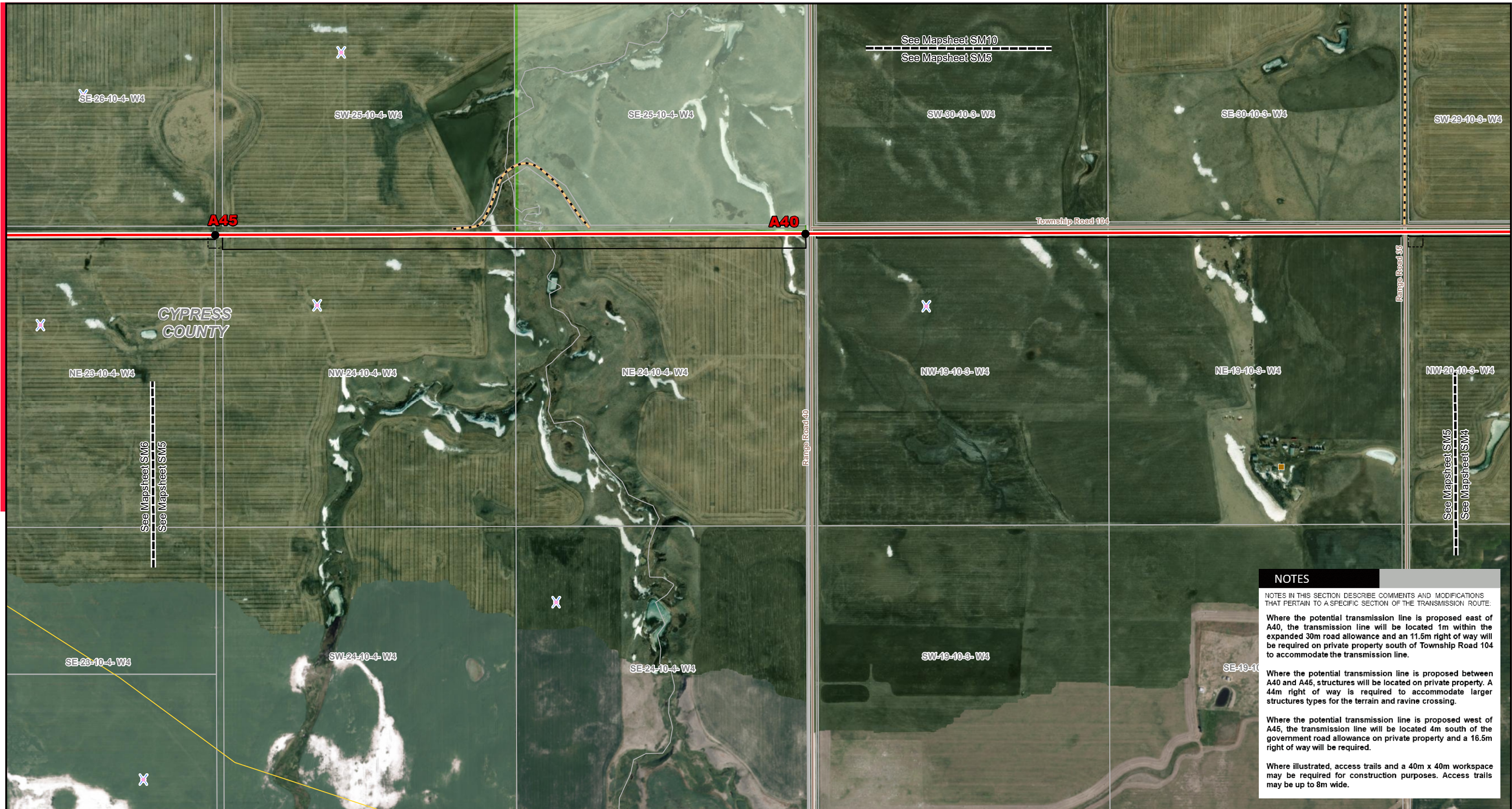


Photography dated: 2021 Source: Esri, Maxar, Earthstar Geographics, and the GIS User Community
Although there is no reason to believe that there are any errors associated with the data used to generate this product or in the product itself, users of these data are advised that errors in the data may be present.

STRIP MOSAIC SM4



EDF Bull Trail Wind Power Connection
240 kV TRANSMISSION LINE AND
SUBSTATION TARGET AREA



NOTES

NOTES IN THIS SECTION DESCRIBE COMMENTS AND MODIFICATIONS THAT PERTAIN TO A SPECIFIC SECTION OF THE TRANSMISSION ROUTE.

Where the potential transmission line is proposed east of A40, the transmission line will be located 1m within the expanded 30m road allowance and an 11.5m right of way will be required on private property south of Township Road 104 to accommodate the transmission line.

Where the potential transmission line is proposed between A40 and A45, structures will be located on private property. A 44m right of way is required to accommodate larger structures types for the terrain and ravine crossing.

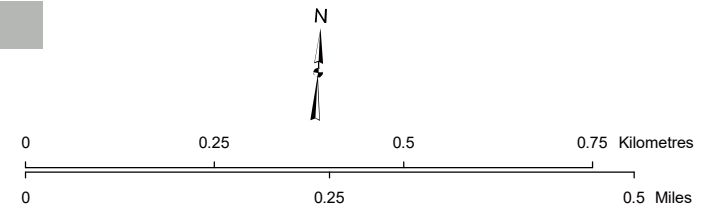
Where the potential transmission line is proposed west of A45, the transmission line will be located 4m south of the government road allowance on private property and a 16.5m right of way will be required.

Where illustrated, access trails and a 40m x 40m workspace may be required for construction purposes. Access trails may be up to 8m wide.

LEGEND

- Point Designation
- ✕ Approved Wind Turbine
- Potential Transmission Line
- Right-of-Way Boundary
- Access Trail
- Construction Workspace
- Residence
- Pipeline
- Road
- Environmentally Significant Area

NO:
 DRAWN: SG - Maskwa
 FILE NO.: BullTrail-SM1
 REVISION: 0.00.00
 AL FOLDER: BullTrail
DATE: 2022-06-09



Photography dated: 2021 Source: Esri, Maxar, Earthstar Geographics, and the GIS User Community
 Although there is no reason to believe that there are any errors associated with the data used to generate this product or in the product itself, users of these data are advised that errors in the data may be present.

STRIP MOSAIC SM5



EDF Bull Trail Wind Power Connection
 240 kV TRANSMISSION LINE AND
 SUBSTATION TARGET AREA



NOTES

NOTES IN THIS SECTION DESCRIBE COMMENTS AND MODIFICATIONS THAT PERTAIN TO A SPECIFIC SECTION OF THE TRANSMISSION ROUTE.

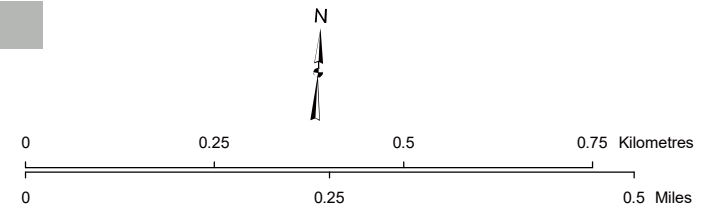
Where the potential transmission line parallels Township Road 104, the transmission line will be located 4m south of the government road allowance on private property and require a 16.5m right of way.

Where the potential transmission line does not parallel Township Road 104 and is proposed on private property, a 25m right of way will be required to accommodate the transmission line.

Where illustrated, access trails and a 40m x 40m workspace may be required for construction purposes. Access trails may be up to 8m wide.

- LEGEND**
- Point Designation
 - ✕ Proposed Wind Turbine
 - ✕ Approved Wind Turbine
 - Potential Transmission Line
 - Right-of-Way Boundary
 - Guy Anchor Easement
 - Construction Workspace
 - Residence
 - Wellsite
 - Pipeline
 - Road
 - Water Body

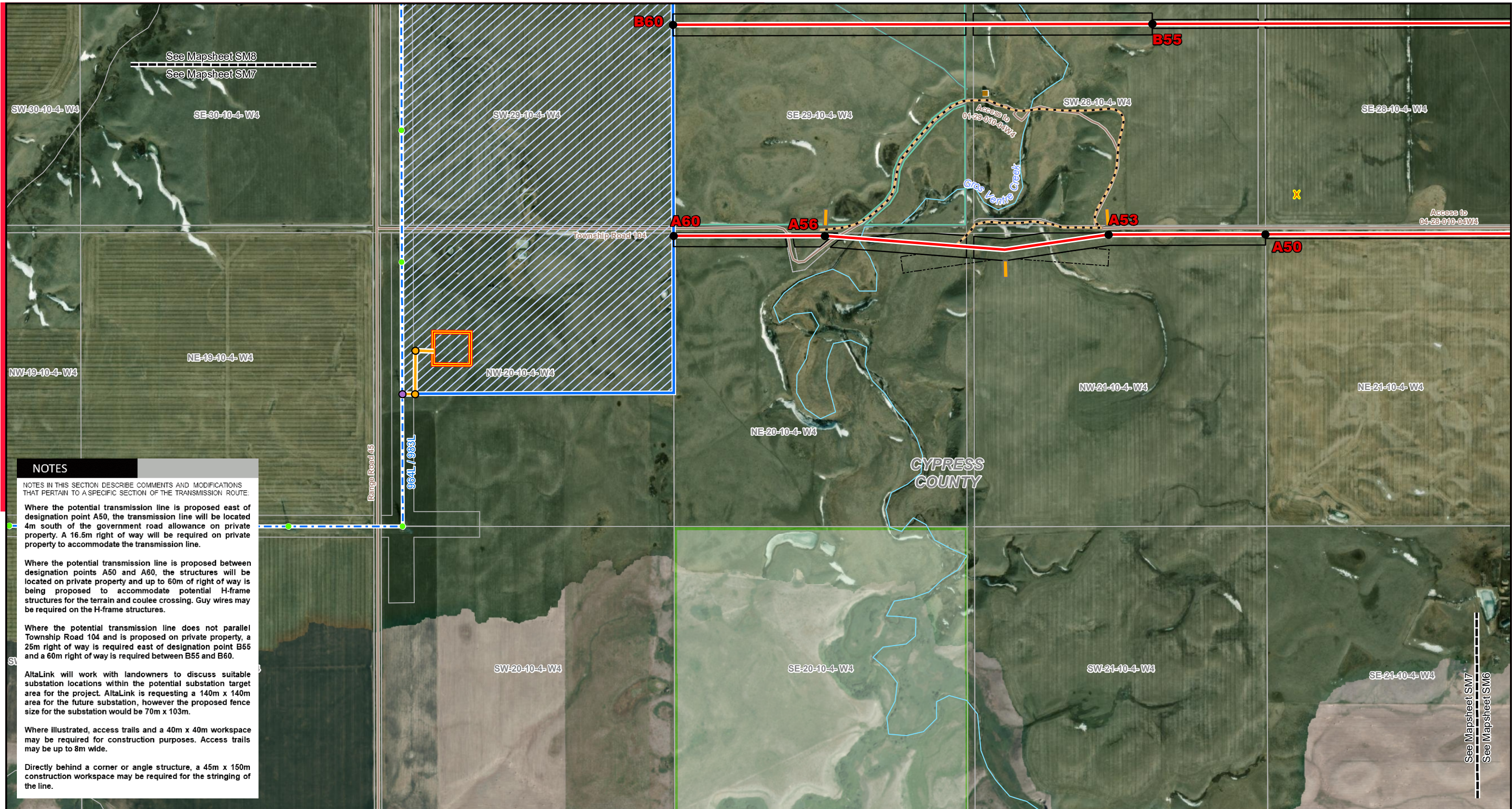
NO:
 DRAWN: SG - Maskwa
 FILE NO.: BullTrail-SM1
 REVISION: 0.00.00
 AL FOLDER: BullTrail
DATE: 2022-06-09



Photography dated: 2021 Source: Esri, Maxar, Earthstar Geographics, and the GIS User Community
 Although there is no reason to believe that there are any errors associated with the data used to generate this product or in the product itself, users of these data are advised that errors in the data may be present.

STRIP MOSAIC SM6

EDF Bull Trail Wind Power Connection
 240 kV TRANSMISSION LINE AND
 SUBSTATION TARGET AREA



NOTES

NOTES IN THIS SECTION DESCRIBE COMMENTS AND MODIFICATIONS THAT PERTAIN TO A SPECIFIC SECTION OF THE TRANSMISSION ROUTE.

Where the potential transmission line is proposed east of designation point A50, the transmission line will be located 4m south of the government road allowance on private property. A 16.6m right of way will be required on private property to accommodate the transmission line.

Where the potential transmission line is proposed between designation points A50 and A60, the structures will be located on private property and up to 60m of right of way is being proposed to accommodate potential H-frame structures for the terrain and coulee crossing. Guy wires may be required on the H-frame structures.

Where the potential transmission line does not parallel Township Road 104 and is proposed on private property, a 25m right of way is required east of designation point B55 and a 60m right of way is required between B55 and B60.

AltaLink will work with landowners to discuss suitable substation locations within the potential substation target area for the project. AltaLink is requesting a 140m x 140m area for the future substation, however the proposed fence size for the substation would be 70m x 103m.

Where illustrated, access trails and a 40m x 40m workspace may be required for construction purposes. Access trails may be up to 8m wide.

Directly behind a corner or angle structure, a 45m x 150m construction workspace may be required for the stringing of the line.

LEGEND		
● Point Designation	— Access Trail	— Road
● Cypress Structure	— 983AL Transmission Line	— Crown Land
● Cypress Structure Modification	— Potential Substation Target Area	— Environmentally Significant Area
● Existing Transmission Tower	— Guy Anchor Easement	— Construction Workspace
✕ Proposed Wind Turbine	— Woolchester 1019S Substation	— Residence
— Potential Transmission Line	— River or Stream	
— Existing Transmission Line		
— Right-of-Way Boundary		

NO:
DRAWN: SG - Maskwa
FILE NO.: BullTrail-SM1
REVISION: 0.00.00
AL FOLDER: BullTrail
DATE: 2022-06-09

Photography dated: 2021 Source: Esri, Maxar, Earthstar Geographics, and the GIS User Community
Although there is no reason to believe that there are any errors associated with the data used to generate this product or in the product itself, users of these data are advised that errors in the data may be present.

0 0.25 0.5 0.75 Kilometres
0 0.25 0.5 Miles

STRIP MOSAIC SM7

ALTALINK
A BERKSHIRE HATHAWAY ENERGY COMPANY

EDF Bull Trail Wind Power Connection

240 kV TRANSMISSION LINE AND SUBSTATION TARGET AREA

NOTES

NOTES IN THIS SECTION DESCRIBE COMMENTS AND MODIFICATIONS THAT PERTAIN TO A SPECIFIC SECTION OF THE TRANSMISSION ROUTE.

Where the potential transmission line is proposed between B55 and B60, as well as C20 and C30, a 60m right of way is being requested to accommodate longer span lengths and potential H-frame structures for the terrain and coulee crossings.

Where the potential transmission line is proposed east of C20 and B55, a 25m right of way is being requested to accommodate the transmission line.

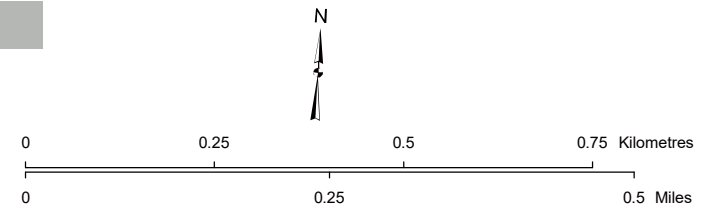
AltaLink will work with landowners to discuss suitable substation locations within the potential substation target area for the project. AltaLink is requesting a 140m x 140m area for the future substation, however the proposed fence size for the substation would be 70m x 103m.

Where illustrated, access trails and a 40m x 40m workspace may be required for construction purposes. Access trails may be up to 8m wide.



- LEGEND**
- Point Designation
 - Existing Transmission Tower
 - ✕ Proposed Wind Turbine
 - Potential Transmission Line
 - - - Existing Transmission Line
 - Right-of-Way Boundary
 - - - Access Trail
 - ▨ Potential Substation Target Area
 - Residence
 - Wellsite
 - Pipeline
 - River or Stream
 - Road
 - ▭ Crown Land
 - ▭ Environmentally Significant Area

NO:
 DRAWN: SG - Maskwa
 FILE NO.: BullTrail-SM1
 REVISION: 0.00.00
 AL FOLDER: BullTrail
DATE: 2022-06-09



Photography dated: 2021 Source: Esri, Maxar, Earthstar Geographics, and the GIS User Community
 Although there is no reason to believe that there are any errors associated with the data used to generate this product or in the product itself, users of these data are advised that errors in the data may be present.

STRIP MOSAIC SM8

EDF Bull Trail Wind Power Connection
 240 kV TRANSMISSION LINE AND
 SUBSTATION TARGET AREA

NOTES

NOTES IN THIS SECTION DESCRIBE COMMENTS AND MODIFICATIONS THAT PERTAIN TO A SPECIFIC SECTION OF THE TRANSMISSION ROUTE.

Where the potential transmission line is proposed, a 25m right of way is required to accommodate the transmission line.

Between designation points B40 and B45, an anti-cascading structure is proposed. A 35m right of way is required to accommodate the additional space for the anti-cascading two pole structure and associated guy wires.

Where illustrated, access trails and a 40m x 40m workspace may be required for construction purposes. Access trails may be up to 8m wide.

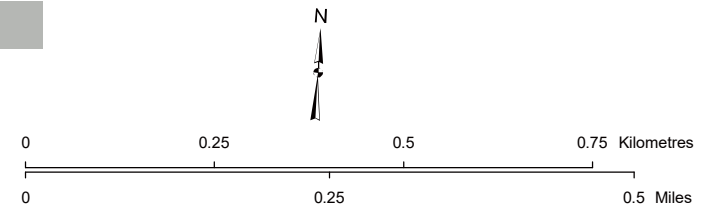
Directly behind a corner or angle structure, a 45m x 150m construction workspace may be required for the stringing of the line.



LEGEND

- Point Designation
- ✕ Proposed Wind Turbine
- ✕ Approved Wind Turbine
- Potential Transmission Line
- Right-of-Way Boundary
- Access Trail
- ▭ Potential Anti-Cascading Target Area
- Guy Anchor Easement
- ▭ Construction Workspace
- Residence
- Pipeline
- Road

NO:
 DRAWN: SG - Maskwa
 FILE NO.: BullTrail-SM1
 REVISION: 0.00.00
 AL FOLDER: BullTrail
DATE: 2022-06-09



Photography dated: 2021 Source: Esri, Maxar, Earthstar Geographics, and the GIS User Community
 Although there is no reason to believe that there are any errors associated with the data used to generate this product or in the product itself, users of these data are advised that errors in the data may be present.

STRIP MOSAIC SM9



EDF Bull Trail Wind Power Connection
 240 kV TRANSMISSION LINE AND
 SUBSTATION TARGET AREA



NOTES

NOTES IN THIS SECTION DESCRIBE COMMENTS AND MODIFICATIONS THAT PERTAIN TO A SPECIFIC SECTION OF THE TRANSMISSION ROUTE.

Where the potential transmission line is proposed, a 25m right of way is required to accommodate the transmission line.

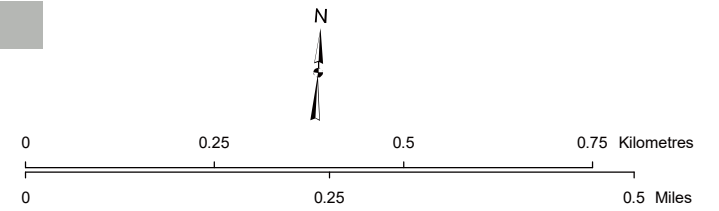
West of designation point B40, an anti-cascading structure is proposed. A 35m right of way is required to accommodate the additional space for the anti-cascading two pole structure and associated guy wires.

Where illustrated, access trails and a 40m x 40m workspace may be required for construction purposes. Access trails may be up to 8m wide.

LEGEND

- Point Designation
- ✕ Approved Wind Turbine
- Potential Transmission Line
- Right-of-Way Boundary
- - - Access Trail
- ▭ Potential Anti-Cascading Target Area
- - - Construction Workspace
- Residence
- Road
- ▭ Environmentally Significant Area

NO:
 DRAWN: SG - Maskwa
 FILE NO.: BullTrail-SM1
 REVISION: 0.00.00
 AL FOLDER: BullTrail
DATE: 2022-06-09



Photography dated: 2021 Source: Esri, Maxar, Earthstar Geographics, and the GIS User Community
 Although there is no reason to believe that there are any errors associated with the data used to generate this product or in the product itself, users of these data are advised that errors in the data may be present.

STRIP MOSAIC SM10



EDF Bull Trail Wind Power Connection

**240 kV TRANSMISSION LINE AND
 SUBSTATION TARGET AREA**



NOTES

NOTES IN THIS SECTION DESCRIBE COMMENTS AND MODIFICATIONS THAT PERTAIN TO A SPECIFIC SECTION OF THE TRANSMISSION ROUTE.

Where the potential transmission line is proposed, a 25m right of way is required to accommodate the transmission line.

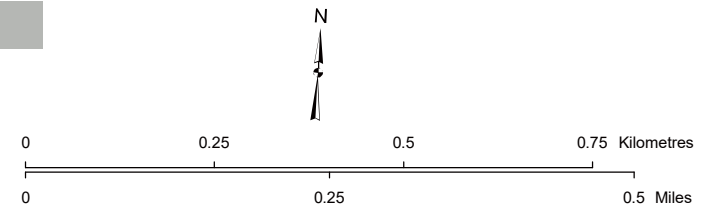
Between designation points B30 and B35, an anti-cascading structure is proposed. A 35m right of way is required to accommodate the additional space for the anti-cascading two pole structure and associated guy wires.

Where illustrated, access trails and a 40m x 40m workspace may be required for construction purposes. Access trails may be up to 8m wide.

LEGEND

- Point Designation
- ✕ Proposed Wind Turbine
- ✕ Approved Wind Turbine
- Potential Transmission Line
- Right-of-Way Boundary
- Access Trail
- ▭ Potential Anti-Cascading Target Area
- ▭ Construction Workspace
- Residence
- Wellsite
- Road

NO:
 DRAWN: SG - Maskwa
 FILE NO.: BullTrail-SM1
 REVISION: 0.00.00
 AL FOLDER: BullTrail
DATE: 2022-06-09



STRIP MOSAIC SM11



EDF Bull Trail Wind Power Connection

240 kV TRANSMISSION LINE AND
 SUBSTATION TARGET AREA

Photography dated: 2021 Source: Esri, Maxar, Earthstar Geographics, and the GIS User Community
 Although there is no reason to believe that there are any errors associated with the data used to generate this product or in the product itself, users of these data are advised that errors in the data may be present.

NOTES

NOTES IN THIS SECTION DESCRIBE COMMENTS AND MODIFICATIONS THAT PERTAIN TO A SPECIFIC SECTION OF THE TRANSMISSION ROUTE.

Where the potential transmission line is proposed west of designation point B25, a 25m right of way is required to accommodate the transmission line.

Where the potential transmission line is proposed east of designation point B25, a 66m right of way is required to accommodate larger structure types for the terrain and coulee crossings.

Where illustrated, access trails and a 40m x 40m workspace may be required for construction purposes. Access trails may be up to 8m wide.

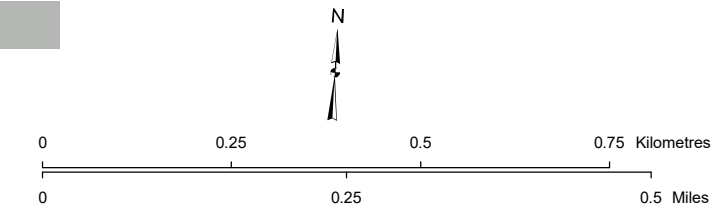
Directly behind a corner or angle structure, a 45m x 150m construction workspace may be required for the stringing of the line.



LEGEND

- Point Designation
- ✕ Proposed Wind Turbine
- Potential Transmission Line
- Right-of-Way Boundary
- Access Trail
- Guy Anchor Easement
- Construction Workspace
- Residence
- Wellsite
- River or Stream
- Road
- Environmentally Significant Area
- Water Body

NO:
 DRAWN: SG - Maskwa
 FILE NO.: BullTrail-SM1
 REVISION: 0.00.00
 AL FOLDER: BullTrail
DATE: 2022-06-09



STRIP MOSAIC SM12



EDF Bull Trail Wind Power Connection
 240 kV TRANSMISSION LINE AND
 SUBSTATION TARGET AREA

Photography dated: 2021 Source: Esri, Maxar, Earthstar Geographics, and the GIS User Community
 Although there is no reason to believe that there are any errors associated with the data used to generate this product or in the product itself, users of these data are advised that errors in the data may be present.

NOTES

NOTES IN THIS SECTION DESCRIBE COMMENTS AND MODIFICATIONS THAT PERTAIN TO A SPECIFIC SECTION OF THE TRANSMISSION ROUTE.

Where the potential transmission line is proposed west of designation point B15, a 66m right of way is required to accommodate larger structure types for the terrain and coulee crossings.

Where the potential transmission line is proposed east of designation point B15, a 25m right of way is required to accommodate the transmission line.

Where illustrated, access trails and a 40m x 40m workspace may be required for construction purposes. Access trails may be up to 8m wide.

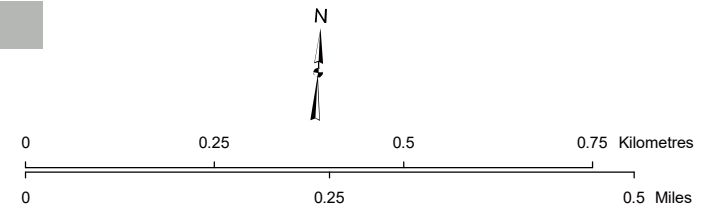
Directly behind a corner or angle structure, a 45m x 150m construction workspace may be required for the stringing of the line.



LEGEND

- Point Designation
- ✕ Approved Wind Turbine
- Potential Transmission Line
- Right-of-Way Boundary
- Access Trail
- Guy Anchor Easement
- Construction Workspace
- River or Stream
- Road
- Environmentally Significant Area

NO:
 DRAWN: SG - Maskwa
 FILE NO.: BullTrail-SM1
 REVISION: 0.00.00
 AL FOLDER: BullTrail
DATE: 2022-06-09



Photography dated: 2021 Source: Esri, Maxar, Earthstar Geographics, and the GIS User Community
 Although there is no reason to believe that there are any errors associated with the data used to generate this product or in the product itself, users of these data are advised that errors in the data may be present.

STRIP MOSAIC SM13



EDF Bull Trail Wind Power Connection
 240 kV TRANSMISSION LINE AND
 SUBSTATION TARGET AREA



NOTES

NOTES IN THIS SECTION DESCRIBE COMMENTS AND MODIFICATIONS THAT PERTAIN TO A SPECIFIC SECTION OF THE TRANSMISSION ROUTE.

Where the potential transmission line is proposed west of designation point B10, a 25m right of way is required to accommodate the transmission line.

Where the potential transmission line is proposed south of designation point B10, the transmission line will be located 4m west of the undeveloped government road allowance on private property and require a 16.5m right of way.

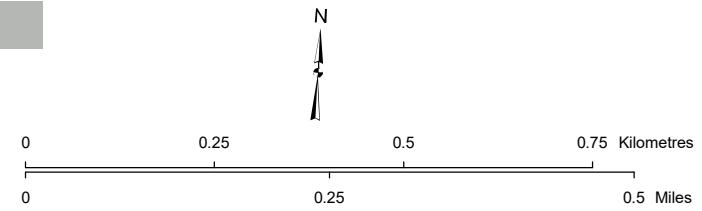
Where illustrated, access trails and a 40m x 40m workspace may be required for construction purposes. Access trails may be up to 8m wide.

Directly behind a corner or angle structure, a 45m x 150m construction workspace may be required for the stringing of the line.

LEGEND

- Point Designation
- ✕ Approved Wind Turbine
- Potential Transmission Line
- Right-of-Way Boundary
- - - Access Trail
- Guy Anchor Easement
- Construction Workspace
- Residence
- Road
- Environmentally Significant Area

NO:
 DRAWN: SG - Maskwa
 FILE NO.: BullTrail-SM1
 REVISION: 0.00.00
 AL FOLDER: BullTrail
DATE: 2022-06-09



STRIP MOSAIC SM14



EDF Bull Trail Wind Power Connection
 240 kV TRANSMISSION LINE AND
 SUBSTATION TARGET AREA

Photography dated: 2021 Source: Esri, Maxar, Earthstar Geographics, and the GIS User Community
 Although there is no reason to believe that there are any errors associated with the data used to generate this product or in the product itself, users of these data are advised that errors in the data may be present.