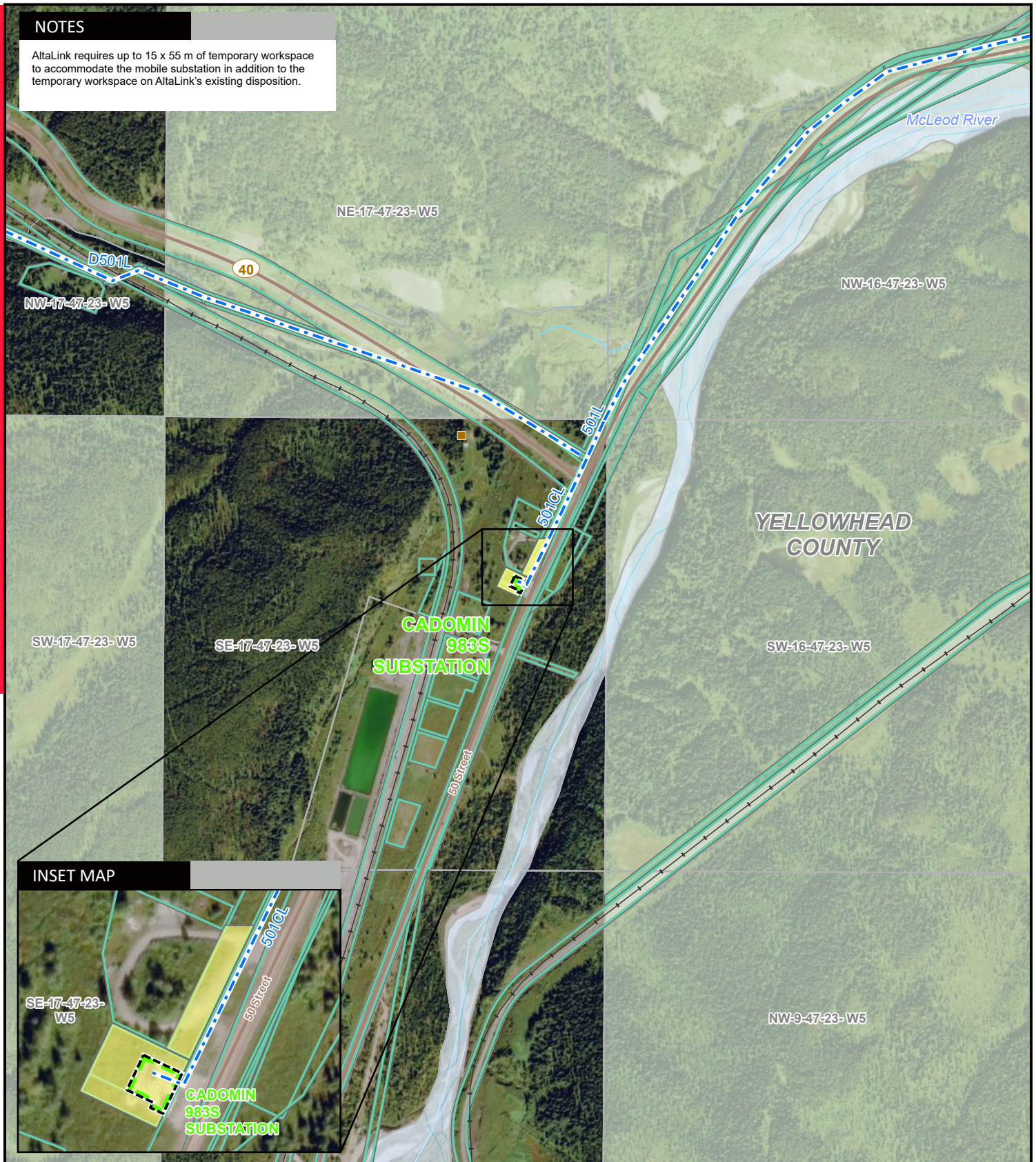


NOTES

AltaLink requires up to 15 x 55 m of temporary workspace to accommodate the mobile substation in addition to the temporary workspace on AltaLink's existing disposition.



YELLOWHEAD COUNTY

McLeod River

NE-17-47-23- W5

NW-16-47-23- W5

NW-17-47-23- W5

40

D501L

501L

501CL

CADOMIN 983S SUBSTATION

SW-17-47-23- W5

SE-17-47-23- W5

SW-16-47-23- W5

50 Street

INSET MAP

SE-17-47-23- W5

CADOMIN 983S SUBSTATION

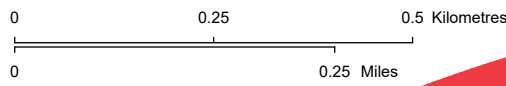
NW-9-47-23- W5

LEGEND

- Existing Transmission Line
- Proposed Upgrade to Existing Substation
- Temporary Workspace
- Residence
- Railway
- River or Stream
- Road
- Crown Land
- Environmentally Significant Area
- Water Body

NO: 35030380 - 0025
 DRAWN: SG - AL
 FILE NO.: XXXXXXX
 REVISION: 0.00.02
 AL FOLDER: Cadomin Substation Upgrade

DATE: 2025-12-09



DETAIL PHOTO DP1



PROPOSED

Cadomin Area Load

Service Layer Credits: Source: Esri, Maxar, Earthstar Geographics, and the GIS User Community
 Although there is no reason to believe that there are any errors associated with the data used to generate this product or in the product itself, users of these data are advised that errors in the data may be present.