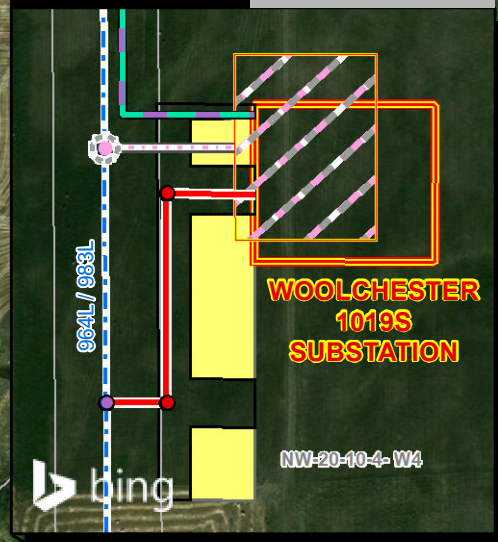
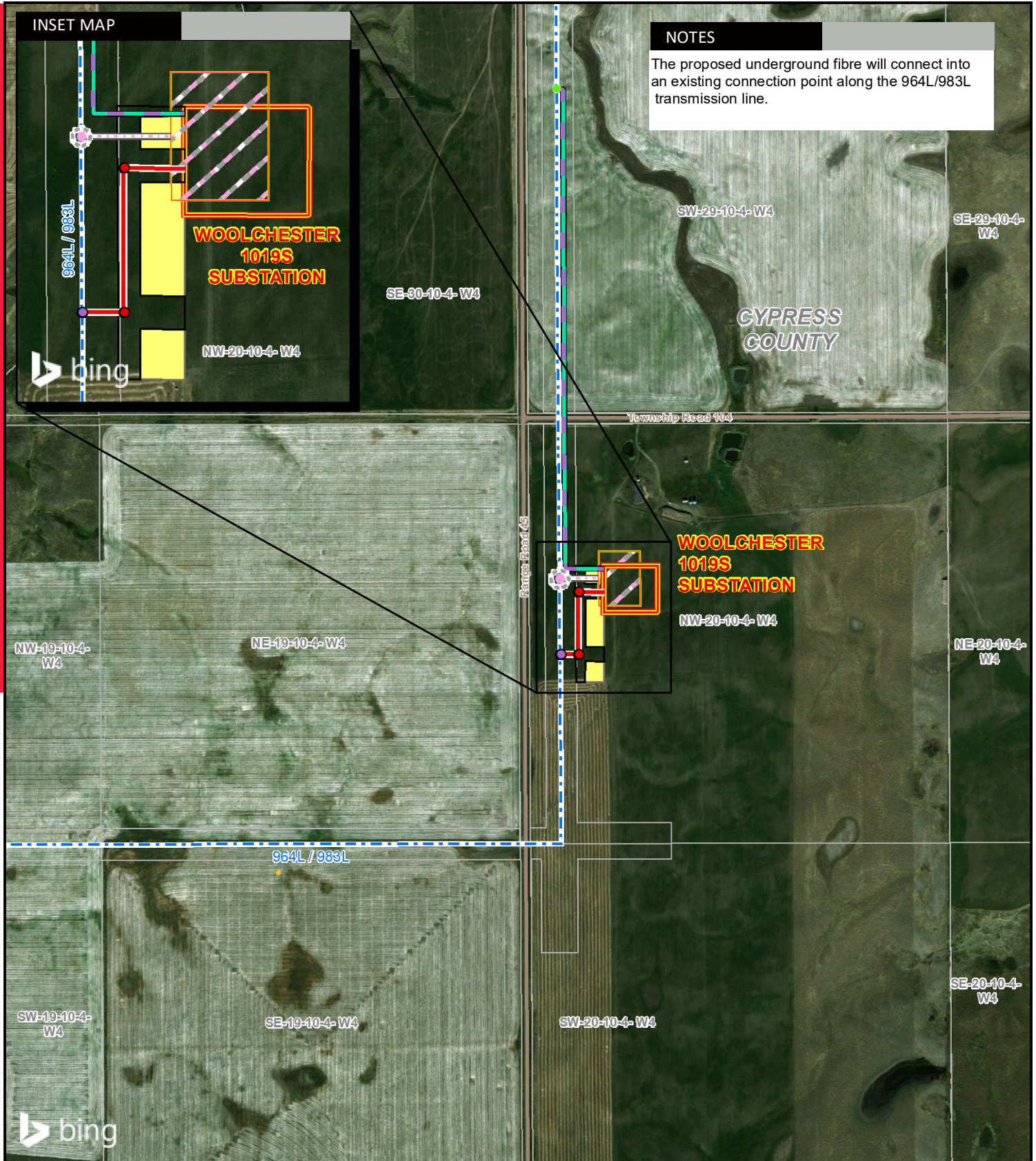


INSET MAP



NOTES

The proposed underground fibre will connect into an existing connection point along the 964L/983L transmission line.

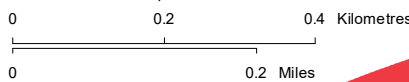


LEGEND

- Proposed Structure Addition
- Proposed Existing Structure Modification
- Previously Approved Structure Addition
- Existing Structure
- Proposed Transmission Line
- Proposed Underground Fibre Optic Cable
- Previously Approved Transmission Line
- - - Existing Transmission Line
- Proposed Right of Way Boundary
- Proposed Customer Substation
- Previously Approved Customer Substation
- Proposed Construction Workspace
- Wellsite
- Road

NO: 35026583 - 6201
 DRAWN: MR - AL
 FILE NO.: XXXXXXX
 REVISION: 1.00.00
 AL FOLDER: Cypress Wind Power Connection

DATE: 2022-02-04



DETAIL PHOTO DP1



PROPOSED

Cypress Wind Power Connection

Service Layer Credits: © 2022 Microsoft Corporation © 2022 Maxar ©CNES (2022) Distribution Airbus DS
 Although there is no reason to believe that there are any errors associated with the data used to generate this product or in the product itself, users of these data are advised that errors in the data may be present.