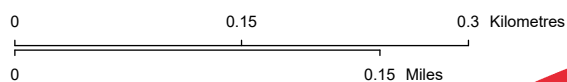


LEGEND

- Proposed Structure Modification
- Pipeline
- Proposed Salvage of Existing Transmission Line
- Road
- - - Existing Transmission Line
- Airport
- Proposed Salvage of Existing Substation
- Oil and Gas Plant
- Access Trail
- Construction Workspace
- Residence

NO: 35039618
 DRAWN: SG - AL
 FILE NO.: XXXXXXX
 REVISION: 0.00.00
 AL FOLDER: Empress Liquids
 164S Salvage

DATE: 2026-03-26



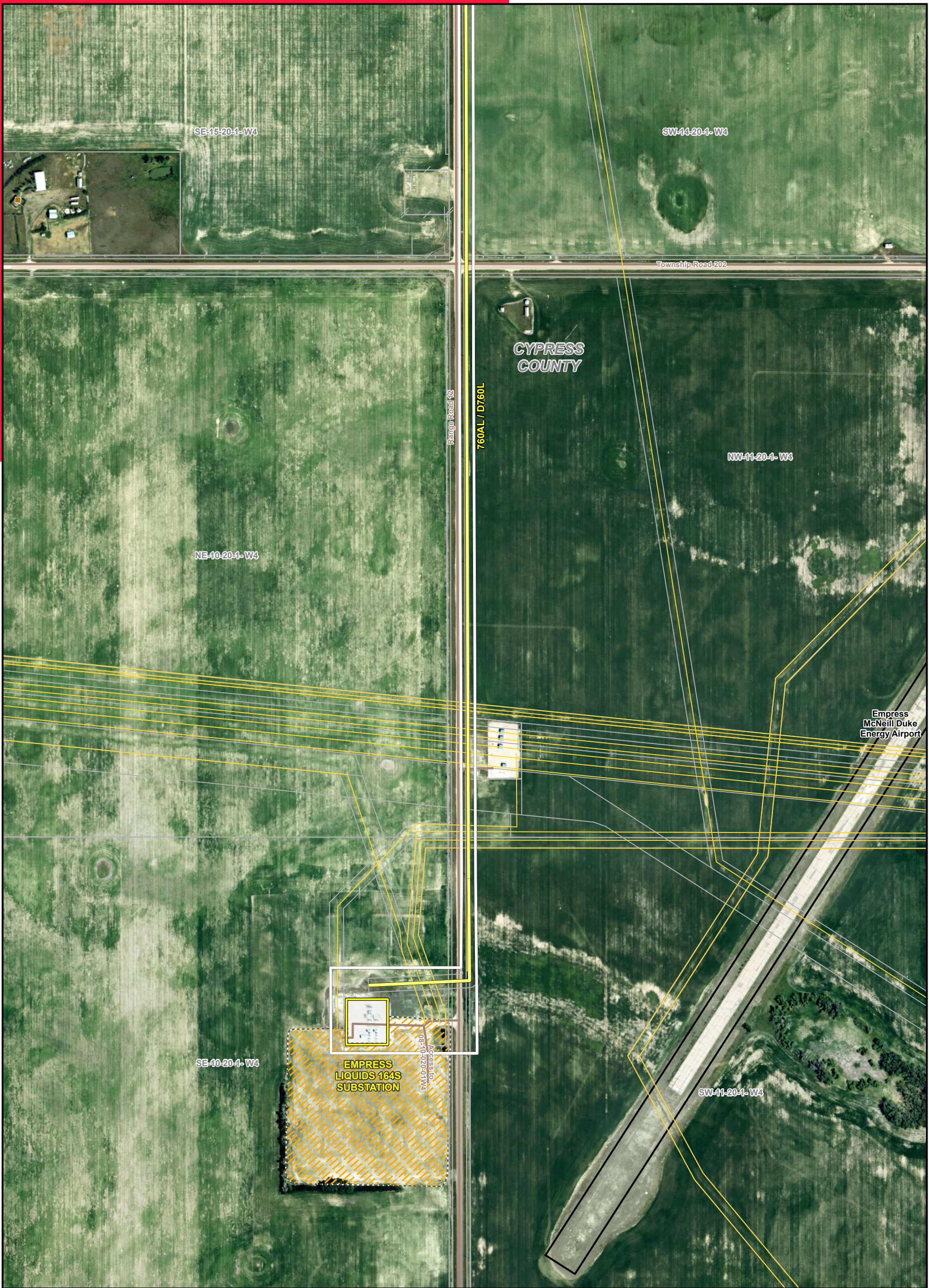
Service Layer Credits: Source: Source: Esri, Vantor, Earthstar Geographics, and the GIS User Community
 Although there is no reason to believe that there are any errors associated with the data used to generate
 this product or in the product itself, users of these data are advised that errors in the data may be present.

STRIP MOSAIC SM1



PROPOSED

**Empress Liquids 164S Salvage,
 760AL and D760L Partial Salvage**

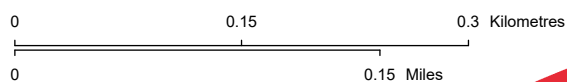


LEGEND

- Proposed Structure Modification
- Pipeline
- Proposed Salvage of Existing Transmission Line
- Road
- - - Existing Transmission Line
- Airport
- Proposed Salvage of Existing Substation
- Oil and Gas Plant
- - - Access Trail
- Construction Workspace
- Residence

NO: 35039618
 DRAWN: SG - AL
 FILE NO.: XXXXXXX
 REVISION: 0.00.00
 AL FOLDER: Empress Liquids
 164S Salvage

DATE: 2026-03-26



Service Layer Credits: Source: Source: Esri, Vantor, Earthstar Geographics, and the GIS User Community
 Although there is no reason to believe that there are any errors associated with the data used to generate
 this product or in the product itself, users of these data are advised that errors in the data may be present.

STRIP MOSAIC SM2



PROPOSED

**Empress Liquids 164S Salvage,
 760AL and D760L Partial Salvage**