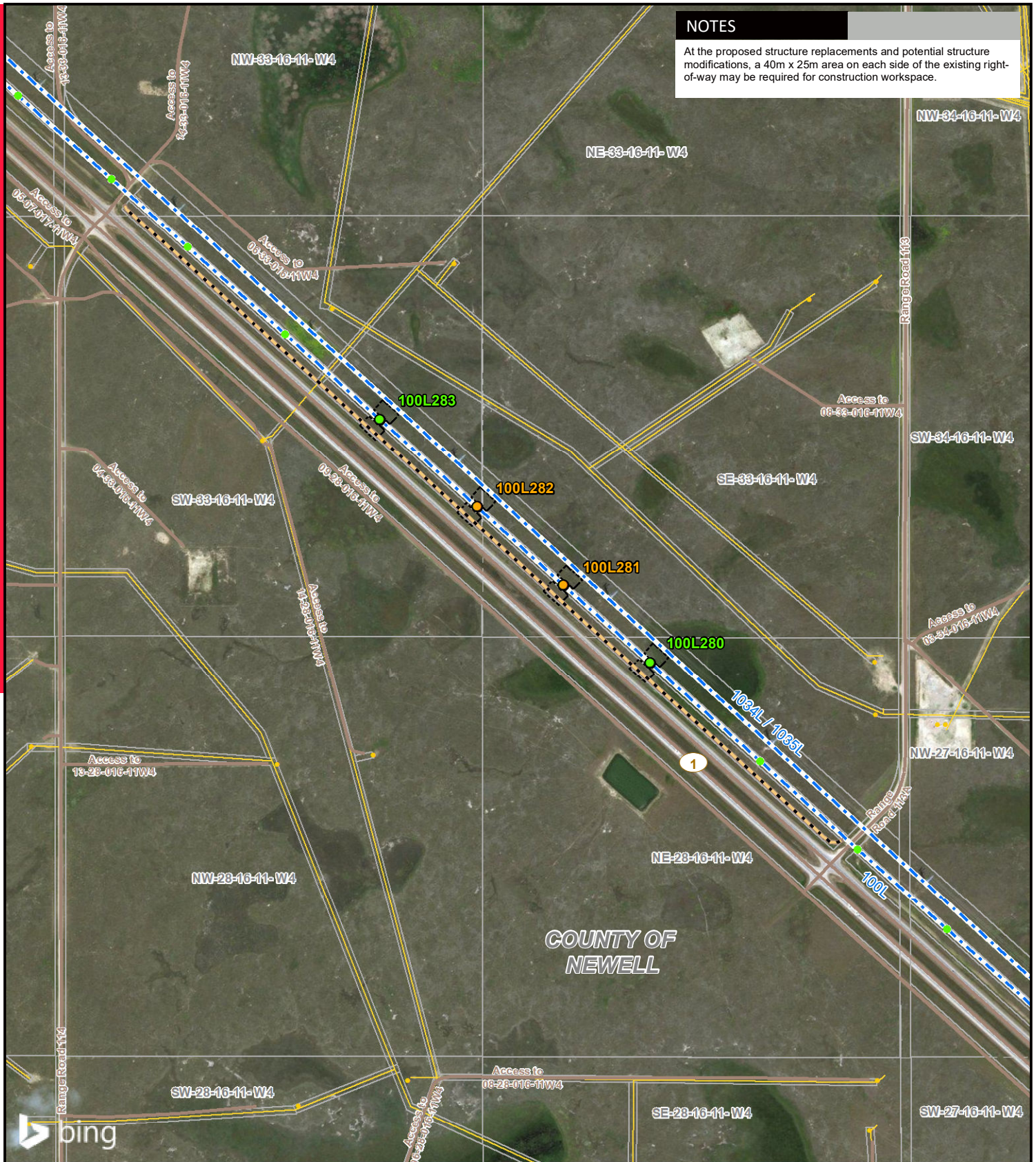


NOTES

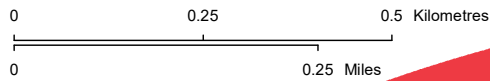
At the proposed structure replacements and potential structure modifications, a 40m x 25m area on each side of the existing right-of-way may be required for construction workspace.



LEGEND

- Potential Structure Modification
- Proposed Structure Replacement
- Existing Structure
- Existing Transmission Line
- 8m Wide Access Trail
- Construction Workspace
- Wellsite
- Pipeline
- Road

NO: 35023529 - 6201
 DRAWN: SG - AL
 FILE NO.: XXXXXXX
 REVISION: 0.01.06
 AL FOLDER: HEP Solar Generation Interconnection
DATE: 2023-02-16



Service Layer Credits: © 2022 Microsoft Corporation © 2022 Maxar ©CNES (2022) Distribution Airbus DS
 Although there is no reason to believe that there are any errors associated with the data used to generate this product or in the product itself, users of these data are advised that errors in the data may be present.

DETAIL PHOTO DP3



PROPOSED
 hep Alderson Solar Power
 Connection Project