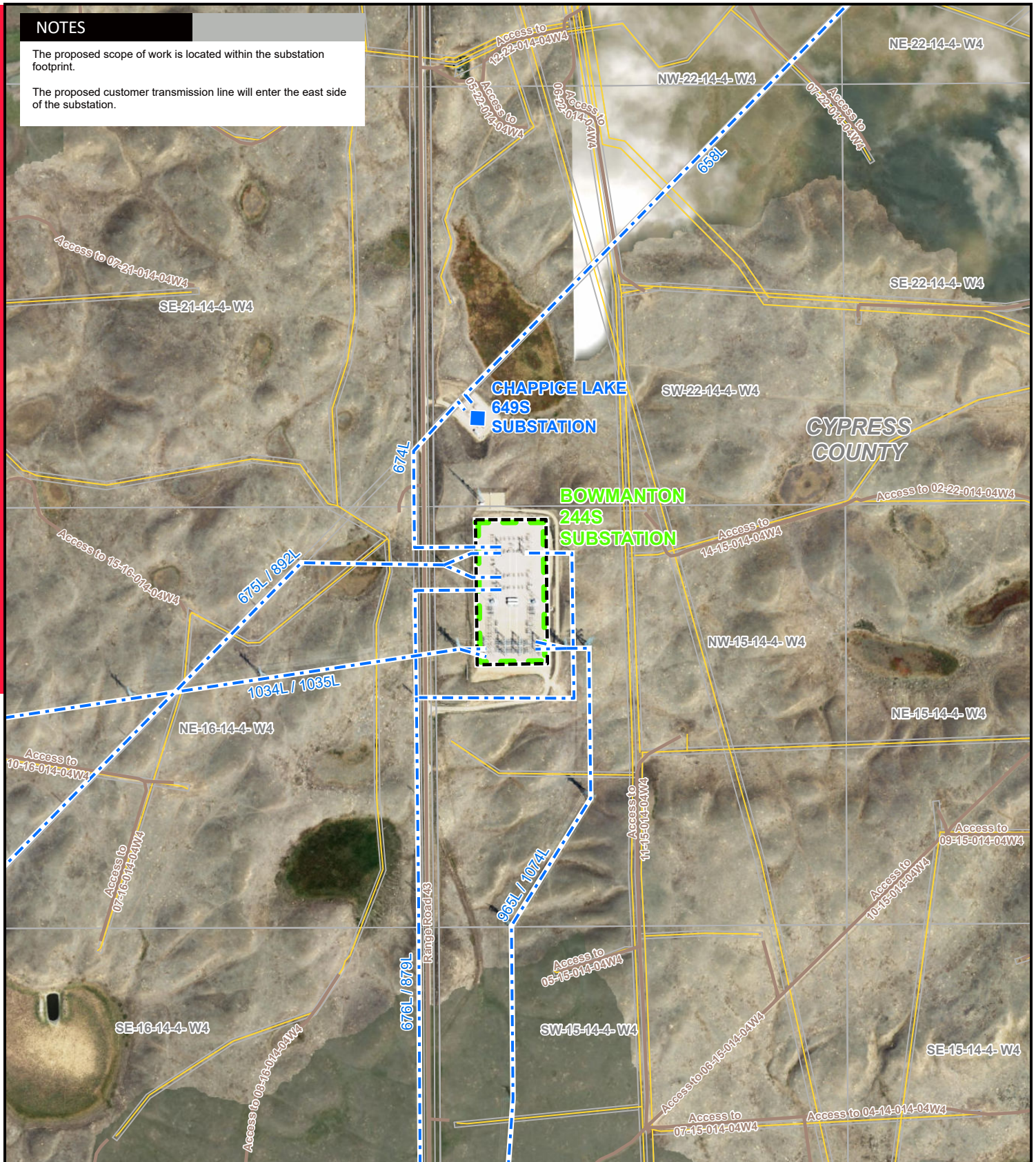


NOTES

The proposed scope of work is located within the substation footprint.

The proposed customer transmission line will enter the east side of the substation.

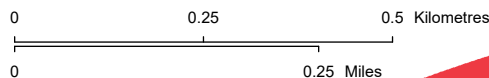


LEGEND

- Existing Substation
- - - Existing Transmission Line
- Proposed Upgrade to Existing Substation
- Pipeline
- Road

NO: 35034081-6103
 DRAWN: SG - AL
 FILE NO: XXXXXXXX
 REVISION: 0.00.00
 AL FOLDER: Enfinite Bowmanton
 MPC Battery

DATE: 2025-10-08



DETAIL PHOTO DP1



PROPOSED

**Hutchison Battery Storage
 Facility Connection Project**

Source: Esri, Maxar, Earthstar Geographics, and the GIS User Community
 Although there is no reason to believe that there are any errors associated with the data used to generate this product or in the product itself, users of these data are advised that errors in the data may be present.