

LEGEND

	Map Sheet		First Nations Reserve
	Existing Substation		Park / Other Protected Area
	Existing Transmission Line		Urban Area
	Road		Water Body
	River or Stream		

NO.: DRAWN: ST - DS
 FILE NO.: 123512768-0001
 REVISION: 0.00.00.00
 AL FOLDER: 1201L Intertie Restoration
 DATE: 2018-08-28

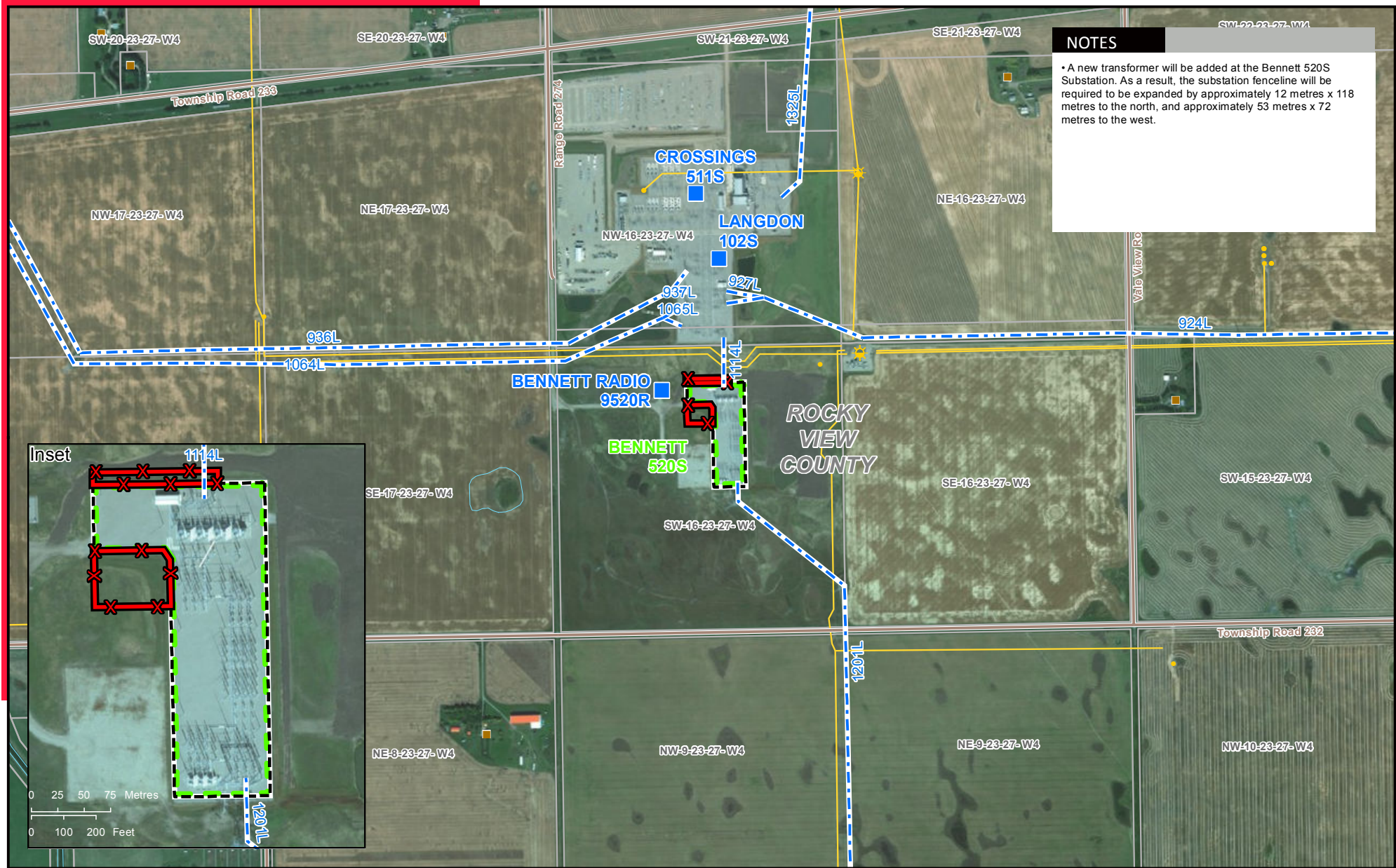
0 5 10 15 20 25 Kilometres
 0 5 10 15 Miles

DETAIL PHOTO INDEX **DPI**

A BERKSHIRE HATHAWAY ENERGY COMPANY

Although there is no reason to believe that there are any errors associated with the data used to generate this product or in the product itself, users of these data are advised that errors in the data may be present.

POTENTIAL
 Alberta - British Columbia Intertie Restoration Project



NOTES

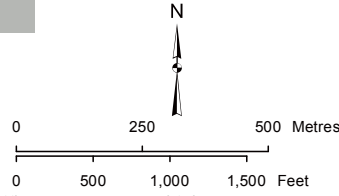
- A new transformer will be added at the Bennett 520S Substation. As a result, the substation fenceline will be required to be expanded by approximately 12 metres x 118 metres to the north, and approximately 53 metres x 72 metres to the west.



LEGEND

- Existing Substation
- Existing Transmission Line
- ✕ Potential Upgrade To Existing Substation
- ✕ Existing Bennett Substation
- ☀ Facility
- Oil or Gas Well
- Residence
- Pipeline
- ✕ Municipal or County Boundary
- ✕ Water Body

NO.:
 DRAWN: ST - DS
 FILE NO.: 123512768-0002
 REVISION: 0.00.00
 AL FOLDER: 1201L Intertie Restoration
 DATE: 2018-09-10

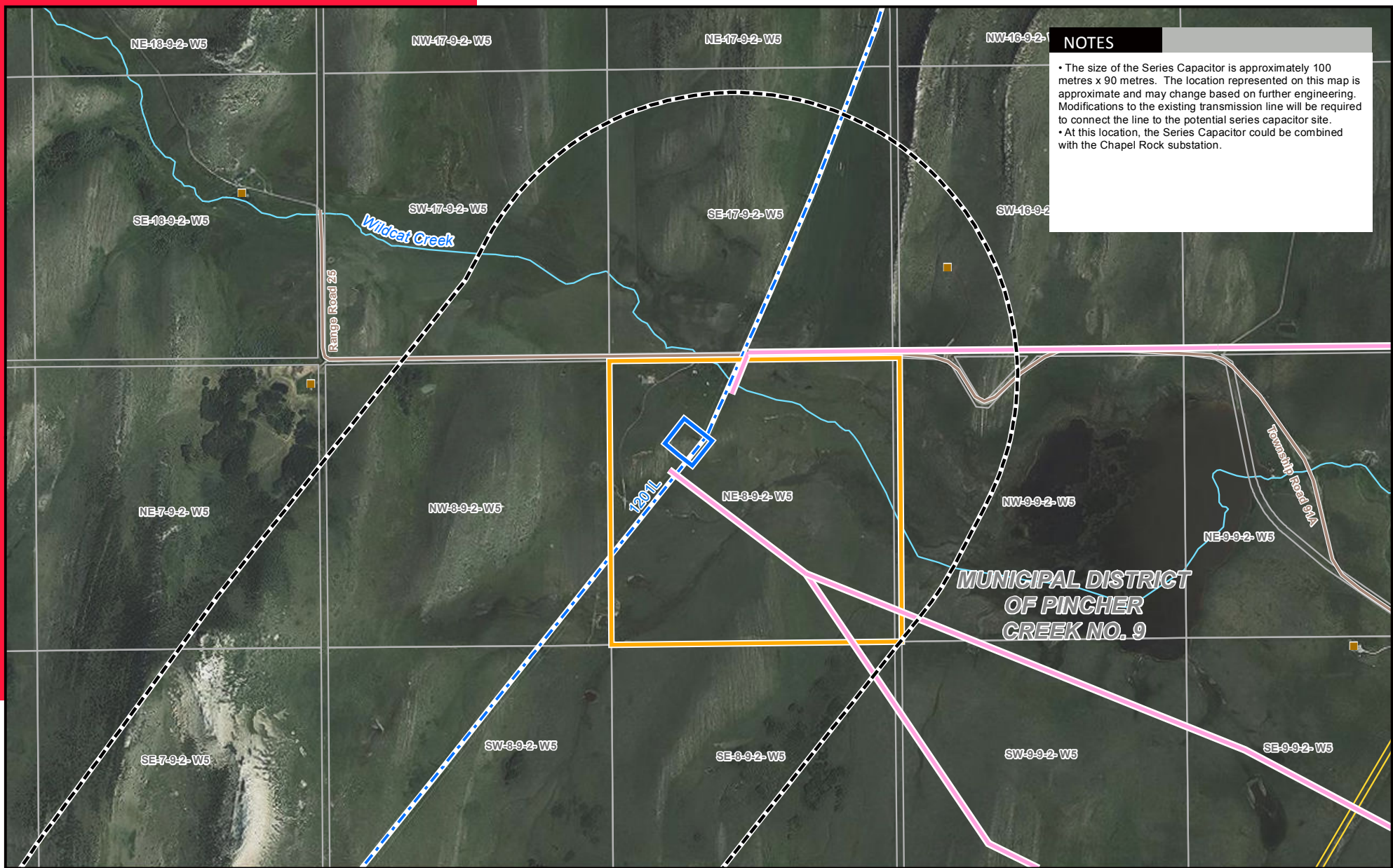


Although there is no reason to believe that there are any errors associated with the data used to generate this product or in the product itself, users of these data are advised that errors in the data may be present. Photography: Source: Esri, DigitalGlobe, GeoEye, Earthstar Geographics, CNES/Airbus DS, USDA, USGS, AEX, Getmapping, Aerogrid, IGN, IGP, swisstopo, and the GIS User Community

DETAIL PHOTO DP1

POTENTIAL

Alberta - British Columbia Intertie Restoration Project



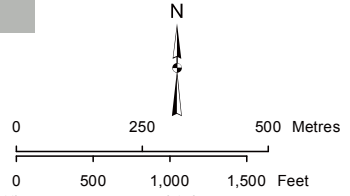
NOTES

- The size of the Series Capacitor is approximately 100 metres x 90 metres. The location represented on this map is approximate and may change based on further engineering. Modifications to the existing transmission line will be required to connect the line to the potential series capacitor site.
- At this location, the Series Capacitor could be combined with the Chapel Rock substation.

LEGEND

- Existing Transmission Line
- Potential Series Capacitor Target Area
- Study Area
- Oil or Gas Well
- Residence
- Pipeline
- River or Stream
- Municipal or County Boundary
- Other AltaLink Project**
 - Chapel Rock to Pincher Creek Area
 - Potential Transmission Line Alignment
 - Chapel Rock to Pincher Creek Area
 - Potential Substation Target Area

NO.:
 DRAWN: ST - DS
 FILE NO.: 123512768-0002
 REVISION: 0.00.00
 AL FOLDER: 1201L Intertie Restoration
 DATE: 2018-09-10



Although there is no reason to believe that there are any errors associated with the data used to generate this product or in the product itself, users of these data are advised that errors in the data may be present. Photography: Source: Esri, DigitalGlobe, GeoEye, Earthstar Geographics, CNES/Airbus DS, USDA, USGS, AEX, Getmapping, Aerogrid, IGN, IGP, swisstopo, and the GIS User Community

DETAIL PHOTO DP2

POTENTIAL

Alberta - British Columbia Intertie Restoration Project



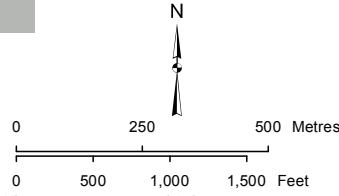
NOTES

- The size of the Series Capacitor is approximately 100 metres x 90 metres. The location represented on this map is approximate and may change based on further engineering. Modifications to the existing transmission line will be required to connect the line to the potential series capacitor site.
- In order to reduce the overall height of the telecommunication tower, a separate telecommunication tower site will be required. The potential site would be located on top of the ridge to the southwest of the potential substation target area and will be approximately 16m x 21m.
- At this location, the Series Capacitor could be combined with the Chapel Rock substation.

LEGEND

- Existing Transmission Line
- Potential Telecommunication Tower Site
- Potential Series Capacitor Target Area
- Study Area
- Facility
- Hamlet or Locality
- Oil or Gas Well
- Residence
- Pipeline
- Municipal or County Boundary
- Water Body
- Other AltaLink Project**
 - Chapel Rock to Pincher Creek Area
 - Potential Transmission Line Alignment
 - Chapel Rock to Pincher Creek Area
 - Potential Substation Target Area

NO.:
 DRAWN: ST - DS
 FILE NO.: 123512768-0002
 REVISION: 0.00.00
 AL FOLDER: 1201L Intertie Restoration
 DATE: 2018-09-10



Although there is no reason to believe that there are any errors associated with the data used to generate this product or in the product itself, users of these data are advised that errors in the data may be present. Photography: Source: Esri, DigitalGlobe, GeoEye, Earthstar Geographics, CNES/Airbus DS, USDA, USGS, AEX, Getmapping, Aerogrid, IGN, IGP, swisstopo, and the GIS User Community

DETAIL PHOTO **DP3**

A BERKSHIRE HATHAWAY ENERGY COMPANY

POTENTIAL

Alberta - British Columbia Intertie Restoration Project



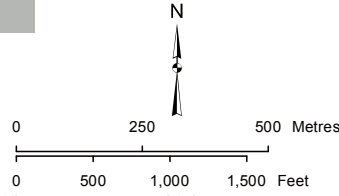
NOTES

- The size of the Series Capacitor is approximately 100 metres x 90 metres. The location represented on this map is approximate and may change based on further engineering. Modifications to the existing transmission line will be required to connect the line to the potential series capacitor site.

LEGEND

- Existing Transmission Line
- Potential Series Capacitor Target Area
- Study Area
- Residence
- Municipal or County Boundary

NO.:
 DRAWN: ST - DS
 FILE NO.: 123512768-0002
 REVISION: 0.00.00
 AL FOLDER: 1201L Intertie Restoration
 DATE: 2018-09-10



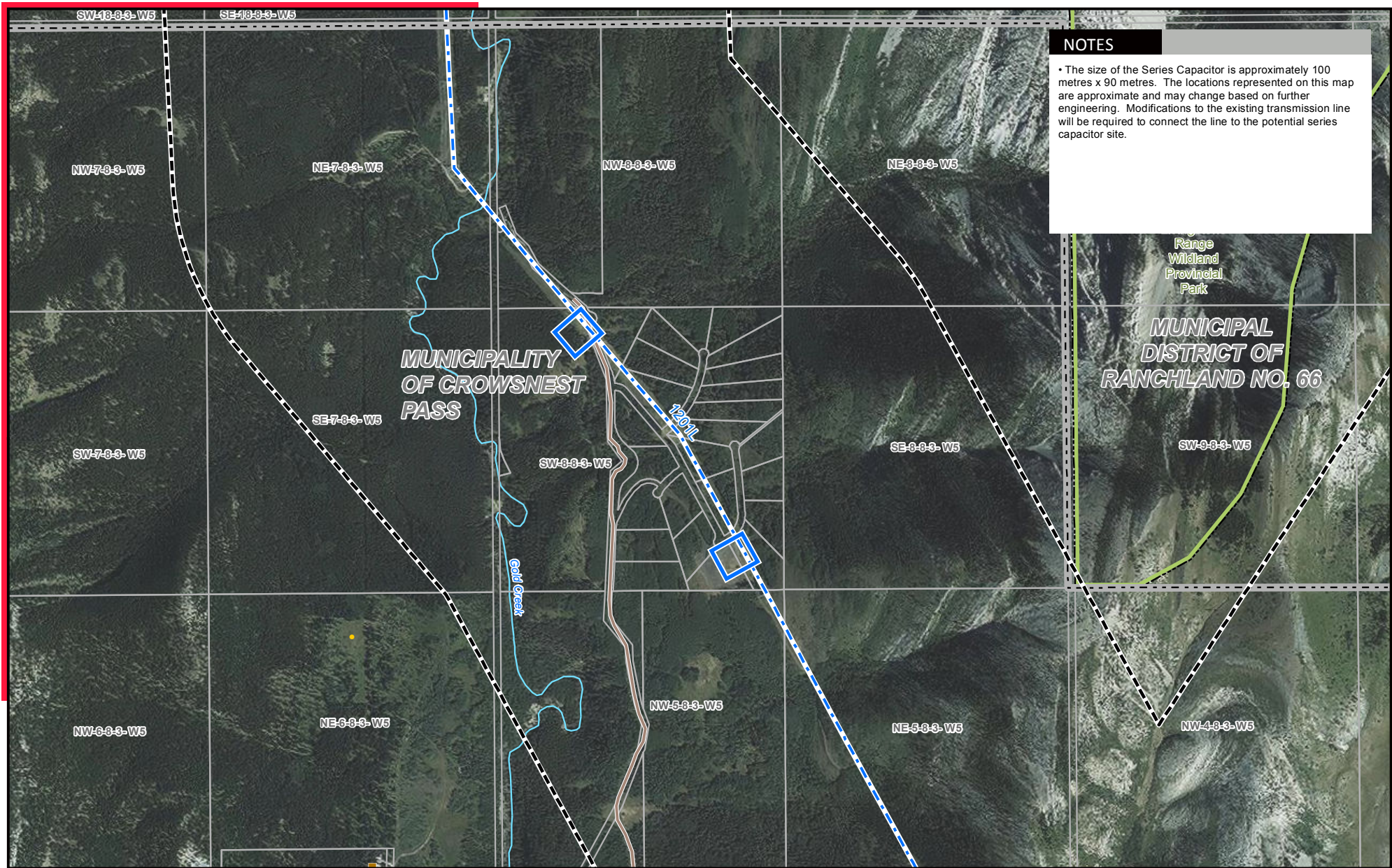
Although there is no reason to believe that there are any errors associated with the data used to generate this product or in the product itself, users of these data are advised that errors in the data may be present. Photography: Source: Esri, DigitalGlobe, GeoEye, Earthstar Geographics, CNES/Airbus DS, USDA, USGS, AEX, Getmapping, Aerogrid, IGN, IGP, swisstopo, and the GIS User Community

DETAIL PHOTO **DP4**

A BERKSHIRE HATHAWAY ENERGY COMPANY

POTENTIAL

Alberta - British Columbia Intertie Restoration Project

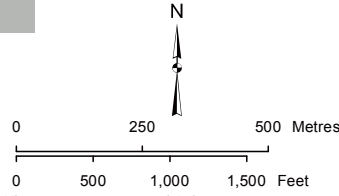


NOTES

- The size of the Series Capacitor is approximately 100 metres x 90 metres. The locations represented on this map are approximate and may change based on further engineering. Modifications to the existing transmission line will be required to connect the line to the potential series capacitor site.

- LEGEND**
- Existing Transmission Line
 - Potential Series Capacitor Target Area
 - Study Area
 - Oil or Gas Well
 - Residence
 - River or Stream
 - Municipal or County Boundary
 - Park / Other Protected Area

NO.:
 DRAWN: ST - DS
 FILE NO.: 123512768-0002
 REVISION: 0.00.00
 AL FOLDER: 1201L Intertie Restoration
 DATE: 2018-09-10



DETAIL PHOTO **DP5**

A BERKSHIRE HATHAWAY ENERGY COMPANY

POTENTIAL

Alberta - British Columbia Intertie Restoration Project

Although there is no reason to believe that there are any errors associated with the data used to generate this product or in the product itself, users of these data are advised that errors in the data may be present. Photography: Source: Esri, DigitalGlobe, GeoEye, Earthstar Geographics, CNES/Airbus DS, USDA, USGS, AEX, Getmapping, Aerogrid, IGN, IGP, swisstopo, and the GIS User Community