

LEGEND

- Point Designation
- ▲ Potential Telecommunication Tower
- Potential Transmission Line
- - - Existing Transmission Line
- Potential Right of Way Boundary
- ▭ Proposed Customer Power Plant Fenceline
- ▭ Proposed Customer Substation
- ▭ Mapsheet
- Residence
- Road
- ▭ Municipal or County Boundary
- ▭ Urban Area

NO: 35036544 - 6103
 DRAWN: SG - AL
 FILE NO.: XXXXXXXX
 REVISION: 0.01.02
 AL FOLDER: Legal Solar Battery Connection
DATE: 2025-12-03

0 1 2 Kilometers
 0 1 Miles

Although there is no reason to believe that there are any errors associated with the data used to generate this product or in the product itself, users of these data are advised that errors in the data may be present.

STRIP INDEX **SI**

ALTALINK.

POTENTIAL

Legal Solar Battery Connection

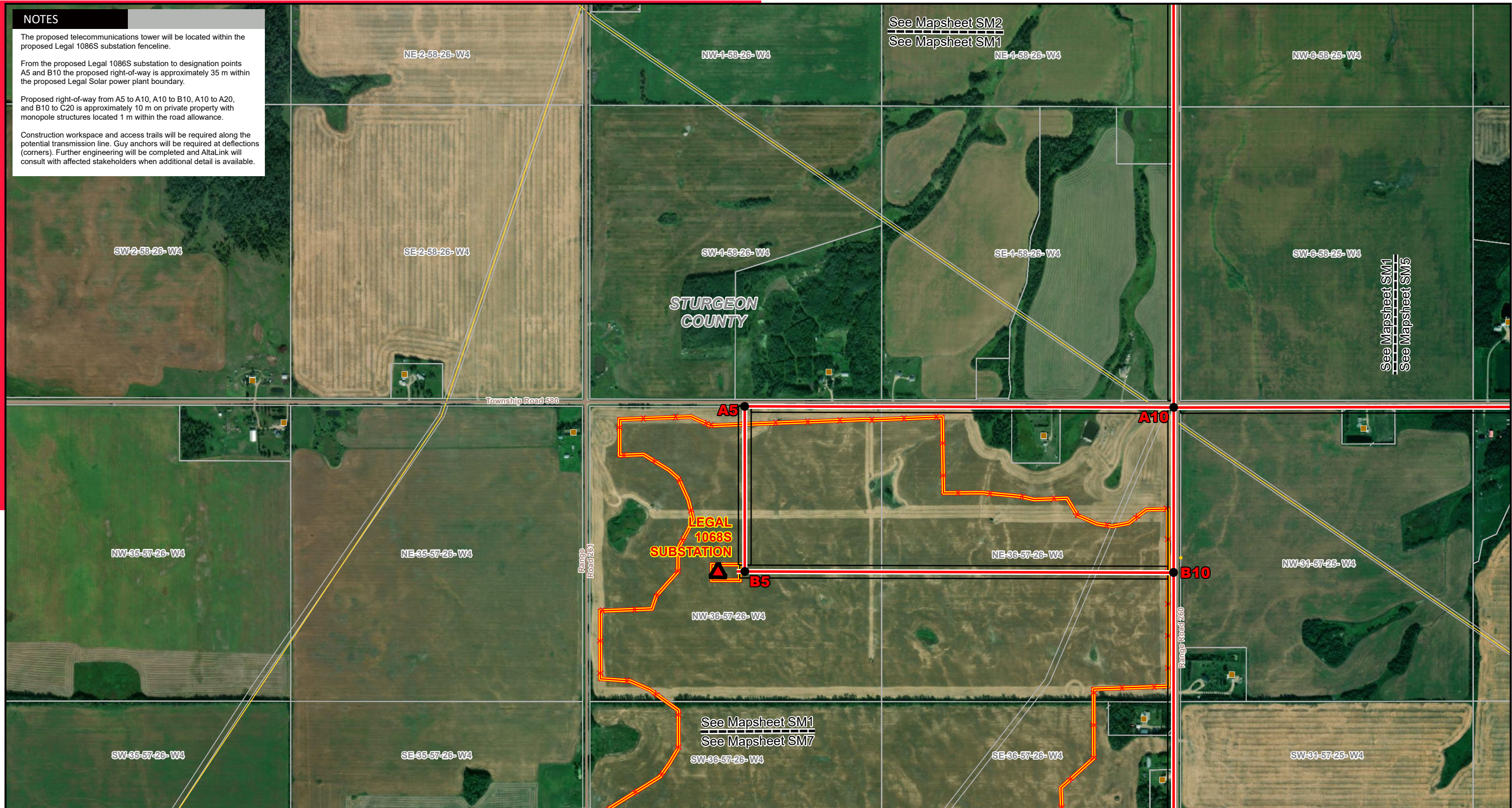
NOTES

The proposed telecommunications tower will be located within the proposed Legal 1086S substation fence line.

From the proposed Legal 1086S substation to designation points A5 and B10 the proposed right-of-way is approximately 35 m within the proposed Legal Solar power plant boundary.

Proposed right-of-way from A5 to A10, A10 to B10, and B10 to C20 is approximately 10 m on private property with monopole structures located 1 m within the road allowance.

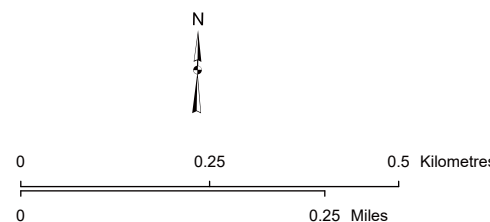
Construction workspace and access trails will be required along the potential transmission line. Guy anchors will be required at deflections (corners). Further engineering will be completed and AltaLink will consult with affected stakeholders when additional detail is available.



LEGEND

- Point Designation
- Residence
- Wellsite
- Potential Telecommunication Tower
- Pipeline
- Potential Transmission Line
- Road
- Existing Transmission Line
- Municipal or County Boundary
- Potential Right of Way Boundary
- Urban Area
- Proposed Customer Power Plant Fenceline
- Proposed Customer Substation Target Area

NO: 35036544 - 6103
 DRAWN: SG - AL
 FILE NO.: XXXXXXX
 REVISION: 0.01.02
 AL FOLDER: Legal Solar
 Battery Connection
DATE: 2025-12-03



STRIP MOSAIC **SM1**



POTENTIAL

Legal Solar Battery Connection

*Service Layer Credits: Source: Esri, Maxar, Earthstar Geographics, and the GIS User Community
 Although there is no reason to believe that there are any errors associated with the data used to generate this product or in the product itself, users of these data are advised that errors in the data may be present.*

NOTES

Proposed right-of-way from A10 to A20 is approximately 10 m on private property with monopole structures located 1 m within the road allowance.

Proposed right-of-way from A20 to A100 is 35 m with H-frame structures straddling the quarter line (17.5 m right-of-way on either side of the quarter line).

Construction workspace and access trails will be required along the potential transmission line. Guy anchors will be required at deflections (corners). Further engineering will be completed and AltaLink will consult with affected stakeholders when additional detail is available.

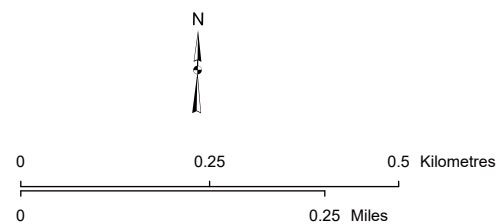
See Mapsheet SM2
See Mapsheet SM3



LEGEND

- Point Designation
- Residence
- Wellsite
- Potential Telecommunication Tower
- Pipeline
- Potential Transmission Line
- Road
- Existing Transmission Line
- Municipal or County Boundary
- Potential Right of Way Boundary
- Urban Area
- Proposed Customer Power Plant Fenceline
- Proposed Customer Substation Target Area

NO: 35036544 - 6103
DRAWN: SG - AL
FILE NO.: XXXXXX
REVISION: 0.01.02
AL FOLDER: Legal Solar
Battery Connection
DATE: 2025-12-03



*Service Layer Credits: Source: Esri, Maxar, Earthstar Geographics, and the GIS User Community
Although there is no reason to believe that there are any errors associated with the data used to generate this product or in the product itself, users of these data are advised that errors in the data may be present.*

STRIP MOSAIC **SM2**



POTENTIAL

Legal Solar Battery Connection



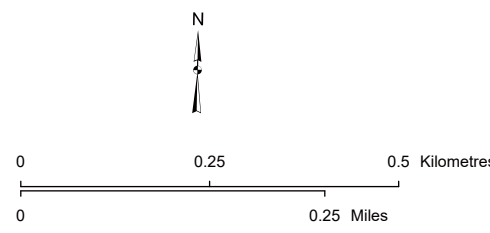
NOTES

Proposed right-of-way from A20 to A100 is 35 m with H-frame structures straddling the quarter line (17.5 m right-of-way on either side of the quarter line).

Construction workspace and access trails will be required along the potential transmission line. Guy anchors will be required at deflections (corners). Further engineering will be completed and AltaLink will consult with affected stakeholders when additional detail is available.

- LEGEND**
- Point Designation
 - ▲ Potential Telecommunication Tower
 - Potential Transmission Line
 - - - Existing Transmission Line
 - Potential Right of Way Boundary
 - ▭ Proposed Customer Power Plant Fenceline
 - ▭ Proposed Customer Substation Target Area
 - Residence
 - Wellsite
 - Pipeline
 - Road
 - ▭ Municipal or County Boundary
 - ▭ Urban Area

NO: 35036544 - 6103
 DRAWN: SG - AL
 FILE NO.: XXXXXX
 REVISION: 0.01.02
 AL FOLDER: Legal Solar
 Battery Connection
DATE: 2025-12-03



*Service Layer Credits: Source: Esri, Maxar, Earthstar Geographics, and the GIS User Community
 Although there is no reason to believe that there are any errors associated with the data used to generate this product or in the product itself, users of these data are advised that errors in the data may be present.*

STRIP MOSAIC SM3

ALITALINK

POTENTIAL

Legal Solar Battery Connection

NOTES

Proposed right-of-way from A20 to A100 is 35 m with H-frame structures straddling the quarter line (17.5 m right-of-way on either side of the quarter line).

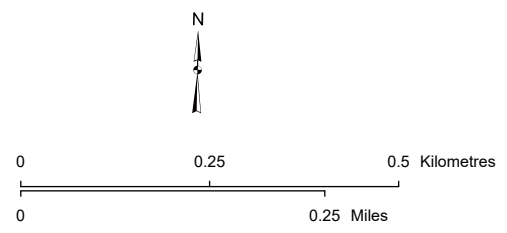
Construction workspace and access trails will be required along the potential transmission line. Guy anchors will be required at deflections (corners). Further engineering will be completed and AltaLink will consult with affected stakeholders when additional detail is available.



LEGEND

- Point Designation
- ▲ Potential Telecommunication Tower
- Potential Transmission Line
- - - Existing Transmission Line
- Potential Right of Way Boundary
- ▭ Proposed Customer Power Plant Fenceline
- ▭ Proposed Customer Substation Target Area
- Residence
- Wellsite
- Pipeline
- Road
- ▭ Municipal or County Boundary
- ▭ Urban Area

NO: 35036544 - 6103
 DRAWN: SG - AL
 FILE NO.: XXXXXXX
 REVISION: 0.01.02
 AL FOLDER: Legal Solar
 Battery Connection
DATE: 2025-12-03



*Service Layer Credits: Source: Esri, Maxar, Earthstar Geographics, and the GIS User Community
 Although there is no reason to believe that there are any errors associated with the data used to generate this product or in the product itself, users of these data are advised that errors in the data may be present.*

STRIP MOSAIC **SM4**



POTENTIAL

Legal Solar Battery Connection

NOTES

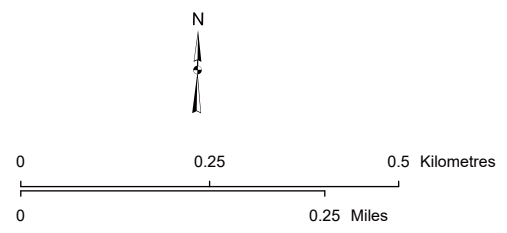
Proposed right-of-way from A10 to B80 to B100 is approximately 10 m on private property with monopole structures located 1 m within the road allowance.

Construction workspace and access trails will be required along the potential transmission line. Guy anchors will be required at deflections (corners). Further engineering will be completed and AltaLink will consult with affected stakeholders when additional detail is available.



- LEGEND**
- Point Designation
 - ▲ Potential Telecommunication Tower
 - Potential Transmission Line
 - - - Existing Transmission Line
 - Potential Right of Way Boundary
 - ▭ Proposed Customer Power Plant Fenceline
 - ▭ Proposed Customer Substation Target Area
 - Residence
 - Wellsite
 - Pipeline
 - Road
 - ▭ Municipal or County Boundary
 - ▭ Urban Area

NO: 35036544 - 6103
 DRAWN: SG - AL
 FILE NO.: XXXXXX
 REVISION: 0.01.02
 AL FOLDER: Legal Solar
 Battery Connection
DATE: 2025-12-03



STRIP MOSAIC SM5



POTENTIAL

Legal Solar Battery Connection

*Service Layer Credits: Source: Esri, Maxar, Earthstar Geographics, and the GIS User Community
 Although there is no reason to believe that there are any errors associated with the data used to generate this product or in the product itself, users of these data are advised that errors in the data may be present.*

NOTES

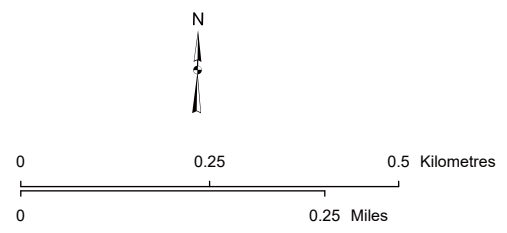
Proposed right-of-way from A10 to B80 to B100, and from C80 to B80 is approximately 10 m on private property with monopole structures located 1 m within the road allowance.

Construction workspace and access trails will be required along the potential transmission line. Guy anchors will be required at deflections (corners). Further engineering will be completed and AltaLink will consult with affected stakeholders when additional detail is available.



- LEGEND**
- Point Designation
 - ▲ Potential Telecommunication Tower
 - Potential Transmission Line
 - - - Existing Transmission Line
 - Potential Right of Way Boundary
 - ▭ Proposed Customer Power Plant Fenceline
 - ▭ Proposed Customer Substation Target Area
 - Residence
 - Wellsite
 - Pipeline
 - Road
 - ▭ Municipal or County Boundary
 - ▭ Urban Area

NO: 35036544 - 6103
 DRAWN: SG - AL
 FILE NO.: XXXXXX
 REVISION: 0.01.02
 AL FOLDER: Legal Solar
 Battery Connection
DATE: 2025-12-03



STRIP MOSAIC **SM6**



POTENTIAL

Legal Solar Battery Connection

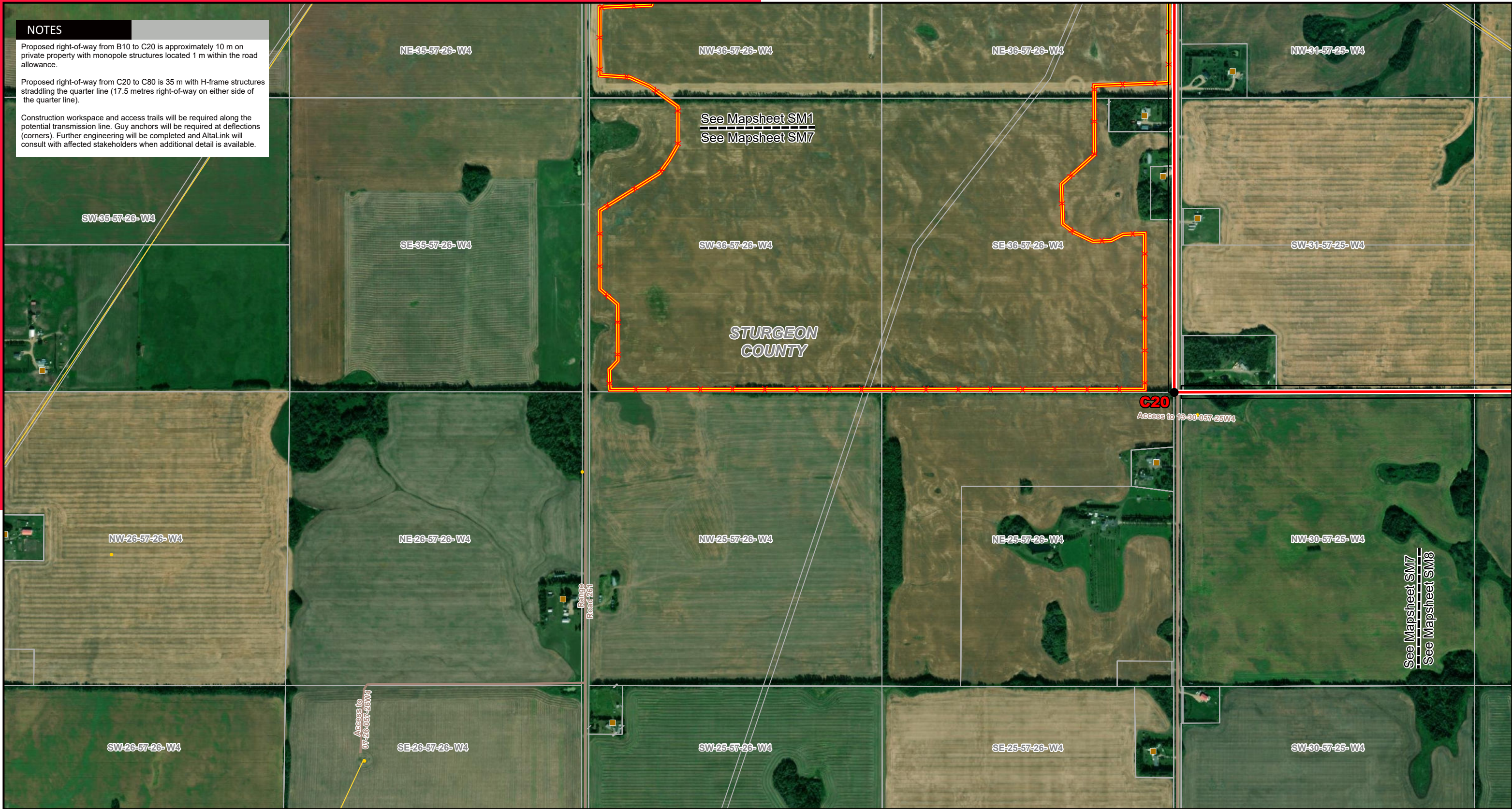
*Service Layer Credits: Source: Esri, Maxar, Earthstar Geographics, and the GIS User Community
 Although there is no reason to believe that there are any errors associated with the data used to generate this product or in the product itself, users of these data are advised that errors in the data may be present.*

NOTES

Proposed right-of-way from B10 to C20 is approximately 10 m on private property with monopole structures located 1 m within the road allowance.

Proposed right-of-way from C20 to C80 is 35 m with H-frame structures straddling the quarter line (17.5 metres right-of-way on either side of the quarter line).

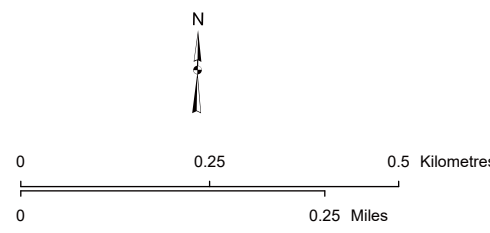
Construction workspace and access trails will be required along the potential transmission line. Guy anchors will be required at deflections (corners). Further engineering will be completed and AltaLink will consult with affected stakeholders when additional detail is available.



LEGEND

- Point Designation
- ▲ Potential Telecommunication Tower
- Potential Transmission Line
- - - Existing Transmission Line
- Potential Right of Way Boundary
- Proposed Customer Power Plant Fenceline
- Proposed Customer Substation Target Area
- Residence
- Wellsite
- Pipeline
- Road
- ▭ Municipal or County Boundary
- ▭ Urban Area

NO: 35036544 - 6103
 DRAWN: SG - AL
 FILE NO.: XXXXXXX
 REVISION: 0.01.02
 AL FOLDER: Legal Solar
 Battery Connection
DATE: 2025-12-03



STRIP MOSAIC **SM7**



POTENTIAL

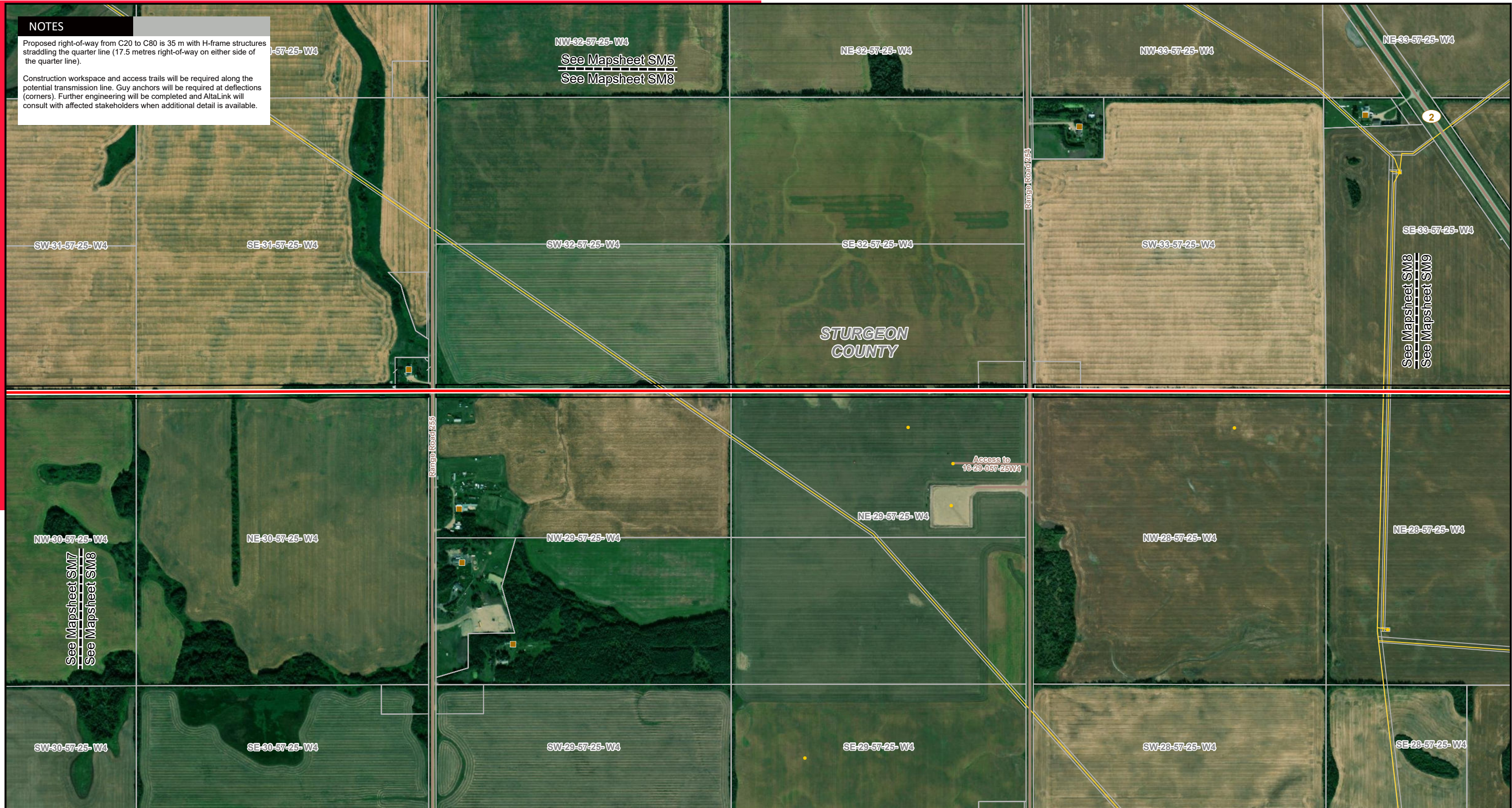
Legal Solar Battery Connection

*Service Layer Credits: Source: Esri, Maxar, Earthstar Geographics, and the GIS User Community
 Although there is no reason to believe that there are any errors associated with the data used to generate this product or in the product itself, users of these data are advised that errors in the data may be present.*

NOTES

Proposed right-of-way from C20 to C80 is 35 m with H-frame structures straddling the quarter line (17.5 metres right-of-way on either side of the quarter line).

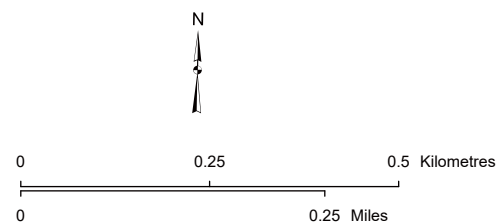
Construction workspace and access trails will be required along the potential transmission line. Guy anchors will be required at deflections (corners). Further engineering will be completed and AltaLink will consult with affected stakeholders when additional detail is available.



LEGEND

- Point Designation
- ▲ Potential Telecommunication Tower
- Potential Transmission Line
- - - Existing Transmission Line
- Potential Right of Way Boundary
- ▭ Proposed Customer Power Plant Fenceline
- ▭ Proposed Customer Substation Target Area
- Residence
- Wellsite
- Pipeline
- Road
- ▭ Municipal or County Boundary
- ▭ Urban Area

NO: 35036544 - 6103
 DRAWN: SG - AL
 FILE NO.: XXXXXX
 REVISION: 0.01.02
 AL FOLDER: Legal Solar
 Battery Connection
DATE: 2025-12-03



STRIP MOSAIC **SM8**



POTENTIAL

Legal Solar Battery Connection

*Service Layer Credits: Source: Esri, Maxar, Earthstar Geographics, and the GIS User Community
 Although there is no reason to believe that there are any errors associated with the data used to generate this product or in the product itself, users of these data are advised that errors in the data may be present.*

NOTES

Proposed right-of-way from C80 to B80 is approximately 10 m on private property with monopole structures located 1 m within the road allowance.

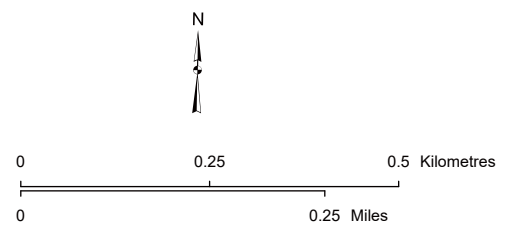
Proposed right-of-way from C20 to C80 is 35 m with H-frame structures straddling the quarter line (17.5 metres right-of-way on either side of the quarter line).

Construction workspace and access trails will be required along the potential transmission line. Guy anchors will be required at deflections (corners). Further engineering will be completed and AltaLink will consult with affected stakeholders when additional detail is available.



- LEGEND**
- Point Designation
 - ▲ Potential Telecommunication Tower
 - Potential Transmission Line
 - - - Existing Transmission Line
 - Potential Right of Way Boundary
 - ▭ Proposed Customer Power Plant Fenceline
 - ▭ Proposed Customer Substation Target Area
 - Residence
 - Wellsite
 - Pipeline
 - Road
 - ▭ Municipal or County Boundary
 - ▭ Urban Area

NO: 35036544 - 6103
 DRAWN: SG - AL
 FILE NO.: XXXXXXX
 REVISION: 0.01.02
 AL FOLDER: Legal Solar
 Battery Connection
DATE: 2025-12-03



*Service Layer Credits: Source: Esri, Maxar, Earthstar Geographics, and the GIS User Community
 Although there is no reason to believe that there are any errors associated with the data used to generate this product or in the product itself, users of these data are advised that errors in the data may be present.*

STRIP MOSAIC SM9



POTENTIAL

Legal Solar Battery Connection