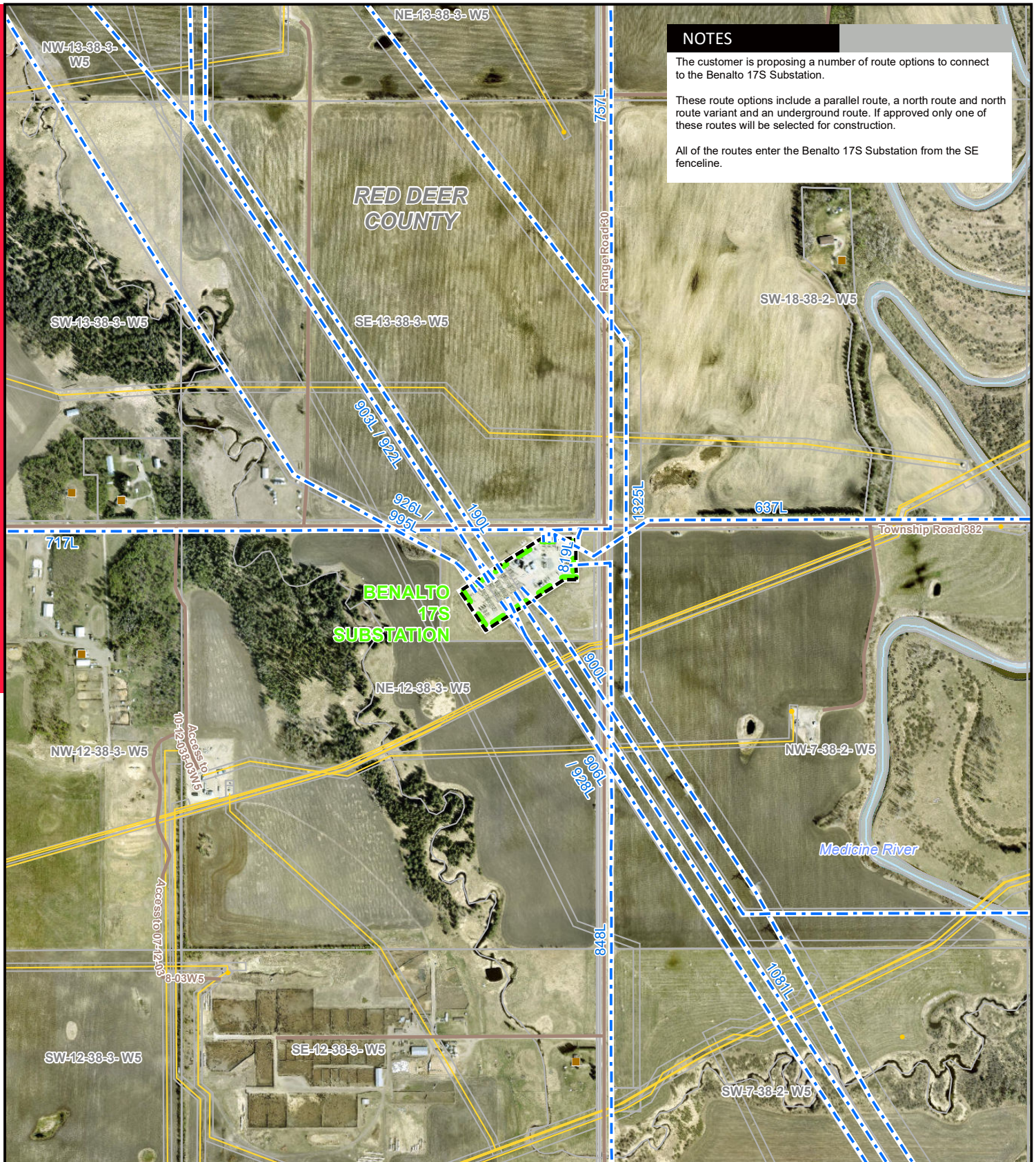


NOTES

The customer is proposing a number of route options to connect to the Benalto 17S Substation.

These route options include a parallel route, a north route and north route variant and an underground route. If approved only one of these routes will be selected for construction.

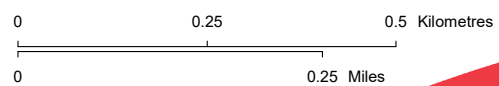
All of the routes enter the Benalto 17S Substation from the SE fenceline.



LEGEND

- Existing Transmission Line
- Proposed Upgrade to Existing Substation
- Residence
- Wellsite
- Pipeline
- Road
- Water Body

NO: 35035207 - 6120
 DRAWN: SG - AL
 FILE NO.: XXXXXXX
 REVISION: 0.00.00
 AL FOLDER: Little_Flippi_Gas
 Generation_Connection
DATE: 2025-02-28



DETAIL PHOTO DP1



PROPOSED

Little Flippi Generation Connection Project

Service Layer Credits: Source: Esri, Maxar, Earthstar Geographics, and the GIS User Community
 Although there is no reason to believe that there are any errors associated with the data used to generate this product or in the product itself, users of these data are advised that errors in the data may be present.