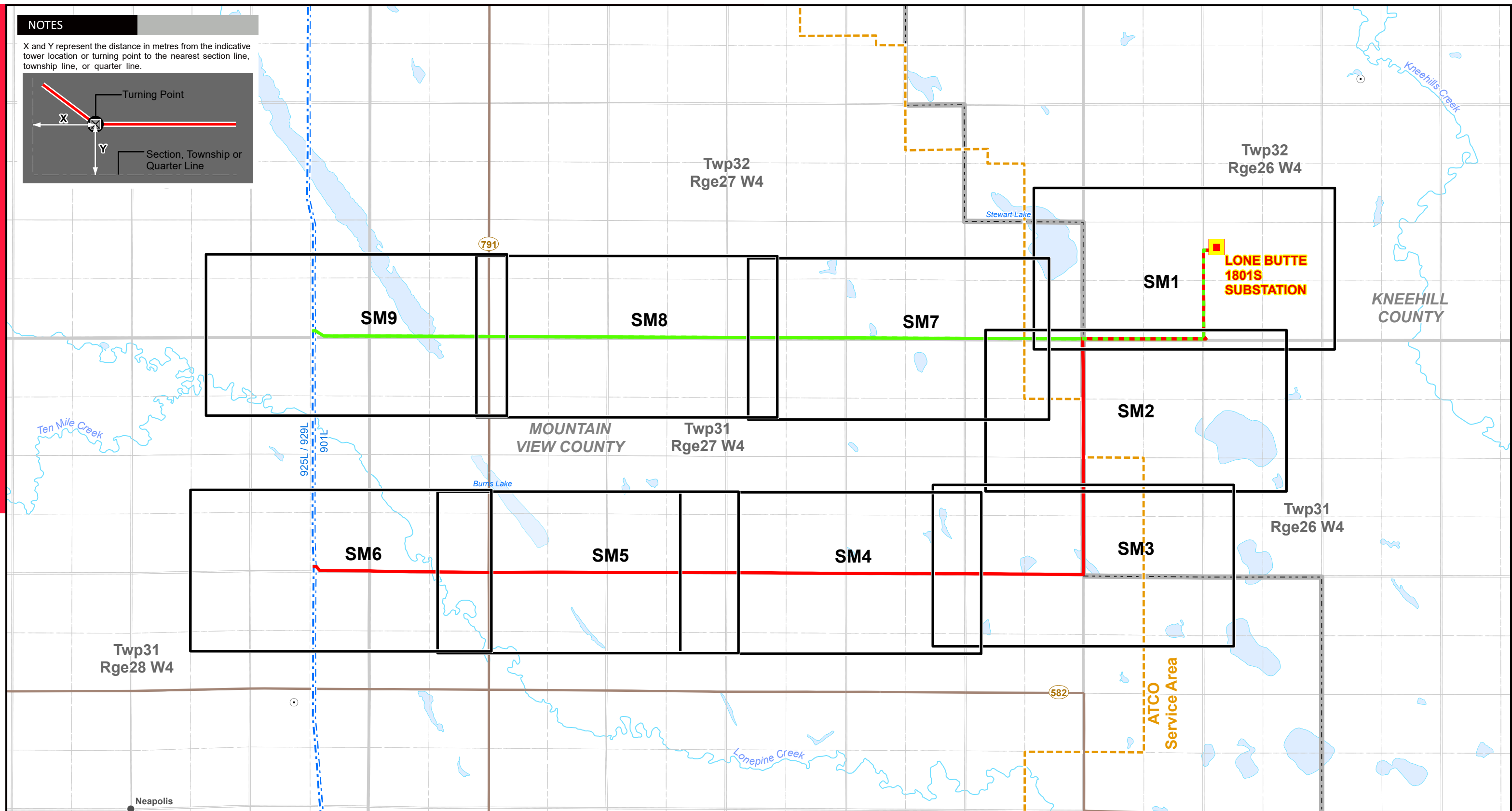
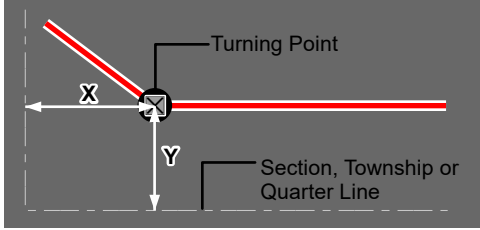


NOTES

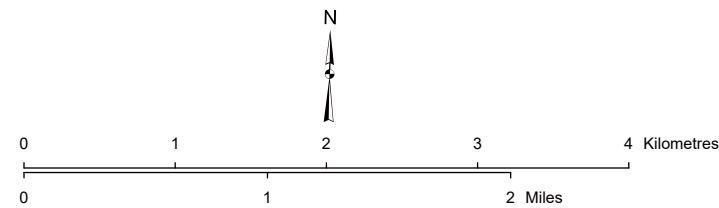
X and Y represent the distance in metres from the indicative tower location or turning point to the nearest section line, township line, or quarter line.



LEGEND

- Proposed Customer Substation
- Preferred Transmission Line Route
- Alternate Transmission Line Route
- Existing Transmission Line
- ATCO Service Area
- Map Sheet
- Communication Tower
- Hamlet or Locality
- Municipal or County Boundary
- River or Stream
- Road
- Water Body

NO:
DRAWN: CH - Maskwa
FILE NO.: Lone Butte-S11
REVISION: 0.00.00
AL FOLDER: Lone Butte
DATE: 2026-01-29



STRIP INDEX **SI**



PROPOSED

Lone Butte Solar Connection Project
240 kV TRANSMISSION LINE

Although there is no reason to believe that there are any errors associated with the data used to generate this product or in the product itself, users of these data are advised that errors in the data may be present.