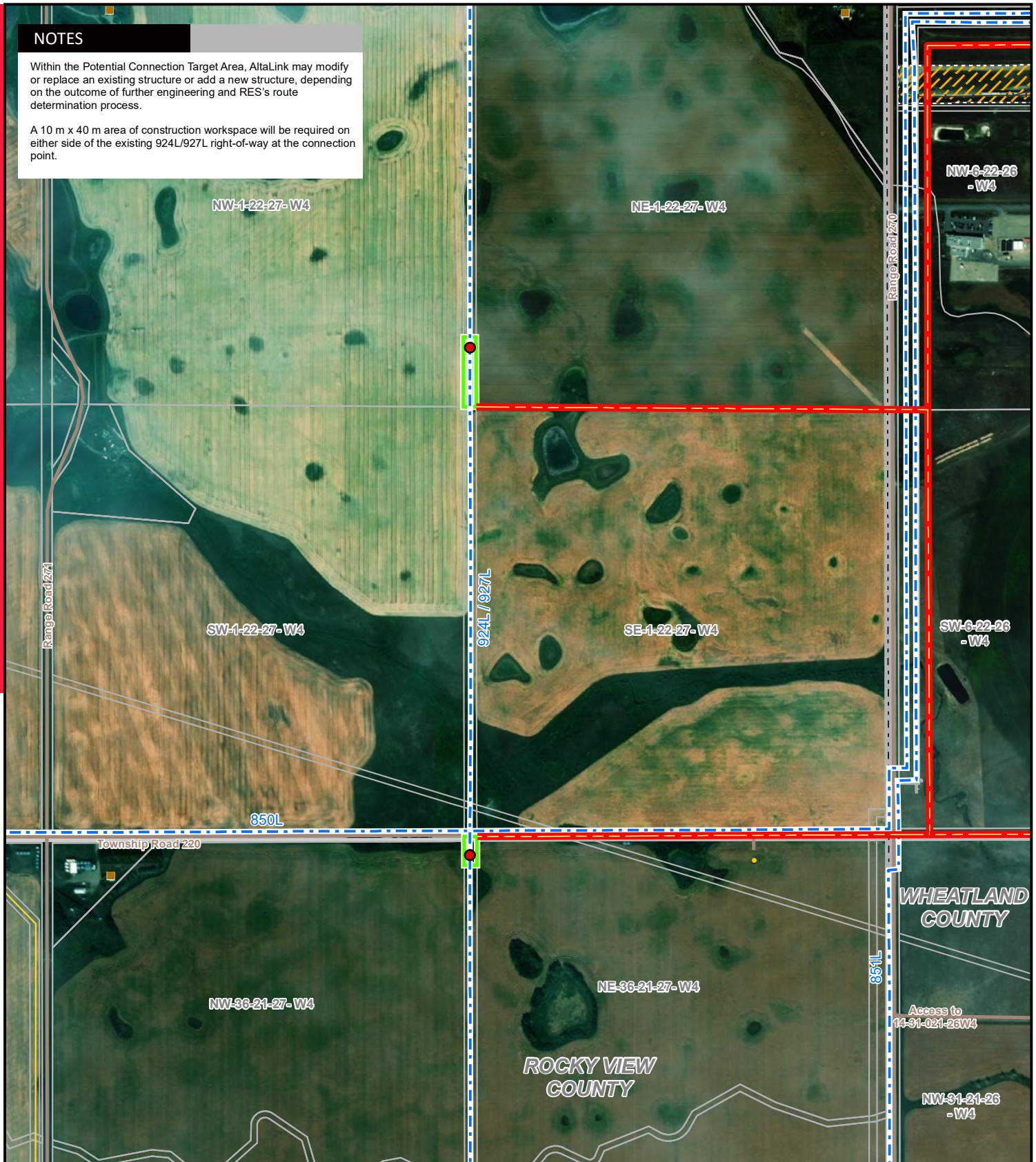


NOTES

Within the Potential Connection Target Area, AltaLink may modify or replace an existing structure or add a new structure, depending on the outcome of further engineering and RES's route determination process.

A 10 m x 40 m area of construction workspace will be required on either side of the existing 924L/927L right-of-way at the connection point.



LEGEND

- Potential Replacement of Existing Structure
- Proposed Customer Transmission Line
- Existing Transmission Line
- Potential Connection Target Area
- Residence
- Wellsite
- Municipal or County Boundary
- Pipeline
- Railway
- Road
- Oil and Gas Plant

NO: 35032683 - 6103
 DRAWN: SG - AL
 FILE NO.: XXXXXXX
 REVISION: 0.01.01
 AL FOLDER: RESC Nova Solar
DATE: 2022-01-21



DETAIL PHOTO DP1



POTENTIAL

Nova Solar Power Connection Project

Service Layer Credits: Source: Esri, Maxar, GeoEye, Earthstar Geographics, CNES/Airbus DS, USDA, USGS, AeroGRID, IGN, and the GIS User Community
 Although there is no reason to believe that there are any errors associated with the data used to generate this product or in the product itself, users of these data are advised that errors in the data may be present.