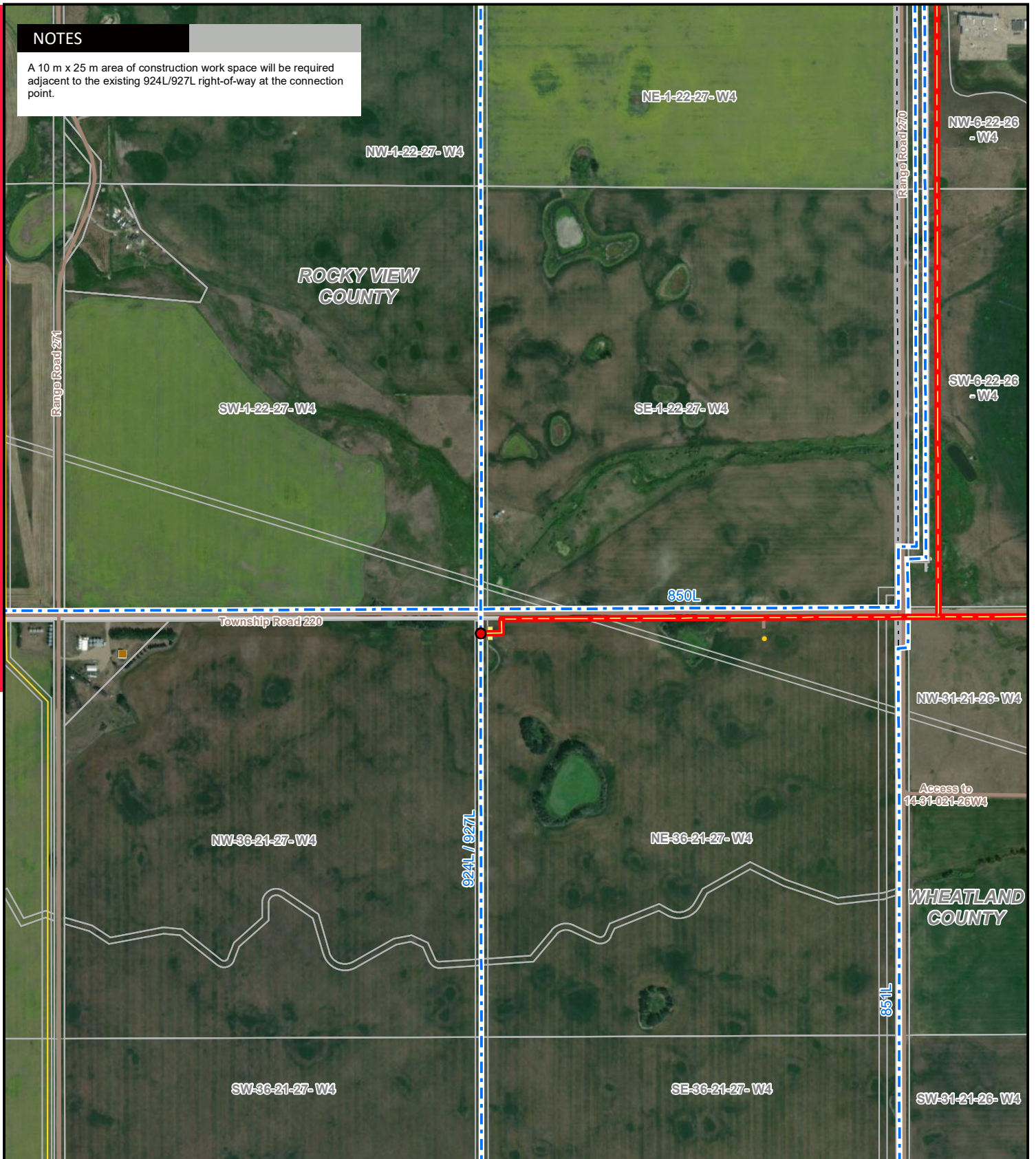


NOTES

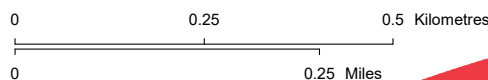
A 10 m x 25 m area of construction work space will be required adjacent to the existing 924L/927L right-of-way at the connection point.



LEGEND

- Proposed Modification of Existing Structure
- Proposed Customer Transmission Line
- - - Existing Transmission Line
- Construction Workspace
- Residence
- Wellsite
- Municipal or County Boundary
- Pipeline
- Road

NO: 35032683 - 6103
 DRAWN: SG - AL
 FILE NO.: XXXXXXX
 REVISION: 1.00.00
 AL FOLDER: RESC Nova Solar
DATE: 2022-07-14



DETAIL PHOTO DP1



PROPOSED

Nova Solar Power Connection Project

Service Layer Credits: Source: Esri, Maxar, GeoEye, Earthstar Geographics, CNES/Airbus DS, USDA, USGS, AeroGRID, IGN, and the GIS User Community
 Although there is no reason to believe that there are any errors associated with the data used to generate this product or in the product itself, users of these data are advised that errors in the data may be present.