

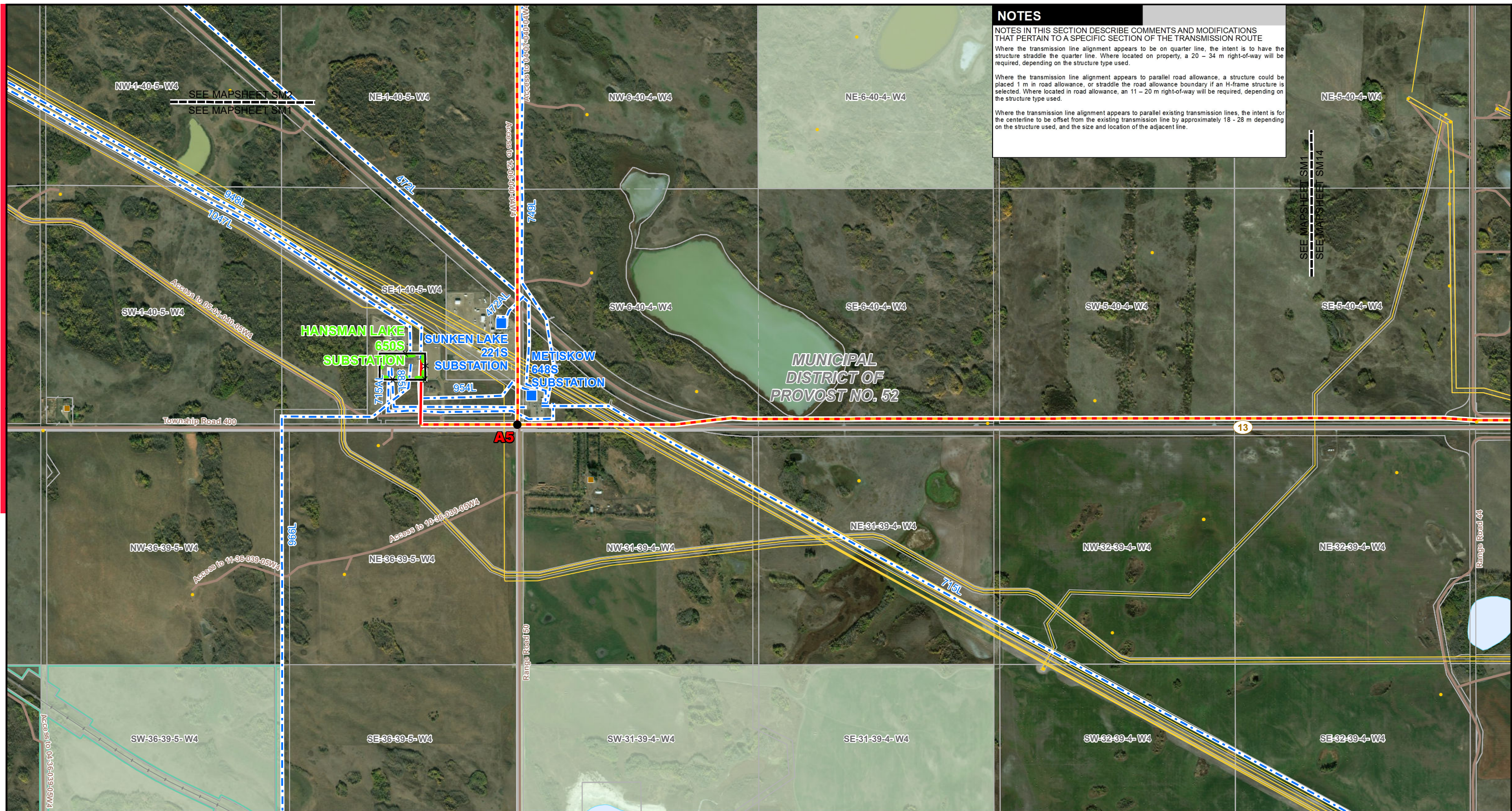
LEGEND			
Potential Substation Expansion	Existing Transmission Line	Other Protected Area	NO.: XXXXXXXXX DRAWN: SG - JACOBS FILE NO.: XXXXXXX REVISION: 0.00.00 AL FOLDER: PENV DATE: 2019-09-04
Existing Substation	Map Sheet	Urban Area	
Potential 240 kV Transmission Line Alignment on Property - Stage 1	Hamlet or Locality	Water Body	
Potential 240 kV Transmission Line Alignment along Road Allowance - Stage 1	Municipal or County Boundary		
Potential 240 kV Transmission Line Alignment on Property - Stage 2	Railway		
Potential 240 kV Transmission Line Alignment along Road Allowance - Stage 2	River or Stream		
	Road		
	Military Base		

STRIP INDEX **SI1**



POTENTIAL
 Provost to Edgerton and Niirem to Vermilion
 Transmission Development
 Provost to Edgerton Component

Although there is no reason to believe that there are any errors associated with the data used to generate this product or in the product itself, users of these data are advised that errors in the data may be present.



NOTES

NOTES IN THIS SECTION DESCRIBE COMMENTS AND MODIFICATIONS THAT PERTAIN TO A SPECIFIC SECTION OF THE TRANSMISSION ROUTE

Where the transmission line alignment appears to be on quarter line, the intent is to have the structure straddle the quarter line. Where located on property, a 20 - 34 m right-of-way will be required, depending on the structure type used.

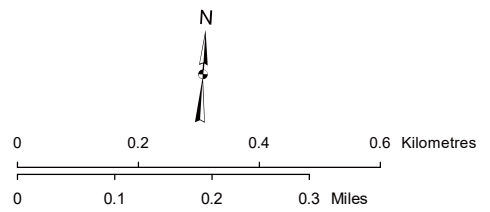
Where the transmission line alignment appears to parallel road allowance, a structure could be placed 1 m in road allowance, or straddle the road allowance boundary if an H-frame structure is selected. Where located in road allowance, an 11 - 20 m right-of-way will be required, depending on the structure type used.

Where the transmission line alignment appears to parallel existing transmission lines, the intent is for the centerline to be offset from the existing transmission line by approximately 18 - 28 m depending on the structure used, and the size and location of the adjacent line.

LEGEND

- Point Designation
- Existing Substation
- Potential 240 kV Transmission Line Alignment on Property - Stage 1
- Potential 240 kV Transmission Line Alignment on Road Allowance - Stage 1
- Potential 240 kV Transmission Line Alignment on Property - Stage 2
- Potential 240 kV Transmission Line Alignment on Road Allowance - Stage 2
- ▭ Potential Substation Upgrade
- ▭ Potential Substation Fenceline Expansion
- ✕ Fenceline
- Existing Transmission Line
- Hamlet or Locality
- Residence
- Wellsite
- Pipeline
- Railway
- Road
- Municipal or County Boundary
- Environmentally Significant Area
- Military Base
- Other Protected Area
- Crown Land
- Urban Area
- Water Body

NO: XXXXXXXXXXXX
 DRAWN: SG - JACOBS
 FILE NO.: XXXXXXXX
 REVISION: 0.00.00
 AL FOLDER: PENV
DATE: 2019-09-04



Photography dated: 2012 Source: Esri Basemap Imagery
 Although there is no reason to believe that there are any errors associated with the data used to generate this product or in the product itself, users of these data are advised that errors in the data may be present.

STRIP MOSAIC SM1



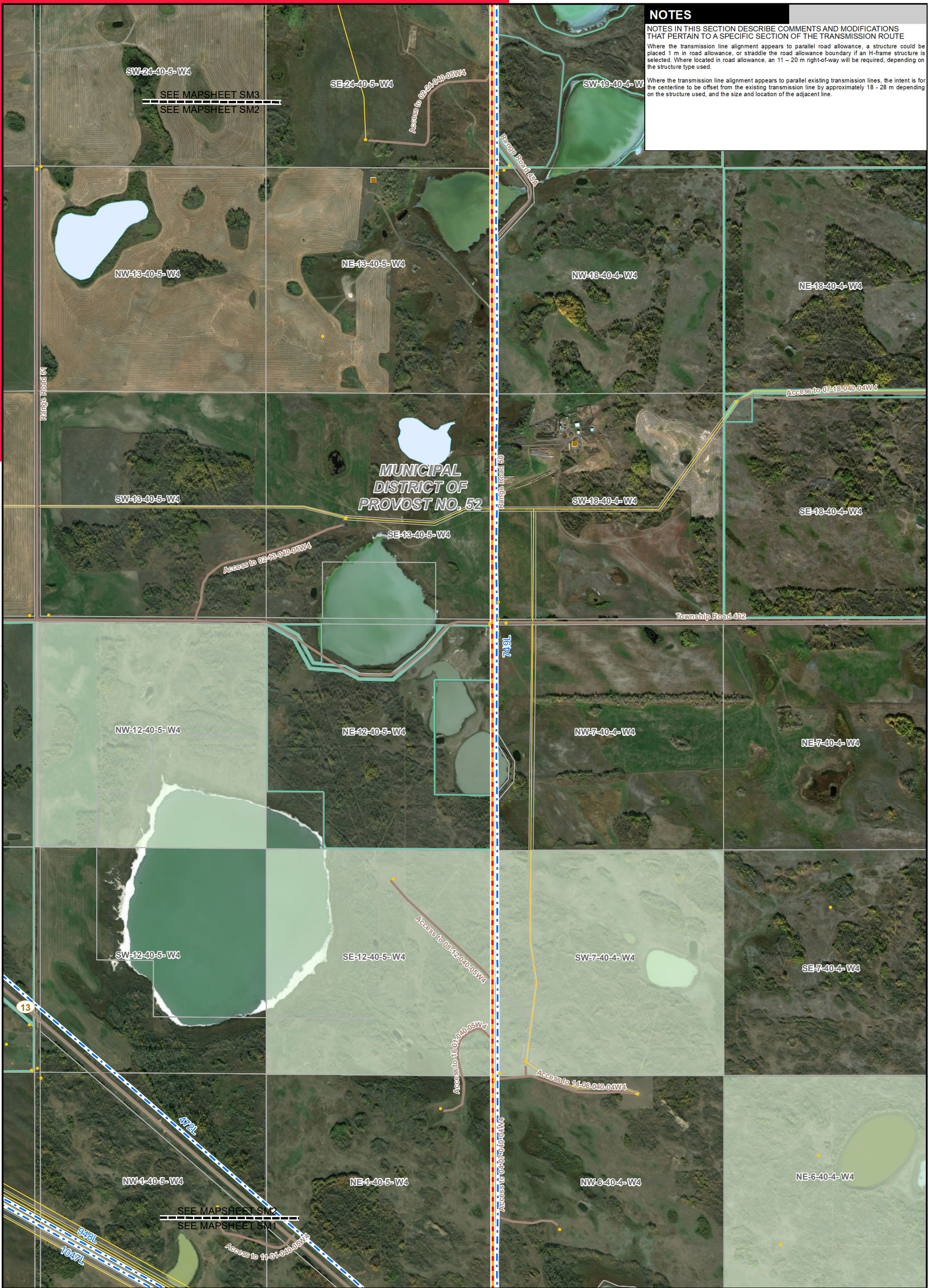
POTENTIAL
 Provost to Edgerton and Nilrem to Vermilion
 Transmission Development
 Provost to Edgerton Component

NOTES

NOTES IN THIS SECTION DESCRIBE COMMENTS AND MODIFICATIONS THAT PERTAIN TO A SPECIFIC SECTION OF THE TRANSMISSION ROUTE

Where the transmission line alignment appears to parallel road allowance, a structure could be placed 1 m in road allowance, or straddle the road allowance boundary if an H-frame structure is selected. Where located in road allowance, an 11 - 20 m right-of-way will be required, depending on the structure type used.

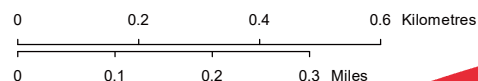
Where the transmission line alignment appears to parallel existing transmission lines, the intent is for the centerline to be offset from the existing transmission line by approximately 18 - 28 m depending on the structure used, and the size and location of the adjacent line.



LEGEND

- Point Designation
- Existing Substation
- Potential 240 kV Transmission Line Alignment on Property - Stage 1
- Potential 240 kV Transmission Line Alignment on Road Allowance - Stage 1
- Potential 240 kV Transmission Line Alignment on Property - Stage 2
- Potential Substation Fenceline Expansion
- Fenceline
- Potential Substation Upgrade
- Existing Transmission Line
- Hamlet or Locality
- Residence
- Wellsite
- Municipal or County Boundary
- Pipeline
- Road
- Railway
- Crown Land
- Environmentally Significant Area
- Military Base
- Other Protected Area
- Urban Area
- Water Body

NO.: XXXXXXXXX
 DRAWN: SG - JACOBS
 FILE NO.: XXXXXXX
 REVISION: 0.00.00
 AL FOLDER: PENV
DATE: 2019-09-04



Photography dated: 2012 Source: Esri Basemap Imagery
 Although there is no reason to believe that there are any errors associated with the data used to generate this product or in the product itself, users of these data are advised that errors in the data may be present.

STRIP MOSAIC SM2



POTENTIAL
 Provost to Edgerton and Niirem to Vermilion
 Transmission Development
 Provost to Edgerton Component



NOTES

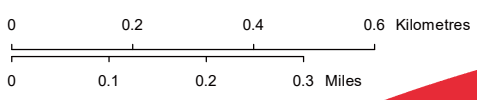
NOTES IN THIS SECTION DESCRIBE COMMENTS AND MODIFICATIONS THAT PERTAIN TO A SPECIFIC SECTION OF THE TRANSMISSION ROUTE

- Where the transmission line alignment appears to be on quarter line, the intent is to have the structure straddle the quarter line. Where located on property, a 20 - 34 m right-of-way will be required, depending on the structure type used.
- Where the transmission line alignment appears to parallel road allowance, a structure could be placed 1 m in road allowance, or straddle the road allowance boundary if an H-frame structure is selected. Where located in road allowance, an 11 - 20 m right-of-way will be required, depending on the structure type used.
- Where the transmission line alignment appears to parallel existing transmission lines, the intent is for the centerline to be offset from the existing transmission line by approximately 18 - 28 m depending on the structure used, and the size and location of the adjacent line.

LEGEND

● Point Designation	Potential 240 kV Transmission	— Pipeline
■ Existing Substation	— Line Alignment on Road Allowance - Stage 2	— Road
— Potential 240 kV Transmission Line Alignment on Property - Stage 1	— Potential Substation Fenceline Expansion	— Railway
— Potential 240 kV Transmission Line Alignment on Road Allowance - Stage 1	— Fenceline	— Crown Land
— Potential 240 kV Transmission Line Alignment on Property - Stage 2	— Potential Substation Upgrade	— Environmentally Significant Area
	● Existing Transmission Line	— Military Base
	● Hamlet or Locality	— Other Protected Area
	■ Residence	— Urban Area
	● Wellsite	— Water Body
	— Municipal or County Boundary	

NO.: XXXXXXXXX
 DRAWN: SG - JACOBS
 FILE NO.: XXXXXXXX
 REVISION: 0.00.00
 AL FOLDER: PENV
DATE: 2019-09-04



Photography dated: 2012 Source: Esri Basemap Imagery
 Although there is no reason to believe that there are any errors associated with the data used to generate this product or in the product itself, users of these data are advised that errors in the data may be present.

STRIP MOSAIC SM3



POTENTIAL
 Provost to Edgerton and Niirem to Vermilion
 Transmission Development
 Provost to Edgerton Component



NOTES

NOTES IN THIS SECTION DESCRIBE COMMENTS AND MODIFICATIONS THAT PERTAIN TO A SPECIFIC SECTION OF THE TRANSMISSION ROUTE

Where the transmission line alignment appears to parallel road allowance, a structure could be placed 1 m in road allowance, or straddle the road allowance boundary if an H-frame structure is selected. Where located in road allowance, an 11 - 20 m right-of-way will be required, depending on the structure type used.

Where the transmission line alignment appears to parallel existing transmission lines, the intent is for the centerline to be offset from the existing transmission line by approximately 18 - 28 m depending on the structure used, and the size and location of the adjacent line.

LEGEND

● Point Designation	Potential 240 kV Transmission	— Pipeline
■ Existing Substation	Line Alignment on Road Allowance - Stage 2	— Road
— Potential 240 kV Transmission Line Alignment on Property - Stage 1	Potential Substation Fenceline Expansion	— Railway
— Potential 240 kV Transmission Line Alignment on Road Allowance - Stage 1	Fenceline	— Crown Land
— Potential 240 kV Transmission Line Alignment on Property - Stage 2	Potential Substation Upgrade	— Environmentally Significant Area
	Existing Transmission Line	— Military Base
	Hamlet or Locality	— Other Protected Area
	Residence	— Urban Area
	Wellsite	— Water Body
	Municipal or County Boundary	

NO.: XXXXXXXXX
 DRAWN: SG - JACOBS
 FILE NO.: XXXXXXX
 REVISION: 0.00.00
 AL FOLDER: PENV
DATE: 2019-09-04

Photography dated: 2012 Source: Esri Basemap Imagery
 Although there is no reason to believe that there are any errors associated with the data used to generate this product or in the product itself, users of these data are advised that errors in the data may be present.

0 0.2 0.4 0.6 Kilometres
 0 0.1 0.2 0.3 Miles

STRIP MOSAIC SM4

ALTALINK
 A BERKSHIRE HATHAWAY ENERGY COMPANY

POTENTIAL
 Provost to Edgerton and Nilrem to Vermilion
 Transmission Development
 Provost to Edgerton Component



NOTES

NOTES IN THIS SECTION DESCRIBE COMMENTS AND MODIFICATIONS THAT PERTAIN TO A SPECIFIC SECTION OF THE TRANSMISSION ROUTE

Where the transmission line alignment appears to be on quarter line, the intent is to have the structure straddle the quarter line. Where located on property, a 20 - 34 m right-of-way will be required, depending on the structure type used.

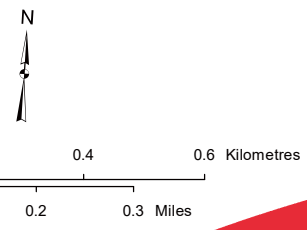
Where the transmission line alignment appears to parallel road allowance, a structure could be placed 1 m in road allowance, or straddle the road allowance boundary if an H-frame structure is selected. Where located in road allowance, an 11 - 20 m right-of-way will be required, depending on the structure type used.

Where the transmission line alignment appears to parallel existing transmission lines, the intent is for the centerline to be offset from the existing transmission line by approximately 18 - 28 m depending on the structure used, and the size and location of the adjacent line.

LEGEND

● Point Designation	Potential 240 kV Transmission Line Alignment on Road Allowance - Stage 2	— Pipeline
■ Existing Substation	Potential Substation Fenceline Expansion	— Road
— Potential 240 kV Transmission Line Alignment on Property - Stage 1	Fenceline	— Railway
— Potential 240 kV Transmission Line Alignment on Road Allowance - Stage 1	Potential Substation Upgrade	— Crown Land
— Potential 240 kV Transmission Line Alignment on Property - Stage 2	Existing Transmission Line	— Environmentally Significant Area
	● Hamlet or Locality	— Military Base
	■ Residence	— Other Protected Area
	● Wellsite	— Urban Area
	— Municipal or County Boundary	— Water Body

NO.: XXXXXXXXX
 DRAWN: SG - JACOBS
 FILE NO.: XXXXXXX
 REVISION: 0.00.00
 AL FOLDER: PENV
DATE: 2019-09-04



STRIP MOSAIC SM5



POTENTIAL
 Provost to Edgerton and Niirem to Vermilion Transmission Development
 Provost to Edgerton Component

Photography dated: 2012 Source: Esri Basemap Imagery
 Although there is no reason to believe that there are any errors associated with the data used to generate this product or in the product itself, users of these data are advised that errors in the data may be present.



NOTES

NOTES IN THIS SECTION DESCRIBE COMMENTS AND MODIFICATIONS THAT PERTAIN TO A SPECIFIC SECTION OF THE TRANSMISSION ROUTE

Where the transmission line alignment appears to parallel road allowance, a structure could be placed 1 m in road allowance, or straddle the road allowance boundary if an H-frame structure is selected. Where located in road allowance, an 11 - 20 m right-of-way will be required, depending on the structure type used.

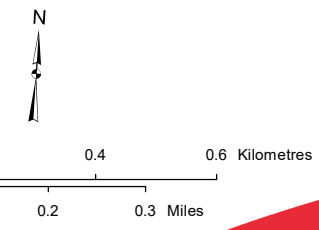
Where the transmission line alignment appears to parallel existing transmission lines, the intent is for the centerline to be offset from the existing transmission line by approximately 18 - 28 m depending on the structure used, and the size and location of the adjacent line.

At A20, an airbreak structure will be required to connect the proposed transmission line to the existing 749AL transmission line.

LEGEND

- Point Designation
- Existing Substation
- Potential 240 kV Transmission Line Alignment on Property - Stage 1
- Potential 240 kV Transmission Line Alignment on Road Allowance - Stage 1
- Potential 240 kV Transmission Line Alignment on Property - Stage 2
- Potential 240 kV Transmission Line Alignment on Road Allowance - Stage 2
- Potential Substation Fenceline Expansion
- Fenceline
- Potential Substation Upgrade
- Existing Transmission Line
- Hamlet or Locality
- Residence
- Wellsite
- Municipal or County Boundary
- Pipeline
- Road
- Railway
- Crown Land
- Environmentally Significant Area
- Militarily Base
- Other Protected Area
- Urban Area
- Water Body

NO.: XXXXXXXXX
 DRAWN: SG - JACOBS
 FILE NO.: XXXXXXXX
 REVISION: 0.00.00
 AL FOLDER: PENV
DATE: 2019-09-04



STRIP MOSAIC SM6



POTENTIAL
 Provost to Edgerton and Niirem to Vermilion
 Transmission Development
 Provost to Edgerton Component

Photography dated: 2012 Source: Esri Basemap Imagery
 Although there is no reason to believe that there are any errors associated with the data used to generate this product or in the product itself, users of these data are advised that errors in the data may be present.



NOTES

NOTES IN THIS SECTION DESCRIBE COMMENTS AND MODIFICATIONS THAT PERTAIN TO A SPECIFIC SECTION OF THE TRANSMISSION ROUTE

Where the transmission line alignment appears to be on quarter line, the intent is to have the structure straddle the quarter line. Where located on property, a 20 - 34 m right-of-way will be required, depending on the structure type used.

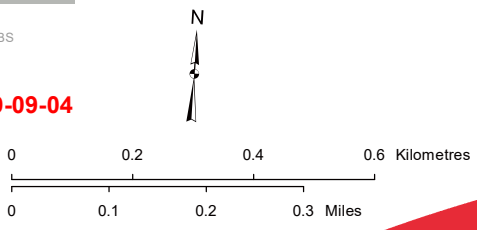
Where the transmission line alignment appears to parallel road allowance, a structure could be placed 1 m in road allowance, or straddle the road allowance boundary if an H-frame structure is selected. Where located in road allowance, an 11 - 20 m right-of-way will be required, depending on the structure type used.

Where the transmission line alignment appears to parallel existing transmission lines, the intent is for the centerline to be offset from the existing transmission line by approximately 18 - 28 m depending on the structure used, and the size and location of the adjacent line.

LEGEND

● Point Designation	Potential 240 kV Transmission	— Pipeline
■ Existing Substation	— Line Alignment on Road Allowance - Stage 2	— Road
— Potential 240 kV Transmission Line Alignment on Property - Stage 1	— Potential Substation Fenceline Expansion	— Railway
— Potential 240 kV Transmission Line Alignment on Road Allowance - Stage 1	— Fenceline	— Crown Land
— Potential 240 kV Transmission Line Alignment on Property - Stage 2	— Potential Substation Upgrade	— Environmentally Significant Area
— Existing Transmission Line	● Hamlet or Locality	— Military Base
● Residence	● Wellsite	— Other Protected Area
— Municipal or County Boundary	— Urban Area	— Water Body

NO.: XXXXXXXXX
 DRAWN: SG - JACOBS
 FILE NO.: XXXXXXX
 REVISION: 0.00.00
 AL FOLDER: PENV
DATE: 2019-09-04



STRIP MOSAIC SM7



POTENTIAL
 Provost to Edgerton and Niirem to Vermilion
 Transmission Development
 Provost to Edgerton Component

Photography dated: 2012 Source: Esri Basemap Imagery
 Although there is no reason to believe that there are any errors associated with the data used to generate this product or in the product itself, users of these data are advised that errors in the data may be present.

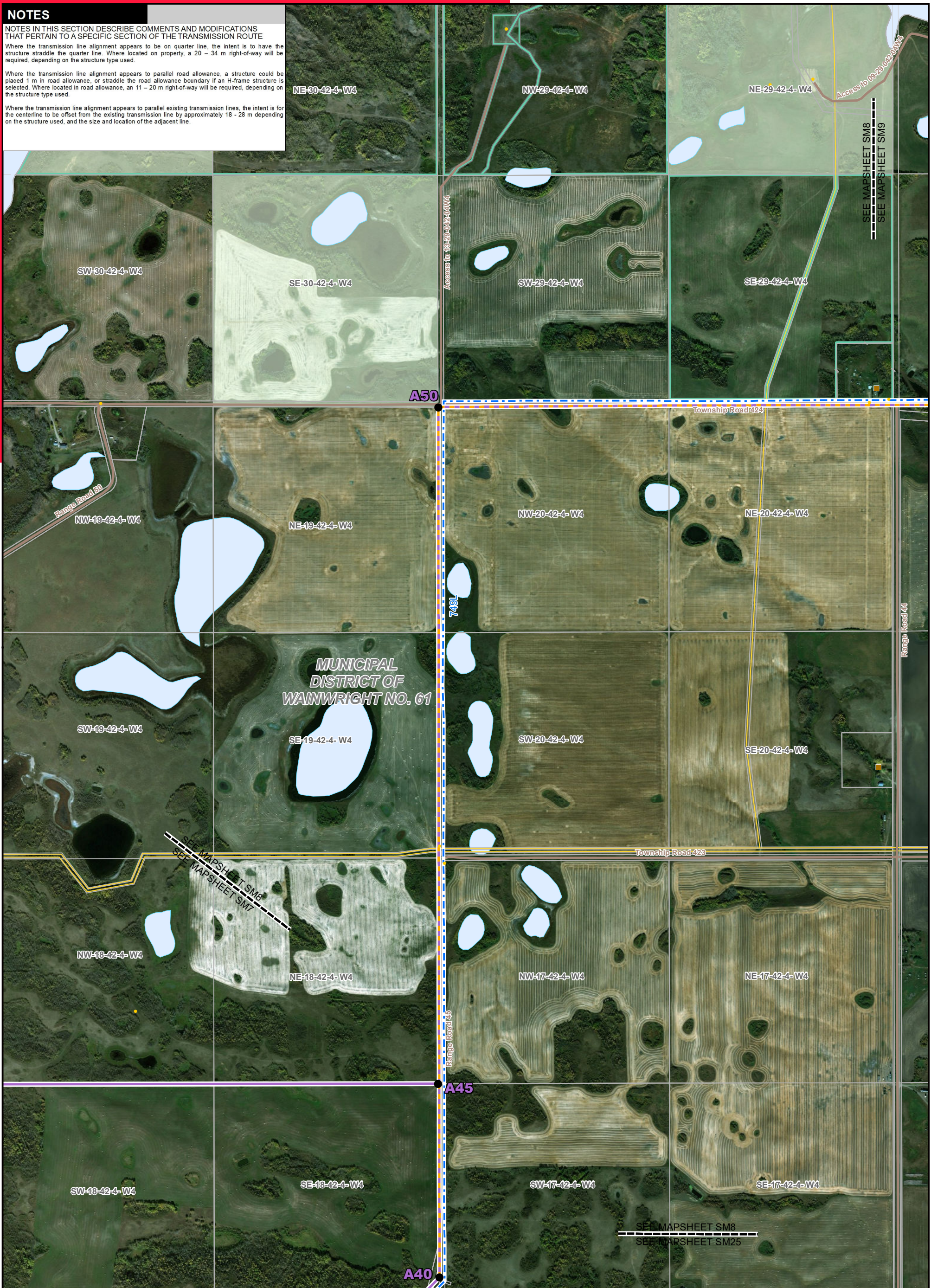
NOTES

NOTES IN THIS SECTION DESCRIBE COMMENTS AND MODIFICATIONS THAT PERTAIN TO A SPECIFIC SECTION OF THE TRANSMISSION ROUTE

Where the transmission line alignment appears to be on quarter line, the intent is to have the structure straddle the quarter line. Where located on property, a 20 – 34 m right-of-way will be required, depending on the structure type used.

Where the transmission line alignment appears to parallel road allowance, a structure could be placed 1 m in road allowance, or straddle the road allowance boundary if an H-frame structure is selected. Where located in road allowance, an 11 – 20 m right-of-way will be required, depending on the structure type used.

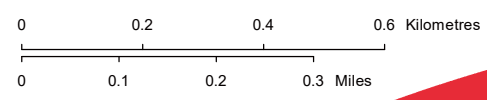
Where the transmission line alignment appears to parallel existing transmission lines, the intent is for the centerline to be offset from the existing transmission line by approximately 18 – 28 m depending on the structure used, and the size and location of the adjacent line.



LEGEND

● Point Designation	Potential 240 kV Transmission Line Alignment on Road Allowance - Stage 2	Pipeline
■ Existing Substation	Potential Substation Fenceline Expansion	Road
— Potential 240 kV Transmission Line Alignment on Property - Stage 1	Fenceline	Railway
— Potential 240 kV Transmission Line Alignment on Road Allowance - Stage 1	Potential Substation Upgrade	Crown Land
— Potential 240 kV Transmission Line Alignment on Property - Stage 2	Existing Transmission Line	Environmentally Significant Area
● Hamlet or Locality	● Residence	Military Base
● Wellsite	— Municipal or County Boundary	Other Protected Area
		Urban Area
		Water Body

NO.: XXXXXXXXX
 DRAWN: SG - JACOBS
 FILE NO.: XXXXXXXX
 REVISION: 0.00.00
 AL FOLDER: PENV
DATE: 2019-09-04



Photography dated: 2012 Source: Esri Basemap Imagery
 Although there is no reason to believe that there are any errors associated with the data used to generate this product or in the product itself, users of these data are advised that errors in the data may be present.

STRIP MOSAIC SM8



POTENTIAL
 Provost to Edgerton and Nilrem to Vermilion Transmission Development
 Provost to Edgerton Component



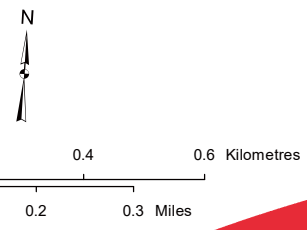
MUNICIPAL DISTRICT OF WAINWRIGHT NO. 61

NOTES
 NOTES IN THIS SECTION DESCRIBE COMMENTS AND MODIFICATIONS THAT PERTAIN TO A SPECIFIC SECTION OF THE TRANSMISSION ROUTE
 Where the transmission line alignment appears to parallel road allowance, a structure could be placed 1 m in road allowance, or straddle the road allowance boundary if an H-frame structure is selected. Where located in road allowance, an 11 - 20 m right-of-way will be required, depending on the structure type used.
 Where the transmission line alignment appears to parallel existing transmission lines, the intent is for the centerline to be offset from the existing transmission line by approximately 18 - 28 m depending on the structure used, and the size and location of the adjacent line.

LEGEND

● Point Designation	— Potential 240 kV Transmission	— Pipeline
■ Existing Substation	— Line Alignment on Road Allowance - Stage 2	— Road
— Potential 240 kV Transmission Line Alignment on Property - Stage 1	— Potential Substation Fenceline Expansion	— Railway
— Potential 240 kV Transmission Line Alignment on Road Allowance - Stage 1	— Fenceline	— Crown Land
— Potential 240 kV Transmission Line Alignment on Property - Stage 2	— Potential Substation Upgrade	— Environmentally Significant Area
	— Existing Transmission Line	— Military Base
	● Hamlet or Locality	— Other Protected Area
	■ Residence	— Urban Area
	● Wellsite	— Water Body
	— Municipal or County Boundary	

NO.: XXXXXXXXXX
 DRAWN: SG - JACOBS
 FILE NO.: XXXXXXXX
 REVISION: 0.00.00
 AL FOLDER: PENV
DATE: 2019-09-04

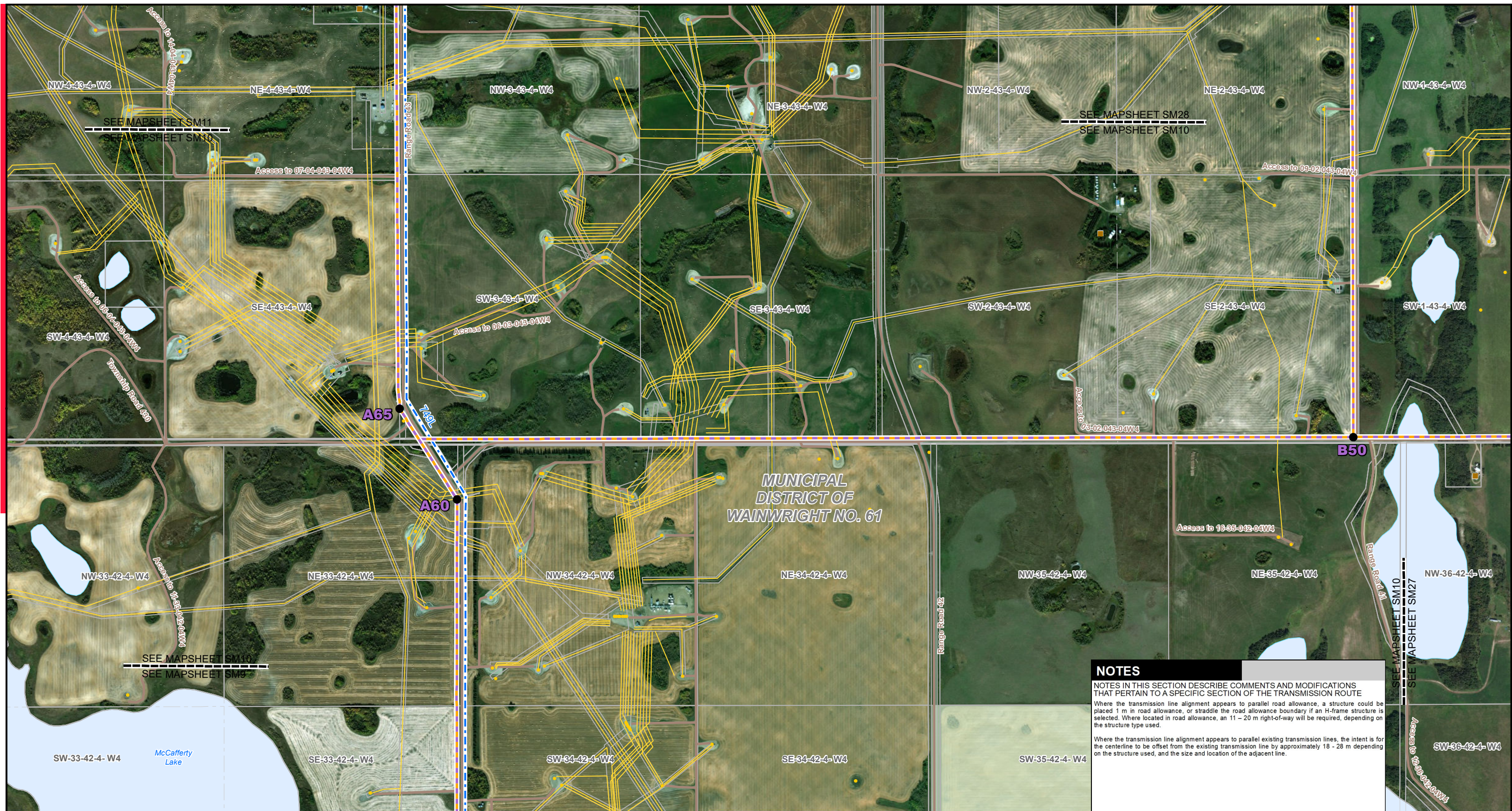


STRIP MOSAIC SM9



POTENTIAL
 Provost to Edgerton and Nilrem to Vermilion
 Transmission Development
 Provost to Edgerton Component

Photography dated: 2012 Source: Esri Basemap Imagery
 Although there is no reason to believe that there are any errors associated with the data used to generate this product or in the product itself, users of these data are advised that errors in the data may be present.



NOTES

NOTES IN THIS SECTION DESCRIBE COMMENTS AND MODIFICATIONS THAT PERTAIN TO A SPECIFIC SECTION OF THE TRANSMISSION ROUTE

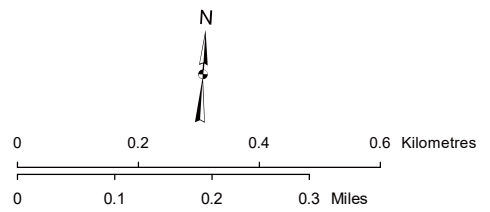
Where the transmission line alignment appears to parallel road allowance, a structure could be placed 1 m in road allowance, or straddle the road allowance boundary if an H-frame structure is selected. Where located in road allowance, an 11 - 20 m right-of-way will be required, depending on the structure type used.

Where the transmission line alignment appears to parallel existing transmission lines, the intent is for the centerline to be offset from the existing transmission line by approximately 18 - 28 m depending on the structure used, and the size and location of the adjacent line.

LEGEND

- Point Designation
- Existing Substation
- Potential 240 kV Transmission Line Alignment on Property - Stage 1
- Potential 240 kV Transmission Line Alignment on Road Allowance - Stage 1
- Potential 240 kV Transmission Line Alignment on Property - Stage 2
- Potential 240 kV Transmission Line Alignment on Road Allowance - Stage 2
- ▭ Potential Substation Upgrade
- ▭ Potential Substation Fenceline Expansion
- ▭ Fenceline
- Existing Transmission Line
- Hamlet or Locality
- Residence
- Wellsite
- Pipeline
- Railway
- Road
- Municipal or County Boundary
- Environmentally Significant Area
- Military Base
- Other Protected Area
- Crown Land
- Urban Area
- Water Body

NO: XXXXXXXXXXXX
 DRAWN: SG - JACOBS
 FILE NO.: XXXXXXXX
 REVISION: 0.00.00
 AL FOLDER: PENV
DATE: 2019-09-04



Photography dated: 2012 Source: Esri Basemap Imagery
 Although there is no reason to believe that there are any errors associated with the data used to generate this product or in the product itself, users of these data are advised that errors in the data may be present.

STRIP MOSAIC SM10



POTENTIAL
 Provost to Edgerton and Nilrem to Vermilion
 Transmission Development
 Provost to Edgerton Component



NOTES

NOTES IN THIS SECTION DESCRIBE COMMENTS AND MODIFICATIONS THAT PERTAIN TO A SPECIFIC SECTION OF THE TRANSMISSION ROUTE

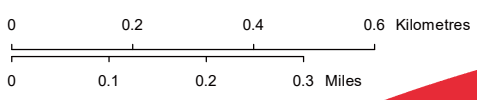
Where the transmission line alignment appears to parallel road allowance, a structure could be placed 1 m in road allowance, or straddle the road allowance boundary if an H-frame structure is selected. Where located in road allowance, an 11 - 20 m right-of-way will be required, depending on the structure type used.

Where the transmission line alignment appears to parallel existing transmission lines, the intent is for the centerline to be offset from the existing transmission line by approximately 18 - 28 m depending on the structure used, and the size and location of the adjacent line.

LEGEND

● Point Designation	Potential 240 kV Transmission Line Alignment on Road Allowance - Stage 2	— Pipeline
■ Existing Substation	Potential Substation Fenceline Expansion	— Road
— Potential 240 kV Transmission Line Alignment on Property - Stage 1	Fenceline	— Railway
— Potential 240 kV Transmission Line Alignment on Road Allowance - Stage 1	Potential Substation Upgrade	— Crown Land
— Potential 240 kV Transmission Line Alignment on Property - Stage 2	Existing Transmission Line	— Environmentally Significant Area
● Hamlet or Locality	Residence	— Military Base
● Wellsite	— Municipal or County Boundary	— Other Protected Area
		— Urban Area
		— Water Body

NO.: XXXXXXXXX
 DRAWN: SG - JACOBS
 FILE NO.: XXXXXXXX
 REVISION: 0.00.00
 AL FOLDER: PENV
DATE: 2019-09-04



Photography dated: 2012 Source: Esri Basemap Imagery
 Although there is no reason to believe that there are any errors associated with the data used to generate this product or in the product itself, users of these data are advised that errors in the data may be present.

STRIP MOSAIC SM11



POTENTIAL
 Provost to Edgerton and Niirem to Vermilion
 Transmission Development
 Provost to Edgerton Component



LEGEND

- Point Designation
- Existing Substation
- Potential 240 kV Transmission Line Alignment on Property - Stage 1
- Potential 240 kV Transmission Line Alignment on Road Allowance - Stage 1
- Potential 240 kV Transmission Line Alignment on Property - Stage 2
- Potential 240 kV Transmission Line Alignment on Road Allowance - Stage 2
- Potential Substation Fenceline Expansion
- Fenceline
- Potential Substation Upgrade
- Existing Transmission Line
- Hamlet or Locality
- Residence
- Wellsite
- Municipal or County Boundary
- Pipeline
- Road
- Railway
- Crown Land
- Environmentally Significant Area
- Military Base
- Other Protected Area
- Urban Area
- Water Body

NO.: XXXXXXXXXX
 DRAWN: SG - JACOBS
 FILE NO.: XXXXXXXX
 REVISION: 0.00.00
 AL FOLDER: PENV
DATE: 2019-09-04

Photography dated: 2012 Source: Esri Basemap Imagery
 Although there is no reason to believe that there are any errors associated with the data used to generate this product or in the product itself, users of these data are advised that errors in the data may be present.

0 0.2 0.4 0.6 Kilometres
 0 0.1 0.2 0.3 Miles

STRIP MOSAIC SM12

ALTALINK
 A BERKSHIRE HATHAWAY ENERGY COMPANY

POTENTIAL
 Provost to Edgerton and Niirem to Vermilion Transmission Development
 Provost to Edgerton Component

NOTES

NOTES IN THIS SECTION DESCRIBE COMMENTS AND MODIFICATIONS THAT PERTAIN TO A SPECIFIC SECTION OF THE TRANSMISSION ROUTE

Where the transmission line alignment appears to be on quarter line, the intent is to have the structure straddle the quarter line. Where located on property, a 20 - 34 m right-of-way will be required, depending on the structure type used.

Where the transmission line alignment appears to parallel road allowance, a structure could be placed 1 m in road allowance, or straddle the road allowance boundary if an H-frame structure is selected. Where located in road allowance, an 11 - 20 m right-of-way will be required, depending on the structure type used.

Where the transmission line alignment appears to parallel existing transmission lines, the intent is for the centerline to be offset from the existing transmission line by approximately 18 - 28 m depending on the structure used, and the size and location of the adjacent line.

NW-33-43-4-W4 SEE MAPSHEET SM13
 SEE MAPSHEET SM12

NE-33-43-4-W4

NW-34-43-4-W4

NE-34-43-4-W4

NW-35-43-4-W4

SW-33-43-4-W4

SW-34-43-4-W4

SE-34-43-4-W4

SW-35-43-4-W4

NW-28-43-4-W4

NE-28-43-4-W4

NW-27-43-4-W4

NE-27-43-4-W4

NW-26-43-4-W4

SE-28-43-4-W4

SW-28-43-4-W4

SE-27-43-4-W4

SW-27-43-4-W4

SE-27-43-4-W4

SW-26-43-4-W4

NW-21-43-4-W4

NE-21-43-4-W4

NW-22-43-4-W4

NE-22-43-4-W4

NW-23-43-4-W4

SW-21-43-4-W4

SE-21-43-4-W4

SW-22-43-4-W4

SE-22-43-4-W4

SW-23-43-4-W4

NW-16-43-4-W4

NE-16-43-4-W4

NW-15-43-4-W4

NE-15-43-4-W4

NW-14-43-4-W4

A75

A70

Range Road 43

749L

MUNICIPAL DISTRICT OF WAINWRIGHT NO. 61

SEE MAPSHEET SM11
 SEE MAPSHEET SM29

Range Road 42

Township Road 494

Access to R-22-013-04W4

SEE MAPSHEET SM12
 SEE MAPSHEET SM11

Access to R-35-013-04W4

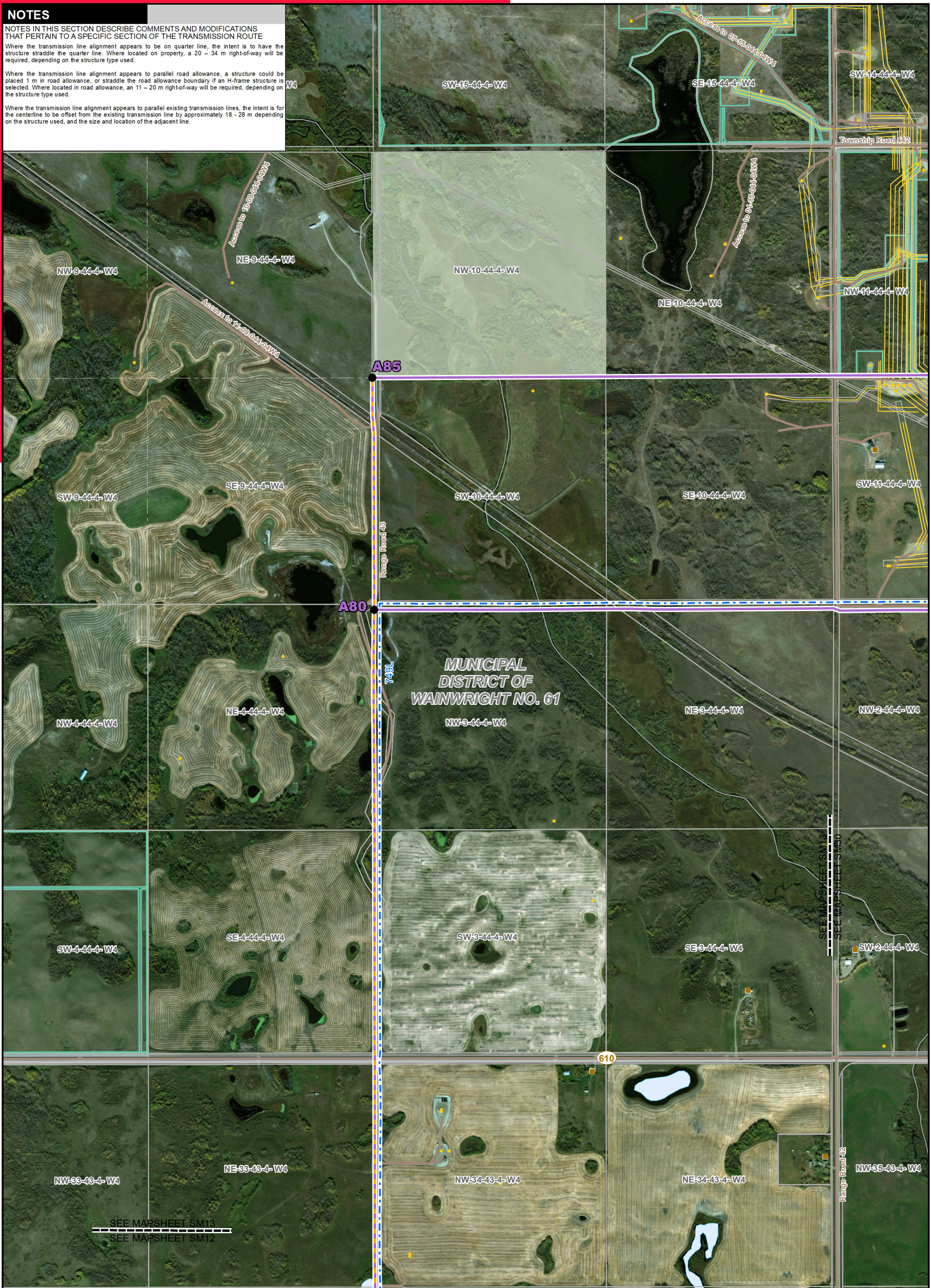
NOTES

NOTES IN THIS SECTION DESCRIBE COMMENTS AND MODIFICATIONS THAT PERTAIN TO A SPECIFIC SECTION OF THE TRANSMISSION ROUTE

Where the transmission line alignment appears to be on quarter line, the intent is to have the structure straddle the quarter line. Where located on property, a 20 - 34 m right-of-way will be required, depending on the structure type used.

Where the transmission line alignment appears to parallel road allowance, a structure could be placed 1 m in road allowance, or straddle the road allowance boundary if an H-frame structure is selected. Where located in road allowance, an 11 - 20 m right-of-way will be required, depending on the structure type used.

Where the transmission line alignment appears to parallel existing transmission lines, the intent is for the centerline to be offset from the existing transmission line by approximately 18 - 28 m depending on the structure used, and the size and location of the adjacent line.



LEGEND

● Point Designation	Potential 240 kV Transmission Line Alignment on Road Allowance - Stage 2	— Pipeline
■ Existing Substation	Potential Substation Fenceline Expansion	— Road
— Potential 240 kV Transmission Line Alignment on Property - Stage 1	Fenceline	— Railway
— Potential 240 kV Transmission Line Alignment on Road Allowance - Stage 1	Potential Substation Upgrade	— Crown Land
— Potential 240 kV Transmission Line Alignment on Property - Stage 2	Existing Transmission Line	— Environmentally Significant Area
● Hamlet or Locality	Residence	— Military Base
● Wellsite	Municipal or County Boundary	— Other Protected Area
		— Urban Area
		— Water Body

NO.: XXXXXXXXXX
 DRAWN: SG - JACOBS
 FILE NO.: XXXXXXXX
 REVISION: 0.00.00
 AL FOLDER: PENV
DATE: 2019-09-04

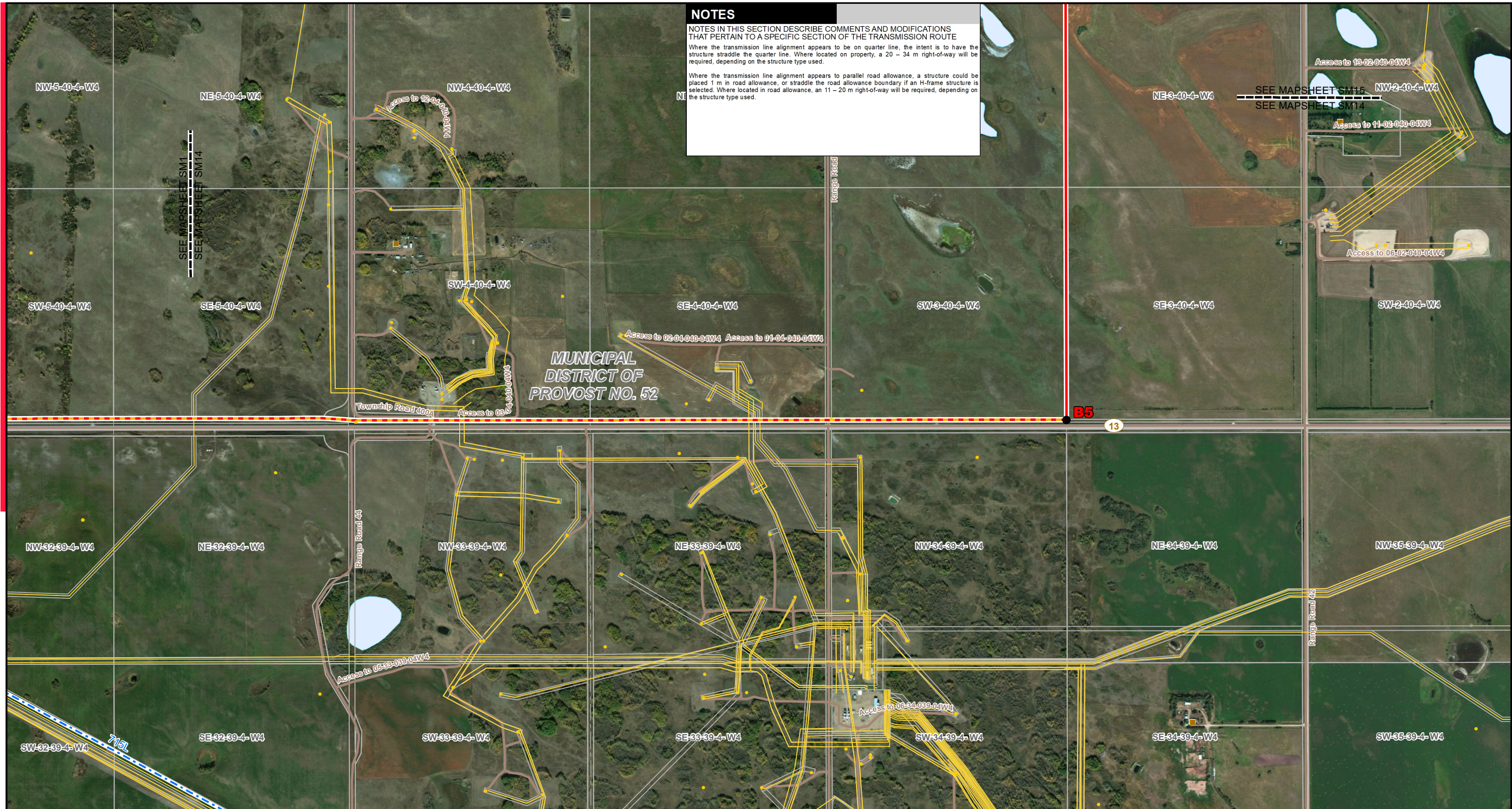
Photography dated: 2012 Source: Esri Basemap Imagery
 Although there is no reason to believe that there are any errors associated with the data used to generate this product or in the product itself, users of these data are advised that errors in the data may be present.

0 0.2 0.4 0.6 Kilometres
 0 0.1 0.2 0.3 Miles

STRIP MOSAIC SM13

ALTALINK
 A BERKSHIRE HATHAWAY ENERGY COMPANY

POTENTIAL
 Provost to Edgerton and Niirem to Vermilion Transmission Development
 Provost to Edgerton Component



NOTES

NOTES IN THIS SECTION DESCRIBE COMMENTS AND MODIFICATIONS THAT PERTAIN TO A SPECIFIC SECTION OF THE TRANSMISSION ROUTE

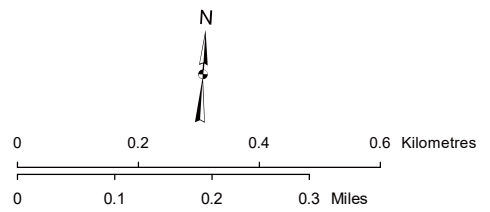
Where the transmission line alignment appears to be on quarter line, the intent is to have the structure straddle the quarter line. Where located on property, a 20 - 34 m right-of-way will be required, depending on the structure type used.

Where the transmission line alignment appears to parallel road allowance, a structure could be placed 1 m in road allowance, or straddle the road allowance boundary if an H-frame structure is selected. Where located in road allowance, an 11 - 20 m right-of-way will be required, depending on the structure type used.

LEGEND

- Point Designation
- Existing Substation
- Potential 240 kV Transmission Line Alignment on Property - Stage 1
- Potential 240 kV Transmission Line Alignment on Road Allowance - Stage 1
- Potential 240 kV Transmission Line Alignment on Property - Stage 2
- Potential 240 kV Transmission Line Alignment on Road Allowance - Stage 2
- Potential Substation Upgrade
- Potential Substation Fenceline Expansion
- Fenceline
- Existing Transmission Line
- Hamlet or Locality
- Residence
- Wellsite
- Pipeline
- Railway
- Road
- Municipal or County Boundary
- Environmentally Significant Area
- Military Base
- Other Protected Area
- Crown Land
- Urban Area
- Water Body

NO: XXXXXXXXXXXX
 DRAWN: SG - JACOBS
 FILE NO.: XXXXXXXX
 REVISION: 0.00.00
 AL FOLDER: PENV
DATE: 2019-09-04



Photography dated: 2012 Source: Esri Basemap Imagery
 Although there is no reason to believe that there are any errors associated with the data used to generate this product or in the product itself, users of these data are advised that errors in the data may be present.

STRIP MOSAIC SM14



POTENTIAL
 Provost to Edgerton and Nilrem to Vermillion
 Transmission Development
 Provost to Edgerton Component



NOTES

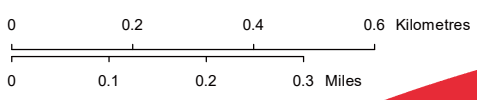
NOTES IN THIS SECTION DESCRIBE COMMENTS AND MODIFICATIONS THAT PERTAIN TO A SPECIFIC SECTION OF THE TRANSMISSION ROUTE

Where the transmission line alignment appears to be on quarter line, the intent is to have the structure straddle the quarter line. Where located on property, a 20 - 34 m right-of-way will be required, depending on the structure type used.

LEGEND

● Point Designation	Potential 240 kV Transmission Line Alignment on Road Allowance - Stage 2	— Pipeline
■ Existing Substation	Potential Substation Fenceline Expansion	— Road
— Potential 240 kV Transmission Line Alignment on Property - Stage 1	Fenceline	— Railway
— Potential 240 kV Transmission Line Alignment on Road Allowance - Stage 1	Potential Substation Upgrade	— Crown Land
— Potential 240 kV Transmission Line Alignment on Property - Stage 2	Existing Transmission Line	— Environmentally Significant Area
	● Hamlet or Locality	— Military Base
	■ Residence	— Other Protected Area
	● Wellsite	— Urban Area
	— Municipal or County Boundary	— Water Body

NO.: XXXXXXXXX
 DRAWN: SG - JACOBS
 FILE NO.: XXXXXXXX
 REVISION: 0.00.00
 AL FOLDER: PENV
DATE: 2019-09-04



Photography dated: 2012 Source: Esri Basemap Imagery
 Although there is no reason to believe that there are any errors associated with the data used to generate this product or in the product itself, users of these data are advised that errors in the data may be present.

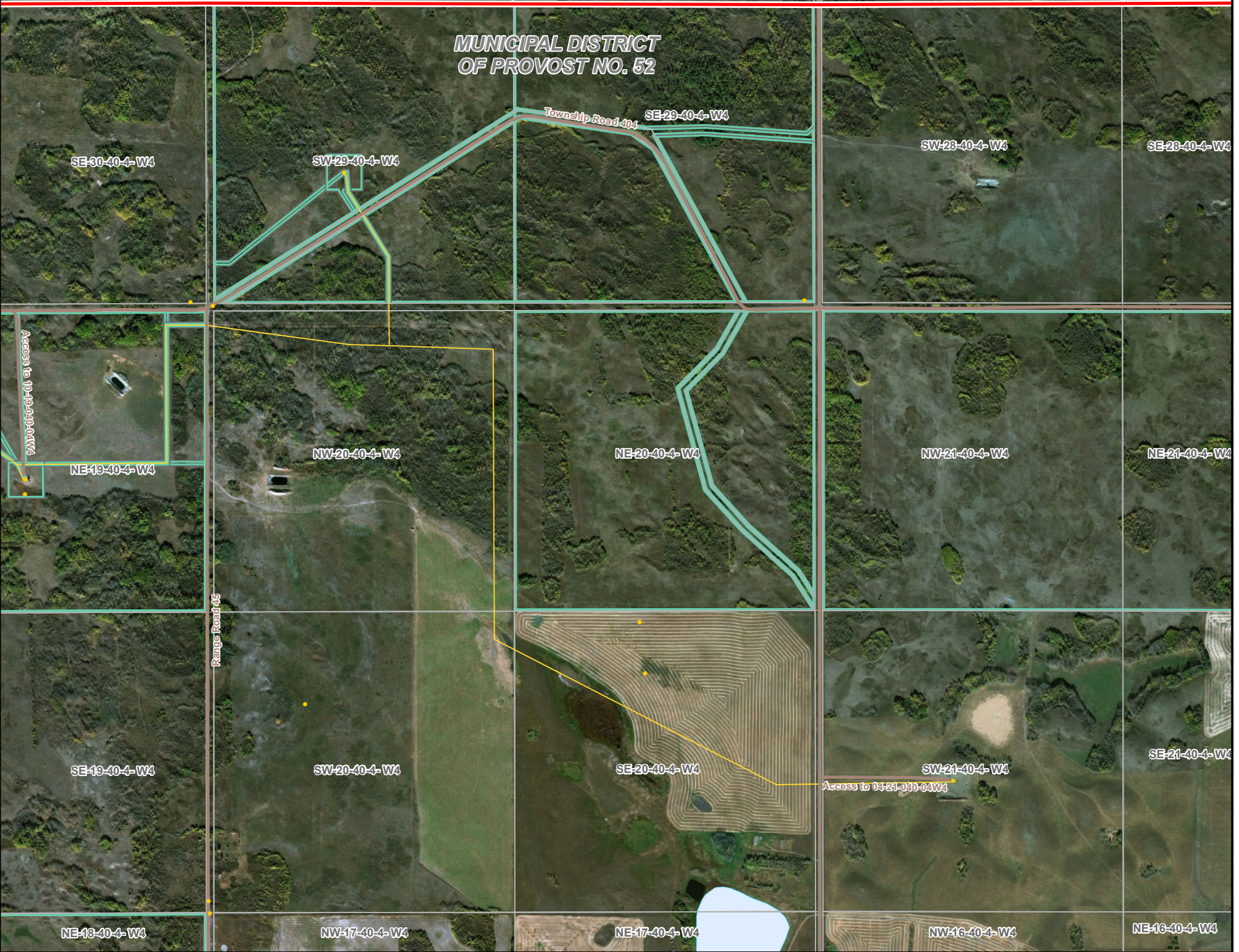
STRIP MOSAIC SM15



POTENTIAL
 Provost to Edgerton and Niirem to Vermilion
 Transmission Development
 Provost to Edgerton Component

NOTES

NOTES IN THIS SECTION DESCRIBE COMMENTS AND MODIFICATIONS THAT PERTAIN TO A SPECIFIC SECTION OF THE TRANSMISSION ROUTE
 Where the transmission line alignment appears to be on quarter line, the intent is to have the structure straddle the quarter line. Where located on property, a 20 - 34 m right-of-way will be required, depending on the structure type used.



LEGEND

● Point Designation	Potential 240 kV Transmission Line Alignment on Road Allowance - Stage 2	— Pipeline
■ Existing Substation	Potential Substation Fenceline Expansion	— Road
— Potential 240 kV Transmission Line Alignment on Property - Stage 1	Fenceline	— Railway
— Potential 240 kV Transmission Line Alignment on Road Allowance - Stage 1	Potential Substation Upgrade	— Crown Land
— Potential 240 kV Transmission Line Alignment on Property - Stage 2	Existing Transmission Line	— Environmentally Significant Area
	Hamlet or Locality	— Military Base
	Residence	— Other Protected Area
	Wellsite	— Urban Area
	Municipal or County Boundary	— Water Body

NO.: XXXXXXXXX
 DRAWN: SG - JACOBS
 FILE NO.: XXXXXXXX
 REVISION: 0.00.00
 AL FOLDER: PENV
DATE: 2019-09-04

Photography dated: 2012 Source: Esri Basemap Imagery
 Although there is no reason to believe that there are any errors associated with the data used to generate this product or in the product itself, users of these data are advised that errors in the data may be present.

0 0.2 0.4 0.6 Kilometres
 0 0.1 0.2 0.3 Miles

STRIP MOSAIC SM16

ALTALINK
 A BERKSHIRE HATHAWAY ENERGY COMPANY

POTENTIAL
 Provost to Edgerton and Niirem to Vermilion Transmission Development
 Provost to Edgerton Component

NOTES

NOTES IN THIS SECTION DESCRIBE COMMENTS AND MODIFICATIONS THAT PERTAIN TO A SPECIFIC SECTION OF THE TRANSMISSION ROUTE
 Where the transmission line alignment appears to be on quarter line, the intent is to have the structure straddle the quarter line. Where located on property, a 20 - 34 m right-of-way will be required, depending on the structure type used.



LEGEND

- Point Designation
- Existing Substation
- Potential 240 kV Transmission Line Alignment on Road Allowance - Stage 2
- Potential 240 kV Transmission Line Alignment on Property - Stage 1
- Potential 240 kV Transmission Line Alignment on Road Allowance - Stage 1
- Potential 240 kV Transmission Line Alignment on Property - Stage 2
- Potential 240 kV Transmission Line Alignment on Road Allowance - Stage 2
- Potential Substation Fenceline Expansion
- Fenceline
- Potential Substation Upgrade
- Existing Transmission Line
- Hamlet or Locality
- Residence
- Wellsite
- Municipal or County Boundary
- Pipeline
- Road
- Railway
- Crown Land
- Environmentally Significant Area
- Military Base
- Other Protected Area
- Urban Area
- Water Body

NO.: XXXXXXXXX
 DRAWN: SG - JACOBS
 FILE NO.: XXXXXXXX
 REVISION: 0.00.00
 AL FOLDER: PENV
DATE: 2019-09-04

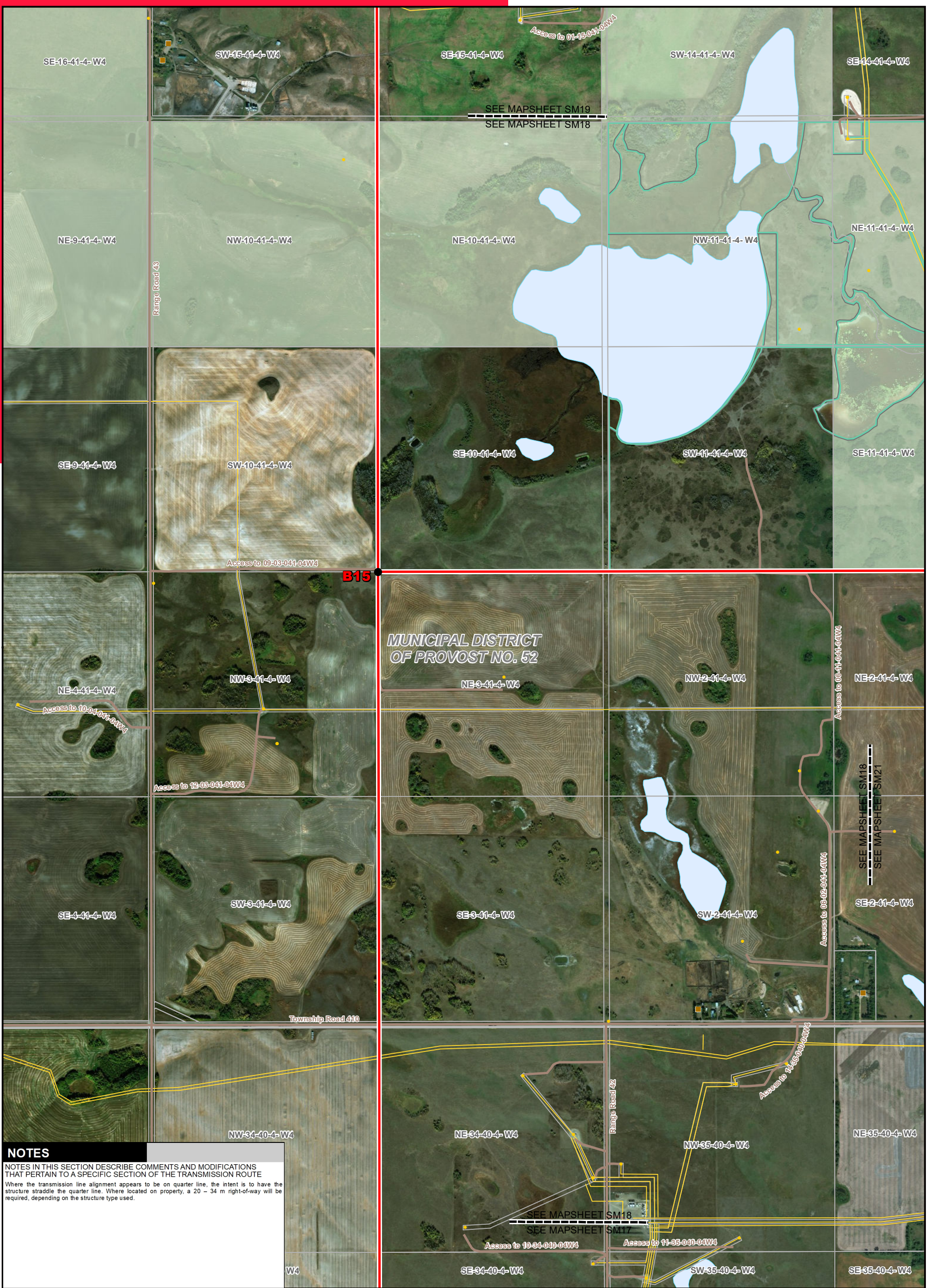
Photography dated: 2012 Source: Esri Basemap Imagery
 Although there is no reason to believe that there are any errors associated with the data used to generate this product or in the product itself, users of these data are advised that errors in the data may be present.

0 0.2 0.4 0.6 Kilometres
 0 0.1 0.2 0.3 Miles

STRIP MOSAIC SM17

ALTALINK
 A BERKSHIRE HATHAWAY ENERGY COMPANY

POTENTIAL
 Provost to Edgerton and Niirem to Vermilion
 Transmission Development
 Provost to Edgerton Component



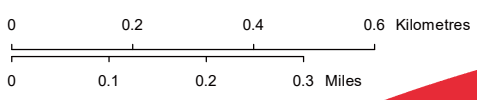
NOTES

NOTES IN THIS SECTION DESCRIBE COMMENTS AND MODIFICATIONS THAT PERTAIN TO A SPECIFIC SECTION OF THE TRANSMISSION ROUTE

Where the transmission line alignment appears to be on quarter line, the intent is to have the structure straddle the quarter line. Where located on property, a 20 - 34 m right-of-way will be required, depending on the structure type used.

LEGEND	
● Point Designation	Potential 240 kV Transmission Line Alignment on Road Allowance - Stage 2
■ Existing Substation	Potential Substation Fenceline Expansion
— Potential 240 kV Transmission Line Alignment on Property - Stage 1	Fenceline
— Potential 240 kV Transmission Line Alignment on Road Allowance - Stage 1	Potential Substation Upgrade
— Potential 240 kV Transmission Line Alignment on Property - Stage 2	Existing Transmission Line
● Hamlet or Locality	Residence
● Wellsite	Wellsite
— Municipal or County Boundary	— Municipal or County Boundary
— Pipeline	Road
— Railway	Crown Land
— Environmentally Significant Area	Military Base
— Other Protected Area	Urban Area
— Water Body	Water Body

NO.: XXXXXXXXX
 DRAWN: SG - JACOBS
 FILE NO.: XXXXXXX
 REVISION: 0.00.00
 AL FOLDER: PENV
DATE: 2019-09-04



Photography dated: 2012 Source: Esri Basemap Imagery
 Although there is no reason to believe that there are any errors associated with the data used to generate this product or in the product itself, users of these data are advised that errors in the data may be present.

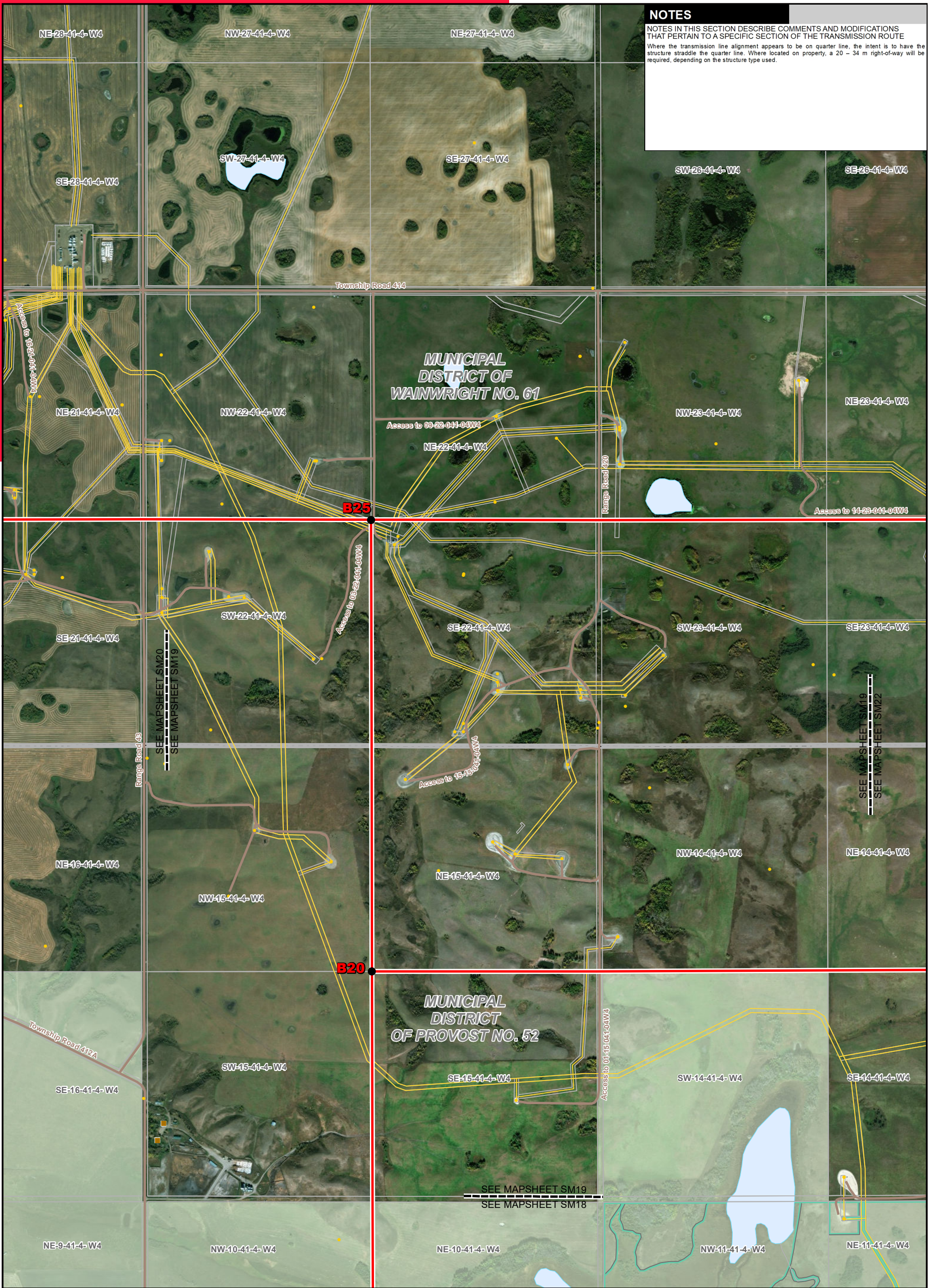
STRIP MOSAIC **SM18**



POTENTIAL
 Provost to Edgerton and Niirem to Vermilion
 Transmission Development
 Provost to Edgerton Component

NOTES

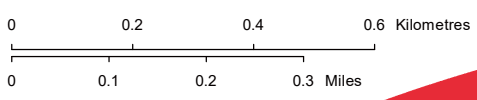
NOTES IN THIS SECTION DESCRIBE COMMENTS AND MODIFICATIONS THAT PERTAIN TO A SPECIFIC SECTION OF THE TRANSMISSION ROUTE
 Where the transmission line alignment appears to be on quarter line, the intent is to have the structure straddle the quarter line. Where located on property, a 20 - 34 m right-of-way will be required, depending on the structure type used.



LEGEND

- Point Designation
- Existing Substation
- Potential 240 kV Transmission Line Alignment on Road Allowance - Stage 2
- Potential 240 kV Transmission Line Alignment on Property - Stage 1
- Potential 240 kV Transmission Line Alignment on Road Allowance - Stage 1
- Potential 240 kV Transmission Line Alignment on Property - Stage 2
- Potential Substation Fenceline Expansion
- Fenceline
- Potential Substation Upgrade
- Existing Transmission Line
- Hamlet or Locality
- Residence
- Wellsite
- Municipal or County Boundary
- Pipeline
- Road
- Railway
- Crown Land
- Environmentally Significant Area
- Military Base
- Other Protected Area
- Urban Area
- Water Body

NO.: XXXXXXXXX
 DRAWN: SG - JACOBS
 FILE NO.: XXXXXXX
 REVISION: 0.00.00
 AL FOLDER: PENV
DATE: 2019-09-04



Photography dated: 2012 Source: Esri Basemap Imagery
 Although there is no reason to believe that there are any errors associated with the data used to generate this product or in the product itself, users of these data are advised that errors in the data may be present.

STRIP MOSAIC SM19



POTENTIAL
 Provost to Edgerton and Niirem to Vermilion
 Transmission Development
 Provost to Edgerton Component

NOTES

NOTES IN THIS SECTION DESCRIBE COMMENTS AND MODIFICATIONS THAT PERTAIN TO A SPECIFIC SECTION OF THE TRANSMISSION ROUTE

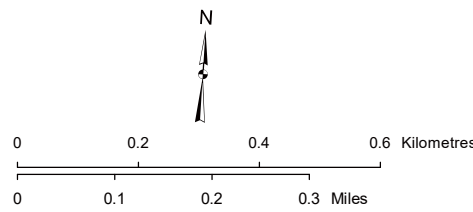
Where the transmission line alignment appears to be on quarter line, the intent is to have the structure straddle the quarter line. Where located on property, a 20 - 34 m right-of-way will be required, depending on the structure type used.



LEGEND

- Point Designation
- Existing Substation
- Potential 240 kV Transmission Line Alignment on Property - Stage 1
- Potential 240 kV Transmission Line Alignment on Road Allowance - Stage 1
- Potential 240 kV Transmission Line Alignment on Property - Stage 2
- Potential 240 kV Transmission Line Alignment on Road Allowance - Stage 2
- Potential Substation Upgrade
- Potential Substation Fenceline Expansion
- Fenceline
- Existing Transmission Line
- Hamlet or Locality
- Residence
- Wellsite
- Pipeline
- Railway
- Road
- Municipal or County Boundary
- Environmentally Significant Area
- Military Base
- Other Protected Area
- Crown Land
- Urban Area
- Water Body

NO: XXXXXXXXXXXX
DRAWN: SG - JACOBS
FILE NO.: XXXXXXXX
REVISION: 0.00.00
AL FOLDER: PENV
DATE: 2019-09-04

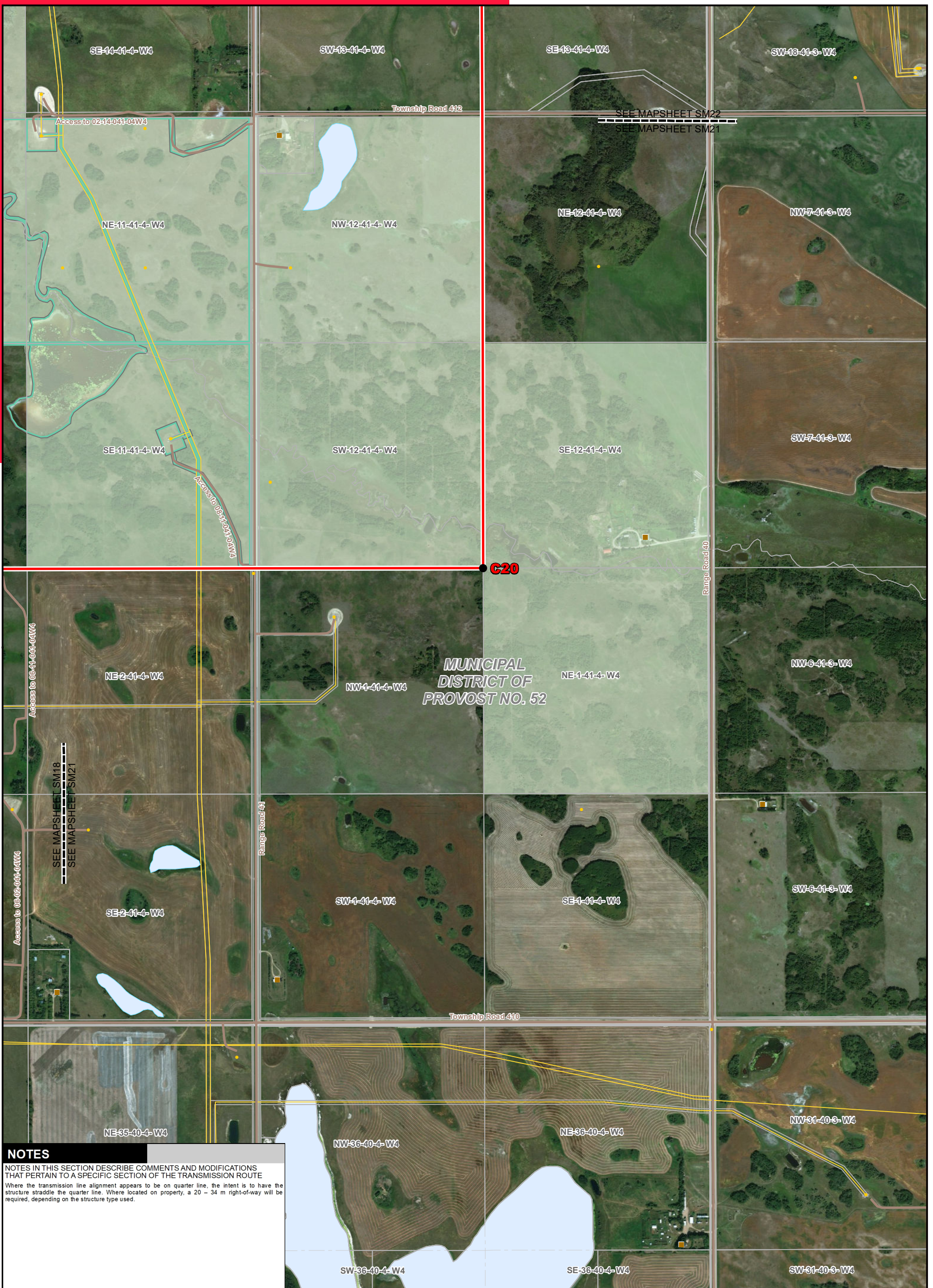


Photography dated: 2012 Source: Esri Basemap Imagery
Although there is no reason to believe that there are any errors associated with the data used to generate this product or in the product itself, users of these data are advised that errors in the data may be present.

STRIP MOSAIC SM20



POTENTIAL
Provost to Edgerton and Nilrem to Vermilion
Transmission Development
Provost to Edgerton Component



NOTES

NOTES IN THIS SECTION DESCRIBE COMMENTS AND MODIFICATIONS THAT PERTAIN TO A SPECIFIC SECTION OF THE TRANSMISSION ROUTE

Where the transmission line alignment appears to be on quarter line, the intent is to have the structure straddle the quarter line. Where located on property, a 20 - 34 m right-of-way will be required, depending on the structure type used.

LEGEND

● Point Designation	Potential 240 kV Transmission	— Pipeline
■ Existing Substation	— Line Alignment on Road Allowance - Stage 2	— Road
— Potential 240 kV Transmission Line Alignment on Property - Stage 1	— Potential Substation Fenceline Expansion	— Railway
— Potential 240 kV Transmission Line Alignment on Road Allowance - Stage 1	— Fenceline	— Crown Land
— Potential 240 kV Transmission Line Alignment on Property - Stage 2	— Potential Substation Upgrade	— Environmentally Significant Area
	— Existing Transmission Line	— Military Base
	● Hamlet or Locality	— Other Protected Area
	■ Residence	— Urban Area
	● Wellsite	— Water Body
	— Municipal or County Boundary	

NO.: XXXXXXXXX
 DRAWN: SG - JACOBS
 FILE NO.: XXXXXXX
 REVISION: 0.00.00
 AL FOLDER: PENV
DATE: 2019-09-04

Photography dated: 2012 Source: Esri Basemap Imagery
 Although there is no reason to believe that there are any errors associated with the data used to generate this product or in the product itself, users of these data are advised that errors in the data may be present.

0 0.2 0.4 0.6 Kilometres
 0 0.1 0.2 0.3 Miles

N

STRIP MOSAIC SM21

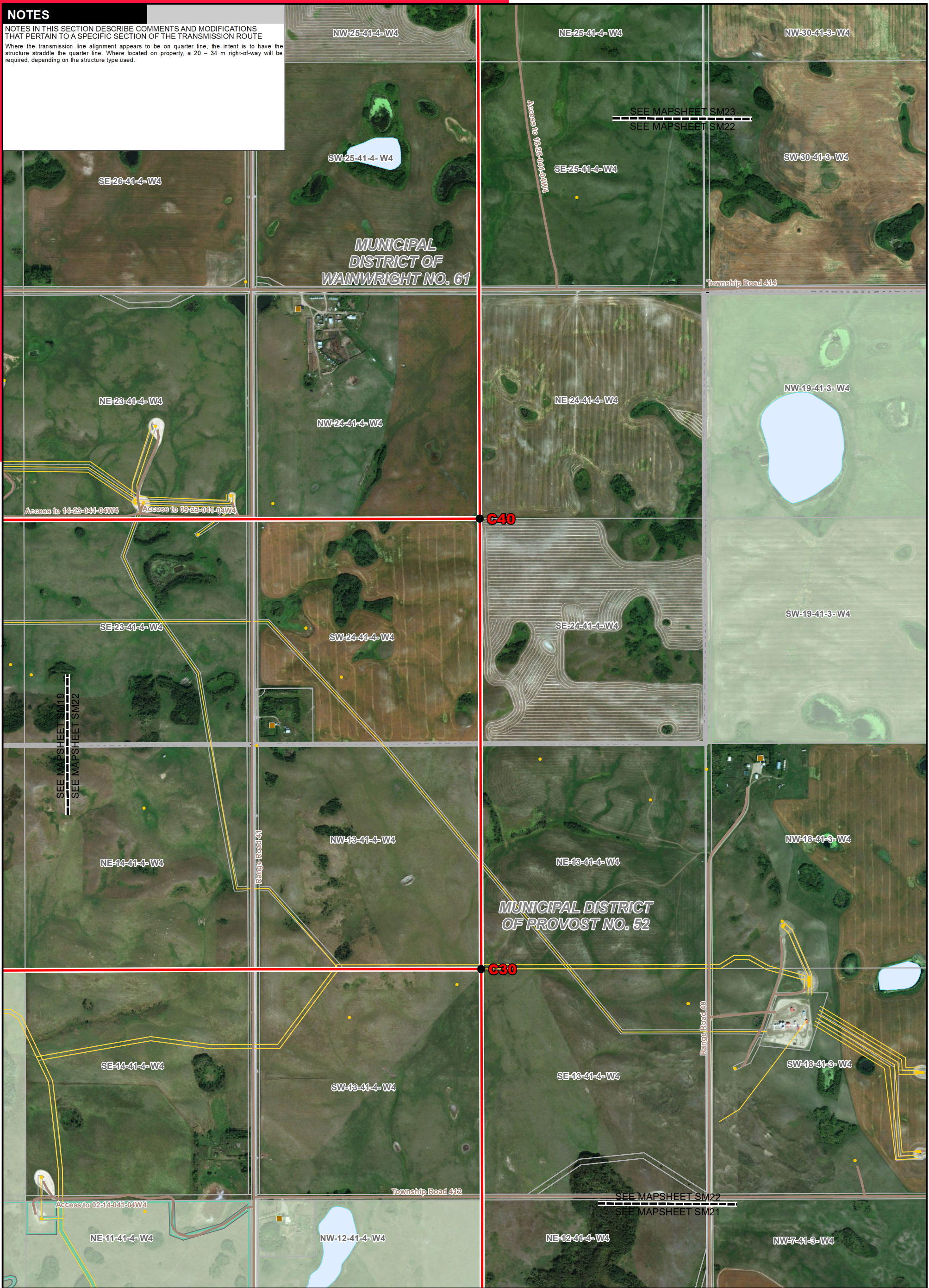
ALTALINK
 A BERKSHIRE HATHAWAY ENERGY COMPANY

POTENTIAL
 Provost to Edgerton and Niirem to Vermilion Transmission Development
 Provost to Edgerton Component

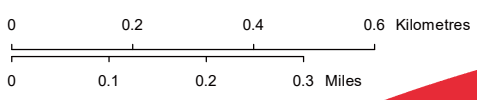
NOTES

NOTES IN THIS SECTION DESCRIBE COMMENTS AND MODIFICATIONS THAT PERTAIN TO A SPECIFIC SECTION OF THE TRANSMISSION ROUTE

Where the transmission line alignment appears to be on quarter line, the intent is to have the structure straddle the quarter line. Where located on property, a 20 - 34 m right-of-way will be required, depending on the structure type used.



NO.: XXXXXXXXX
 DRAWN: SG - JACOBS
 FILE NO.: XXXXXXX
 REVISION: 0.00.00
 AL FOLDER: PENV
DATE: 2019-09-04



Photography dated: 2012 Source: Esri Basemap Imagery
 Although there is no reason to believe that there are any errors associated with the data used to generate this product or in the product itself, users of these data are advised that errors in the data may be present.

STRIP MOSAIC SM22



POTENTIAL
 Provost to Edgerton and Niirem to Vermilion
 Transmission Development
 Provost to Edgerton Component



NOTES

NOTES IN THIS SECTION DESCRIBE COMMENTS AND MODIFICATIONS THAT PERTAIN TO A SPECIFIC SECTION OF THE TRANSMISSION ROUTE

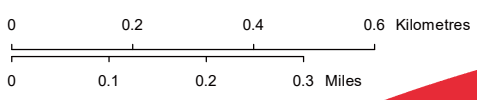
Where the transmission line alignment appears to be on quarter line, the intent is to have the structure straddle the quarter line. Where located on property, a 20 - 34 m right-of-way will be required, depending on the structure type used.

At C50, an airbreak structure will be required to connect the proposed transmission line to the existing 749AL transmission line.

LEGEND

● Point Designation	Potential 240 kV Transmission Line Alignment on Road Allowance - Stage 2	— Pipeline
■ Existing Substation	Potential Substation Fenceline Expansion	— Road
— Potential 240 kV Transmission Line Alignment on Property - Stage 1	Fenceline	— Railway
— Potential 240 kV Transmission Line Alignment on Road Allowance - Stage 1	Potential Substation Upgrade	— Crown Land
— Potential 240 kV Transmission Line Alignment on Property - Stage 2	Existing Transmission Line	— Environmentally Significant Area
	Hamlet or Locality	— Military Base
	Residence	— Other Protected Area
	Wellsite	— Urban Area
	— Municipal or County Boundary	— Water Body

NO.: XXXXXXXXX
 DRAWN: SG - JACOBS
 FILE NO.: XXXXXXX
 REVISION: 0.00.00
 AL FOLDER: PENV
DATE: 2019-09-04



Photography dated: 2012 Source: Esri Basemap Imagery
 Although there is no reason to believe that there are any errors associated with the data used to generate this product or in the product itself, users of these data are advised that errors in the data may be present.

STRIP MOSAIC SM23



POTENTIAL
 Provost to Edgerton and Niirem to Vermilion
 Transmission Development
 Provost to Edgerton Component



NOTES

NOTES IN THIS SECTION DESCRIBE COMMENTS AND MODIFICATIONS THAT PERTAIN TO A SPECIFIC SECTION OF THE TRANSMISSION ROUTE

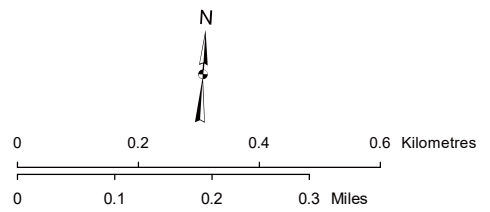
Where the transmission line alignment appears to be on quarter line, the intent is to have the structure straddle the quarter line. Where located on property, a 20 – 34 m right-of-way will be required, depending on the structure type used.

Where the transmission line alignment appears to parallel road allowance, a structure could be placed 1 m in road allowance, or straddle the road allowance boundary if an H-frame structure is selected. Where located in road allowance, an 11 – 20 m right-of-way will be required, depending on the structure type used.

LEGEND

- Point Designation
- Existing Substation
- Potential 240 kV Transmission Line Alignment on Property - Stage 1
- Potential 240 kV Transmission Line Alignment on Road Allowance - Stage 1
- Potential 240 kV Transmission Line Alignment on Property - Stage 2
- Potential 240 kV Transmission Line Alignment on Road Allowance - Stage 2
- Potential Substation Upgrade
- Potential Substation Fenceline Expansion
- Fenceline
- Existing Transmission Line
- Hamlet or Locality
- Residence
- Wellsite
- Pipeline
- Railway
- Road
- Municipal or County Boundary
- Environmentally Significant Area
- Military Base
- Other Protected Area
- Crown Land
- Urban Area
- Water Body

NO: XXXXXXXXXXXX
 DRAWN: SG - JACOBS
 FILE NO.: XXXXXXXX
 REVISION: 0.00.00
 AL FOLDER: PENV
DATE: 2019-09-04



Photography dated: 2012 Source: Esri Basemap Imagery
 Although there is no reason to believe that there are any errors associated with the data used to generate this product or in the product itself, users of these data are advised that errors in the data may be present.

STRIP MOSAIC SM24



POTENTIAL
 Provost to Edgerton and Nilrem to Vermilion Transmission Development
 Provost to Edgerton Component



NOTES

NOTES IN THIS SECTION DESCRIBE COMMENTS AND MODIFICATIONS THAT PERTAIN TO A SPECIFIC SECTION OF THE TRANSMISSION ROUTE

Where the transmission line alignment appears to be on quarter line, the intent is to have the structure straddle the quarter line. Where located on property, a 20 - 34 m right-of-way will be required, depending on the structure type used.

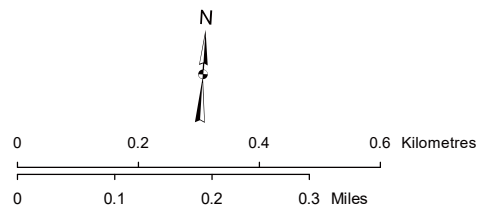
Where the transmission line alignment appears to parallel road allowance, a structure could be placed 1 m in road allowance, or straddle the road allowance boundary if an H-frame structure is selected. Where located in road allowance, an 11 - 20 m right-of-way will be required, depending on the structure type used.

Where the transmission line alignment appears to parallel existing transmission lines, the intent is for the centerline to be offset from the existing transmission line by approximately 18 - 28 m depending on the structure used, and the size and location of the adjacent line.

LEGEND

- Point Designation
- Existing Substation
- Potential 240 kV Transmission Line Alignment on Property - Stage 1
- Potential 240 kV Transmission Line Alignment on Road Allowance - Stage 1
- Potential 240 kV Transmission Line Alignment on Property - Stage 2
- Potential 240 kV Transmission Line Alignment on Road Allowance - Stage 2
- ▭ Potential Substation Upgrade
- ▭ Potential Substation Fenceline Expansion
- ▭ Fenceline
- Existing Transmission Line
- Hamlet or Locality
- Residence
- Wellsite
- Pipeline
- Railway
- Road
- Municipal or County Boundary
- Environmentally Significant Area
- ▭ Military Base
- ▭ Other Protected Area
- ▭ Crown Land
- ▭ Urban Area
- ▭ Water Body

NO: XXXXXXXXXXXX
 DRAWN: SG - JACOBS
 FILE NO.: XXXXXXXX
 REVISION: 0.00.00
 AL FOLDER: PENV
DATE: 2019-09-04



Photography dated: 2012 Source: Esri Basemap Imagery
 Although there is no reason to believe that there are any errors associated with the data used to generate this product or in the product itself, users of these data are advised that errors in the data may be present.

STRIP MOSAIC SM25



POTENTIAL
 Provost to Edgerton and Nilrem to Vermilion
 Transmission Development
 Provost to Edgerton Component

NOTES

NOTES IN THIS SECTION DESCRIBE COMMENTS AND MODIFICATIONS THAT PERTAIN TO A SPECIFIC SECTION OF THE TRANSMISSION ROUTE

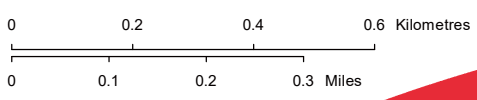
Where the transmission line alignment appears to parallel road allowance, a structure could be placed 1 m in road allowance, or straddle the road allowance boundary if an H-frame structure is selected. Where located in road allowance, an 11 – 20 m right-of-way will be required, depending on the structure type used.



LEGEND

● Point Designation	Potential 240 kV Transmission Line Alignment on Road Allowance - Stage 2	— Pipeline
■ Existing Substation	Potential Substation Fenceline Expansion	— Road
— Potential 240 kV Transmission Line Alignment on Property - Stage 1	Fenceline	— Railway
— Potential 240 kV Transmission Line Alignment on Road Allowance - Stage 1	Potential Substation Upgrade	— Crown Land
— Potential 240 kV Transmission Line Alignment on Property - Stage 2	Existing Transmission Line	— Environmentally Significant Area
	Hamlet or Locality	— Military Base
	Residence	— Other Protected Area
	Wellsite	— Urban Area
	Municipal or County Boundary	— Water Body

NO.: XXXXXXXXX
 DRAWN: SG - JACOBS
 FILE NO.: XXXXXXXX
 REVISION: 0.00.00
 AL FOLDER: PENV
DATE: 2019-09-04



Photography dated: 2012 Source: Esri Basemap Imagery
 Although there is no reason to believe that there are any errors associated with the data used to generate this product or in the product itself, users of these data are advised that errors in the data may be present.

STRIP MOSAIC SM26



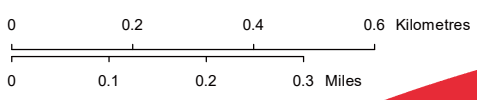
POTENTIAL
 Provost to Edgerton and Niirem to Vermilion
 Transmission Development
 Provost to Edgerton Component



NOTES
 NOTES IN THIS SECTION DESCRIBE COMMENTS AND MODIFICATIONS THAT PERTAIN TO A SPECIFIC SECTION OF THE TRANSMISSION ROUTE
 Where the transmission line alignment appears to parallel road allowance, a structure could be placed 1 m in road allowance, or straddle the road allowance boundary if an H-frame structure is selected. Where located in road allowance, an 11 – 20 m right-of-way will be required, depending on the structure type used.

- LEGEND**
- Point Designation
 - Existing Substation
 - Potential 240 kV Transmission Line Alignment on Property - Stage 1
 - Potential 240 kV Transmission Line Alignment on Road Allowance - Stage 1
 - Potential 240 kV Transmission Line Alignment on Property - Stage 2
 - Potential 240 kV Transmission Line Alignment on Road Allowance - Stage 2
 - Potential Substation Fenceline Expansion
 - Fenceline
 - Potential Substation Upgrade
 - Existing Transmission Line
 - Hamlet or Locality
 - Residence
 - Wellsite
 - Municipal or County Boundary
 - Pipeline
 - Road
 - Railway
 - Crown Land
 - Environmentally Significant Area
 - Military Base
 - Other Protected Area
 - Urban Area
 - Water Body

NO.: XXXXXXXXX
 DRAWN: SG - JACOBS
 FILE NO.: XXXXXXXX
 REVISION: 0.00.00
 AL FOLDER: PENV
DATE: 2019-09-04



Photography dated: 2012 Source: Esri Basemap Imagery
 Although there is no reason to believe that there are any errors associated with the data used to generate this product or in the product itself, users of these data are advised that errors in the data may be present.

STRIP MOSAIC SM27



POTENTIAL
 Provost to Edgerton and Niirem to Vermilion
 Transmission Development
 Provost to Edgerton Component

NOTES

NOTES IN THIS SECTION DESCRIBE COMMENTS AND MODIFICATIONS THAT PERTAIN TO A SPECIFIC SECTION OF THE TRANSMISSION ROUTE

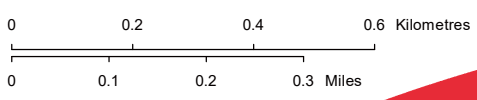
Where the transmission line alignment appears to parallel road allowance, a structure could be placed 1 m in road allowance, or straddle the road allowance boundary if an H-frame structure is selected. Where located in road allowance, an 11 – 20 m right-of-way will be required, depending on the structure type used.



LEGEND

- Point Designation
- Existing Substation
- Potential 240 kV Transmission Line Alignment on Property - Stage 1
- Potential 240 kV Transmission Line Alignment on Road Allowance - Stage 1
- Potential 240 kV Transmission Line Alignment on Property - Stage 2
- Potential 240 kV Transmission Line Alignment on Road Allowance - Stage 2
- Potential Substation Fenceline Expansion
- Fenceline
- Potential Substation Upgrade
- Existing Transmission Line
- Hamlet or Locality
- Residence
- Wellsite
- Municipal or County Boundary
- Pipeline
- Road
- Railway
- Crown Land
- Environmentally Significant Area
- Military Base
- Other Protected Area
- Urban Area
- Water Body

NO.: XXXXXXXXX
 DRAWN: SG - JACOBS
 FILE NO.: XXXXXXX
 REVISION: 0.00.00
 AL FOLDER: PENV
DATE: 2019-09-04

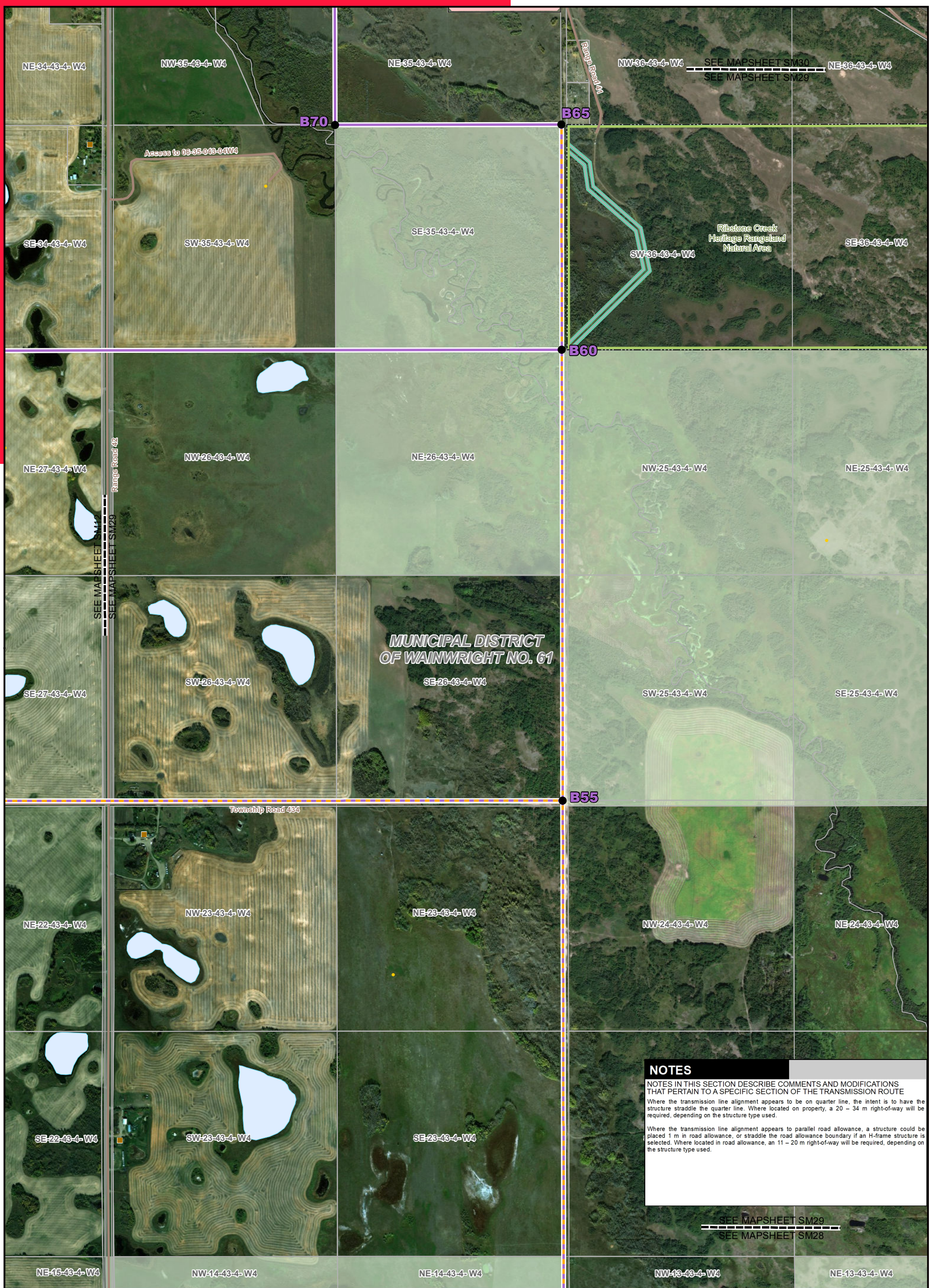


Photography dated: 2012 Source: Esri Basemap Imagery
 Although there is no reason to believe that there are any errors associated with the data used to generate this product or in the product itself, users of these data are advised that errors in the data may be present.

STRIP MOSAIC SM28



POTENTIAL
 Provost to Edgerton and Niirem to Vermilion Transmission Development
 Provost to Edgerton Component



NOTES

NOTES IN THIS SECTION DESCRIBE COMMENTS AND MODIFICATIONS THAT PERTAIN TO A SPECIFIC SECTION OF THE TRANSMISSION ROUTE

Where the transmission line alignment appears to be on quarter line, the intent is to have the structure straddle the quarter line. Where located on property, a 20 – 34 m right-of-way will be required, depending on the structure type used.

Where the transmission line alignment appears to parallel road allowance, a structure could be placed 1 m in road allowance, or straddle the road allowance boundary if an H-frame structure is selected. Where located in road allowance, an 11 – 20 m right-of-way will be required, depending on the structure type used.

LEGEND

- Point Designation
- Existing Substation
- Potential 240 kV Transmission Line Alignment on Property - Stage 1
- Potential 240 kV Transmission Line Alignment on Road Allowance - Stage 1
- Potential 240 kV Transmission Line Alignment on Property - Stage 2
- Potential 240 kV Transmission Line Alignment on Road Allowance - Stage 2
- Potential Substation Fenceline Expansion
- Fenceline
- Potential Substation Upgrade
- Existing Transmission Line
- Hamlet or Locality
- Residence
- Wellsite
- Municipal or County Boundary
- Pipeline
- Road
- Railway
- Crown Land
- Environmentally Significant Area
- Military Base
- Other Protected Area
- Urban Area
- Water Body

NO.: XXXXXXXXXX
 DRAWN: SG - JACOBS
 FILE NO.: XXXXXXXX
 REVISION: 0.00.00
 AL FOLDER: PENV
DATE: 2019-09-04

Photography dated: 2012 Source: Esri Basemap Imagery
 Although there is no reason to believe that there are any errors associated with the data used to generate this product or in the product itself, users of these data are advised that errors in the data may be present.

0 0.2 0.4 0.6 Kilometres
 0 0.1 0.2 0.3 Miles

STRIP MOSAIC SM29

ALTALINK
 A BERKSHIRE HATHAWAY ENERGY COMPANY

POTENTIAL
 Provost to Edgerton and Niirem to Vermilion
 Transmission Development
 Provost to Edgerton Component

NOTES

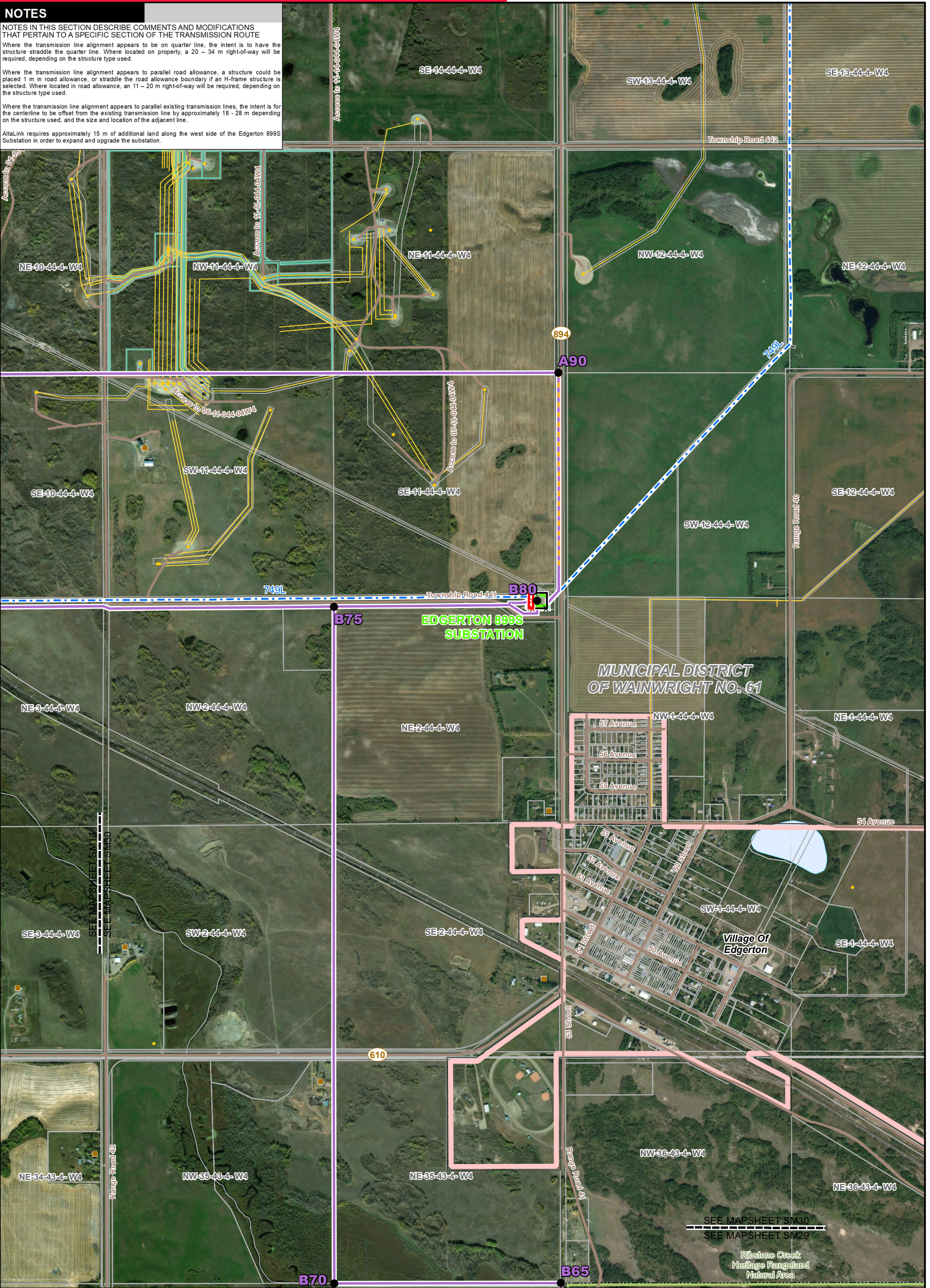
NOTES IN THIS SECTION DESCRIBE COMMENTS AND MODIFICATIONS THAT PERTAIN TO A SPECIFIC SECTION OF THE TRANSMISSION ROUTE

Where the transmission line alignment appears to be on quarter line, the intent is to have the structure straddle the quarter line. Where located on property, a 20 - 34 m right-of-way will be required, depending on the structure type used.

Where the transmission line alignment appears to parallel road allowance, a structure could be placed 1 m in road allowance, or straddle the road allowance boundary if an H-frame structure is selected. Where located in road allowance, an 11 - 20 m right-of-way will be required, depending on the structure type used.

Where the transmission line alignment appears to parallel existing transmission lines, the intent is for the centerline to be offset from the existing transmission line by approximately 18 - 28 m depending on the structure used, and the size and location of the adjacent line.

AltaLink requires approximately 15 m of additional land along the west side of the Edgerton 899S Substation in order to expand and upgrade the substation.



LEGEND

● Point Designation	Potential 240 kV Transmission	— Pipeline
■ Existing Substation	— Line Alignment on Road Allowance - Stage 2	— Road
— Potential 240 kV Transmission Line Alignment on Property - Stage 1	— Potential Substation Fenceline Expansion	— Railway
— Potential 240 kV Transmission Line Alignment on Road Allowance - Stage 1	— Fenceline	— Crown Land
— Potential 240 kV Transmission Line Alignment on Property - Stage 2	— Potential Substation Upgrade	— Environmentally Significant Area
— Existing Transmission Line	● Hamlet or Locality	— Military Base
— Municipal or County Boundary	● Residence	— Other Protected Area
	● Wellsite	— Urban Area
		— Water Body

NO.: XXXXXXXXXX
 DRAWN: SG - JACOBS
 FILE NO.: XXXXXXXX
 REVISION: 0.00.00
 AL FOLDER: PENV
DATE: 2019-09-04

Photography dated: 2012 Source: Esri Basemap Imagery
 Although there is no reason to believe that there are any errors associated with the data used to generate this product or in the product itself, users of these data are advised that errors in the data may be present.

0 0.2 0.4 0.6 Kilometres
 0 0.1 0.2 0.3 Miles

STRIP MOSAIC SM30

ALTALINK
 A BERKSHIRE HATHAWAY ENERGY COMPANY

POTENTIAL
 Provost to Edgerton and Niirem to Vermilion Transmission Development
 Provost to Edgerton Component