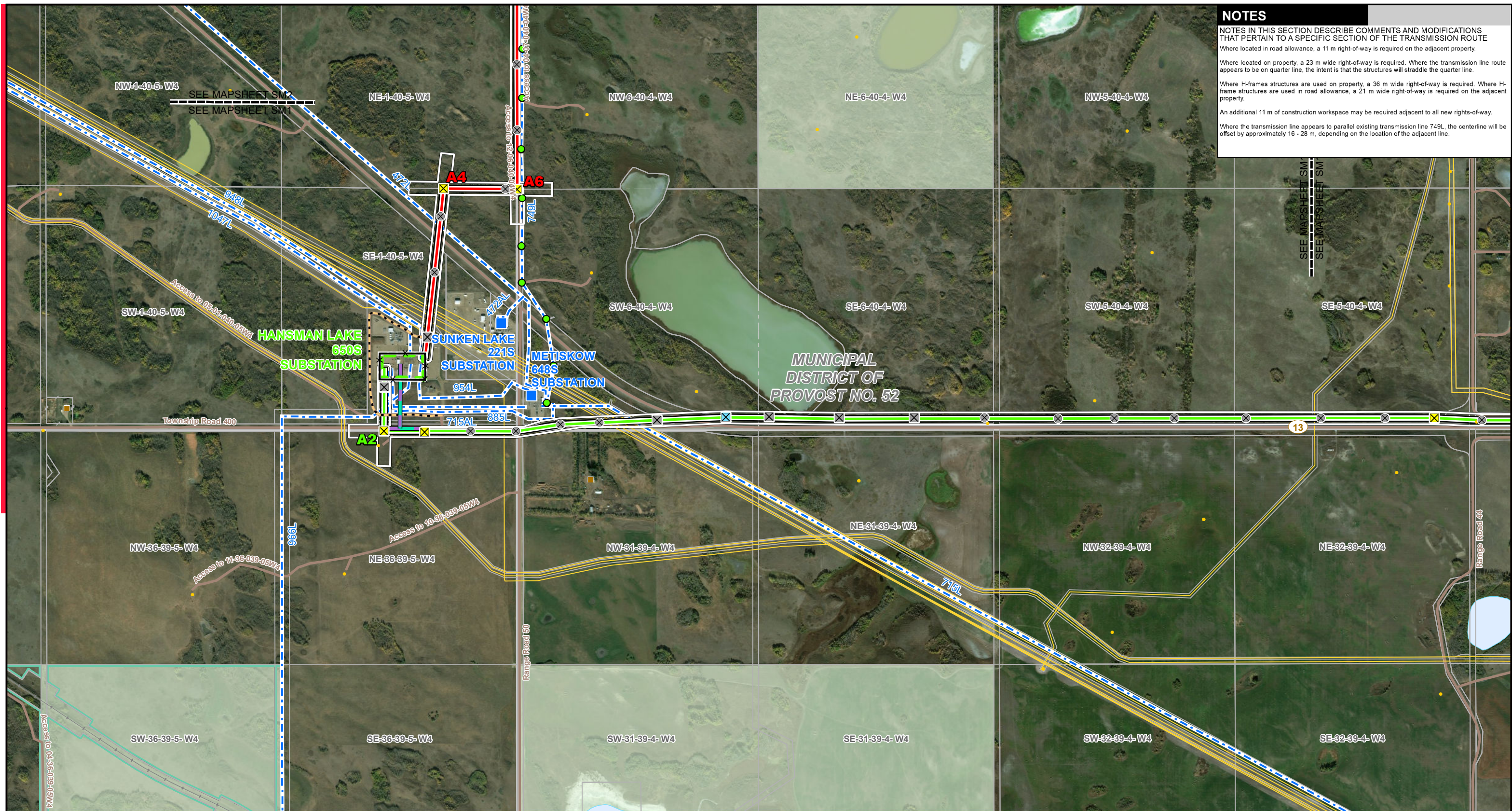


LEGEND			
Potential Substation Expansion	Existing Transmission Line	Other Protected Area	NO.: XXXXXXXXX DRAWN: SG - JACOBS FILE NO.: XXXXXXXX REVISION: 0.00.00 AL FOLDER: PENV DATE: 2020-03-25
Existing Substation	Map Sheet	Urban Area	
Preferred 240 kV Transmission Line Alignment - Stage 1	Hamlet or Locality	Water Body	
Preferred 240 kV Transmission Line Alignment - Stage 2	Municipal or County Boundary		
Alternate 240 kV Transmission Line Alignment - Stage 1	Railway		STRIP INDEX S11 A BERKSHIRE HATHAWAY ENERGY COMPANY POTENTIAL Provost to Edgerton and Niirem to Vermilion Transmission Development Provost to Edgerton Component
Alternate 240 kV Transmission Line Alignment - Stage 2	River or Stream		
Potential Route Variant	Road		
	Military Base		

Although there is no reason to believe that there are any errors associated with the data used to generate this product or in the product itself, users of these data are advised that errors in the data may be present.



NOTES

NOTES IN THIS SECTION DESCRIBE COMMENTS AND MODIFICATIONS THAT PERTAIN TO A SPECIFIC SECTION OF THE TRANSMISSION ROUTE

Where located in road allowance, a 11 m right-of-way is required on the adjacent property

Where located on property, a 23 m wide right-of-way is required. Where the transmission line route appears to be on quarter line, the intent is that the structures will straddle the quarter line.

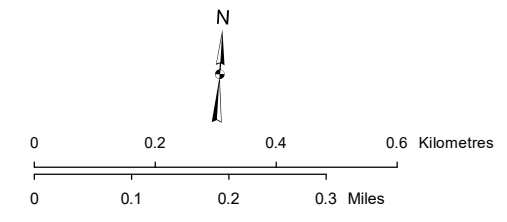
Where H-frame structures are used on property, a 36 m wide right-of-way is required. Where H-frame structures are used in road allowance, a 21 m wide right-of-way is required on the adjacent property.

An additional 11 m of construction workspace may be required adjacent to all new rights-of-way.

Where the transmission line appears to parallel existing transmission line 749L, the centerline will be offset by approximately 16 - 28 m, depending on the location of the adjacent line.

LEGEND	
● Point Designation	Alternate 240 kV Transmission Line Alignment - Stage 1
⊗ Monopole Structure	Alternate 240 kV Transmission Line Alignment - Stage 2
⊗ 2-pole Structure	Potential Route Variant
⊗ 3-pole Structure	Potential Realignment of Existing Transmission Line
⊗ H-frame Structure	Buried Fibre Optic Cable
● Existing Transmission Structure	Potential Access Trail
■ Existing Substation	Existing Transmission Line
— Preferred 240 kV Transmission Line Alignment - Stage 1	Right-of-Way Boundary
— Preferred 240 kV Transmission Line Alignment - Stage 2	Road
□ Potential Construction Workspace	□ Potential Substation Upgrade
□ Potential Substation Upgrade	⊗ Fenceline
⊗ Fenceline	● Hamlet or Locality
● Hamlet or Locality	● Residence
● Residence	● Wellsite
● Wellsite	● Pipeline
● Pipeline	— Railway
— Railway	— Road
— Municipal or County Boundary	— Environmentally Significant Area
— Environmentally Significant Area	— Military Base
— Military Base	— Other Protected Area
— Other Protected Area	— Crown Land
— Crown Land	— Urban Area
— Urban Area	— Water Body
— Water Body	

NO: XXXXXXXXXXXX
 DRAWN: SG - JACOBS
 FILE NO.: XXXXXXXX
 REVISION: 0.00.00
 AL FOLDER: PENV
DATE: 2020-03-25



Photography dated: 2012 Source: Esri Basemap Imagery
 Although there is no reason to believe that there are any errors associated with the data used to generate this product or in the product itself, users of these data are advised that errors in the data may be present.

STRIP MOSAIC **SM1**



POTENTIAL
 Provost to Edgerton and Nilrem to Vermilion
 Transmission Development
 Provost to Edgerton Component

NOTES

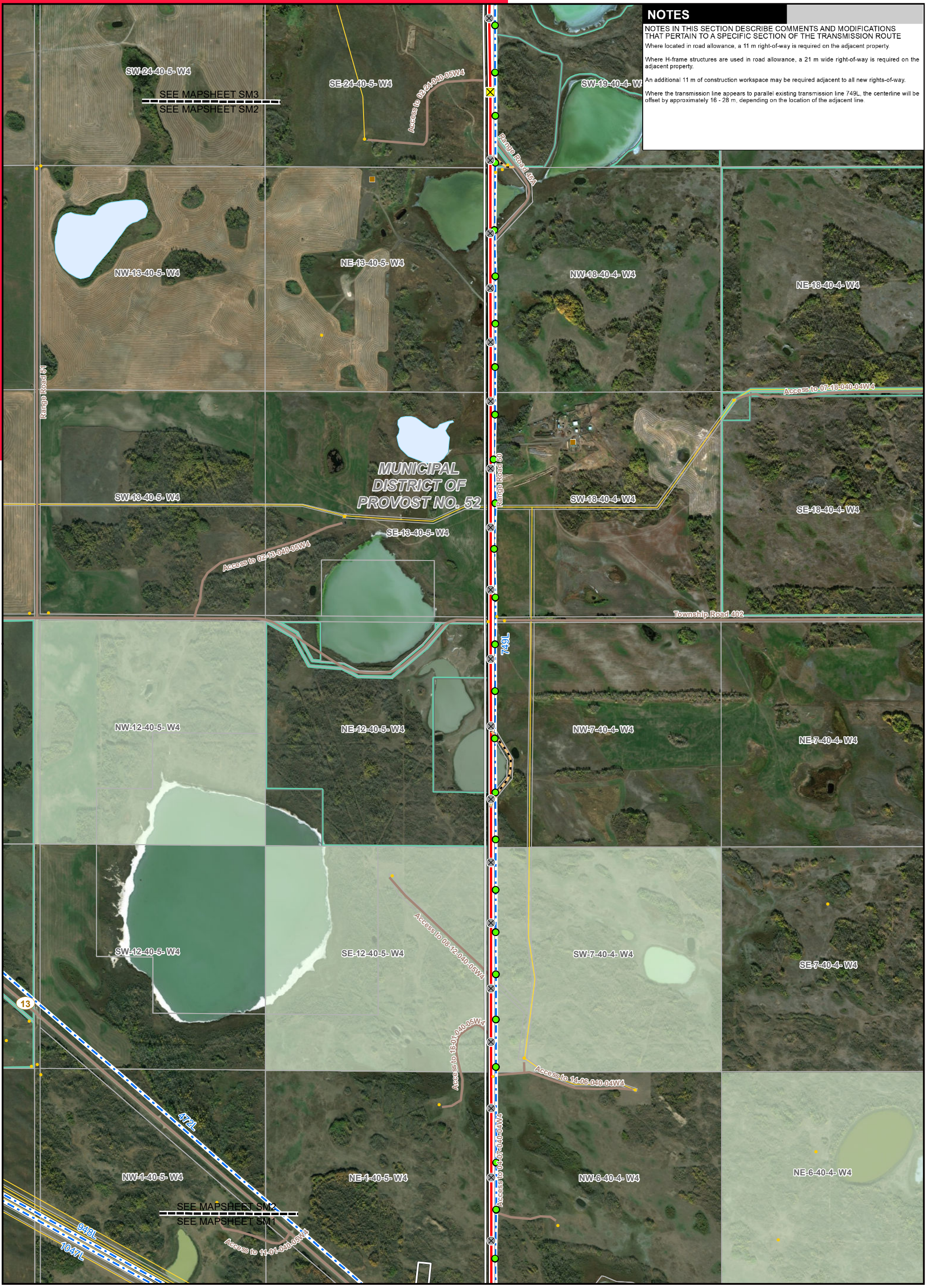
NOTES IN THIS SECTION DESCRIBE COMMENTS AND MODIFICATIONS THAT PERTAIN TO A SPECIFIC SECTION OF THE TRANSMISSION ROUTE

Where located in road allowance, a 11 m right-of-way is required on the adjacent property.

Where H-frame structures are used in road allowance, a 21 m wide right-of-way is required on the adjacent property.

An additional 11 m of construction workspace may be required adjacent to all new rights-of-way.

Where the transmission line appears to parallel existing transmission line 749L, the centerline will be offset by approximately 16 - 28 m, depending on the location of the adjacent line.



LEGEND

● Point Designation	— Preferred 240 kV Transmission Line Alignment - Stage 2	— Right-of-Way Boundary	— Pipeline
⊗ Monopole Structure	— Alternate 240 kV Transmission Line Alignment - Stage 1	— Potential Construction Workspace	— Road
⊗ 2-pole Structure	— Alternate 240 kV Transmission Line Alignment - Stage 2	— Fenceline	— Railway
⊗ 3-pole Structure	— Potential Route Variant	— Potential Substation Upgrade	— Crown Land
⊗ H-frame Structure	— Potential Realignment of Existing Transmission Line	● Hamlet or Locality	— Environmentally Significant Area
● Existing Transmission Structure	— Buried Fibre Optic Cable	● Residence	— Military Base
● Existing Substation	— Potential Access Trail	● Wellsite	— Other Protected Area
— Preferred 240 kV Transmission Line Alignment - Stage 1	— Existing Transmission Line	— Municipal or County Boundary	— Urban Area
			— Water Body

NO.: XXXXXXXXXX
 DRAWN: SG - JACOBS
 FILE NO.: XXXXXXXX
 REVISION: 0.00.00
 AL FOLDER: PENV
DATE: 2020-03-25

0 0.2 0.4 0.6 Kilometres
 0 0.1 0.2 0.3 Miles

Photography dated: 2012 Source: Esri Basemap Imagery
 Although there is no reason to believe that there are any errors associated with the data used to generate this product or in the product itself, users of these data are advised that errors in the data may be present.

STRIP MOSAIC SM2

ALTALINK
 A BERKSHIRE HATHAWAY ENERGY COMPANY

POTENTIAL
 Provost to Edgerton and Niirem to Vermilion Transmission Development
 Provost to Edgerton Component



NOTES

NOTES IN THIS SECTION DESCRIBE COMMENTS AND MODIFICATIONS THAT PERTAIN TO A SPECIFIC SECTION OF THE TRANSMISSION ROUTE

- Where located in road allowance, a 11 m right-of-way is required on the adjacent property.
- An additional 11 m of construction workspace may be required adjacent to all new rights-of-way.
- Where the transmission line appears to parallel existing transmission line 749L, the centerline will be offset by approximately 16 - 28 m, depending on the location of the adjacent line.

LEGEND

● Point Designation	Preferred 240 kV Transmission Line Alignment - Stage 2	— Right-of-Way Boundary	— Pipeline
⊗ Monopole Structure	Alternate 240 kV Transmission Line Alignment - Stage 1	— Potential Construction Workspace	— Road
⊗ 2-pole Structure	Alternate 240 kV Transmission Line Alignment - Stage 2	— Fenceline	— Railway
⊗ 3-pole Structure	Potential Route Variant	— Potential Substation Upgrade	— Crown Land
⊗ H-frame Structure	Potential Realignment of Existing Transmission Line	● Hamlet or Locality	— Environmentally Significant Area
● Existing Transmission Structure	Buried Fibre Optic Cable	● Residence	— Military Base
■ Existing Substation	Potential Access Trail	● Wellsite	— Other Protected Area
— Preferred 240 kV Transmission Line Alignment - Stage 1	— Existing Transmission Line	— Municipal or County Boundary	— Urban Area
			— Water Body

NO.: XXXXXXXXXX
 DRAWN: SG - JACOBS
 FILE NO.: XXXXXXXX
 REVISION: 0.00.00
 AL FOLDER: PENV
DATE: 2020-03-25

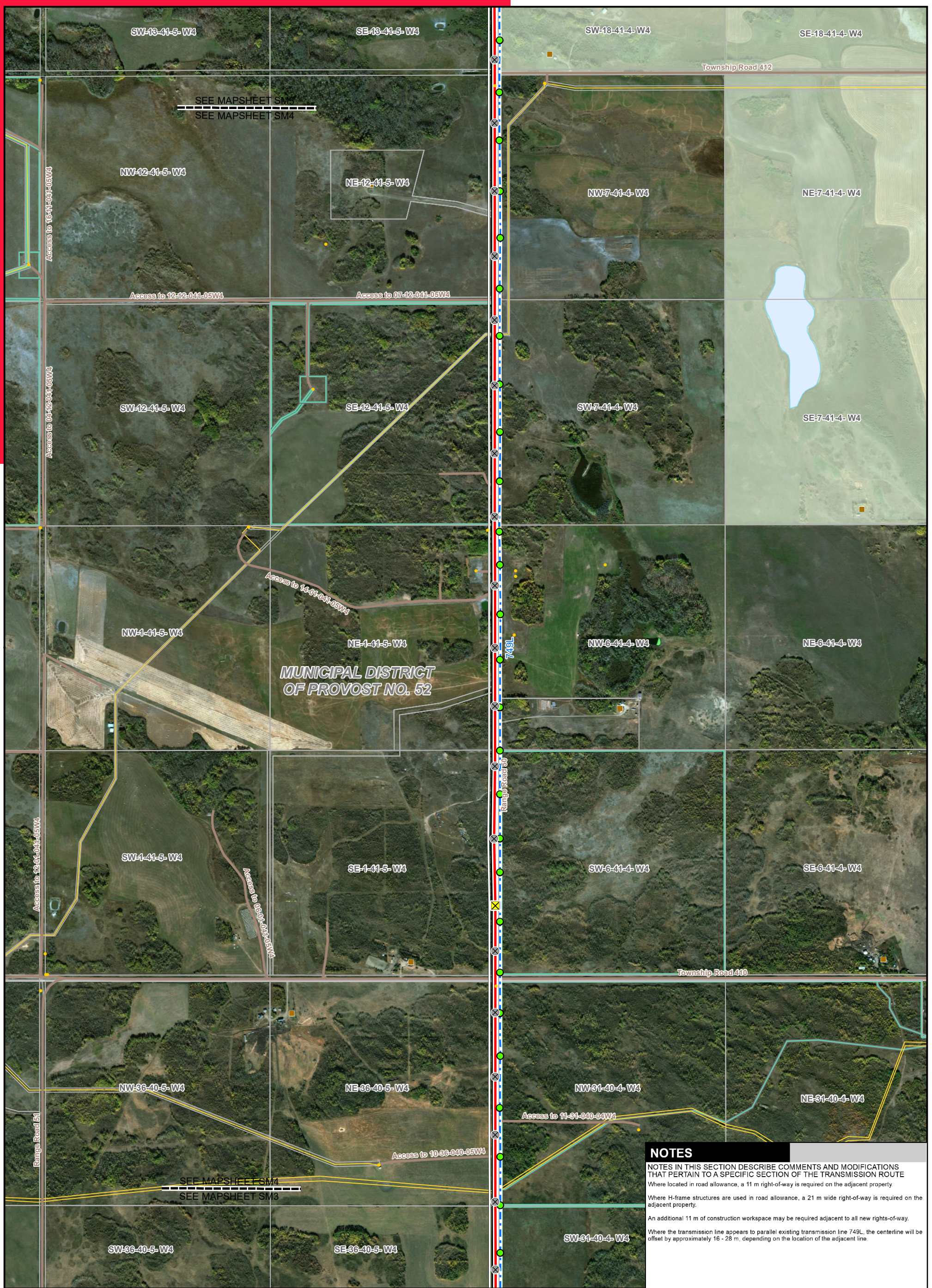
Photography dated: 2012 Source: Esri Basemap Imagery
 Although there is no reason to believe that there are any errors associated with the data used to generate this product or in the product itself, users of these data are advised that errors in the data may be present.

0 0.2 0.4 0.6 Kilometres
 0 0.1 0.2 0.3 Miles

STRIP MOSAIC SM3

ALTALINK
 A BERKSHIRE HATHAWAY ENERGY COMPANY

POTENTIAL
 Provost to Edgerton and Niirem to Vermilion Transmission Development
 Provost to Edgerton Component



NOTES

NOTES IN THIS SECTION DESCRIBE COMMENTS AND MODIFICATIONS THAT PERTAIN TO A SPECIFIC SECTION OF THE TRANSMISSION ROUTE

Where located in road allowance, a 11 m right-of-way is required on the adjacent property.

Where H-frame structures are used in road allowance, a 21 m wide right-of-way is required on the adjacent property.

An additional 11 m of construction workspace may be required adjacent to all new rights-of-way.

Where the transmission line appears to parallel existing transmission line 749L, the centerline will be offset by approximately 16 - 28 m, depending on the location of the adjacent line.

LEGEND	
● Point Designation	Preferred 240 kV Transmission Line Alignment - Stage 2
⊗ Monopole Structure	Alternate 240 kV Transmission Line Alignment - Stage 1
⊗ 2-pole Structure	Alternate 240 kV Transmission Line Alignment - Stage 2
⊗ 3-pole Structure	Potential Route Variant
⊗ H-frame Structure	Potential Realignment of Existing Transmission Line
● Existing Transmission Structure	Buried Fibre Optic Cable
● Existing Substation	Potential Access Trail
● Preferred 240 kV Transmission Line Alignment - Stage 1	Right-of-Way Boundary
— Pipeline	Potential Construction Workspace
— Road	Fenceline
— Railway	Potential Substation Upgrade
— Crown Land	● Hamlet or Locality
— Environmentally Significant Area	● Residence
— Military Base	● Wellsite
— Other Protected Area	— Municipal or County Boundary
— Urban Area	
— Water Body	

NO.: XXXXXXXXXX
 DRAWN: SG - JACOBS
 FILE NO.: XXXXXXXX
 REVISION: 0.00.00
 AL FOLDER: PENV
DATE: 2020-03-25

Photography dated: 2012 Source: Esri Basemap Imagery
 Although there is no reason to believe that there are any errors associated with the data used to generate this product or in the product itself, users of these data are advised that errors in the data may be present.

0 0.2 0.4 0.6 Kilometres
 0 0.1 0.2 0.3 Miles

STRIP MOSAIC SM4

ALTALINK
 A BERKSHIRE HATHAWAY ENERGY COMPANY

POTENTIAL
 Provost to Edgerton and Niirem to Vermilion Transmission Development
 Provost to Edgerton Component



NOTES

NOTES IN THIS SECTION DESCRIBE COMMENTS AND MODIFICATIONS THAT PERTAIN TO A SPECIFIC SECTION OF THE TRANSMISSION ROUTE

Where located in road allowance, a 11 m right-of-way is required on the adjacent property.

Where H-frame structures are used in road allowance, a 21 m wide right-of-way is required on the adjacent property.

An additional 11 m of construction workspace may be required adjacent to all new rights-of-way.

Where the transmission line appears to parallel existing transmission line 749L, the centerline will be offset by approximately 16 - 28 m, depending on the location of the adjacent line.

LEGEND

● Point Designation	Preferred 240 kV Transmission Line Alignment - Stage 2	Right-of-Way Boundary	Pipeline
⊗ Monopole Structure	Alternate 240 kV Transmission Line Alignment - Stage 1	Potential Construction Workspace	Road
⊗ 2-pole Structure	Alternate 240 kV Transmission Line Alignment - Stage 2	Fenceline	Railway
⊗ 3-pole Structure	Potential Route Variant	Potential Substation Upgrade	Crown Land
⊗ H-frame Structure	Potential Realignment of Existing Transmission Line	Hamlet or Locality	Environmentally Significant Area
● Existing Transmission Structure	Buried Fibre Optic Cable	Residence	Military Base
● Existing Substation	Potential Access Trail	Wellsite	Other Protected Area
— Preferred 240 kV Transmission Line Alignment - Stage 1	Existing Transmission Line	Municipal or County Boundary	Urban Area
			Water Body

NO.: XXXXXXXXXX
 DRAWN: SG - JACOBS
 FILE NO.: XXXXXXXX
 REVISION: 0.00.00
 AL FOLDER: PENV
DATE: 2020-03-25

N

0 0.2 0.4 0.6 Kilometres

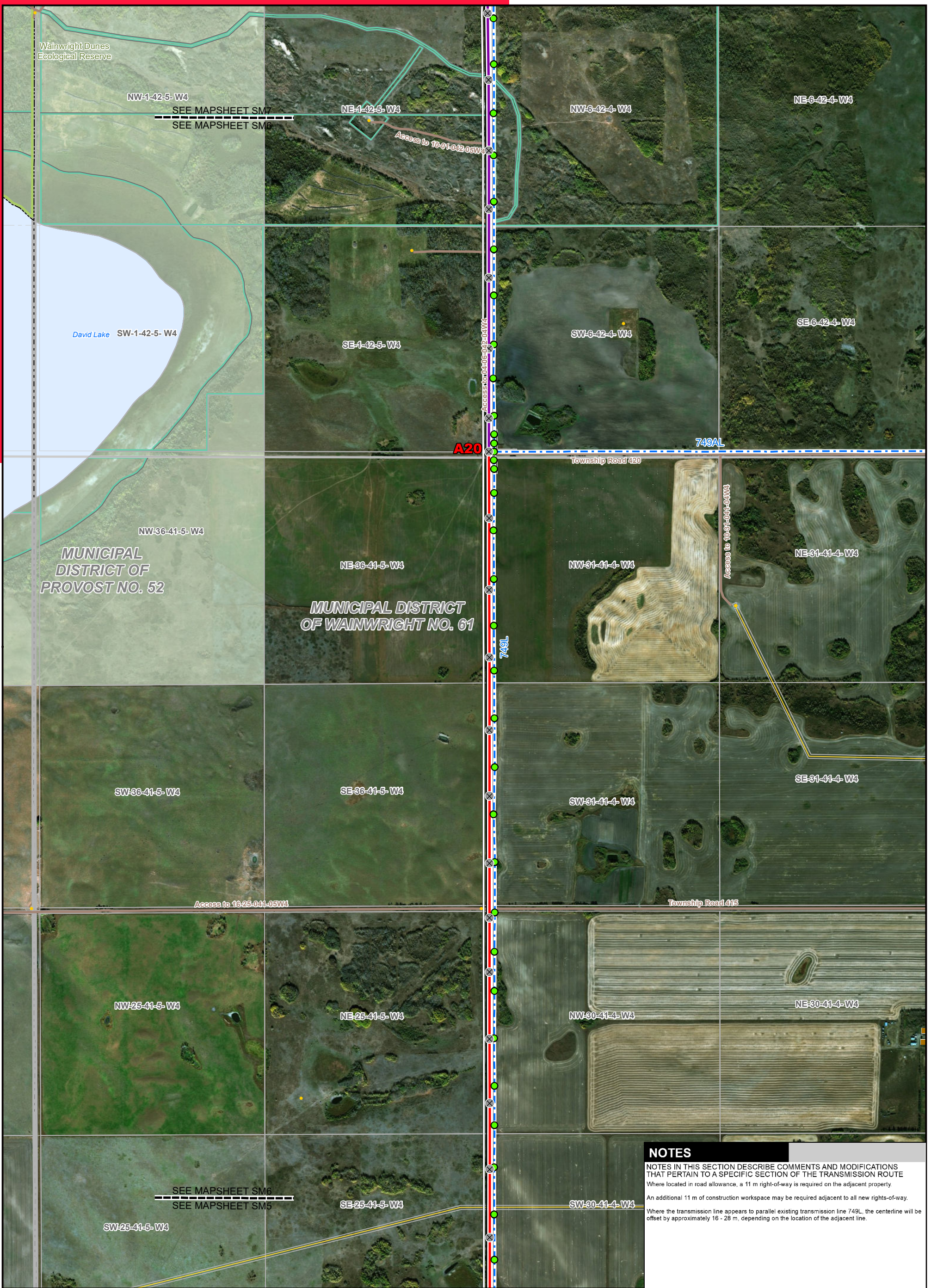
0 0.1 0.2 0.3 Miles

Photography dated: 2012 Source: Esri Basemap Imagery
 Although there is no reason to believe that there are any errors associated with the data used to generate this product or in the product itself, users of these data are advised that errors in the data may be present.

STRIP MOSAIC SM5

ALTALINK
 A BERKSHIRE HATHAWAY ENERGY COMPANY

POTENTIAL
 Provost to Edgerton and Niirem to Vermilion Transmission Development
 Provost to Edgerton Component



NOTES

NOTES IN THIS SECTION DESCRIBE COMMENTS AND MODIFICATIONS THAT PERTAIN TO A SPECIFIC SECTION OF THE TRANSMISSION ROUTE

Where located in road allowance, a 11 m right-of-way is required on the adjacent property.

An additional 11 m of construction workspace may be required adjacent to all new rights-of-way.

Where the transmission line appears to parallel existing transmission line 749L, the centerline will be offset by approximately 16 - 28 m, depending on the location of the adjacent line.

LEGEND	
● Point Designation	Preferred 240 kV Transmission Line Alignment - Stage 2
⊗ Monopole Structure	Alternate 240 kV Transmission Line Alignment - Stage 1
⊗ 2-pole Structure	Alternate 240 kV Transmission Line Alignment - Stage 2
⊗ 3-pole Structure	Potential Route Variant
⊗ H-frame Structure	Potential Realignment of Existing Transmission Line
● Existing Transmission Structure	Buried Fibre Optic Cable
● Existing Substation	Potential Access Trail
— Preferred 240 kV Transmission Line Alignment - Stage 1	— Existing Transmission Line
— Right-of-Way Boundary	— Pipeline
— Potential Construction Workspace	— Road
— Fenceline	— Railway
— Potential Substation Upgrade	— Crown Land
● Hamlet or Locality	— Environmentally Significant Area
● Residence	— Military Base
● Wellsite	— Other Protected Area
— Municipal or County Boundary	— Urban Area
	— Water Body

NO.: XXXXXXXXXX
 DRAWN: SG - JACOBS
 FILE NO.: XXXXXXXX
 REVISION: 0.00.00
 AL FOLDER: PENV
DATE: 2020-03-25

Photography dated: 2012 Source: Esri Basemap Imagery
 Although there is no reason to believe that there are any errors associated with the data used to generate this product or in the product itself, users of these data are advised that errors in the data may be present.

0 0.2 0.4 0.6 Kilometres
 0 0.1 0.2 0.3 Miles

STRIP MOSAIC SM6

ALTALINK
 A BERKSHIRE HATHAWAY ENERGY COMPANY

POTENTIAL
 Provost to Edgerton and Niirem to Vermilion Transmission Development
 Provost to Edgerton Component



NOTES

NOTES IN THIS SECTION DESCRIBE COMMENTS AND MODIFICATIONS THAT PERTAIN TO A SPECIFIC SECTION OF THE TRANSMISSION ROUTE

Where located in road allowance, a 11 m right-of-way is required on the adjacent property.

Where located on property, a 23 m wide right-of-way is required. Where the transmission line route appears to be on quarter line, the intent is that the structures will straddle the quarter line.

Where H-frame structures are used on property, a 36 m wide right-of-way is required. Where H-frame structures are used in road allowance, a 21 m wide right-of-way is required on the adjacent property.

An additional 11 m of construction workspace may be required adjacent to all new rights-of-way.

Where the transmission line appears to parallel existing transmission line 749L, the centerline will be offset by approximately 16 - 28 m, depending on the location of the adjacent line.

LEGEND

● Point Designation	Preferred 240 kV Transmission Line Alignment - Stage 2	— Right-of-Way Boundary	— Pipeline
⊗ Monopole Structure	Alternate 240 kV Transmission Line Alignment - Stage 1	— Potential Construction Workspace	— Road
⊗ 2-pole Structure	Alternate 240 kV Transmission Line Alignment - Stage 2	— Fenceline	— Railway
⊗ 3-pole Structure	Potential Route Variant	— Potential Substation Upgrade	— Crown Land
⊗ H-frame Structure	Potential Realignment of Existing Transmission Line	● Hamlet or Locality	— Environmentally Significant Area
● Existing Transmission Structure	Buried Fibre Optic Cable	● Residence	— Military Base
● Existing Substation	Potential Access Trail	● Wellsite	— Other Protected Area
— Preferred 240 kV Transmission Line Alignment - Stage 1	— Existing Transmission Line	— Municipal or County Boundary	— Urban Area
			— Water Body

NO.: XXXXXXXXXX
 DRAWN: SG - JACOBS
 FILE NO.: XXXXXXXX
 REVISION: 0.00.00
 AL FOLDER: PENV
DATE: 2020-03-25

Photography dated: 2012 Source: Esri Basemap Imagery
 Although there is no reason to believe that there are any errors associated with the data used to generate this product or in the product itself, users of these data are advised that errors in the data may be present.

0 0.2 0.4 0.6 Kilometres
 0 0.1 0.2 0.3 Miles

STRIP MOSAIC SM7

ALTALINK
 A BERKSHIRE HATHAWAY ENERGY COMPANY

POTENTIAL
 Provost to Edgerton and Niirem to Vermilion Transmission Development
 Provost to Edgerton Component

NOTES

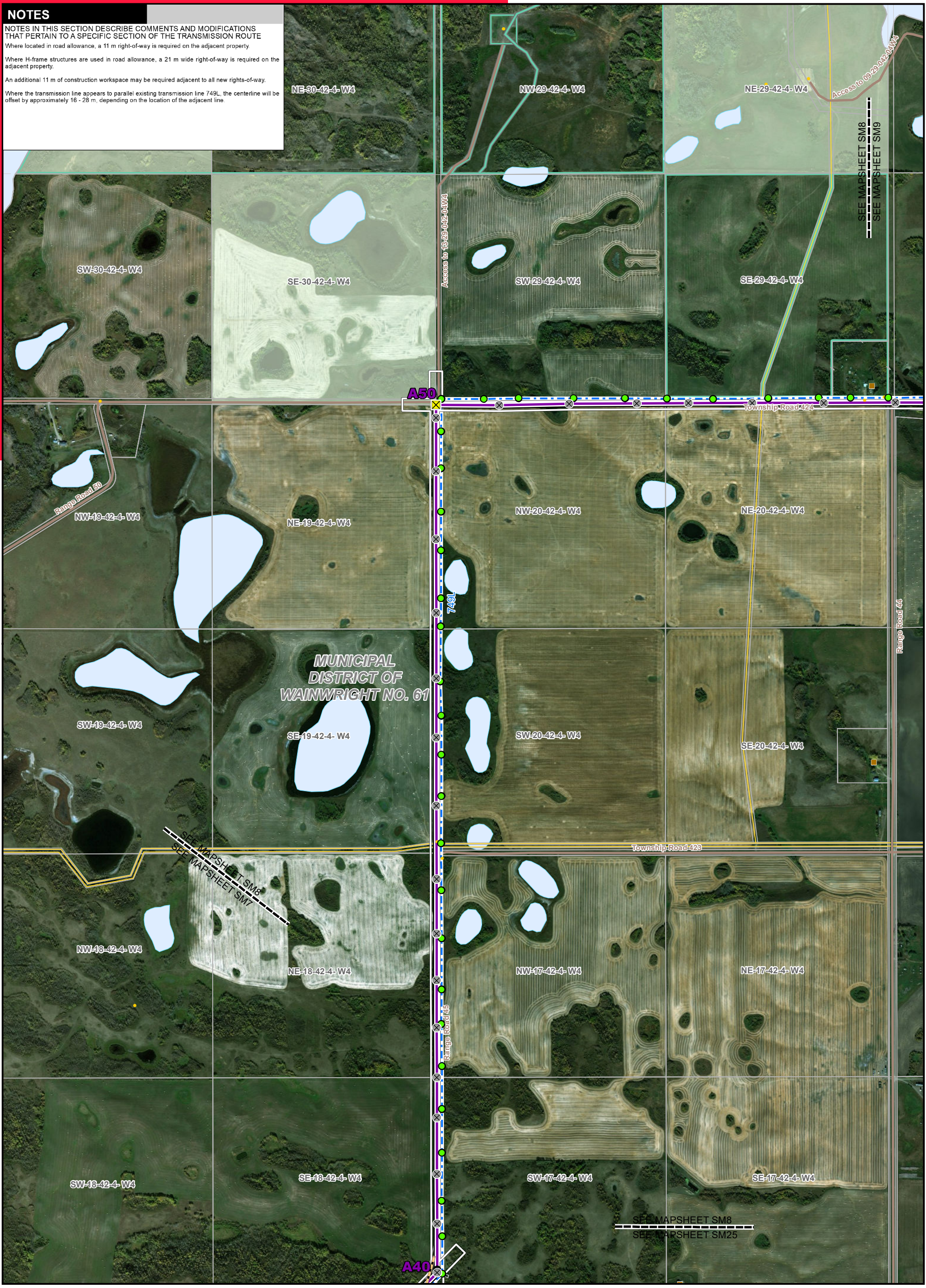
NOTES IN THIS SECTION DESCRIBE COMMENTS AND MODIFICATIONS THAT PERTAIN TO A SPECIFIC SECTION OF THE TRANSMISSION ROUTE

Where located in road allowance, a 11 m right-of-way is required on the adjacent property.

Where H-frame structures are used in road allowance, a 21 m wide right-of-way is required on the adjacent property.

An additional 11 m of construction workspace may be required adjacent to all new rights-of-way.

Where the transmission line appears to parallel existing transmission line 749L, the centerline will be offset by approximately 16 - 28 m, depending on the location of the adjacent line.



LEGEND

● Point Designation	— Preferred 240 kV Transmission Line Alignment - Stage 2	— Right-of-Way Boundary	— Pipeline
⊗ Monopole Structure	— Alternate 240 kV Transmission Line Alignment - Stage 1	— Potential Construction Workspace	— Road
⊗ 2-pole Structure	— Alternate 240 kV Transmission Line Alignment - Stage 2	— Fenceline	— Railway
⊗ 3-pole Structure	— Potential Route Variant	— Potential Substation Upgrade	— Crown Land
⊗ H-frame Structure	— Potential Realignment of Existing Transmission Line	● Hamlet or Locality	— Environmentally Significant Area
● Existing Transmission Structure	— Buried Fibre Optic Cable	● Residence	— Military Base
● Existing Substation	— Potential Access Trail	● Wellsite	— Other Protected Area
— Preferred 240 kV Transmission Line Alignment - Stage 1	— Existing Transmission Line	— Municipal or County Boundary	— Urban Area
			— Water Body

NO.: XXXXXXXXXX
 DRAWN: SG - JACOBS
 FILE NO.: XXXXXXXX
 REVISION: 0.00.00
 AL FOLDER: PENV
DATE: 2020-03-25

0 0.2 0.4 0.6 Kilometres
 0 0.1 0.2 0.3 Miles

Photography dated: 2012 Source: Esri Basemap Imagery
 Although there is no reason to believe that there are any errors associated with the data used to generate this product or in the product itself, users of these data are advised that errors in the data may be present.

STRIP MOSAIC SM8

ALTALINK
 A BERKSHIRE HATHAWAY ENERGY COMPANY

POTENTIAL
 Provost to Edgerton and Niirem to Vermilion Transmission Development
 Provost to Edgerton Component



MUNICIPAL DISTRICT OF WAINWRIGHT NO. 61

NOTES

NOTES IN THIS SECTION DESCRIBE COMMENTS AND MODIFICATIONS THAT PERTAIN TO A SPECIFIC SECTION OF THE TRANSMISSION ROUTE

Where located in road allowance, a 11 m right-of-way is required on the adjacent property.

Where H-frame structures are used in road allowance, a 21 m wide right-of-way is required on the adjacent property.

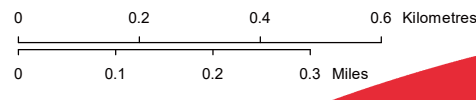
An additional 11 m of construction workspace may be required adjacent to all new rights-of-way.

Where the transmission line appears to parallel existing transmission line 749L, the centerline will be offset by approximately 16 - 28 m, depending on the location of the adjacent line.

LEGEND

● Point Designation	Preferred 240 kV Transmission Line Alignment - Stage 2	— Right-of-Way Boundary	— Pipeline
⊗ Monopole Structure	Alternate 240 kV Transmission Line Alignment - Stage 1	— Potential Construction Workspace	— Road
⊗ 2-pole Structure	Alternate 240 kV Transmission Line Alignment - Stage 2	— Fenceline	— Railway
⊗ 3-pole Structure	Potential Route Variant	— Potential Substation Upgrade	— Crown Land
⊗ H-frame Structure	Potential Realignment of Existing Transmission Line	● Hamlet or Locality	— Environmentally Significant Area
● Existing Transmission Structure	Buried Fibre Optic Cable	● Residence	— Other Protected Area
● Existing Substation	Potential Access Trail	● Wellsite	— Military Base
— Preferred 240 kV Transmission Line Alignment - Stage 1	— Existing Transmission Line	— Municipal or County Boundary	— Urban Area
			— Water Body

NO.: XXXXXXXXXX
 DRAWN: SG - JACOBS
 FILE NO.: XXXXXXXX
 REVISION: 0.00.00
 AL FOLDER: PENV
DATE: 2020-03-25

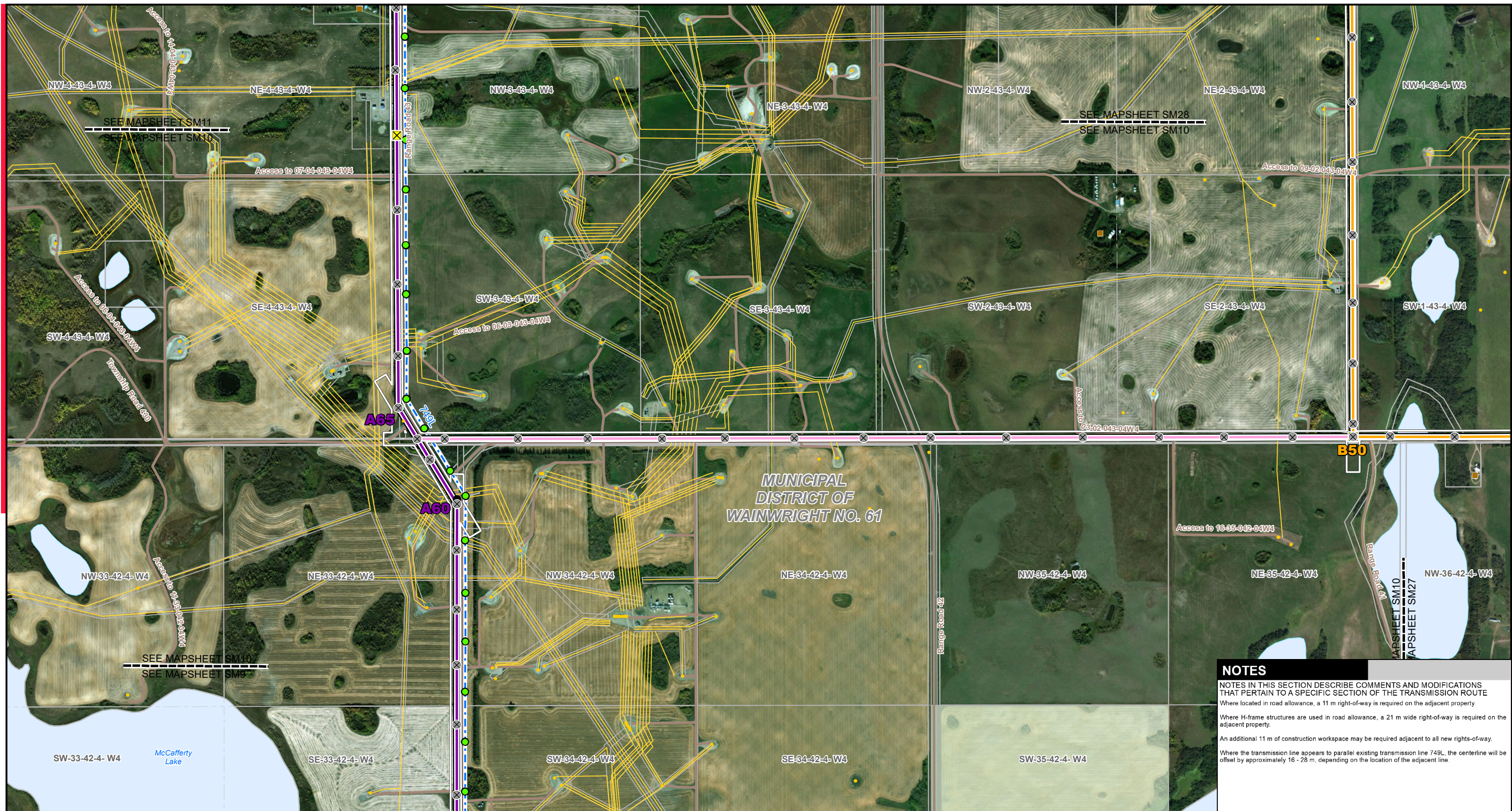


Photography dated: 2012 Source: Esri Basemap Imagery
 Although there is no reason to believe that there are any errors associated with the data used to generate this product or in the product itself, users of these data are advised that errors in the data may be present.

STRIP MOSAIC SM9



POTENTIAL
 Provost to Edgerton and Niirem to Vermilion Transmission Development
 Provost to Edgerton Component



NOTES

NOTES IN THIS SECTION DESCRIBE COMMENTS AND MODIFICATIONS THAT PERTAIN TO A SPECIFIC SECTION OF THE TRANSMISSION ROUTE

Where located in road allowance, a 11 m right-of-way is required on the adjacent property

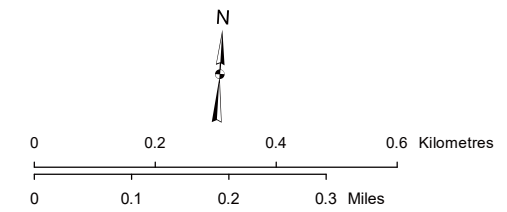
Where H-frame structures are used in road allowance, a 21 m wide right-of-way is required on the adjacent property.

An additional 11 m of construction workspace may be required adjacent to all new rights-of-way.

Where the transmission line appears to parallel existing transmission line 749L, the centerline will be offset by approximately 16 - 28 m, depending on the location of the adjacent line.

LEGEND			
● Point Designation	Alternate 240 kV Transmission Line Alignment - Stage 1	Potential Construction Workspace	Municipal or County Boundary
⊗ Monopole Structure	Alternate 240 kV Transmission Line Alignment - Stage 2	Potential Substation Upgrade	Environmentally Significant Area
⊗ 2-pole Structure	Potential Route Variant	Fenceline	Military Base
⊗ 3-pole Structure	Potential Realignment of Existing Transmission Line	Hamlet or Locality	Other Protected Area
⊗ H-frame Structure	Buried Fibre Optic Cable	Residence	Crown Land
● Existing Transmission Structure	Potential Access Trail	Wellsite	Urban Area
■ Existing Substation	Existing Transmission Line	Pipeline	Water Body
— Preferred 240 kV Transmission Line Alignment - Stage 1	Right-of-Way Boundary	→ Railway	
— Preferred 240 kV Transmission Line Alignment - Stage 2		— Road	

NO: XXXXXXXXXXXX
 DRAWN: SG - JACOBS
 FILE NO.: XXXXXXXX
 REVISION: 0.00.00
 AL FOLDER: PENV
DATE: 2020-03-25



Photography dated: 2012 Source: Esri Basemap Imagery
 Although there is no reason to believe that there are any errors associated with the data used to generate this product or in the product itself, users of these data are advised that errors in the data may be present.

STRIP MOSAIC SM10



POTENTIAL
 Provost to Edgerton and Nilrem to Vermilion
 Transmission Development
 Provost to Edgerton Component

NOTES

NOTES IN THIS SECTION DESCRIBE COMMENTS AND MODIFICATIONS THAT PERTAIN TO A SPECIFIC SECTION OF THE TRANSMISSION ROUTE
 Where located in road allowance, a 11 m right-of-way is required on the adjacent property.
 Where H-frame structures are used in road allowance, a 21 m wide right-of-way is required on the adjacent property.
 An additional 11 m of construction workspace may be required adjacent to all new rights-of-way.
 Where the transmission line appears to parallel existing transmission line 749L, the centerline will be offset by approximately 16 - 28 m, depending on the location of the adjacent line.



LEGEND

- | | | | |
|--|--|------------------------------------|------------------------------------|
| ● Point Designation | Preferred 240 kV Transmission Line Alignment - Stage 2 | — Right-of-Way Boundary | — Pipeline |
| ⊗ Monopole Structure | Alternate 240 kV Transmission Line Alignment - Stage 1 | — Potential Construction Workspace | — Road |
| ⊗ 2-pole Structure | Alternate 240 kV Transmission Line Alignment - Stage 2 | — Fenceline | — Railway |
| ⊗ 3-pole Structure | Potential Route Variant | — Potential Substation Upgrade | — Crown Land |
| ⊗ H-frame Structure | Potential Realignment of Existing Transmission Line | ● Hamlet or Locality | — Environmentally Significant Area |
| ● Existing Transmission Structure | Buried Fibre Optic Cable | ● Residence | — Military Base |
| ● Existing Substation | Potential Access Trail | ● Wellsite | — Other Protected Area |
| — Preferred 240 kV Transmission Line Alignment - Stage 1 | — Existing Transmission Line | — Municipal or County Boundary | — Urban Area |
| | | | — Water Body |

NO.: XXXXXXXXXX
 DRAWN: SG - JACOBS
 FILE NO.: XXXXXXXX
 REVISION: 0.00.00
 AL FOLDER: PENV
DATE: 2020-03-25

0 0.2 0.4 0.6 Kilometres
 0 0.1 0.2 0.3 Miles

Photography dated: 2012 Source: Esri Basemap Imagery
 Although there is no reason to believe that there are any errors associated with the data used to generate this product or in the product itself, users of these data are advised that errors in the data may be present.

STRIP MOSAIC SM11



POTENTIAL
 Provost to Edgerton and Niirem to Vermilion Transmission Development
 Provost to Edgerton Component

NOTES

NOTES IN THIS SECTION DESCRIBE COMMENTS AND MODIFICATIONS THAT PERTAIN TO A SPECIFIC SECTION OF THE TRANSMISSION ROUTE

Where located in road allowance, a 11 m right-of-way is required on the adjacent property

Where located on property, a 23 m wide right-of-way is required. Where the transmission line route appears to be on quarter line, the intent is that the structures will straddle the quarter line.

Where H-frame structures are used on property, a 36 m wide right-of-way is required. Where H-frame structures are used in road allowance, a 21 m wide right-of-way is required on the adjacent property.

An additional 11 m of construction workspace may be required adjacent to all new rights-of-way.

Where the transmission line appears to parallel existing transmission line 749L, the centerline will be offset by approximately 16 - 28 m, depending on the location of the adjacent line.



LEGEND

● Point Designation	— Preferred 240 kV Transmission Line Alignment - Stage 2	— Right-of-Way Boundary	— Pipeline
⊗ Monopole Structure	— Alternate 240 kV Transmission Line Alignment - Stage 1	— Potential Construction Workspace	— Road
⊗ 2-pole Structure	— Alternate 240 kV Transmission Line Alignment - Stage 2	— Fenceline	— Railway
⊗ 3-pole Structure	— Potential Route Variant	— Potential Substation Upgrade	— Crown Land
⊗ H-frame Structure	— Potential Realignment of Existing Transmission Line	● Hamlet or Locality	— Environmentally Significant Area
● Existing Transmission Structure	— Buried Fibre Optic Cable	● Residence	— Military Base
● Existing Substation	— Potential Access Trail	● Wellsite	— Other Protected Area
— Preferred 240 kV Transmission Line Alignment - Stage 1	— Existing Transmission Line	— Municipal or County Boundary	— Urban Area
			— Water Body

NO.: XXXXXXXXXX
 DRAWN: SG - JACOBS
 FILE NO.: XXXXXXXX
 REVISION: 0.00.00
 AL FOLDER: PENV
DATE: 2020-03-25

Photography dated: 2012 Source: Esri Basemap Imagery
 Although there is no reason to believe that there are any errors associated with the data used to generate this product or in the product itself, users of these data are advised that errors in the data may be present.

0 0.2 0.4 0.6 Kilometres
 0 0.1 0.2 0.3 Miles

STRIP MOSAIC SM12

ALTALINK
 A BERKSHIRE HATHAWAY ENERGY COMPANY

POTENTIAL
 Provost to Edgerton and Niirem to Vermilion Transmission Development
 Provost to Edgerton Component

NOTES

NOTES IN THIS SECTION DESCRIBE COMMENTS AND MODIFICATIONS THAT PERTAIN TO A SPECIFIC SECTION OF THE TRANSMISSION ROUTE

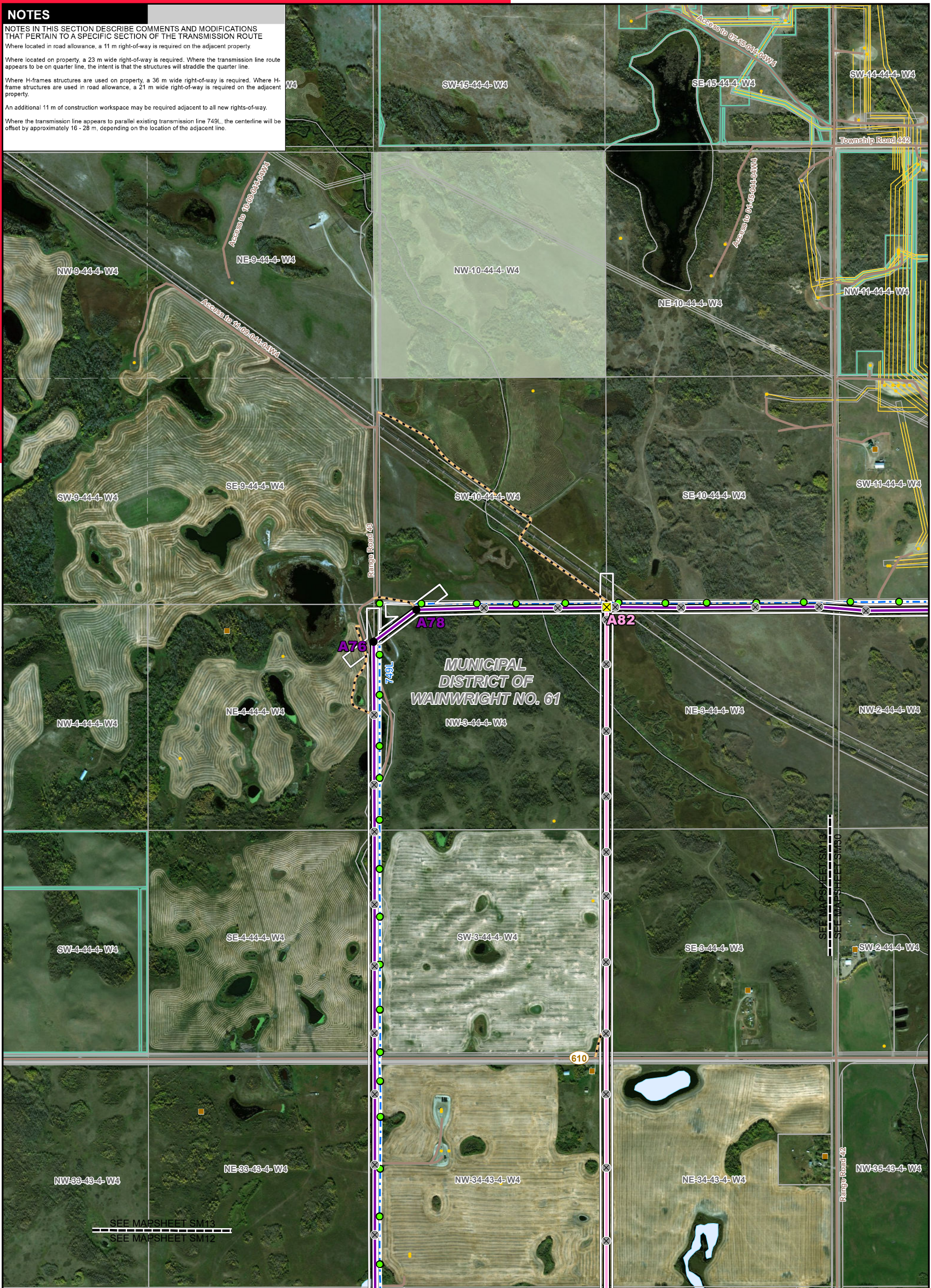
Where located in road allowance, a 11 m right-of-way is required on the adjacent property

Where located on property, a 23 m wide right-of-way is required. Where the transmission line route appears to be on quarter line, the intent is that the structures will straddle the quarter line.

Where H-frame structures are used on property, a 36 m wide right-of-way is required. Where H-frame structures are used in road allowance, a 21 m wide right-of-way is required on the adjacent property.

An additional 11 m of construction workspace may be required adjacent to all new rights-of-way.

Where the transmission line appears to parallel existing transmission line 749L, the centerline will be offset by approximately 16 - 28 m, depending on the location of the adjacent line.



LEGEND

● Point Designation	— Preferred 240 kV Transmission Line Alignment - Stage 2	— Right-of-Way Boundary	— Pipeline
⊗ Monopole Structure	— Alternate 240 kV Transmission Line Alignment - Stage 1	— Potential Construction Workspace	— Road
⊗ 2-pole Structure	— Alternate 240 kV Transmission Line Alignment - Stage 2	— Fenceline	— Railway
⊗ 3-pole Structure	— Potential Route Variant	— Potential Substation Upgrade	— Crown Land
⊗ H-frame Structure	— Potential Realignment of Existing Transmission Line	● Hamlet or Locality	— Environmentally Significant Area
● Existing Transmission Structure	— Buried Fibre Optic Cable	● Residence	— Military Base
● Existing Substation	— Potential Access Trail	● Wellsite	— Other Protected Area
— Preferred 240 kV Transmission Line Alignment - Stage 1	— Existing Transmission Line	— Municipal or County Boundary	— Urban Area
			— Water Body

NO.: XXXXXXXXXX
 DRAWN: SG - JACOBS
 FILE NO.: XXXXXXXX
 REVISION: 0.00.00
 AL FOLDER: PENV
DATE: 2020-03-25

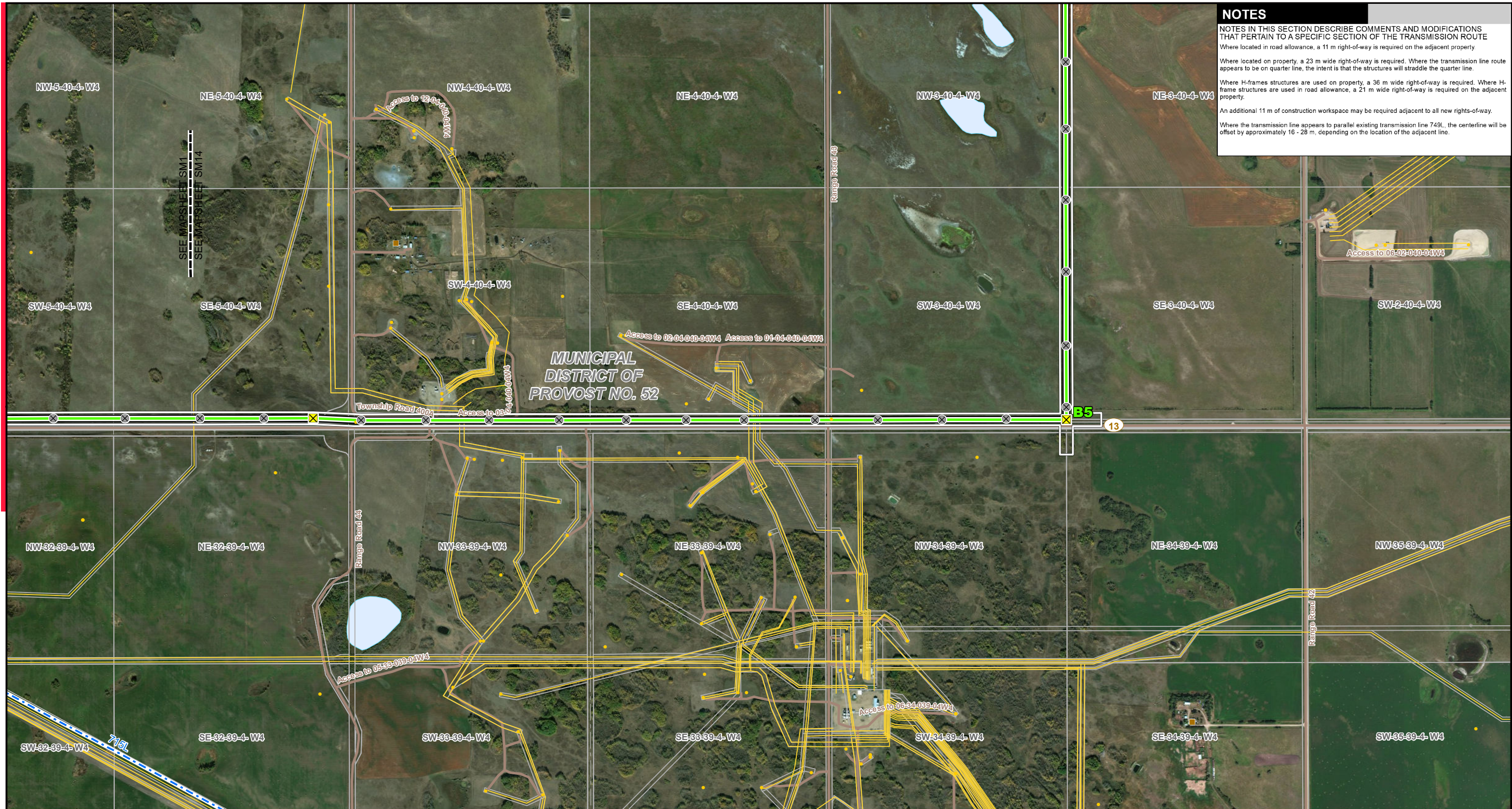
Photography dated: 2012 Source: Esri Basemap Imagery
 Although there is no reason to believe that there are any errors associated with the data used to generate this product or in the product itself, users of these data are advised that errors in the data may be present.

0 0.2 0.4 0.6 Kilometres
 0 0.1 0.2 0.3 Miles

STRIP MOSAIC SM13

ALTALINK
 A BERKSHIRE HATHAWAY ENERGY COMPANY

POTENTIAL
 Provost to Edgerton and Niirem to Vermilion Transmission Development
 Provost to Edgerton Component



NOTES

NOTES IN THIS SECTION DESCRIBE COMMENTS AND MODIFICATIONS THAT PERTAIN TO A SPECIFIC SECTION OF THE TRANSMISSION ROUTE

Where located in road allowance, a 11 m right-of-way is required on the adjacent property

Where located on property, a 23 m wide right-of-way is required. Where the transmission line route appears to be on quarter line, the intent is that the structures will straddle the quarter line.

Where H-frame structures are used on property, a 36 m wide right-of-way is required. Where H-frame structures are used in road allowance, a 21 m wide right-of-way is required on the adjacent property.

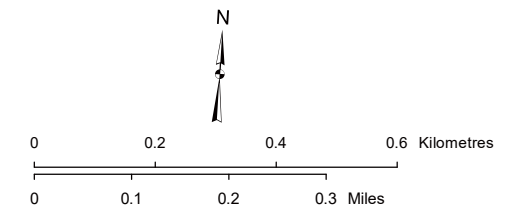
An additional 11 m of construction workspace may be required adjacent to all new rights-of-way.

Where the transmission line appears to parallel existing transmission line 749L, the centerline will be offset by approximately 16 - 28 m, depending on the location of the adjacent line.

LEGEND

● Point Designation	— Alternate 240 kV Transmission Line Alignment - Stage 1	□ Potential Construction Workspace	— Municipal or County Boundary
⊗ Monopole Structure	— Alternate 240 kV Transmission Line Alignment - Stage 2	□ Potential Substation Upgrade	□ Environmentally Significant Area
⊗ 2-pole Structure	— Potential Route Variant	□ Fenceline	□ Military Base
⊗ 3-pole Structure	— Potential Realignment of Existing Transmission Line	● Hamlet or Locality	□ Other Protected Area
⊗ H-frame Structure	— Buried Fibre Optic Cable	● Residence	□ Crown Land
● Existing Transmission Structure	— Potential Access Trail	● Wellsite	□ Urban Area
■ Existing Substation	— Existing Transmission Line	— Pipeline	□ Water Body
— Preferred 240 kV Transmission Line Alignment - Stage 1	— Right-of-Way Boundary	— Railway	
— Preferred 240 kV Transmission Line Alignment - Stage 2	— Road		

NO: XXXXXXXXXXXX
 DRAWN: SG - JACOBS
 FILE NO.: XXXXXXXX
 REVISION: 0.00.00
 AL FOLDER: PENV
DATE: 2020-03-25



STRIP MOSAIC SM14



POTENTIAL
 Provost to Edgerton and Nilrem to Vermilion
 Transmission Development
 Provost to Edgerton Component

Photography dated: 2012 Source: Esri Basemap Imagery
 Although there is no reason to believe that there are any errors associated with the data used to generate this product or in the product itself, users of these data are advised that errors in the data may be present.



SEE MAPSHEET SM17
SEE MAPSHEET SM15

MUNICIPAL DISTRICT OF PROVOST NO. 52

SEE MAPSHEET SM15
SEE MAPSHEET SM14

NOTES

NOTES IN THIS SECTION DESCRIBE COMMENTS AND MODIFICATIONS THAT PERTAIN TO A SPECIFIC SECTION OF THE TRANSMISSION ROUTE

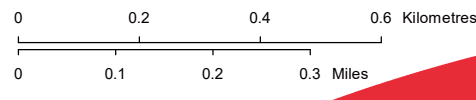
Where located on property, a 23 m wide right-of-way is required. Where the transmission line route appears to be on quarter line, the intent is that the structures will straddle the quarter line.

Where H-frame structures are used on property, a 36 m wide right-of-way is required.

An additional 11 m of construction workspace may be required adjacent to all new rights-of-way.

LEGEND	
● Point Designation	Preferred 240 kV Transmission Line Alignment - Stage 2
⊗ Monopole Structure	Alternate 240 kV Transmission Line Alignment - Stage 1
⊗ 2-pole Structure	Alternate 240 kV Transmission Line Alignment - Stage 2
⊗ 3-pole Structure	Potential Route Variant
⊗ H-frame Structure	Potential Realignment of Existing Transmission Line
● Existing Transmission Structure	Buried Fibre Optic Cable
● Existing Substation	Potential Access Trail
● Preferred 240 kV Transmission Line Alignment - Stage 1	Right-of-Way Boundary
— Pipeline	Potential Construction Workspace
— Road	Fenceline
— Railway	Potential Substation Upgrade
— Crown Land	● Hamlet or Locality
— Environmentally Significant Area	● Residence
— Military Base	● Wellsite
— Other Protected Area	— Municipal or County Boundary
— Urban Area	
— Water Body	

NO.: XXXXXXXXXX
DRAWN: SG - JACOBS
FILE NO.: XXXXXXXX
REVISION: 0.00.00
AL FOLDER: PENV
DATE: 2020-03-25



Photography dated: 2012 Source: Esri Basemap Imagery
Although there is no reason to believe that there are any errors associated with the data used to generate this product or in the product itself, users of these data are advised that errors in the data may be present.

STRIP MOSAIC **SM15**



POTENTIAL
Provost to Edgerton and Niirem to Vermilion Transmission Development
Provost to Edgerton Component

NOTES

NOTES IN THIS SECTION DESCRIBE COMMENTS AND MODIFICATIONS THAT PERTAIN TO A SPECIFIC SECTION OF THE TRANSMISSION ROUTE

Where located on property, a 23 m wide right-of-way is required. Where the transmission line route appears to be on quarter line, the intent is that the structures will straddle the quarter line.

Where H-frame structures are used on property, a 36 m wide right-of-way is required.

An additional 11 m of construction workspace may be required adjacent to all new rights-of-way.



LEGEND

● Point Designation	Preferred 240 kV Transmission Line Alignment - Stage 2	Right-of-Way Boundary	Pipeline
⊗ Monopole Structure	Alternate 240 kV Transmission Line Alignment - Stage 1	Potential Construction Workspace	Road
⊗ 2-pole Structure	Alternate 240 kV Transmission Line Alignment - Stage 2	Fenceline	Railway
⊗ 3-pole Structure	Potential Route Variant	Potential Substation Upgrade	Crown Land
⊗ H-frame Structure	Potential Realignment of Existing Transmission Line	Hamlet or Locality	Environmentally Significant Area
● Existing Transmission Structure	Buried Fibre Optic Cable	Residence	Military Base
● Existing Substation	Potential Access Trail	Wellsite	Other Protected Area
● Preferred 240 kV Transmission Line Alignment - Stage 1	Existing Transmission Line	Municipal or County Boundary	Urban Area
			Water Body

NO.: XXXXXXXXXX
 DRAWN: SG - JACOBS
 FILE NO.: XXXXXXXX
 REVISION: 0.00.00
 AL FOLDER: PENV
DATE: 2020-03-25

Photography dated: 2012 Source: Esri Basemap Imagery
 Although there is no reason to believe that there are any errors associated with the data used to generate this product or in the product itself, users of these data are advised that errors in the data may be present.

0 0.2 0.4 0.6 Kilometres
 0 0.1 0.2 0.3 Miles

STRIP MOSAIC SM17

ALTALINK
 A BERKSHIRE HATHAWAY ENERGY COMPANY

POTENTIAL
 Provost to Edgerton and Niirem to Vermilion Transmission Development
 Provost to Edgerton Component



MUNICIPAL DISTRICT
OF PROVOST NO. 52

NOTES

NOTES IN THIS SECTION DESCRIBE COMMENTS AND MODIFICATIONS THAT PERTAIN TO A SPECIFIC SECTION OF THE TRANSMISSION ROUTE

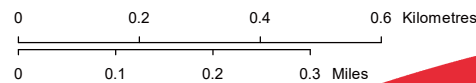
Where located on property, a 23 m wide right-of-way is required. Where the transmission line route appears to be on quarter line, the intent is that the structures will straddle the quarter line.

Where H-frames structures are used on property, a 36 m wide right-of-way is required.

An additional 11 m of construction workspace may be required adjacent to all new rights-of-way.

LEGEND	
● Point Designation	Preferred 240 kV Transmission Line Alignment - Stage 2
⊗ Monopole Structure	Alternate 240 kV Transmission Line Alignment - Stage 1
⊗ 2-pole Structure	Alternate 240 kV Transmission Line Alignment - Stage 2
⊗ 3-pole Structure	Potential Route Variant
⊗ H-frame Structure	Potential Realignment of Existing Transmission Line
● Existing Transmission Structure	Buried Fibre Optic Cable
● Existing Substation	Potential Access Trail
● Preferred 240 kV Transmission Line Alignment - Stage 1	Right-of-Way Boundary
— Pipeline	Potential Construction Workspace
— Road	Fenceline
— Railway	Potential Substation Upgrade
— Crown Land	● Hamlet or Locality
— Environmentally Significant Area	● Residence
— Military Base	● Wellsite
— Other Protected Area	— Municipal or County Boundary
— Urban Area	— Water Body

NO.: XXXXXXXXXX
DRAWN: SG - JACOBS
FILE NO.: XXXXXXXX
REVISION: 0.00.00
AL FOLDER: PENV
DATE: 2020-03-25

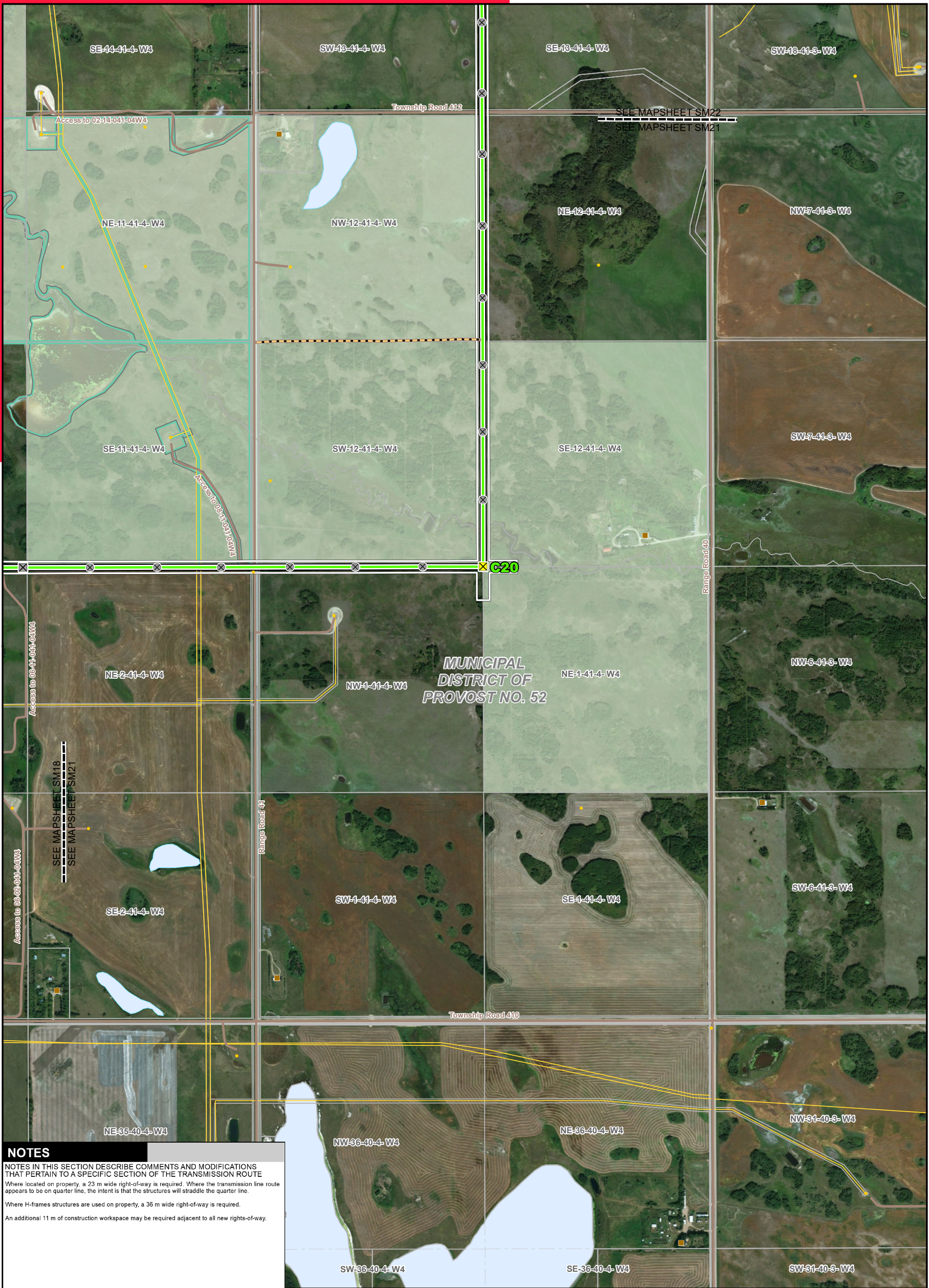


Photography dated: 2012 Source: Esri Basemap Imagery
Although there is no reason to believe that there are any errors associated with the data used to generate this product or in the product itself, users of these data are advised that errors in the data may be present.

STRIP MOSAIC **SM18**



POTENTIAL
Provost to Edgerton and Niirem to Vermilion
Transmission Development
Provost to Edgerton Component



NOTES

NOTES IN THIS SECTION DESCRIBE COMMENTS AND MODIFICATIONS THAT PERTAIN TO A SPECIFIC SECTION OF THE TRANSMISSION ROUTE

Where located on property, a 23 m wide right-of-way is required. Where the transmission line route appears to be on quarter line, the intent is that the structures will straddle the quarter line.

Where H-frame structures are used on property, a 36 m wide right-of-way is required.

An additional 11 m of construction workspace may be required adjacent to all new rights-of-way.

LEGEND	
● Point Designation	Preferred 240 kV Transmission Line Alignment - Stage 2
⊗ Monopole Structure	Alternate 240 kV Transmission Line Alignment - Stage 1
⊗ 2-pole Structure	Alternate 240 kV Transmission Line Alignment - Stage 2
⊗ 3-pole Structure	Potential Route Variant
⊗ H-frame Structure	Potential Realignment of Existing Transmission Line
● Existing Transmission Structure	Buried Fibre Optic Cable
● Existing Substation	Potential Access Trail
● Preferred 240 kV Transmission Line Alignment - Stage 1	Existing Transmission Line
— Right-of-Way Boundary	Pipeline
— Potential Construction Workspace	Road
— Fenceline	Railway
— Potential Substation Upgrade	Crown Land
● Hamlet or Locality	Environmentally Significant Area
● Residence	Military Base
● Wellsite	Other Protected Area
— Municipal or County Boundary	Urban Area
	Water Body

NO.: XXXXXXXXXX
 DRAWN: SG - JACOBS
 FILE NO.: XXXXXXXX
 REVISION: 0.00.00
 AL FOLDER: PENV
DATE: 2020-03-25

Photography dated: 2012 Source: Esri Basemap Imagery
 Although there is no reason to believe that there are any errors associated with the data used to generate this product or in the product itself, users of these data are advised that errors in the data may be present.

0 0.2 0.4 0.6 Kilometres
 0 0.1 0.2 0.3 Miles

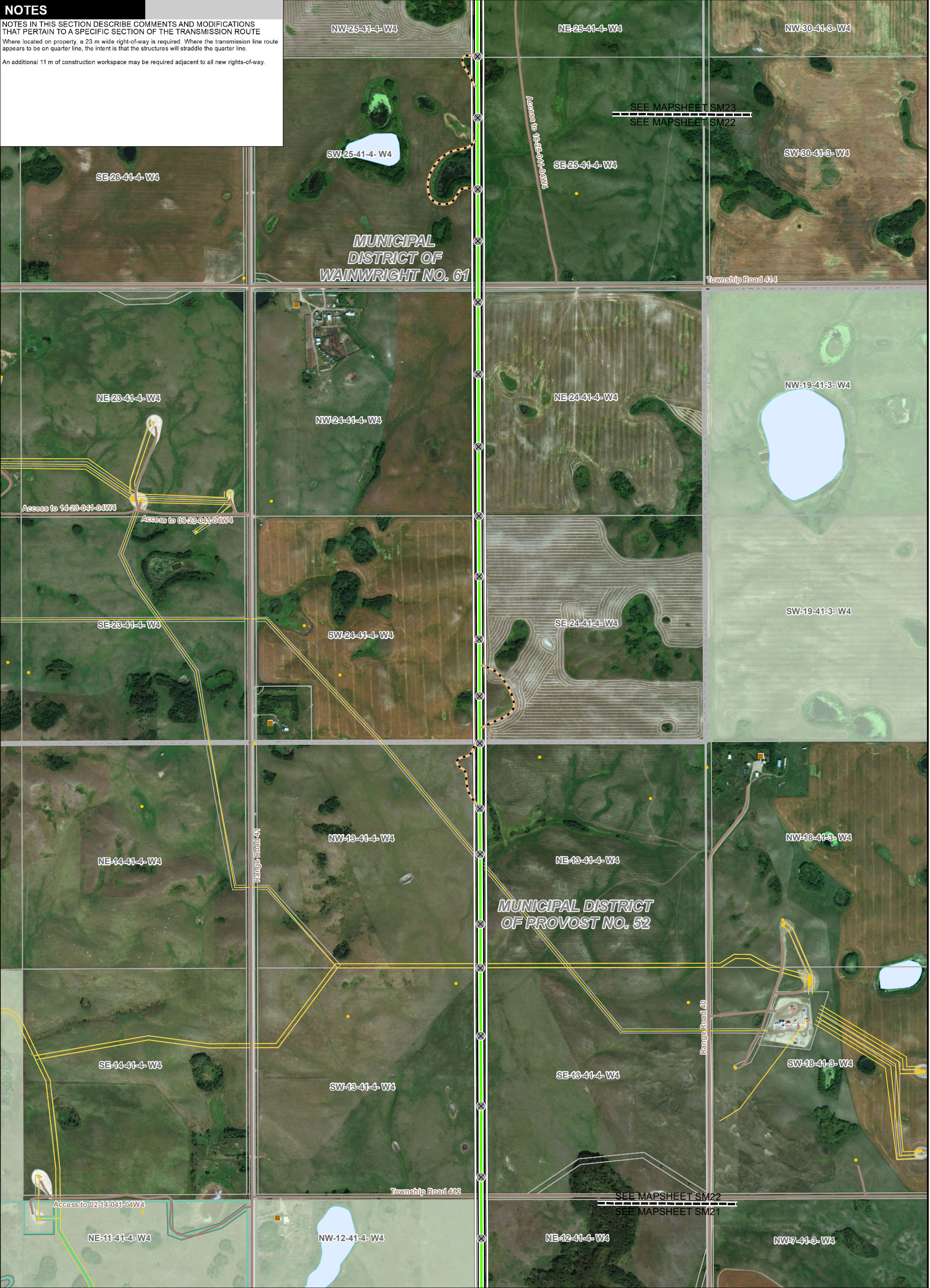
STRIP MOSAIC SM21

ALTALINK
 A BERKSHIRE HATHAWAY ENERGY COMPANY

POTENTIAL
 Provost to Edgerton and Niirem to Vermilion Transmission Development
 Provost to Edgerton Component

NOTES

NOTES IN THIS SECTION DESCRIBE COMMENTS AND MODIFICATIONS THAT PERTAIN TO A SPECIFIC SECTION OF THE TRANSMISSION ROUTE
 Where located on property, a 23 m wide right-of-way is required. Where the transmission line route appears to be on quarter line, the intent is that the structures will straddle the quarter line.
 An additional 11 m of construction workspace may be required adjacent to all new rights-of-way.



LEGEND

● Point Designation	Preferred 240 kV Transmission Line Alignment - Stage 2	Right-of-Way Boundary	Pipeline
⊗ Monopole Structure	Alternate 240 kV Transmission Line Alignment - Stage 1	Potential Construction Workspace	Road
⊗ 2-pole Structure	Alternate 240 kV Transmission Line Alignment - Stage 2	Fenceline	Railway
⊗ 3-pole Structure	Potential Route Variant	Potential Substation Upgrade	Crown Land
⊗ H-frame Structure	Potential Realignment of Existing Transmission Line	Hamlet or Locality	Environmentally Significant Area
● Existing Transmission Structure	Buried Fibre Optic Cable	Residence	Military Base
● Existing Substation	Potential Access Trail	Wellsite	Other Protected Area
— Preferred 240 kV Transmission Line Alignment - Stage 1	Existing Transmission Line	Municipal or County Boundary	Urban Area
			Water Body

NO.: XXXXXXXXXX
 DRAWN: SG - JACOBS
 FILE NO.: XXXXXXXX
 REVISION: 0.00.00
 AL FOLDER: PENV
DATE: 2020-03-25

Photography dated: 2012 Source: Esri Basemap Imagery
 Although there is no reason to believe that there are any errors associated with the data used to generate this product or in the product itself, users of these data are advised that errors in the data may be present.

0 0.2 0.4 0.6 Kilometres
 0 0.1 0.2 0.3 Miles

STRIP MOSAIC SM22

ALTALINK
 A BERKSHIRE HATHAWAY ENERGY COMPANY

POTENTIAL
 Provost to Edgerton and Niirem to Vermilion Transmission Development
 Provost to Edgerton Component



NOTES

NOTES IN THIS SECTION DESCRIBE COMMENTS AND MODIFICATIONS THAT PERTAIN TO A SPECIFIC SECTION OF THE TRANSMISSION ROUTE

Where located on property, a 23 m wide right-of-way is required. Where the transmission line route appears to be on quarter line, the intent is that the structures will straddle the quarter line.

Where H-frames structures are used on property, a 36 m wide right-of-way is required.

An additional 11 m of construction workspace may be required adjacent to all new rights-of-way.

LEGEND	
● Point Designation	Preferred 240 kV Transmission Line Alignment - Stage 2
⊗ Monopole Structure	Alternate 240 kV Transmission Line Alignment - Stage 1
⊗ 2-pole Structure	Alternate 240 kV Transmission Line Alignment - Stage 2
⊗ 3-pole Structure	Potential Route Variant
⊗ H-frame Structure	Potential Realignment of Existing Transmission Line
● Existing Transmission Structure	Buried Fibre Optic Cable
● Existing Substation	Potential Access Trail
● Preferred 240 kV Transmission Line Alignment - Stage 1	Right-of-Way Boundary
— Pipeline	Potential Construction Workspace
— Road	Fenceline
— Railway	Potential Substation Upgrade
— Crown Land	● Hamlet or Locality
— Environmentally Significant Area	● Residence
— Military Base	● Wellsite
— Other Protected Area	— Municipal or County Boundary
— Urban Area	— Water Body

NO.: XXXXXXXXXX
 DRAWN: SG - JACOBS
 FILE NO.: XXXXXXXX
 REVISION: 0.00.00
 AL FOLDER: PENV
DATE: 2020-03-25

Photography dated: 2012 Source: Esri Basemap Imagery
 Although there is no reason to believe that there are any errors associated with the data used to generate this product or in the product itself, users of these data are advised that errors in the data may be present.

0 0.2 0.4 0.6 Kilometres
 0 0.1 0.2 0.3 Miles

STRIP MOSAIC SM23

ALTALINK
 A BERKSHIRE HATHAWAY ENERGY COMPANY

POTENTIAL
 Provost to Edgerton and Niirem to Vermilion Transmission Development
 Provost to Edgerton Component



NOTES

NOTES IN THIS SECTION DESCRIBE COMMENTS AND MODIFICATIONS THAT PERTAIN TO A SPECIFIC SECTION OF THE TRANSMISSION ROUTE

Where located in road allowance, a 11 m right-of-way is required on the adjacent property.

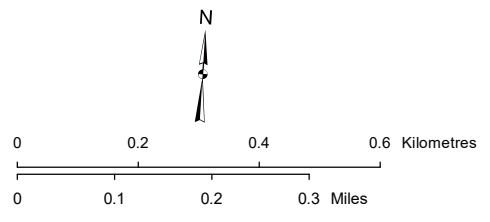
Where located on property, a 23 m wide right-of-way is required. Where the transmission line route appears to be on quarter line, the intent is that the structures will straddle the quarter line.

Where H-frame structures are used on property, a 36 m wide right-of-way is required. Where H-frame structures are used in road allowance, a 21 m wide right-of-way is required on the adjacent property.

An additional 11 m of construction workspace may be required adjacent to all new rights-of-way.

LEGEND	
● Point Designation	Alternate 240 kV Transmission Line Alignment - Stage 1
⊗ Monopole Structure	Alternate 240 kV Transmission Line Alignment - Stage 2
⊗ 2-pole Structure	Potential Route Variant
⊗ 3-pole Structure	Potential Realignment of Existing Transmission Line
⊗ H-frame Structure	Buried Fibre Optic Cable
● Existing Transmission Structure	Potential Access Trail
■ Existing Substation	Existing Transmission Line
— Preferred 240 kV Transmission Line Alignment - Stage 1	Right-of-Way Boundary
— Preferred 240 kV Transmission Line Alignment - Stage 2	Road
□ Potential Construction Workspace	Potential Substation Upgrade
□ Potential Substation Upgrade	Fenceline
□ Fenceline	Hamlet or Locality
● Residence	Wellsite
● Wellsite	Pipeline
— Pipeline	Railway
— Railway	Road
— Road	Municipal or County Boundary
— Municipal or County Boundary	Environmentally Significant Area
— Environmentally Significant Area	Military Base
— Military Base	Other Protected Area
— Other Protected Area	Crown Land
— Crown Land	Urban Area
— Urban Area	Water Body
— Water Body	

NO: XXXXXXXXXXXX
 DRAWN: SG - JACOBS
 FILE NO.: XXXXXXXX
 REVISION: 0.00.00
 AL FOLDER: PENV
DATE: 2020-03-25



Photography dated: 2012 Source: Esri Basemap Imagery
 Although there is no reason to believe that there are any errors associated with the data used to generate this product or in the product itself, users of these data are advised that errors in the data may be present.

STRIP MOSAIC SM24



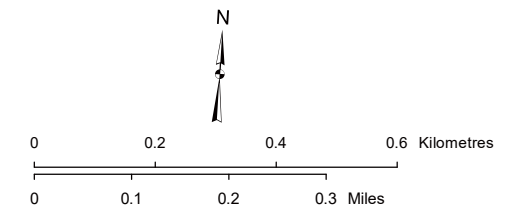
POTENTIAL
 Provost to Edgerton and Nilrem to Vermilion Transmission Development
 Provost to Edgerton Component



NOTES
 NOTES IN THIS SECTION DESCRIBE COMMENTS AND MODIFICATIONS THAT PERTAIN TO A SPECIFIC SECTION OF THE TRANSMISSION ROUTE
 Where located in road allowance, a 11 m right-of-way is required on the adjacent property
 Where located on property, a 23 m wide right-of-way is required. Where the transmission line route appears to be on quarter line, the intent is that the structures will straddle the quarter line.
 An additional 11 m of construction workspace may be required adjacent to all new rights-of-way.

LEGEND	
● Point Designation	Alternate 240 kV Transmission Line Alignment - Stage 1
⊗ Monopole Structure	Alternate 240 kV Transmission Line Alignment - Stage 2
⊠ 2-pole Structure	Potential Route Variant
⊡ 3-pole Structure	Potential Realignment of Existing Transmission Line
⊞ H-frame Structure	Buried Fibre Optic Cable
● Existing Transmission Structure	Potential Access Trail
■ Existing Substation	Existing Transmission Line
— Preferred 240 kV Transmission Line Alignment - Stage 1	Right-of-Way Boundary
— Preferred 240 kV Transmission Line Alignment - Stage 2	Road
□ Potential Construction Workspace	□ Potential Substation Upgrade
⊠ Fenceline	● Hamlet or Locality
● Residence	● Wellsite
● Pipeline	— Railway
— Municipal or County Boundary	□ Environmentally Significant Area
□ Military Base	□ Other Protected Area
□ Crown Land	□ Urban Area
□ Water Body	

NO: XXXXXXXXXX
 DRAWN: SG - JACOBS
 FILE NO.: XXXXXXXX
 REVISION: 0.00.00
 AL FOLDER: PENV
DATE: 2020-03-25



Photography dated: 2012 Source: Esri Basemap Imagery
 Although there is no reason to believe that there are any errors associated with the data used to generate this product or in the product itself, users of these data are advised that errors in the data may be present.

STRIP MOSAIC SM25



POTENTIAL
 Provost to Edgerton and Nilrem to Vermilion Transmission Development
 Provost to Edgerton Component

NOTES

NOTES IN THIS SECTION DESCRIBE COMMENTS AND MODIFICATIONS THAT PERTAIN TO A SPECIFIC SECTION OF THE TRANSMISSION ROUTE

Where located in road allowance, a 11 m right-of-way is required on the adjacent property.

Where H-frame structures are used in road allowance, a 21 m wide right-of-way is required on the adjacent property.

An additional 11 m of construction workspace may be required adjacent to all new rights-of-way.



LEGEND

● Point Designation	Preferred 240 kV Transmission Line Alignment - Stage 2	Right-of-Way Boundary	Pipeline
⊗ Monopole Structure	Alternate 240 kV Transmission Line Alignment - Stage 1	Potential Construction Workspace	Road
⊗ 2-pole Structure	Alternate 240 kV Transmission Line Alignment - Stage 2	Fenceline	Railway
⊗ 3-pole Structure	Potential Route Variant	Potential Substation Upgrade	Crown Land
⊗ H-frame Structure	Potential Realignment of Existing Transmission Line	Hamlet or Locality	Environmentally Significant Area
● Existing Transmission Structure	Buried Fibre Optic Cable	Residence	Other Protected Area
● Existing Substation	Potential Access Trail	Wellsite	Military Base
— Preferred 240 kV Transmission Line Alignment - Stage 1	Existing Transmission Line	Municipal or County Boundary	Urban Area
			Water Body

NO.: XXXXXXXXXX
 DRAWN: SG - JACOBS
 FILE NO.: XXXXXXXX
 REVISION: 0.00.00
 AL FOLDER: PENV
DATE: 2020-03-25

N

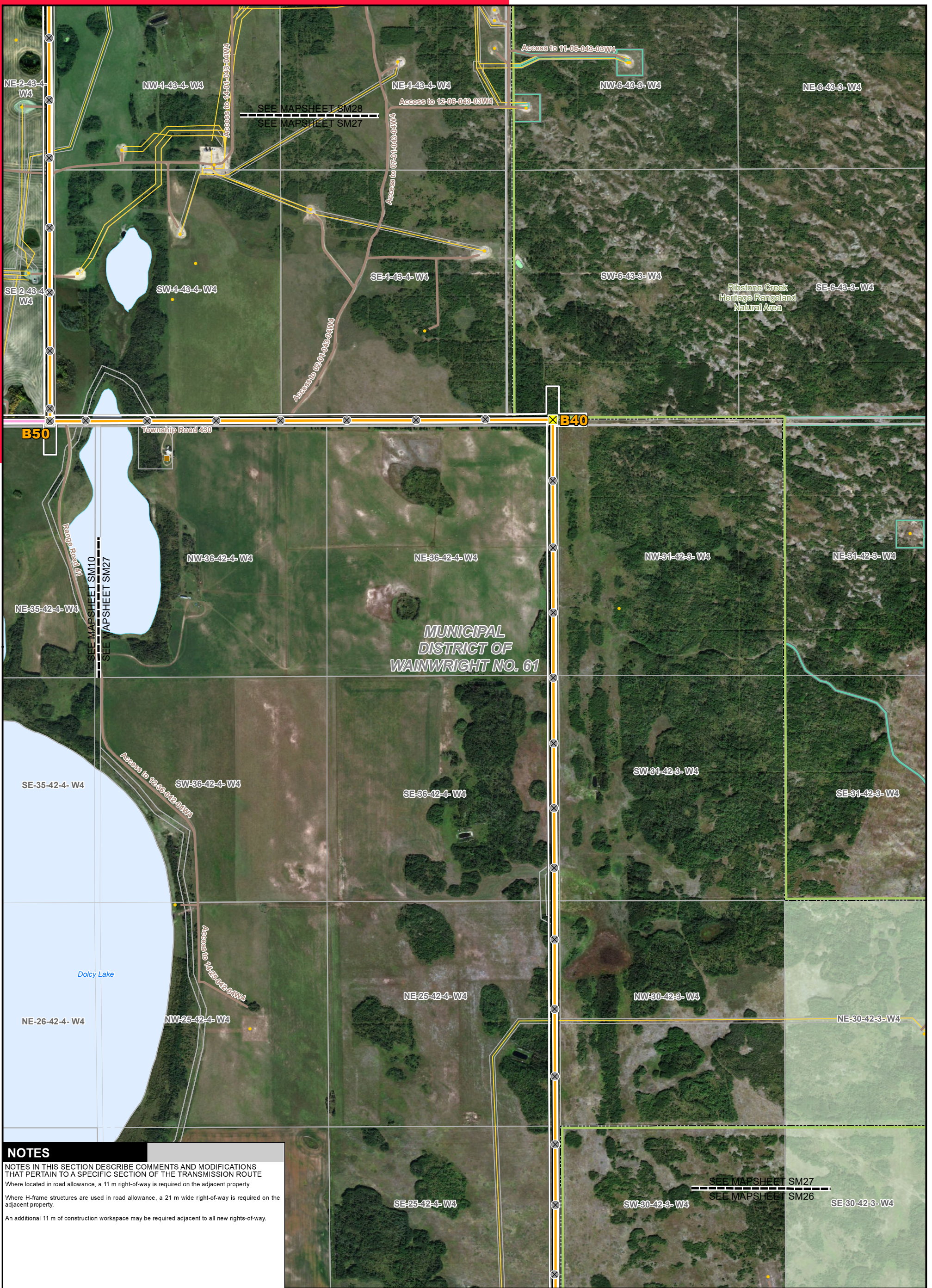
0 0.2 0.4 0.6 Kilometres
 0 0.1 0.2 0.3 Miles

Photography dated: 2012 Source: Esri Basemap Imagery
 Although there is no reason to believe that there are any errors associated with the data used to generate this product or in the product itself, users of these data are advised that errors in the data may be present.

STRIP MOSAIC SM26

ALTALINK
 A BERKSHIRE HATHAWAY ENERGY COMPANY

POTENTIAL
 Provost to Edgerton and Niirem to Vermilion Transmission Development
 Provost to Edgerton Component



NOTES

NOTES IN THIS SECTION DESCRIBE COMMENTS AND MODIFICATIONS THAT PERTAIN TO A SPECIFIC SECTION OF THE TRANSMISSION ROUTE

Where located in road allowance, a 11 m right-of-way is required on the adjacent property.

Where H-frame structures are used in road allowance, a 21 m wide right-of-way is required on the adjacent property.

An additional 11 m of construction workspace may be required adjacent to all new rights-of-way.

LEGEND	
● Point Designation	Preferred 240 kV Transmission Line Alignment - Stage 2
⊗ Monopole Structure	Alternate 240 kV Transmission Line Alignment - Stage 1
⊗ 2-pole Structure	Alternate 240 kV Transmission Line Alignment - Stage 2
⊗ 3-pole Structure	Potential Route Variant
⊗ H-frame Structure	Potential Realignment of Existing Transmission Line
● Existing Transmission Structure	Buried Fibre Optic Cable
● Existing Substation	Potential Access Trail
● Preferred 240 kV Transmission Line Alignment - Stage 1	Right-of-Way Boundary
	Potential Construction Workspace
	Fenceline
	Potential Substation Upgrade
	Hamlet or Locality
	Residence
	Wellsite
	Municipal or County Boundary
	Pipeline
	Road
	Railway
	Crown Land
	Environmentally Significant Area
	Military Base
	Other Protected Area
	Urban Area
	Water Body

NO.: XXXXXXXXXX
 DRAWN: SG - JACOBS
 FILE NO.: XXXXXXXX
 REVISION: 0.00.00
 AL FOLDER: PENV
DATE: 2020-03-25

0 0.2 0.4 0.6 Kilometres
 0 0.1 0.2 0.3 Miles

Photography dated: 2012 Source: Esri Basemap Imagery
 Although there is no reason to believe that there are any errors associated with the data used to generate this product or in the product itself, users of these data are advised that errors in the data may be present.

STRIP MOSAIC SM27

ALTALINK
 A BERKSHIRE HATHAWAY ENERGY COMPANY

POTENTIAL
 Provost to Edgerton and Niirem to Vermilion Transmission Development
 Provost to Edgerton Component

NOTES

NOTES IN THIS SECTION DESCRIBE COMMENTS AND MODIFICATIONS THAT PERTAIN TO A SPECIFIC SECTION OF THE TRANSMISSION ROUTE
 Where located in road allowance, a 11 m right-of-way is required on the adjacent property.
 Where H-frame structures are used in road allowance, a 21 m wide right-of-way is required on the adjacent property.
 An additional 11 m of construction workspace may be required adjacent to all new rights-of-way.



LEGEND

● Point Designation	Preferred 240 kV Transmission Line Alignment - Stage 2	— Right-of-Way Boundary	— Pipeline
⊗ Monopole Structure	Alternate 240 kV Transmission Line Alignment - Stage 1	— Potential Construction Workspace	— Road
⊗ 2-pole Structure	Alternate 240 kV Transmission Line Alignment - Stage 2	— Fenceline	— Railway
⊗ 3-pole Structure	Potential Route Variant	— Potential Substation Upgrade	— Crown Land
⊗ H-frame Structure	Potential Realignment of Existing Transmission Line	● Hamlet or Locality	— Environmentally Significant Area
● Existing Transmission Structure	Buried Fibre Optic Cable	● Residence	— Military Base
● Existing Substation	Potential Access Trail	● Wellsite	— Other Protected Area
— Preferred 240 kV Transmission Line Alignment - Stage 1	— Existing Transmission Line	— Municipal or County Boundary	— Urban Area
			— Water Body

NO.: XXXXXXXXXX
 DRAWN: SG - JACOBS
 FILE NO.: XXXXXXXX
 REVISION: 0.00.00
 AL FOLDER: PENV
DATE: 2020-03-25

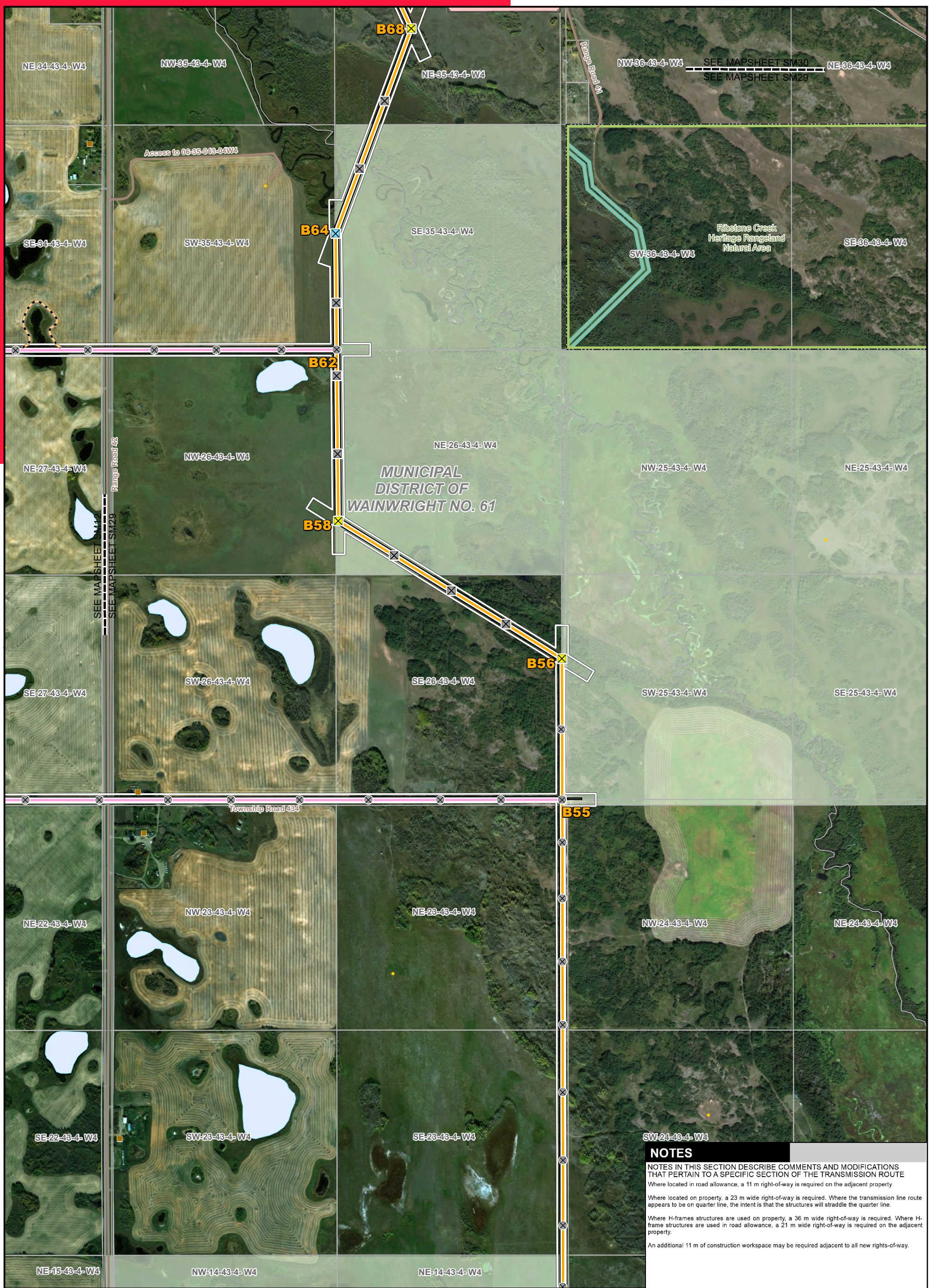
Photography dated: 2012 Source: Esri Basemap Imagery
 Although there is no reason to believe that there are any errors associated with the data used to generate this product or in the product itself, users of these data are advised that errors in the data may be present.

0 0.2 0.4 0.6 Kilometres
 0 0.1 0.2 0.3 Miles

STRIP MOSAIC SM28

ALTALINK
 A BERKSHIRE HATHAWAY ENERGY COMPANY

POTENTIAL
 Provost to Edgerton and Niirem to Vermilion Transmission Development
 Provost to Edgerton Component



NOTES

NOTES IN THIS SECTION DESCRIBE COMMENTS AND MODIFICATIONS THAT PERTAIN TO A SPECIFIC SECTION OF THE TRANSMISSION ROUTE

Where located in road allowance, a 11 m right-of-way is required on the adjacent property.

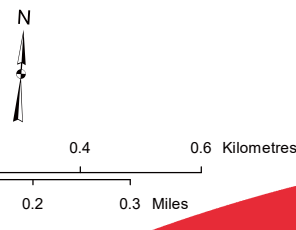
Where located on property, a 23 m wide right-of-way is required. Where the transmission line route appears to be on quarter line, the intent is that the structures will straddle the quarter line.

Where H-frame structures are used on property, a 36 m wide right-of-way is required. Where H-frame structures are used in road allowance, a 21 m wide right-of-way is required on the adjacent property.

An additional 11 m of construction workspace may be required adjacent to all new rights-of-way.

LEGEND	
● Point Designation	Preferred 240 kV Transmission Line Alignment - Stage 2
⊗ Monopole Structure	Alternate 240 kV Transmission Line Alignment - Stage 1
⊗ 2-pole Structure	Alternate 240 kV Transmission Line Alignment - Stage 2
⊗ 3-pole Structure	Potential Route Variant
⊗ H-frame Structure	Potential Realignment of Existing Transmission Line
● Existing Transmission Structure	Buried Fibre Optic Cable
● Existing Substation	Potential Access Trail
— Preferred 240 kV Transmission Line Alignment - Stage 1	— Existing Transmission Line
— Right-of-Way Boundary	— Pipeline
— Potential Construction Workspace	— Road
— Fenceline	— Railway
— Potential Substation Upgrade	— Crown Land
● Hamlet or Locality	— Environmentally Significant Area
● Residence	— Military Base
● Wellsite	— Other Protected Area
— Municipal or County Boundary	— Urban Area
	— Water Body

NO.: XXXXXXXXXX
 DRAWN: SG - JACOBS
 FILE NO.: XXXXXXXX
 REVISION: 0.00.00
 AL FOLDER: PENV
DATE: 2020-03-25



STRIP MOSAIC **SM29**



POTENTIAL
 Provost to Edgerton and Niirem to Vermilion Transmission Development
 Provost to Edgerton Component

Photography dated: 2012 Source: Esri Basemap Imagery
 Although there is no reason to believe that there are any errors associated with the data used to generate this product or in the product itself, users of these data are advised that errors in the data may be present.

NOTES

NOTES IN THIS SECTION DESCRIBE COMMENTS AND MODIFICATIONS THAT PERTAIN TO A SPECIFIC SECTION OF THE TRANSMISSION ROUTE

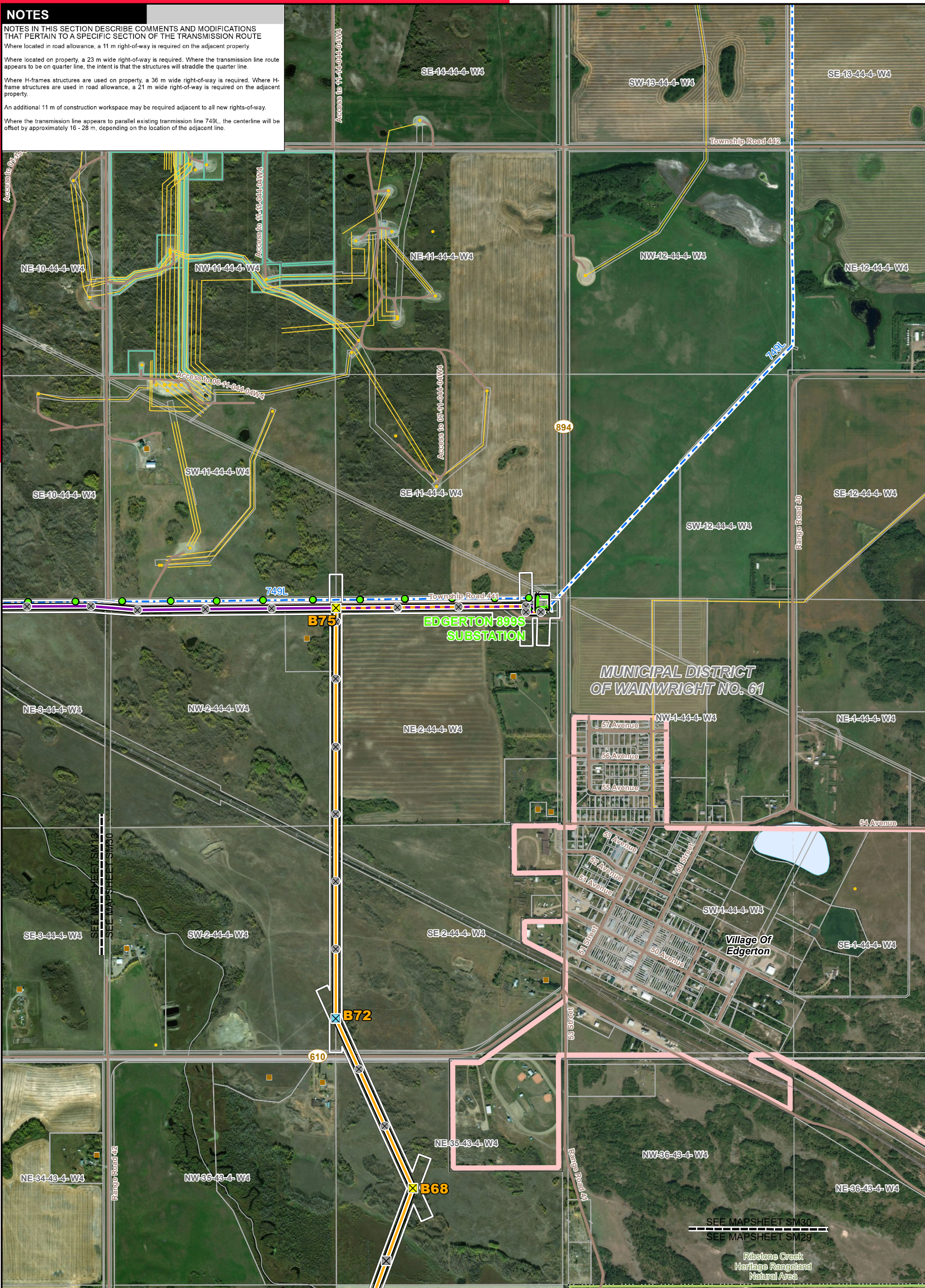
Where located in road allowance, a 11 m right-of-way is required on the adjacent property

Where located on property, a 23 m wide right-of-way is required. Where the transmission line route appears to be on quarter line, the intent is that the structures will straddle the quarter line.

Where H-frame structures are used on property, a 36 m wide right-of-way is required. Where H-frame structures are used in road allowance, a 21 m wide right-of-way is required on the adjacent property.

An additional 11 m of construction workspace may be required adjacent to all new rights-of-way.

Where the transmission line appears to parallel existing transmission line 749L, the centerline will be offset by approximately 16 - 28 m, depending on the location of the adjacent line.



LEGEND

● Point Designation	Preferred 240 kV Transmission Line Alignment - Stage 2	Right-of-Way Boundary	Pipeline
⊗ Monopole Structure	Alternate 240 kV Transmission Line Alignment - Stage 1	Potential Construction Workspace	Road
⊗ 2-pole Structure	Alternate 240 kV Transmission Line Alignment - Stage 2	Fenceline	Railway
⊗ 3-pole Structure	Potential Route Variant	Potential Substation Upgrade	Crown Land
⊗ H-frame Structure	Potential Realignment of Existing Transmission Line	Hamlet or Locality	Environmentally Significant Area
● Existing Transmission Structure	Buried Fibre Optic Cable	Residence	Military Base
● Preferred 240 kV Transmission Line Alignment - Stage 1	Potential Access Trail	Wellsite	Other Protected Area
		Municipal or County Boundary	Urban Area
			Water Body

NO.: XXXXXXXXXX
 DRAWN: SG - JACOBS
 FILE NO.: XXXXXXXX
 REVISION: 0.00.00
 AL FOLDER: PENV
DATE: 2020-03-25

0 0.2 0.4 0.6 Kilometres
 0 0.1 0.2 0.3 Miles

Photography dated: 2012 Source: Esri Basemap Imagery
 Although there is no reason to believe that there are any errors associated with the data used to generate this product or the product itself, users of these data are advised that errors in the data may be present.

STRIP MOSAIC SM30

ALTALINK
 A BERKSHIRE HATHAWAY ENERGY COMPANY

POTENTIAL
 Provost to Edgerton and Niirem to Vermilion Transmission Development
 Provost to Edgerton Component