

LEGEND

- Point Designation
- Potential Transmission Line
- - - Existing Transmission Line
- Potential Right of Way Boundary
- ▭ Proposed Customer Substation Target Area
- ▭ Existing Substation Fenceline
- ▭ Mapsheet
- Residence
- Railway
- Road
- ▭ Municipal or County Boundary
- ▭ Piikani Nation
- ▭ Water Body

NO: 35036694 - 6201
 DRAWN: SG - AL
 FILE NO.: XXXXXXXX
 REVISION: 0.00.05
 AL FOLDER: Piikani Wind Farm Connection
DATE: 2026-02-24

0 0.5 1 Kilometres
 0 0.5 Miles

STRIP INDEX **SI**

ALTALINK

POTENTIAL
 Piikani Wind Farm Connection

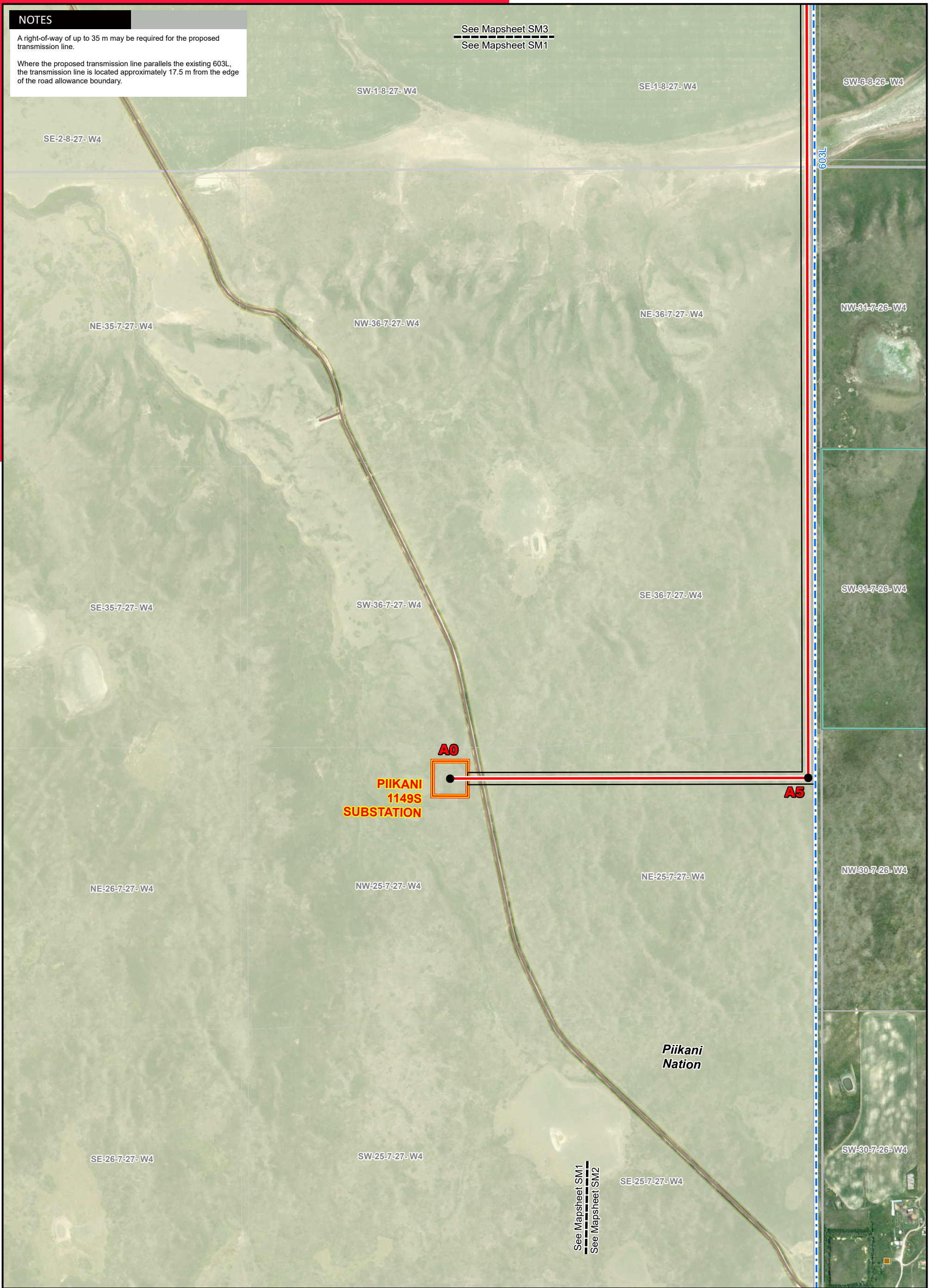
Although there is no reason to believe that there are any errors associated with the data used to generate this product or in the product itself, users of these data are advised that errors in the data may be present.

NOTES

A right-of-way of up to 35 m may be required for the proposed transmission line.

Where the proposed transmission line parallels the existing 603L, the transmission line is located approximately 17.5 m from the edge of the road allowance boundary.

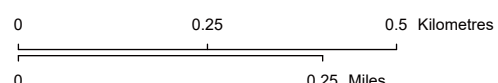
See Mapsheet SM3
See Mapsheet SM1



LEGEND

- Point Designation
- Potential Transmission Line
- - - Existing Transmission Line
- Potential Right of Way Boundary
- ▭ Proposed Customer Substation Target Area
- ▭ Existing Substation Fenceline
- Residence
- Wellsite
- Railway
- Road
- ▭ Crown Land
- ▭ Gravel Pit
- ▭ Municipal or County Boundary
- ▭ Piikani Nation
- ▭ Water Body

NO: 35036694 - 6201
DRAWN: SG - AL
FILE NO.: XXXXXXX
REVISION: 0.01.05
AL FOLDER: Piikani Wind Farm Connection
DATE: 2026-02-24



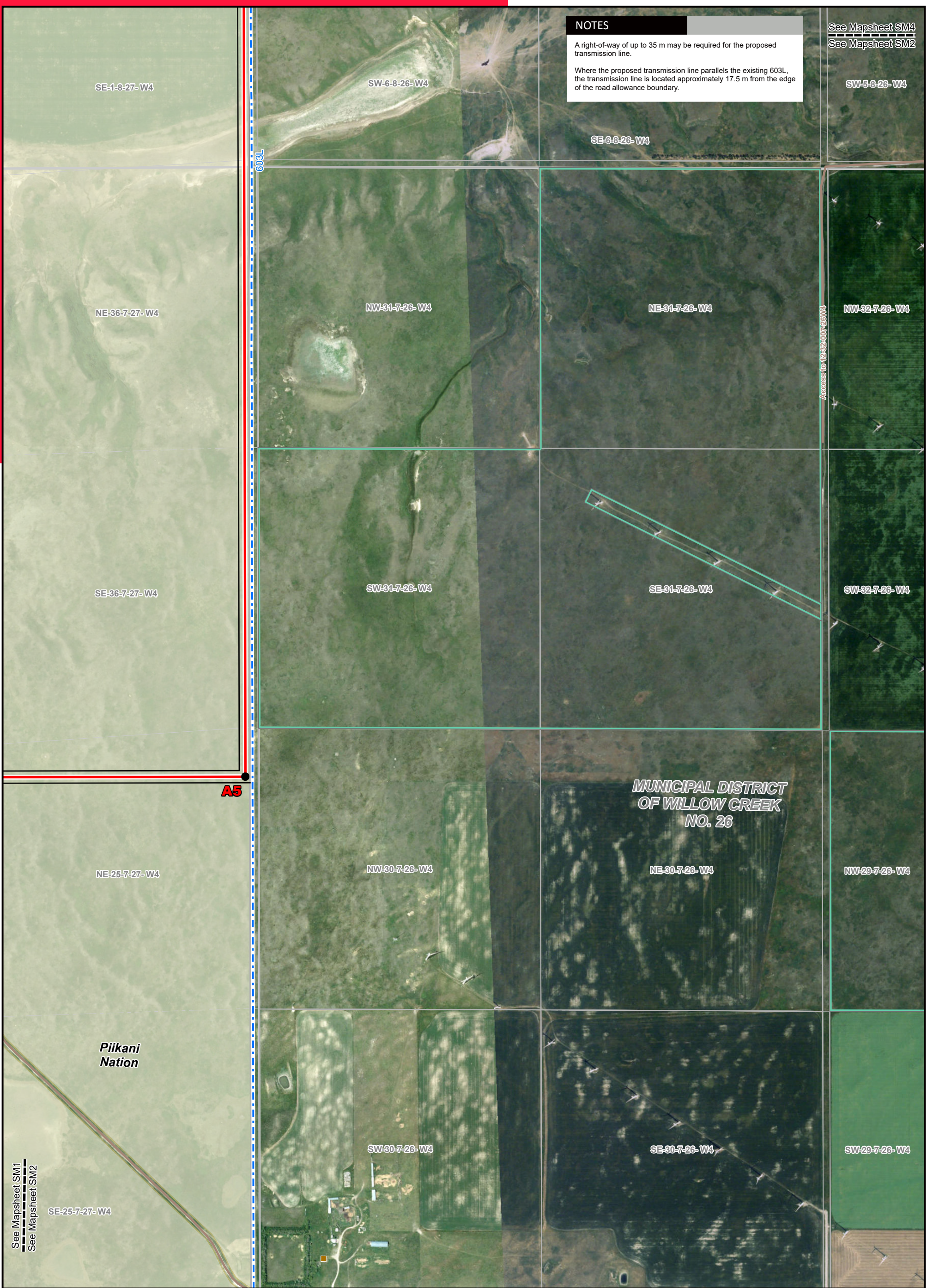
STRIP MOSAIC SM1



POTENTIAL

Piikani Wind Farm Connection

Service Layer Credits: Source: Esri, Maxar, Earthstar Geographics, and the GIS User Community
Although there is no reason to believe that there are any errors associated with the data used to generate this product or in the product itself, users of these data are advised that errors in the data may be present.



NOTES

A right-of-way of up to 35 m may be required for the proposed transmission line.

Where the proposed transmission line parallels the existing 603L, the transmission line is located approximately 17.5 m from the edge of the road allowance boundary.

See Mapsheet SM4
See Mapsheet SM2

LEGEND

- Point Designation
- Potential Transmission Line
- - - Existing Transmission Line
- Potential Right of Way Boundary
- ▭ Proposed Customer Substation Target Area
- ▭ Existing Substation Fenceline
- Residence
- Wellsite
- Railway
- Road
- ▭ Crown Land
- ▭ Gravel Pit
- ▭ Municipal or County Boundary
- ▭ Piikani Nation
- ▭ Water Body

NO: 35036694 - 6201
DRAWN: SG - AL
FILE NO.: XXXXXXX
REVISION: 0.01.05
AL FOLDER: Piikani Wind Farm Connection

DATE: 2026-02-24

0 0.25 0.5 Kilometres
0 0.25 Miles



STRIP MOSAIC SM2



POTENTIAL

Piikani Wind Farm Connection

Service Layer Credits: Source: Esri, Maxar, Earthstar Geographics, and the GIS User Community
Although there is no reason to believe that there are any errors associated with the data used to generate this product or in the product itself, users of these data are advised that errors in the data may be present.

NOTES

Where the transmission line is located on private property, up to 35 m of right-of-way may be required.

Where the proposed transmission line parallels the existing 603L, the transmission line is located approximately 17.5 m from the edge of the road allowance boundary.

See Mapsheet SM5
See Mapsheet SM3

NE-12-8-27- W4

NW-7-8-26- W4

NE-7-8-26- W4

A30

B35

**Piikani
Nation**

SW-12-8-27- W4

SE-12-8-27- W4

SW-7-8-26- W4

SE-7-8-26- W4

See Mapsheet SM3
See Mapsheet SM4

NW-1-8-27- W4

NE-1-8-27- W4

603L

NW-6-8-26- W4

NE-6-8-26- W4

**MUNICIPAL DISTRICT
OF WILLOW CREEK
NO. 26**

SW-1-8-27- W4

SE-1-8-27- W4

See Mapsheet SM3
See Mapsheet SM1

SW-6-8-26- W4

SE-6-8-26- W4

NW-36-7-27- W4

NE-36-7-27- W4

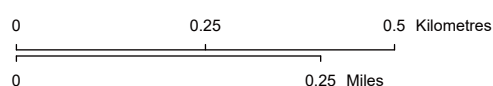
NW-31-7-26- W4

NE-31-7-26- W4

LEGEND

- Point Designation
- Potential Transmission Line
- - - Existing Transmission Line
- Potential Right of Way Boundary
- ▭ Proposed Customer Substation Target Area
- ▭ Existing Substation Fenceline
- Residence
- Wellsite
- Railway
- Road
- ▭ Crown Land
- ▭ Gravel Pit
- ▭ Municipal or County Boundary
- ▭ Piikani Nation
- ▭ Water Body

NO: 35036694 - 6201
DRAWN: SG - AL
FILE NO.: XXXXXXX
REVISION: 0.01.05
AL FOLDER: Piikani Wind Farm Connection
DATE: 2026-02-24



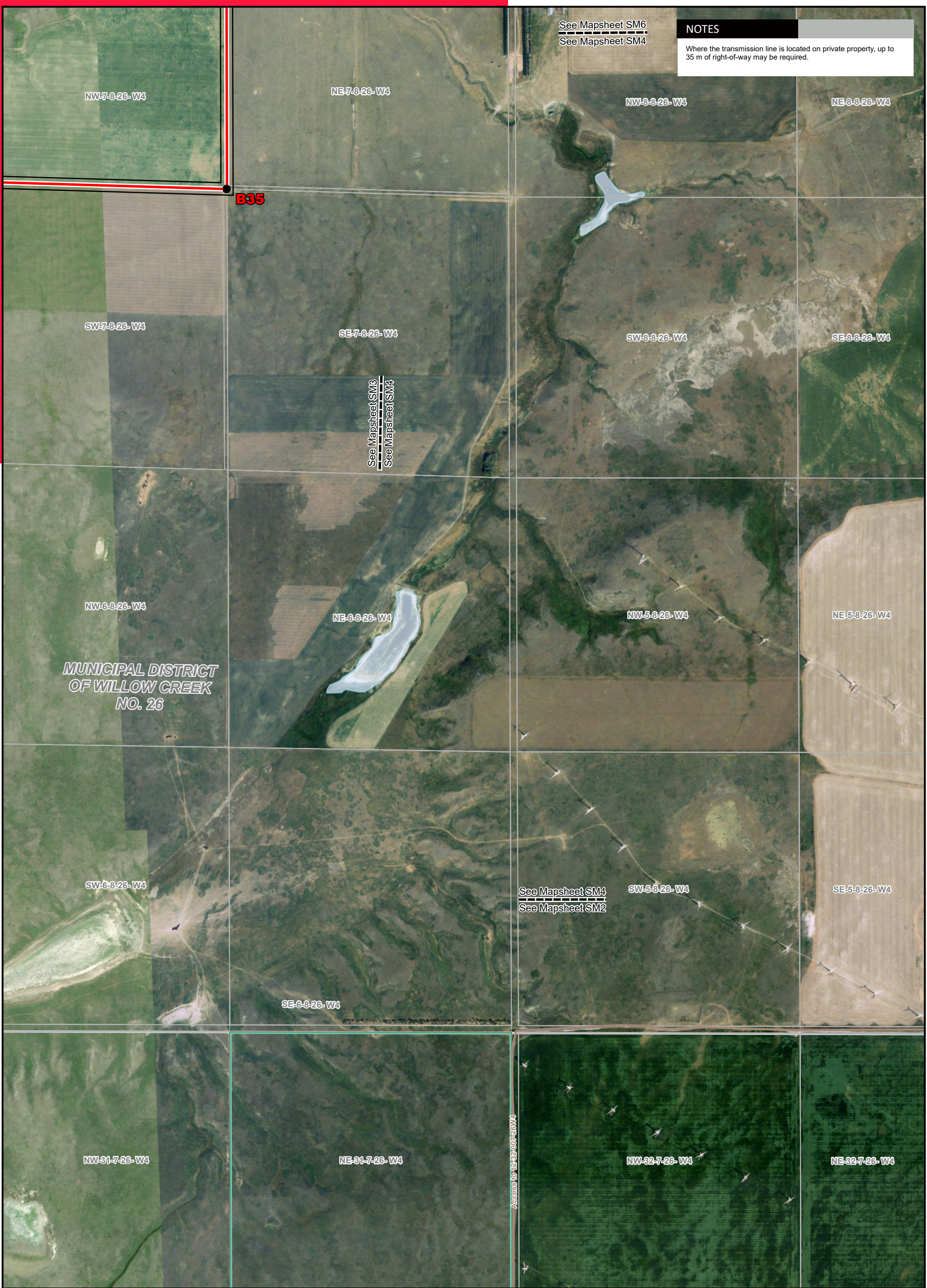
STRIP MOSAIC SM3



POTENTIAL

Piikani Wind Farm Connection

Service Layer Credits: Source: Esri, Maxar, Earthstar Geographics, and the GIS User Community
Although there is no reason to believe that there are any errors associated with the data used to generate this product or in the product itself, users of these data are advised that errors in the data may be present.



NOTES
 Where the transmission line is located on private property, up to 35 m of right-of-way may be required.

See Mapsheet SM6
 See Mapsheet SM4

See Mapsheet SM3
 See Mapsheet SM4

See Mapsheet SM4
 See Mapsheet SM2

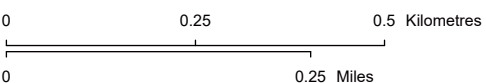
**MUNICIPAL DISTRICT
 OF WILLOW CREEK
 NO. 26**

Access to 12-82-007-23W4

LEGEND

- Point Designation
- Potential Transmission Line
- - - Existing Transmission Line
- Potential Right of Way Boundary
- ▭ Proposed Customer Substation Target Area
- ▭ Existing Substation Fenceline
- Residence
- Wellsite
- Railway
- Road
- ▭ Crown Land
- ▭ Gravel Pit
- ▭ Municipal or County Boundary
- ▭ Piikani Nation
- ▭ Water Body

NO: 35036694 - 6201
 DRAWN: SG - AL
 FILE NO.: XXXXXXX
 REVISION: 0.01.05
 AL FOLDER: Piikani Wind Farm Connection
DATE: 2026-02-24



STRIP MOSAIC SM4



POTENTIAL

Piikani Wind Farm Connection

Service Layer Credits: Source: Esri, Maxar, Earthstar Geographics, and the GIS User Community
 Although there is no reason to believe that there are any errors associated with the data used to generate this product or in the product itself, users of these data are advised that errors in the data may be present.

NOTES

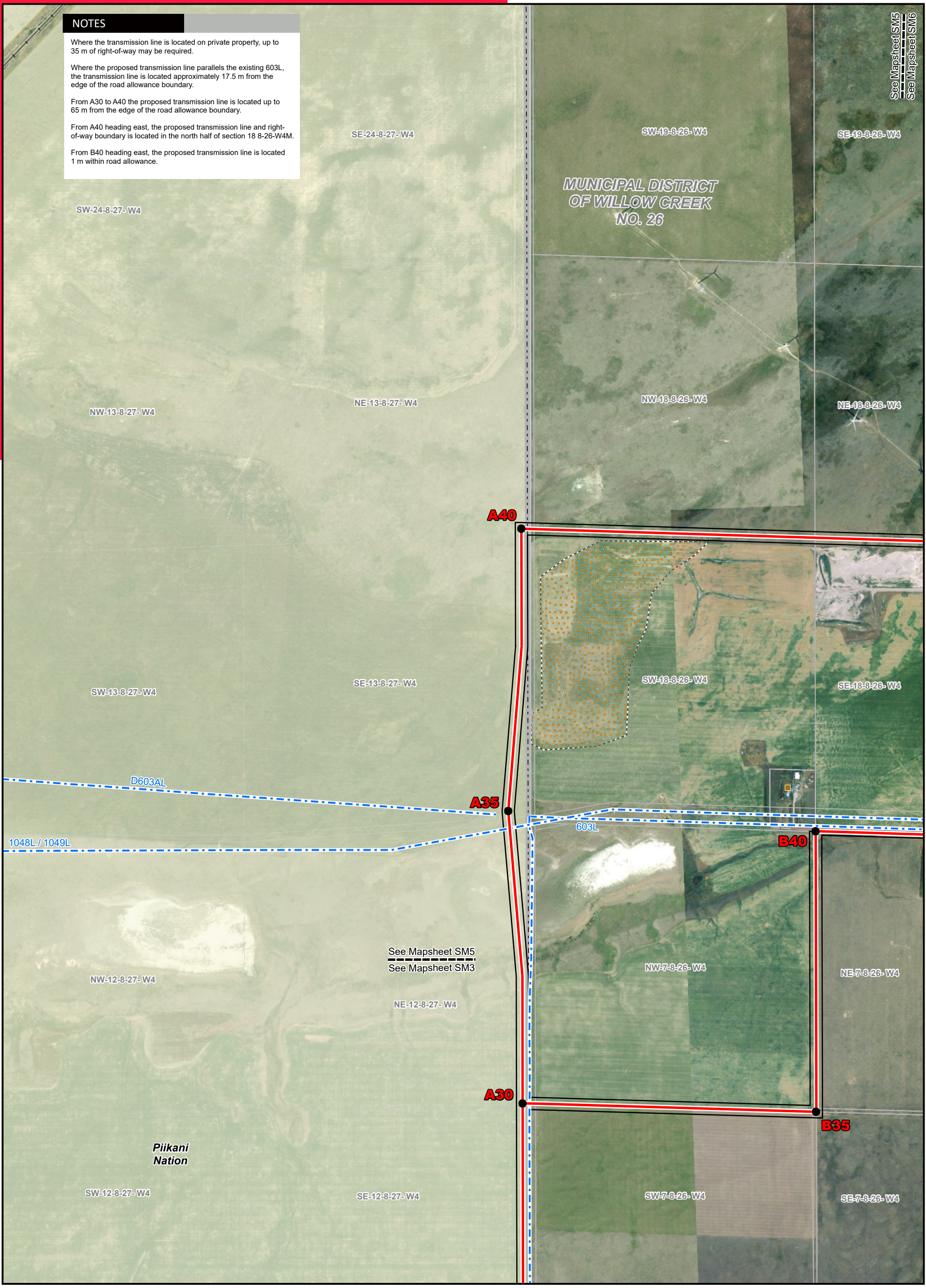
Where the transmission line is located on private property, up to 35 m of right-of-way may be required.

Where the proposed transmission line parallels the existing 603L, the transmission line is located approximately 17.5 m from the edge of the road allowance boundary.

From A30 to A40 the proposed transmission line is located up to 65 m from the edge of the road allowance boundary.

From A40 heading east, the proposed transmission line and right-of-way boundary is located in the north half of section 18 8-26-W4M.

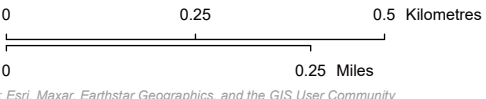
From B40 heading east, the proposed transmission line is located 1 m within road allowance.



LEGEND

- Point Designation
- Potential Transmission Line
- - - Existing Transmission Line
- Potential Right of Way Boundary
- ▭ Proposed Customer Substation Target Area
- ▭ Existing Substation Fenceline
- Residence
- Wellsite
- Railway
- Road
- ▭ Crown Land
- ▭ Gravel Pit
- ▭ Municipal or County Boundary
- ▭ Piikani Nation
- ▭ Water Body

NO: 35036694 - 6201
DRAWN: SG - AL
FILE NO.: XXXXXXX
REVISION: 0.01.05
AL FOLDER: Piikani Wind Farm Connection
DATE: 2026-02-24



STRIP MOSAIC SM5



POTENTIAL

Piikani Wind Farm Connection

Service Layer Credits: Source: Esri, Maxar, Earthstar Geographics, and the GIS User Community. Although there is no reason to believe that there are any errors associated with the data used to generate this product or in the product itself, users of these data are advised that errors in the data may be present.

See Mapsheet SM5
See Mapsheet SM6

NOTES

Where the transmission line is located on private property, up to 35 m of right-of-way may be required.

From A50 heading west, the proposed transmission line and right-of-way boundary is located in the north half of section 18 8-26-W4M.

From A50-A55 the proposed transmission line is located 1 m within road allowance.

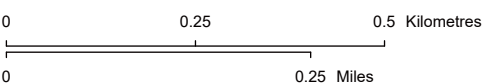
From B45 heading west, the proposed transmission line is located 1 m within road allowance.



LEGEND

- Point Designation
- Potential Transmission Line
- - - Existing Transmission Line
- - - Potential Right of Way Boundary
- ▭ Proposed Customer Substation Target Area
- ▭ Existing Substation Fenceline
- Residence
- Wellsite
- Railway
- Road
- ▭ Crown Land
- ▭ Gravel Pit
- ▭ Municipal or County Boundary
- ▭ Piikani Nation
- ▭ Water Body

NO: 35036694 - 6201
DRAWN: SG - AL
FILE NO.: XXXXXXX
REVISION: 0.01.05
AL FOLDER: Piikani Wind Farm Connection
DATE: 2026-02-24



STRIP MOSAIC **SM6**



POTENTIAL

Piikani Wind Farm Connection

Service Layer Credits: Source: Esri, Maxar, Earthstar Geographics, and the GIS User Community
Although there is no reason to believe that there are any errors associated with the data used to generate this product or in the product itself, users of these data are advised that errors in the data may be present.