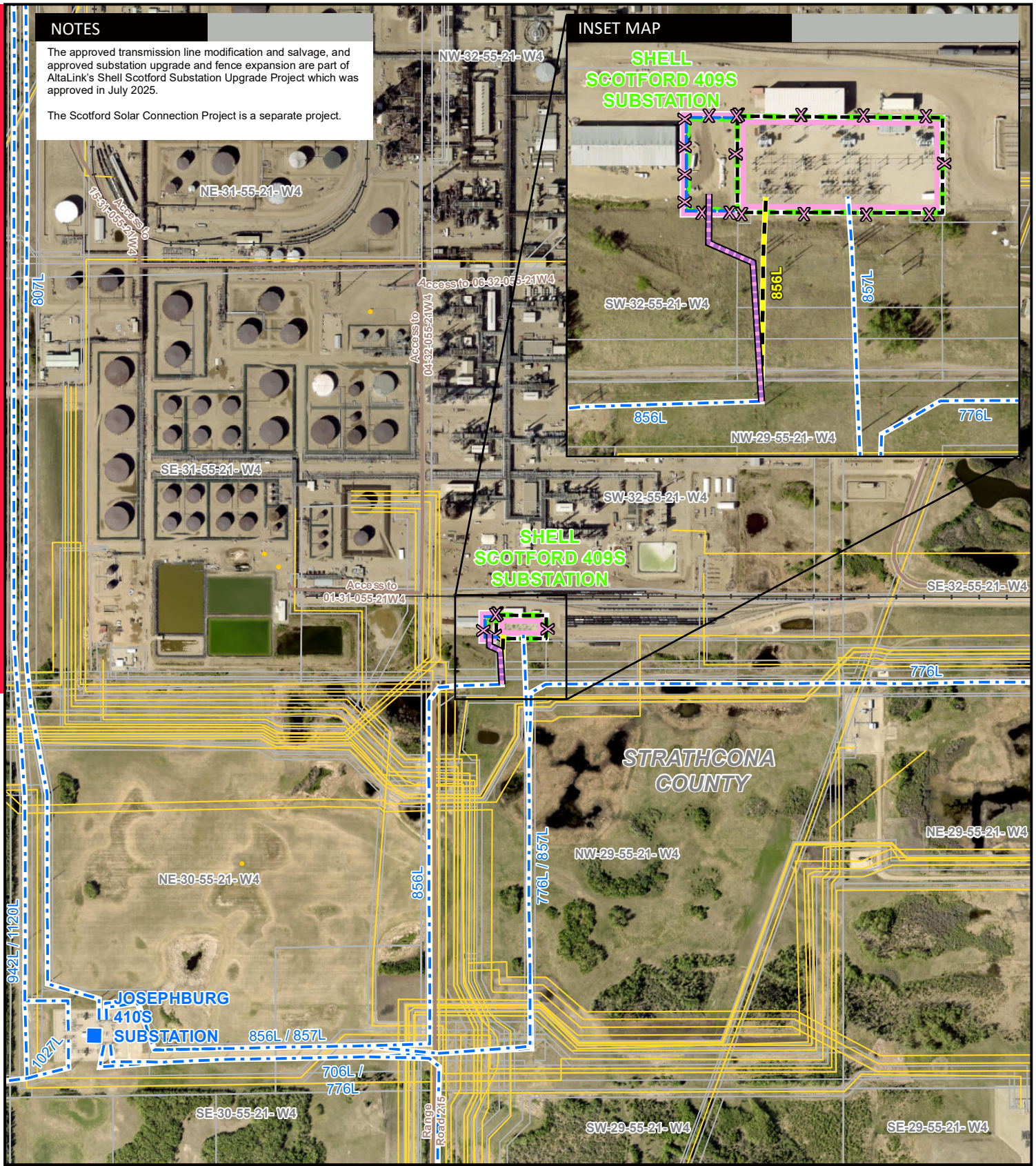
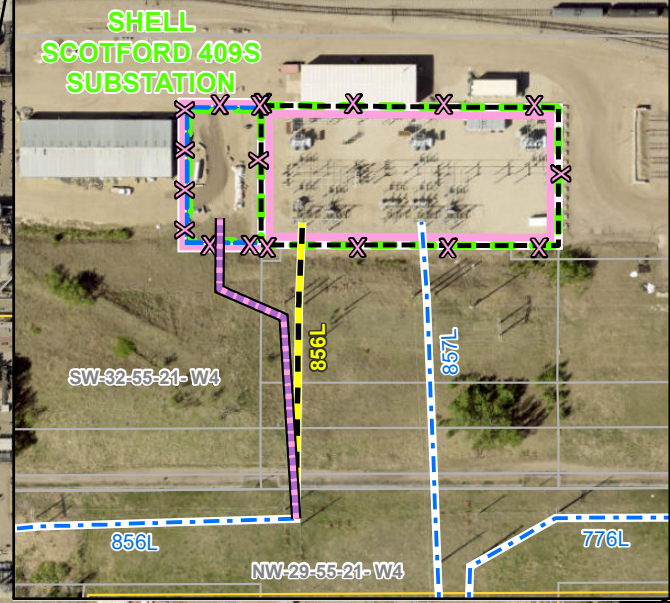


NOTES

The approved transmission line modification and salvage, and approved substation upgrade and fence expansion are part of AltaLink's Shell Scotford Substation Upgrade Project which was approved in July 2025.

The Scotford Solar Connection Project is a separate project.

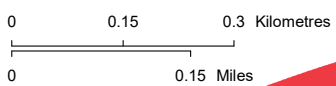
INSET MAP



LEGEND

- Existing Substation
 - Existing Transmission Line
 - Proposed Upgrade to Existing Substation
 - Wellsite
 - Pipeline
 - Railway
 - Road
- OTHER ALTALINK PROJECTS IN THE AREA**
- Approved Transmission Line Modification
 - Approved Salvage of Existing Transmission Line
 - ✕ Approved Substation Fenceline Expansion
 - ✕ Approved Upgrade to Existing Substation Fenceline

NO:
DRAWN: SG - AL
FILE NO.: XXXXXXX
REVISION: 0.00.02
AL FOLDER: Scotford Solar Connection Project
DATE: 2025-08-15



DETAIL PHOTO DP1



PROPOSED

Scotford Solar Connection Project

Service Layer Credits: Source: Esri, Maxar, Earthstar Geographics, and the GIS User Community
Although there is no reason to believe that there are any errors associated with the data used to generate this product or in the product itself, users of these data are advised that errors in the data may be present.