

LEGEND

● Point Designation	▭ Proposed Customer Substation Target Area	▭ Other Protected Area
▲ Potential Telecommunication Tower	▭ Mapsheet	▭ Park
▲ Existing Radio Tower	● Hamlet or Locality	▭ Urban Area
■ Existing Substation	● Residence	▭ Water Body
— Potential Transmission Line	— Railway	
--- Existing Transmission Line	— Road	
— Potential Right of Way Boundary	▭ Municipal or County Boundary	

NO: 35036622 - 6103
 DRAWN: SG - AL
 FILE NO.: XXXXXXX
 REVISION: 0.00.03
 AL FOLDER: St_Albert_Villeneuve Solar_Connection
DATE: 2025-11-03

0 0.5 1 Kilometres
 0 0.5 Miles

N

STRIP INDEX **SI**

ALTALINK

POTENTIAL

St. Albert Villeneuve Solar Connection

Although there is no reason to believe that there are any errors associated with the data used to generate this product or in the product itself, users of these data are advised that errors in the data may be present.

NOTES

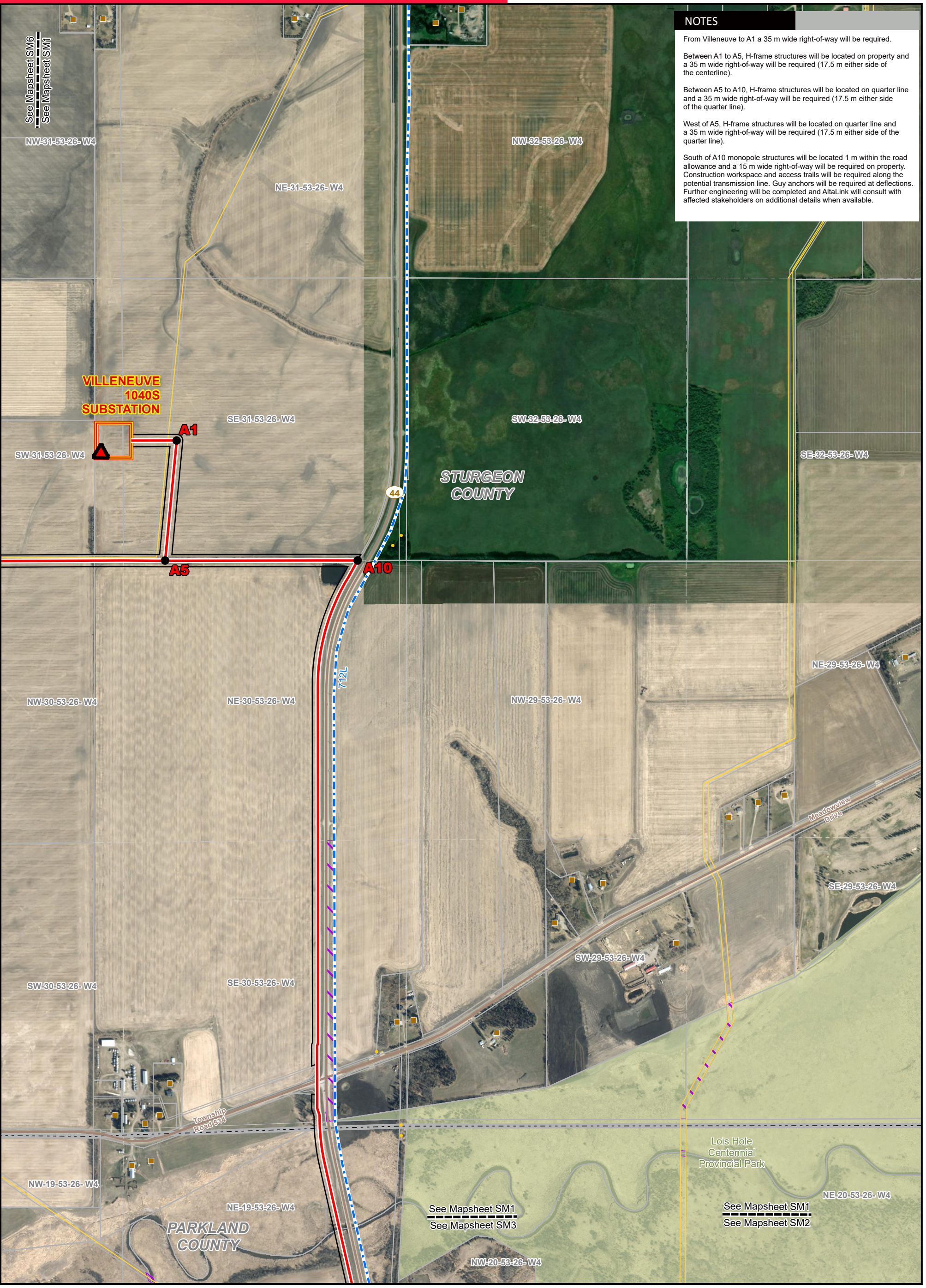
From Villeneuve to A1 a 35 m wide right-of-way will be required.

Between A1 to A5, H-frame structures will be located on property and a 35 m wide right-of-way will be required (17.5 m either side of the centerline).

Between A5 to A10, H-frame structures will be located on quarter line and a 35 m wide right-of-way will be required (17.5 m either side of the quarter line).

West of A5, H-frame structures will be located on quarter line and a 35 m wide right-of-way will be required (17.5 m either side of the quarter line).

South of A10 monopole structures will be located 1 m within the road allowance and a 15 m wide right-of-way will be required on property. Construction workspace and access trails will be required along the potential transmission line. Guy anchors will be required at deflections. Further engineering will be completed and AltaLink will consult with affected stakeholders on additional details when available.



LEGEND

● Point Designation	■ Residence	■ Park
▲ Potential Telecommunication Tower	● Wellsite	■ Urban Area
■ Existing Substation	— Pipeline	■ Water Body
— Potential Transmission Line	— Road	
— Existing Transmission Line	— Crown Land	
— Potential Right of Way Boundary	— Municipal or County Boundary	
■ Proposed Customer Substation Target Area	■ Other Protected Area	

NO: 35036622 - 6103
 DRAWN: SG - AL
 FILE NO.: XXXXXXX
 REVISION: 0.01.03
 AL FOLDER: St_Albert_Villeneuve Solar_Connection

DATE: 2025-11-03

0 0.25 0.5 Kilometres
 0 0.25 Miles

STRIP MOSAIC SM1

ALTALINK

POTENTIAL

St. Albert Villeneuve Solar Connection

Service Layer Credits: Source: Esri, Maxar, Earthstar Geographics, and the GIS User Community. Although there is no reason to believe that there are any errors associated with the data used to generate this product or in the product itself, users of these data are advised that errors in the data may be present.

NOTES

The potential transmission line will have monopole structures with a 20 m right-of-way required on the side adjacent to AltaLink's existing transmission line and a 15 m right-of-way on the other side, on property.

Construction workspace and access trails will be required along the potential transmission line. Guy anchors will be required at deflections. Further engineering will be completed and AltaLink will consult with affected stakeholders on additional details when available.



LEGEND

● Point Designation	■ Residence	■ Park
▲ Potential Telecommunication Tower	● Wellsite	■ Urban Area
■ Existing Substation	— Pipeline	■ Water Body
— Potential Transmission Line	— Road	— Crown Land
— Existing Transmission Line	— Municipal or County Boundary	— Other Protected Area
— Potential Right of Way Boundary	—	
■ Proposed Customer Substation Target Area		

NO: 35036622 - 6103
 DRAWN: SG - AL
 FILE NO.: XXXXXXX
 REVISION: 0.01.03
 AL FOLDER: St_Albert_Villeneuve Solar_Connection

DATE: 2025-11-03

0 0.25 0.5 Kilometres
 0 0.25 Miles

N

STRIP MOSAIC SM2

ALTALINK

POTENTIAL

St. Albert Villeneuve Solar Connection

See Mapsheet SM3
 See Mapsheet SM2

See Mapsheet SM1
 See Mapsheet SM2

16

A50

A40

**SPRUCE GROVE
 595S
 SUBSTATION**

**PARKLAND
 COUNTY**

Lois Hole Centennial
 Provincial
 Park

NW-20-53-26- W4

NE-20-53-26- W4

NW-21-53-26- W4

NE-21-53-26- W4

SW-20-53-26- W4

SE-20-53-26- W4

SW-21-53-26- W4

SE-21-53-26- W4

NW-17-53-26- W4

NE-17-53-26- W4

NW-16-53-26- W4

NE-16-53-26- W4

Township Road 532A

905L

SW-17-53-26- W4

SE-17-53-26- W4

SW-16-53-26- W4

SE-16-53-26- W4

NW-8-53-26- W4

NE-8-53-26- W4

NW-9-53-26- W4

NE-9-53-26- W4

279 Street

677L

113 Avenue

272 Street

168 Street

146 Avenue

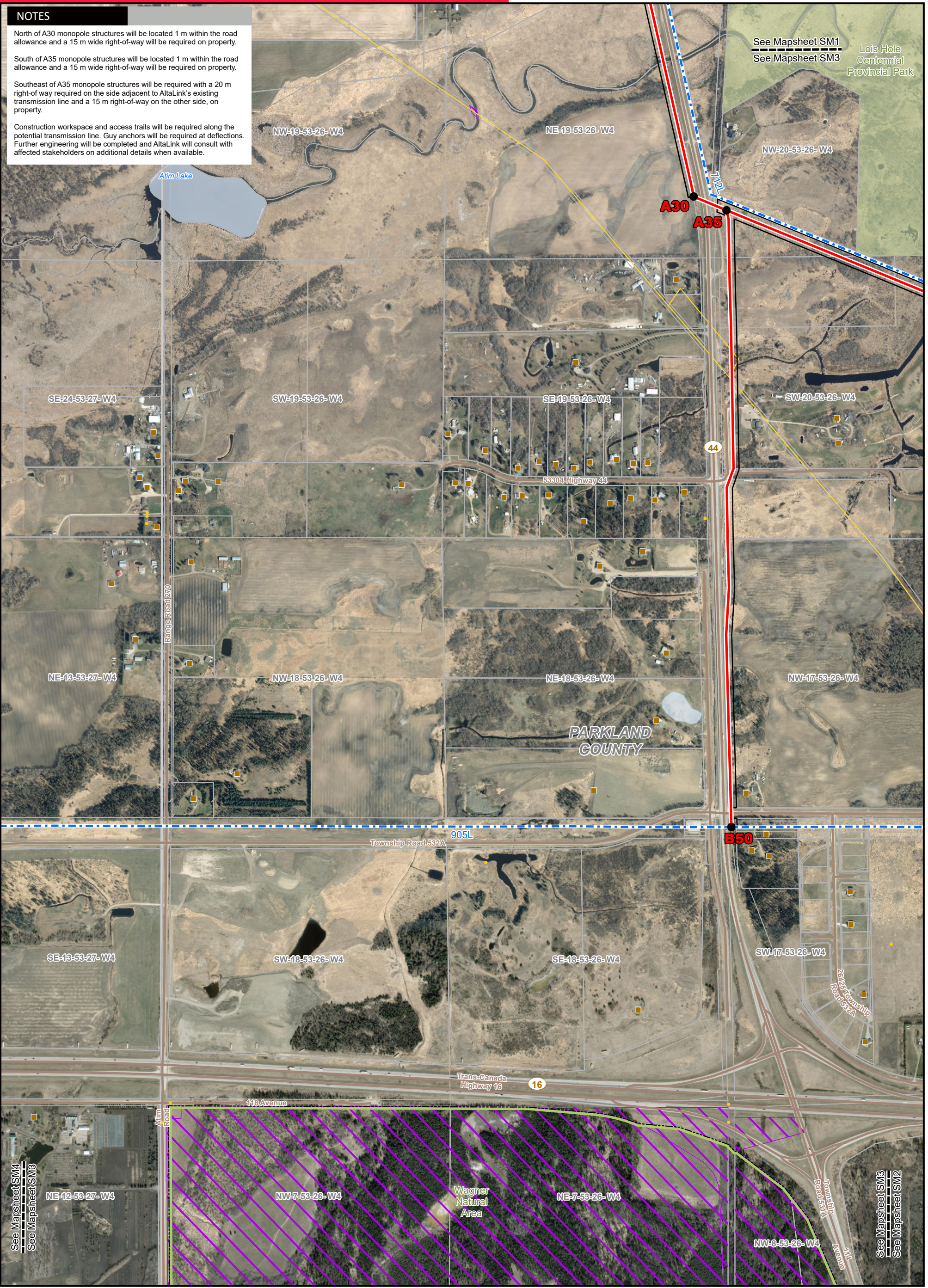
NOTES

North of A30 monopole structures will be located 1 m within the road allowance and a 15 m wide right-of-way will be required on property.

South of A35 monopole structures will be located 1 m within the road allowance and a 15 m wide right-of-way will be required on property.

Southeast of A35 monopole structures will be required with a 20 m right-of-way required on the side adjacent to AltaLink's existing transmission line and a 15 m right-of-way on the other side, on property.

Construction workspace and access trails will be required along the potential transmission line. Guy anchors will be required at deflections. Further engineering will be completed and AltaLink will consult with affected stakeholders on additional details when available.



See Mapsheet SM1
See Mapsheet SM3
Lois Hole Centennial Provincial Park

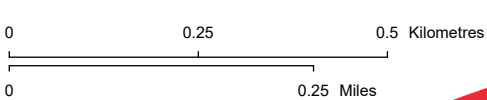
See Mapsheet SM4
See Mapsheet SM3

See Mapsheet SM3
See Mapsheet SM2

LEGEND

● Point Designation	■ Residence	■ Park
▲ Potential Telecommunication Tower	● Wellsite	■ Urban Area
■ Existing Substation	— Pipeline	■ Water Body
— Potential Transmission Line	— Road	■ Crown Land
— Existing Transmission Line	— Municipal or County Boundary	■ Other Protected Area
— Potential Right of Way Boundary	■ Proposed Customer Substation Target Area	

NO: 35036622 - 6103
DRAWN: SG - AL
FILE NO.: XXXXXXX
REVISION: 0.01.03
AL FOLDER: St. Albert Villeneuve Solar_Connection
DATE: 2025-11-03



STRIP MOSAIC SM3



POTENTIAL

St. Albert Villeneuve Solar Connection

Service Layer Credits: Source: Esri, Maxar, Earthstar Geographics, and the GIS User Community. Although there is no reason to believe that there are any errors associated with the data used to generate this product or in the product itself, users of these data are advised that errors in the data may be present.

NOTES

North of C50 monopole structures will be located 1 m within the road allowance and a 15 m wide right-of-way will be required on property.

Construction workspace and access trails will be required along the potential transmission line. Guy anchors will be required at deflections. Further engineering will be completed and AltaLink will consult with affected stakeholders on additional details when available.



LEGEND

- Point Designation
- ▲ Potential Telecommunication Tower
- Existing Substation
- Potential Transmission Line
- Existing Transmission Line
- Potential Right of Way Boundary
- ▭ Proposed Customer Substation Target Area
- Residence
- Wellsite
- Pipeline
- Road
- ▭ Crown Land
- ▭ Municipal or County Boundary
- ▭ Other Protected Area
- Park
- Urban Area
- Water Body

NO: 35036622 - 6103
 DRAWN: SG - AL
 FILE NO.: XXXXXXX
 REVISION: 0.01.03
 AL FOLDER: St_Albert_Villeneuve Solar_Connection

DATE: 2025-11-03

0 0.25 0.5 Kilometres
 0 0.25 Miles

N

STRIP MOSAIC SM4

ALTALINK

POTENTIAL

St. Albert Villeneuve Solar Connection

See Mapsheet SM4
 See Mapsheet SM3

Service Layer Credits: Source: Esri, Maxar, Earthstar Geographics, and the GIS User Community. Although there is no reason to believe that there are any errors associated with the data used to generate this product or in the product itself, users of these data are advised that errors in the data may be present.

NOTES

East of D10, H-frame structures will be located on quarter line and a 35 m wide right-of-way will be required (17.5 m either side of the quarter line).

East of D20, monopole structures will be located 1 m within the road allowance, and a 15 m wide right-of-way will be required on property. Between D10 to D20, monopole structures will be located 1 m within the road allowance, and a 15 m wide right-of-way will be required on property.

South of D20, monopole structures will be located 1 m within the road allowance, and a 15 m wide right-of-way will be required on property.

Construction workspace and access trails will be required along the potential transmission line. Guy anchors will be required at deflections. Further engineering will be completed and AltaLink will consult with affected stakeholders on additional details when available.

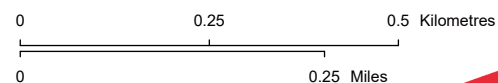


LEGEND

- Point Designation
- ▲ Potential Telecommunication Tower
- Existing Substation
- Potential Transmission Line
- - - Existing Transmission Line
- Potential Right of Way Boundary
- Proposed Customer Substation Target Area
- Residence
- Wellsite
- Pipeline
- Road
- Crown Land
- Municipal or County Boundary
- Other Protected Area
- Park
- Urban Area
- Water Body

NO: 35036622 - 6103
 DRAWN: SG - AL
 FILE NO.: XXXXXXX
 REVISION: 0.01.03
 AL FOLDER: St_Albert_Villeneuve
 Solar_Connection

DATE: 2025-11-03



STRIP MOSAIC SM5



POTENTIAL

St. Albert Villeneuve Solar Connection

Service Layer Credits: Source: Esri, Maxar, Earthstar Geographics, and the GIS User Community. Although there is no reason to believe that there are any errors associated with the data used to generate this product or in the product itself, users of these data are advised that errors in the data may be present.

NOTES

From Villeneuve Substation to A1 a 35 m wide right-of-way will be required.

Between A1 to A5, H-frame structures will be located on property and a 35 m wide right-of-way will be required (17.5 m either side of the centerline).

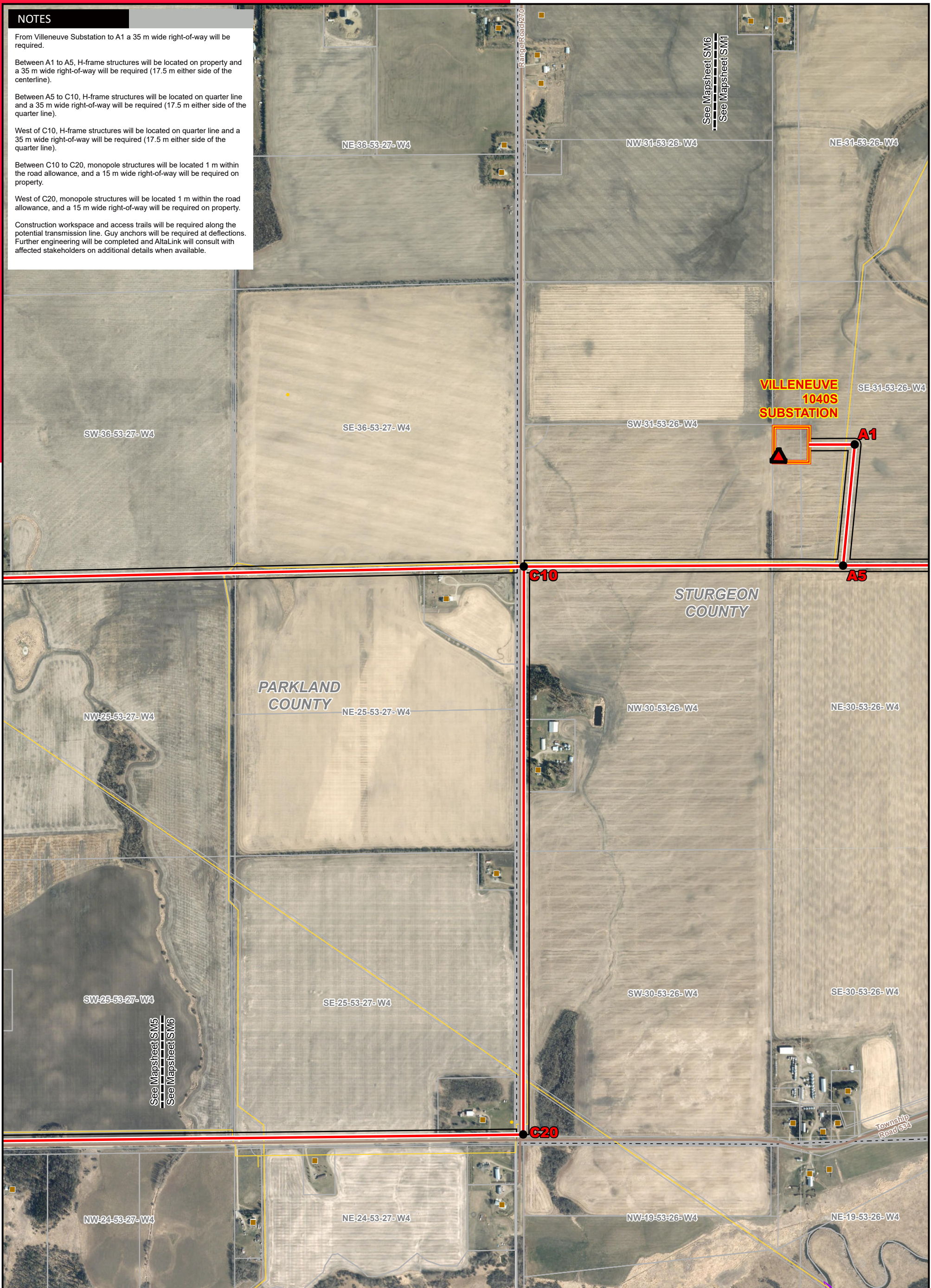
Between A5 to C10, H-frame structures will be located on quarter line and a 35 m wide right-of-way will be required (17.5 m either side of the quarter line).

West of C10, H-frame structures will be located on quarter line and a 35 m wide right-of-way will be required (17.5 m either side of the quarter line).

Between C10 to C20, monopole structures will be located 1 m within the road allowance, and a 15 m wide right-of-way will be required on property.

West of C20, monopole structures will be located 1 m within the road allowance, and a 15 m wide right-of-way will be required on property.

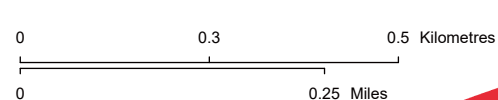
Construction workspace and access trails will be required along the potential transmission line. Guy anchors will be required at deflections. Further engineering will be completed and AltaLink will consult with affected stakeholders on additional details when available.



LEGEND

- Point Designation
- ▲ Potential Telecommunication Tower
- Existing Substation
- Potential Transmission Line
- Existing Transmission Line
- Potential Right of Way Boundary
- Proposed Customer Substation Target Area
- Residence
- Wellsite
- Pipeline
- Road
- ▭ Crown Land
- ▭ Municipal or County Boundary
- ▭ Other Protected Area
- Park
- Urban Area
- Water Body

NO: 35036622 - 6103
 DRAWN: SG - AL
 FILE NO.: XXXXXXX
 REVISION: 0.01.03
 AL FOLDER: St_Albert_Villeneuve_Solar_Connection
DATE: 2025-11-03



STRIP MOSAIC SM6



POTENTIAL

St. Albert Villeneuve Solar Connection

Service Layer Credits: Source: Esri, Maxar, Earthstar Geographics, and the GIS User Community. Although there is no reason to believe that there are any errors associated with the data used to generate this product or in the product itself, users of these data are advised that errors in the data may be present.