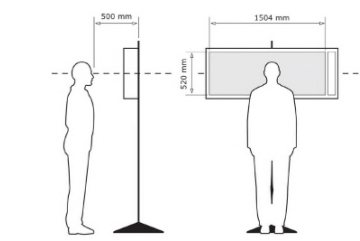




Easting Position 10TM:	63191.4
Northing Position 10TM:	5490651.4
Elevation of Viewpoint Position NAD83:	1184.8
Height of Camera Above Ground (m):	1186.4
Date of Photography:	21 July 2015 at 08:04 AM
Orientation of View:	WSW
Horizontal Field of View:	124°
Vertical Field of View:	55°

CORRECT VIEWING OF TRUEVIEW™ PHOTOSIMULATIONS



NOTES:
 Viewpoint locations have been precision surveyed by:
Boundary Technical Group Inc.
 421 East Lake Road
 Airdrie, Alberta T4A 2J7
 Projection and Datum:
 10TM (Alberta); NAD83
 Heights are above mean sea level.
 No part of this photosimulation shall be altered in any way.
 Structure design and placement are subject to final engineering.
 Structure placement is based on average ruling span for the structure type.

Photosimulation Created Using
 TrueView™ Technology
 (Patent No.: US 8,184,906 B2)

Provided by

Truescape®

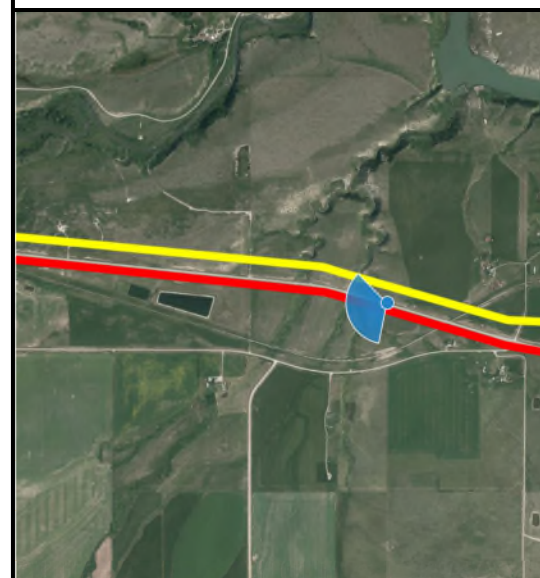
www.truescape.com



Viewpoint SH1 - Highway 3 (Crowsnest Highway - East of Lundbreck), Looking West-Southwest - Structure 1

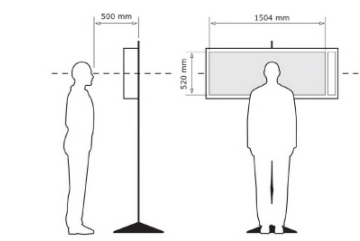
For on-screen display:
 Scale bar to be 4 inches (101.6 mm) wide
 Viewing distance 19.7 inches (50 cm)

- Viewpoint Location
- Representative Transmission Line Route in Road Allowance
- Representative Transmission Line Route outside of Road Allowance



Easting Position 10TM:	63191.4
Northing Position 10TM:	5490651.4
Elevation of Viewpoint Position NAD83:	1184.8
Height of Camera Above Ground (m):	1186.4
Date of Photography:	21 July 2015 at 08:04 AM
Orientation of View:	WSW
Horizontal Field of View:	124°
Vertical Field of View:	55°

CORRECT VIEWING OF TRUEVIEW™ PHOTOSIMULATIONS



NOTES:
Viewpoint locations have been precision surveyed by:
Boundary Technical Group Inc.
421 East Lake Road
Airdrie, Alberta T4A 2J7

Projection and Datum:
10TM (Alberta); NAD83

Heights are above mean sea level.
No part of this photosimulation shall be altered in any way.

Structure design and placement are subject to final engineering.
Structure placement is based on average ruling span for the structure type.

Photosimulation Created Using
TrueView™ Technology
(Patent No.: US 8,184,906 B2)

Provided by

Truescape®



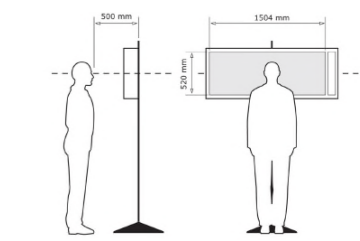
Viewpoint SH1 - Highway 3 (Crowsnest Highway - East of Lundbreck), Looking West-Southwest - Structure 1 - Double configuration

For on-screen display:
Scale bar to be 4 inches (101.6 mm) wide
Viewing distance 19.7 inches (50 cm)



Easting Position 10TM:	63191.4
Northing Position 10TM:	5490651.4
Elevation of Viewpoint Position NADE3:	1184.8
Height of Camera Above Ground (m):	1186.4
Date of Photography:	21 July 2015 at 08:04 AM
Orientation of View:	WSW
Horizontal Field of View:	124°
Vertical Field of View:	55°

CORRECT VIEWING OF TRUEVIEW™ PHOTOSIMULATIONS



NOTES:
Viewpoint locations have been precision surveyed by:
Boundary Technical Group Inc.
421 East Lake Road
Airdrie, Alberta T4A 2J7

Projection and Datum:
10TM (Alberta); NAD83

Heights are above mean sea level.
No part of this photosimulation shall be altered in any way.

Structure design and placement are subject to final engineering.
Structure placement is based on average ruling span for the structure type.

Photosimulation Created Using
TrueView™ Technology
(Patent No.: US 8,184,906 B2)

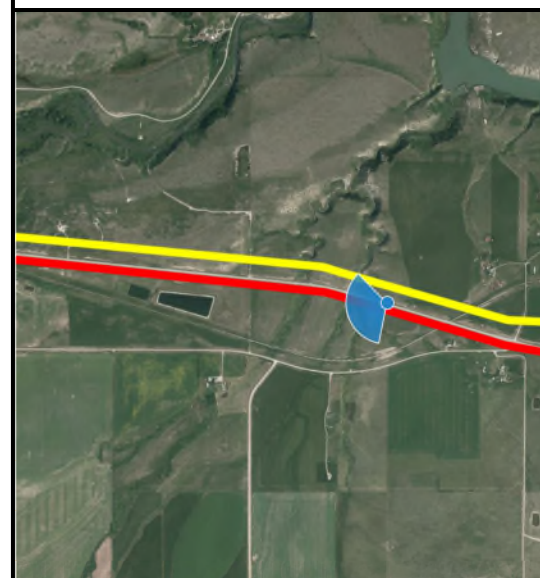
Provided by

Truescape®



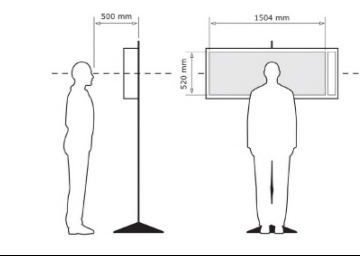
Viewpoint SH1 - Highway 3 (Crowsnest Highway - East of Lundbreck), Looking West-Southwest - Structure 2

For on-screen display:
Scale bar to be 4 inches (101.6 mm) wide
Viewing distance 19.7 inches (50 cm)



Easting Position 10TM:	63191.4
Northing Position 10TM:	5490651.4
Elevation of Viewpoint Position NAD83:	1184.8
Height of Camera Above Ground (m):	1186.4
Date of Photography:	21 July 2015 at 08:04 AM
Orientation of View:	WSW
Horizontal Field of View:	124°
Vertical Field of View:	55°

CORRECT VIEWING OF TRUEVIEW™ PHOTOSIMULATIONS



NOTES:
 Viewpoint locations have been precision surveyed by:
Boundary Technical Group Inc.
 421 East Lake Road
 Airdrie, Alberta T4A 2J7
 Projection and Datum:
 10TM (Alberta); NAD83
 Heights are above mean sea level.
 No part of this photosimulation shall be altered in any way.
 Structure design and placement are subject to final engineering.
 Structure placement is based on average ruling span for the structure type.

Photosimulation Created Using
 TrueView™ Technology
 (Patent No.: US 8,184,906 B2)

Provided by

Truescape®



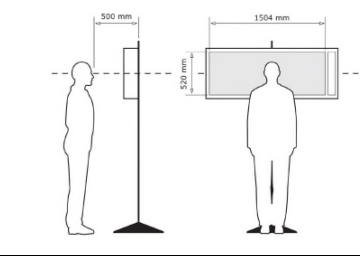
Viewpoint SH1 - Highway 3 (Crowsnest Highway - East of Lundbreck), Looking West-Southwest - Structure 2 - Double configuration

For on-screen display:
 Scale bar to be 4 inches (101.6 mm) wide
 Viewing distance 19.7 inches (50 cm)



Easting Position 10TM:	63191.4
Northing Position 10TM:	5490651.4
Elevation of Viewpoint Position NADE3:	1184.8
Height of Camera Above Ground (m):	1186.4
Date of Photography:	21 July 2015 at 08:04 AM
Orientation of View:	WSW
Horizontal Field of View:	124°
Vertical Field of View:	55°

CORRECT VIEWING OF TRUEVIEW™ PHOTOSIMULATIONS



NOTES:
Viewpoint locations have been precision surveyed by:
Boundary Technical Group Inc.
421 East Lake Road
Airdrie, Alberta T4A 2J7

Projection and Datum:
10TM (Alberta); NAD83

Heights are above mean sea level.
No part of this photosimulation shall be altered in any way.

Structure design and placement are subject to final engineering.
Structure placement is based on average rufing span for the structure type.

Photosimulation Created Using
TrueView™ Technology
(Patent No.: US 8,184,906 B2)

Provided by

Truescape®

www.truescape.com



Viewpoint SH1 - Highway 3 (Crowsnest Highway - East of Lundbreck), Looking West-Southwest - Structure 3

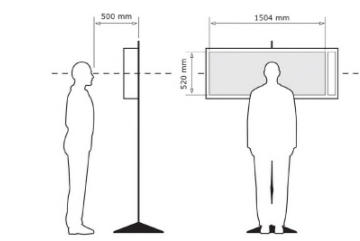
For on-screen display:
Scale bar to be 4 inches (101.6 mm) wide
Viewing distance 19.7 inches (50 cm)

- Viewpoint Location
- Representative Transmission Line Route in Road Allowance
- Representative Transmission Line Route outside of Road Allowance



Easting Position 10TM:	63191.4
Northing Position 10TM:	5490651.4
Elevation of Viewpoint Position NADE3:	1184.8
Height of Camera Above Ground (m):	1186.4
Date of Photography:	21 July 2015 at 08:04 AM
Orientation of View:	WSW
Horizontal Field of View:	124°
Vertical Field of View:	55°

CORRECT VIEWING OF TRUEVIEW™ PHOTOSIMULATIONS



NOTES:
Viewpoint locations have been precision surveyed by:
Boundary Technical Group Inc.
421 East Lake Road
Airdrie, Alberta T4A 2J7

Projection and Datum:
10TM (Alberta); NAD83

Heights are above mean sea level.
No part of this photosimulation shall be altered in any way.

Structure design and placement are subject to final engineering.
Structure placement is based on average ruling span for the structure type.

Photosimulation Created Using
TrueView™ Technology
(Patent No.: US 8,184,906 B2)

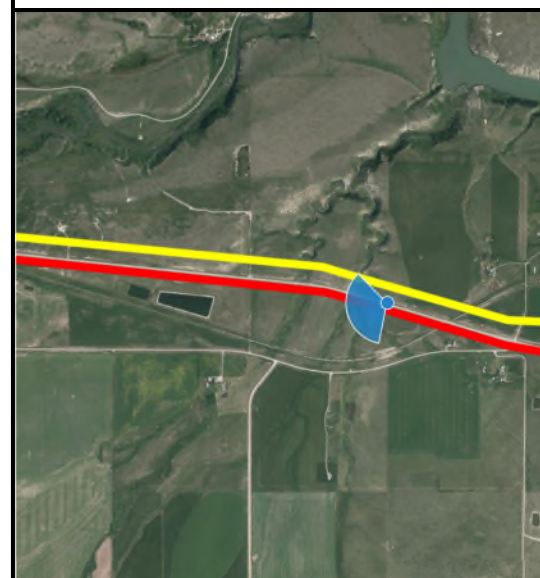
Provided by



Viewpoint SH1 - Highway 3 (Crowsnest Highway - East of Lundbreck), Looking West-Southwest - Structure 3 - Double configuration

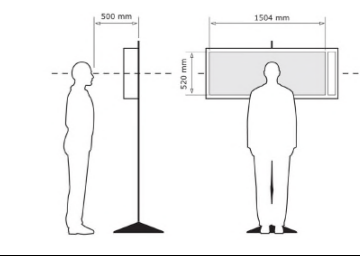
For on-screen display:
Scale bar to be 4 inches (101.6 mm) wide
Viewing distance 19.7 inches (50 cm)

- Viewpoint Location
- Representative Transmission Line Route in Road Allowance
- Representative Transmission Line Route outside of Road Allowance



Easting Position 10TM:	63191.4
Northing Position 10TM:	5490651.4
Elevation of Viewpoint Position NAD83:	1184.8
Height of Camera Above Ground (m):	1186.4
Date of Photography:	21 July 2015 at 08:04 AM
Orientation of View:	WSW
Horizontal Field of View:	124°
Vertical Field of View:	55°

CORRECT VIEWING OF TRUEVIEW™ PHOTOSIMULATIONS



NOTES:
Viewpoint locations have been precision surveyed by:
Boundary Technical Group Inc.
421 East Lake Road
Airdrie, Alberta T4A 2J7

Projection and Datum:
10TM (Alberta); NAD83

Heights are above mean sea level.
No part of this photosimulation shall be altered in any way.

Structure design and placement are subject to final engineering.
Structure placement is based on average ruling span for the structure type.

Photosimulation Created Using
TrueView™ Technology
(Patent No.: US 8,184,906 B2)

Provided by

Truescape®



Viewpoint SH1 - Highway 3 (Crowsnest Highway - East of Lundbreck), Looking West-Southwest - Structure 4

For on-screen display:
Scale bar to be 4 inches (101.6 mm) wide
Viewing distance 19.7 inches (50 cm)



Viewpoint SH1 - Highway 3 (Crowsnest Highway - East of Lundbreck), Looking West-Southwest - Structure 5

For on-screen display:
 Scale bar to be 4 inches (101.6 mm) wide
 Viewing distance 19.7 inches (50 cm)



**Chapel Rock to Pincher Creek Area
 Transmission Project
 Structure Options**

Viewpoint SH1
 Highway 3 (Crowsnest Highway - East
 of Lundbreck)

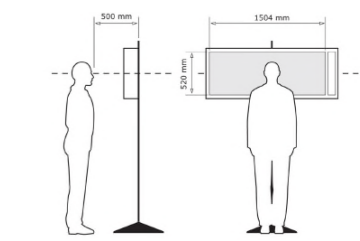
Looking West-Southwest

- Viewpoint Location
- Representative Transmission Line Route in Road Allowance
- Representative Transmission Line Route outside of Road Allowance



Easting Position 10TM:	63191.4
Northing Position 10TM:	5490651.4
Elevation of Viewpoint Position NAD83:	1184.8
Height of Camera Above Ground (m):	1186.4
Date of Photography:	21 July 2015 at 08:04 AM
Orientation of View:	WSW
Horizontal Field of View:	124°
Vertical Field of View:	55°

CORRECT VIEWING OF TRUEVIEW™ PHOTOSIMULATIONS



NOTES:
 Viewpoint locations have been precision surveyed by:
Boundary Technical Group Inc.
 421 East Lake Road
 Airdrie, Alberta T4A 2J7
 Projection and Datum:
 10TM (Alberta); NAD83
 Heights are above mean sea level.
 No part of this photosimulation shall be altered in any way.
 Structure design and placement are subject to final engineering.
 Structure placement is based on average ruling span for the structure type.

Photosimulation Created Using
 TrueView™ Technology
 (Patent No.: US 8,184,906 B2)

Provided by



www.truescape.com



Viewpoint SH1 - Highway 3 (Crowsnest Highway - East of Lundbreck), Looking West-Southwest - Structure 6

For on-screen display:
 Scale bar to be 4 inches (101.6 mm) wide
 Viewing distance 19.7 inches (50 cm)



**Chapel Rock to Pincher Creek Area
 Transmission Project
 Structure Options**

Viewpoint SH1
 Highway 3 (Crowsnest Highway - East
 of Lundbreck)

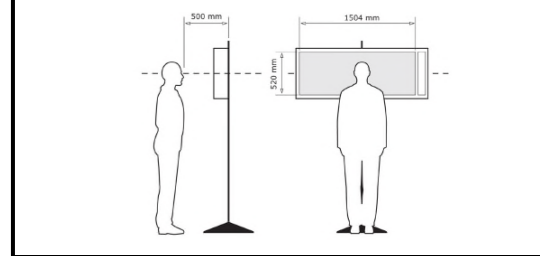
Looking West-Southwest

- Viewpoint Location
- Representative Transmission Line Route in Road Allowance
- Representative Transmission Line Route outside of Road Allowance



Easting Position 10TM:	63191.4
Northing Position 10TM:	5490651.4
Elevation of Viewpoint Position NAD83:	1184.8
Height of Camera Above Ground (m):	1186.4
Date of Photography:	21 July 2015 at 08:04 AM
Orientation of View:	WSW
Horizontal Field of View:	124°
Vertical Field of View:	55°

CORRECT VIEWING OF TRUEVIEW™ PHOTOSIMULATIONS



NOTES:
 Viewpoint locations have been precision surveyed by:
Boundary Technical Group Inc.
 421 East Lake Road
 Airdrie, Alberta T4A 2J7

Projection and Datum:
 10TM (Alberta); NAD83

Heights are above mean sea level.
 No part of this photosimulation shall be altered in any way.

Structure design and placement are subject to final engineering.
 Structure placement is based on average ruling span for the structure type.

Photosimulation Created Using
 TrueView™ Technology
 (Patent No.: US 8,184,906 B2)

Provided by



www.truescape.com



Viewpoint SH1 - Highway 3 (Crowsnest Highway - East of Lundbreck), Looking West-Southwest - Structure 7

For on-screen display:
 Scale bar to be 4 inches (101.6 mm) wide
 Viewing distance 19.7 inches (50 cm)



**Chapel Rock to Pincher Creek Area
 Transmission Project
 Structure Options**

Viewpoint SH1
 Highway 3 (Crowsnest Highway - East
 of Lundbreck)

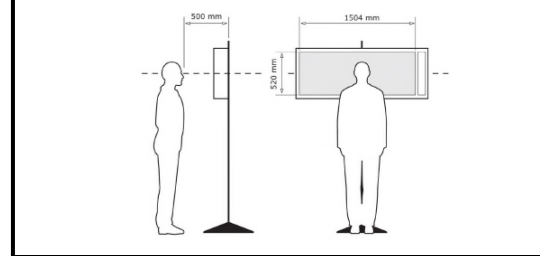
Looking West-Southwest

- Viewpoint Location
- Representative Transmission Line Route in Road Allowance
- Representative Transmission Line Route outside of Road Allowance



Easting Position 10TM:	63191.4
Northing Position 10TM:	5490651.4
Elevation of Viewpoint Position NAD83:	1184.8
Height of Camera Above Ground (m):	1186.4
Date of Photography:	21 July 2015 at 08:04 AM
Orientation of View:	WSW
Horizontal Field of View:	124°
Vertical Field of View:	55°

CORRECT VIEWING OF TRUEVIEW™ PHOTOSIMULATIONS



NOTES:
 Viewpoint locations have been precision surveyed by:
Boundary Technical Group Inc.
 421 East Lake Road
 Airdrie, Alberta T4A 2J7
 Projection and Datum:
 10TM (Alberta); NAD83
 Heights are above mean sea level.
 No part of this photosimulation shall be altered in any way.
 Structure design and placement are subject to final engineering.
 Structure placement is based on average ruling span for the structure type.

Photosimulation Created Using
 TrueView™ Technology
 (Patent No.: US 8,184,906 B2)

Provided by



www.truescape.com